



Heckmann Building Products Inc.

1501 N. 31st Avenue

Melrose Park, IL 60160-2911

800-621-4140 or 708-865-2403 Fax: 708-865-2640

www.heckmannbuildingprods.com

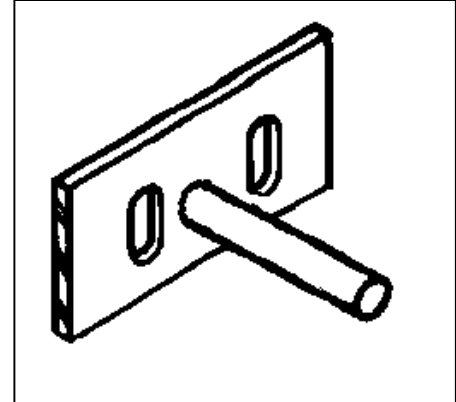
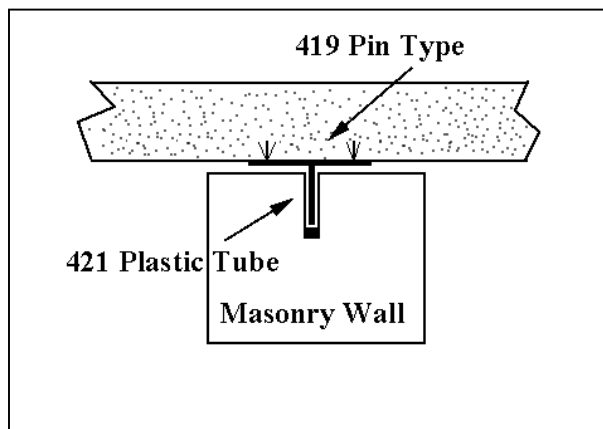
SUBMITTAL SHEET:

No. 419 PIN TYPE MASONRY WALL STABILIZING ANCHOR

Used to resist lateral loads at the top of a masonry wall. The 419 Pin Type is supplied with two slots for attachment to a concrete slab with expansion anchors, or without slots for welding to a structural beam. Typically manufactured from 12 gage steel 2" x 5" with a 3/8" diameter x 6" long welded pin. Specify Hotdip Galvanized after Fabrication or Stainless Steel.

Use with #421 Plastic Tube.

Custom Sizes are available.



Stainless Steel:

Sheet metal anchors and ties: ASTM A 167 AISI Type 304.

Plate and bent bar anchors: ASTM A 666 AISI Type 304.

Wire ties and anchors: ASTM A 580 AISI Type 304.

Hotdip Galvanized:

ASTM A 153 Class B-2: (1.50 oz/ ft²).(0.46kg/m²)

Mill Galvanized:

Sheet metal anchors and ties: ASTM A 653 G60

Wire: ASTM A 641 (0.1 oz/ ft².)

Plain Steel:

Sheet Metal anchors and ties: ASTM A 569, ASTM A 366.

Plates, bars, and shapes: ASTM A 123, ASTM A 36.

Wire: ASTM A 82, ASTM A 82-95a.

Approvals:

Comments: