

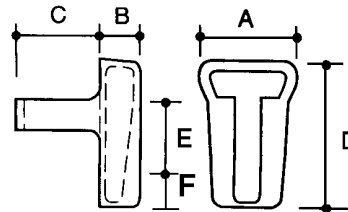
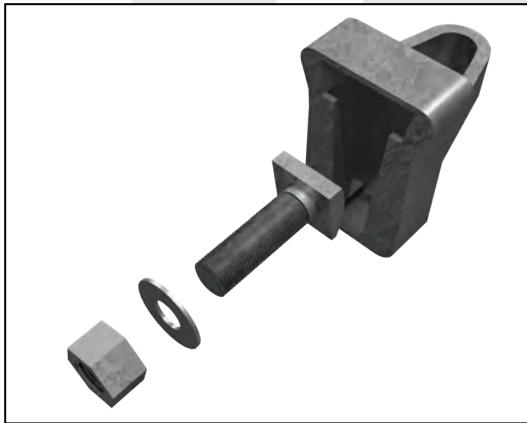
# Submittal Sheet

## #425 Shelf Angle Wedge Inserts

## #427 Askew Head Bolts

Inserts are embedded in concrete slabs to hold Shelf Angles or other devices using #427 Askew Head Bolts. The insert is nailed to the wood form through 3 holes. When the form is stripped, the nails are clipped from the outside allowing the #427 bolt to vertically adjust to the proper location. The #425 Shelf Angle must be installed at least 1-1/2" from any edge on the concrete slab.

**Shims: See #442 Plastic Horse-Shoe Shim washers and #443 Steel Horse-Shoe Shim Washers.**



Dimensions (in inches)

Size	Cat no	A	B	C	D	E	F
3/4	425-6H	2-5/16	1-3/16	2-1/2	3-7/8	1-3/4	1
3/4 Long	425-6LH	2-1/4	1-1/4	2-3/8	5-1/2	3	1



### Standards:

425 insert - Hot-dip Galvanized After Fabrication

- 425-6H: 3/4" Regular
- 425-6LH 3/4" Long

427 bolt with nut and washer

3/4" diameter - Hot-dip Galvanized After Fabrication

Bolt Lengths: 2" 2-1/2" 3" 4" 6"

Quantity: \_\_\_\_\_

### Material Specifications

Malleable Iron Specifications: ASTM A47-B4  
Ferritic Malleable Iron Castings Class/Grade 32510

Min Tensile Strength psi 50,000

Min. Yield Strength - psi 32,500 Elongation in tension 10%

Microstructure is Temper carbon and ferrite

For additional information on Specifications of Shelf Angle Inserts

refer to the following:

ASME B18.2.1-2010 - Askew Head Bolts - American National Standards Institute.

Load Values (ultimate loads):

Shear: **425-6H** 16,750 lbs **425-6HL** 17,305 lbs

Tension: **425-6H** 13,200 lbs **425-6HL** 17,367 lbs

Concrete Strength: 4,125 psi

Torque 150 ft/lbs

Heckmann advises a safety factor of 3 be applied to the above loads.

**▲ WARNING:** Cancer and Reproductive Harm [www.P65Warnings.ca.gov](http://www.P65Warnings.ca.gov)