

Submittal Sheet
#75-KB Pos-I-Tie® KeyBolt Stone Veneer Anchoring System

- The Pos-I-Tie® KeyBolt system is designed for easy and effective stone anchor attachment where sheathing/insulation is installed over the backup wall. It is essential that the lateral loads be transferred between the stone and backup without compromising the sheathing.
- This is a solid stainless steel anchoring system for stone veneers.
- There are 2 pieces: A KeyBolt with double nuts and an EPDM washer along with a custom made stone anchor.
- For use with Steel Stud, CMU, Concrete, ICF, Structural Steel and Wood backups.



Individual Submittal Sheets are available for the following KeyBolt Stone Anchors



#275-UKB



#275-ZKB



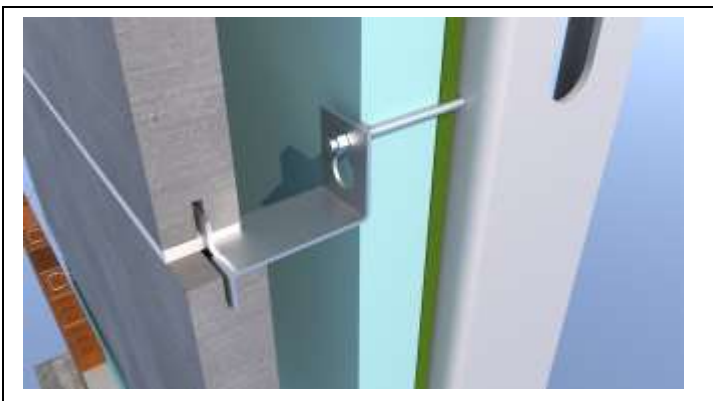
#274-KB



#276-KB



#278-KB



Material Specifications

Stainless Steel: Sheet metal anchors and ties: ASTM A 167, ASTM A 666, ASTM A 240/A240M AISI Type 304.

Wire ties and anchors: ASTM A 580 AISI Type 304
(AISI Type 316 available upon request)

Submittal Sheet
#75-KB Pos-I-Tie® KeyBolt Stone
Veneer Anchoring System

NOTE: The KeyBolt System requires a minimum 1-1/2" airspace.

Sheathing Thickness	Barrel Screw Lengths	Steel Studs	CMU/Concrete/Wood
5/8" -- 1-1/4"	2"	75KBSA	75KBSACON
1-1/4" -- 2"	2-5/8"	75KBSB	75KBSBCON
2" -- 2-1/2"	3-1/8"	75KBSC	75KBSCCON
2-1/2" -- 3"	3-5/8"	75KBSD	75KBSDCON
3" -- 3-1/2"	4-1/8"	75KBSE	75KBSECON
3-1/2" -- 4"	4-5/8"	75KBSF	75KBSFCON
4" -- 4-1/2"	5-1/8"	75KBSG	
4-1/2" -- 5"	5-5/8"	75KBSH	75KBSHCON

Quantity: _____

