



# AIR & VAPOR BARRIER

## CCW-705 RS

### Description

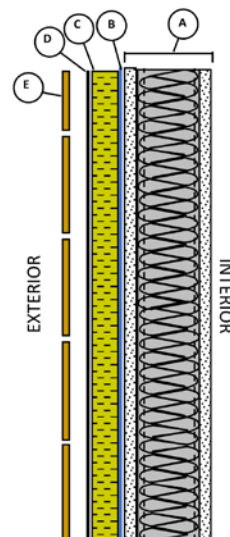
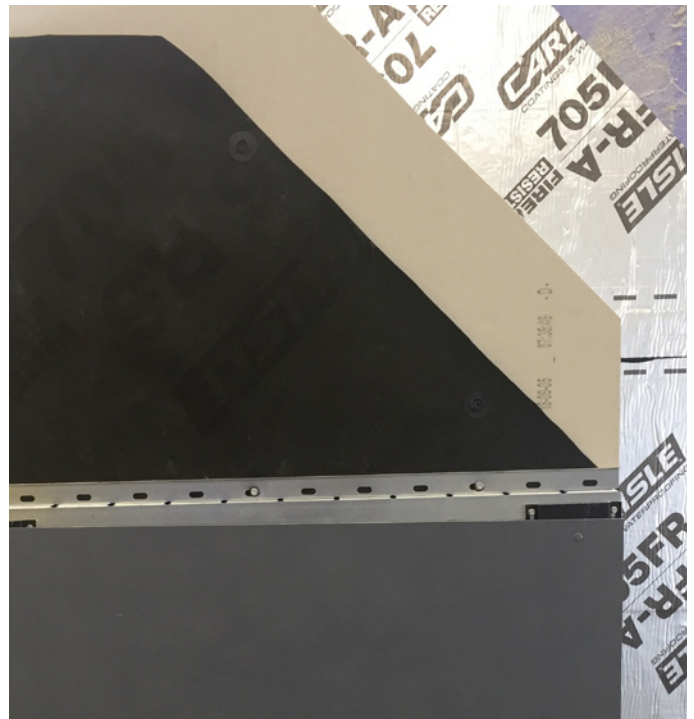
CCW-705 RS is a robust, UV-resistant engineered fabric designed for use as a blackout membrane behind open-joint rain screen claddings. When installed over exterior wall insulation, CCW-705 RS also protects the insulation from rain water and wind washing. 705 RS is mechanically attached and neighboring pieces are shingle-lapped. For optional enhanced performance, CCW-705 RS laps and terminations can be sealed with Barribond HP sealant or BRT-801 black-faced detail tape provided by CCW. The black CCW-705 RS fabric bears a black imprint of the brand name and lap lines, facilitating product identification and installation. The imprint on the CCW-705 RS fabric is not apparent once the rain screen cladding is installed.

### Features and Benefits

- Imprint maintains black backdrop look, while facilitating product identification and proper installation.
- Contributes to functionality and durability of rain screen wall assemblies.
- No weather restrictions for installation.
- Highly vapor-permeable: allows underlying materials to dry through.
- Fire-tested: can be used in many NFPA 285 wall assemblies.

### Installation

Before application, obtain full, safe access to the area. Substrates shall be sound and suitable for overlay with CCW-705 RS. Install CCW-705 RS with printed side facing the exterior. Secure CCW-705 RS with cladding attachment system or attach with suitable fasteners. Shingle lap neighboring pieces of CCW-705 RS 6 inches minimum at overlaps and end laps. For enhanced air and water tightness, caulk or tape over laps, terminations and openings with Barribond HP sealant or 4" width BRT-801 tape. Prepare surfaces of CCW-705 RS accepting BRT 801 tape with CAV-GRIP or Travel Tack contact adhesive. Press BRT-801 firmly in place with a J roller. Overlap neighboring pieces of BRT-801 tape 2" minimum. BRT-801 tape can be applied at ambient temperature ranging from 35°F to 110°F. CCW-705 RS may be left exposed up to 12 months (365 days). If the membrane is damaged or becomes loose during exposure, remove and replace damaged material and secure loose material. CCW-705 RS use in a typical wall assembly is shown [in figure].



### WALL ASSEMBLY SECTION

- A. STUD WALL OR MASS WALL
- B. FULLY-ADHERED SHEET OR LIQUID AIR & WATER RESISTIVE BARRIER
- C. EXTERIOR INSULATION (OPTIONAL)
- D. CCW-705 RS, MECHANICALLY ATTACHED AND SHINGLE-LAPPED
- E. RAIN SCREEN CLADDING, MAX 2" WIDTH JOINT, MAX 40% EXPOSED AREA

# AIR & VAPOR BARRIER

## CCW-705 RS

### Limitations

- Not for permanent exposure – cover with code-compliant exterior cladding.
- Not for use as a wearing surface or traffic resistance.
- For use on walls only
- Delivery, Storage & Handling
- Store CCW-705 RS product and accessories in an area protected from direct sunlight and precipitation.

### Packaging

Product	Description	Size
CCW-705 RS	Engineered fabric wind and rain barrier	59" x 164' roll

### Flashing Tape and Contact Adhesives

Product	Description	Size
Barribond HP	STPE detail sealant and liquid flashing (navy blue color)	20 fl-oz sausages, 20 per box
BRT-801	Pressure-sensitive tape, 30-mil thickness. Black UV-resistant poly facer coated with gray elastomeric butyl adhesive	50-foot rolls, 2", 3", 4", 6", 9" and 12" widths
CAV-GRIP	Aerosol spray contact adhesive packaged in pressurized cylinders. Reusable spray gun and 6', 12' or 18' hoses are sold separately and are attached to cylinder for dispense	40# cylinder with 30-lb. fill weight of adhesive
Travel Tack	Aerosol spray contact adhesive packaged in portable spray cans	15 oz. can, 12 per case

### Typical Properties

Property	Test Method	Results
Color		Black with black imprint
Thickness		28 mils
Tensile Strength	ASTM D 882	44 lbf/in (machine direction) 29 lbf/in (cross direction)
Tear Resistance	ASTM D 4073	50 lbf (machine direction) 45 lbf (cross direction)
UV Resistance	2,000h in Weatherometer (5,040 kJ/m <sup>2</sup> *nm)	No cracking visible at 20X magnification
Water Vapor Permeance	ASTM E 96	55.2 Perms (method A desiccant) 79.0 Perms (method B water)
Water Resistance	EN 1928	Class W1, before and after aging
Air Permeance	ASTM E 2178	<0.004 CFM/ft <sup>2</sup> @1.57 PSF (<0.02 L/s*m <sup>2</sup> @ 75 Pa)
Heat Release by Cone Calorimeter	ASTM E 1354, 50 kW/m <sup>2</sup> heat flux	HRRPeak: 238 kW/m <sup>2</sup> EHC: 27 MJ/kg THR: 8.8 MJ/m <sup>2</sup>
Surface Burning	ASTM E 84	Flame Spread 0, Smoke Generated 55
Vertical and Lateral Fire Propagation	NFPA 285	Pass in many assemblies. Priest & Associates EEV 10123 for Carlisle Coatings & Waterproofing
Service Temp		CCW-705 RS: -40°F to 250°F BRT-801: -20°F to 180°F
Max. Outdoor Exposure		1 year
Open Joint Cladding Conditions		Permanent exposure allowed through max 2-inch width open joint, max 40% of area

### Limited Warranty

Carlisle Coatings & Waterproofing Incorporated (Carlisle) warrants this product to be free of defects in workmanship and materials only at the time of shipment from our factory. If any Carlisle materials prove to contain manufacturing defects that substantially affect their performance, Carlisle will, at its option, replace the materials or refund its purchase price. This limited warranty is the only warranty extended by Carlisle with respect to its materials. There are no other warranties, including the implied warranties of merchantability and fitness for a purpose. Carlisle specifically disclaims liability for any incidental, consequential, or other damages, including but not limited to, loss of profits or damages to a structure or its contents, arising under any theory of law whatsoever. The dollar value of Carlisle's liability and buyer's remedy under this limited warranty shall not exceed the purchase price of the Carlisle material in question.