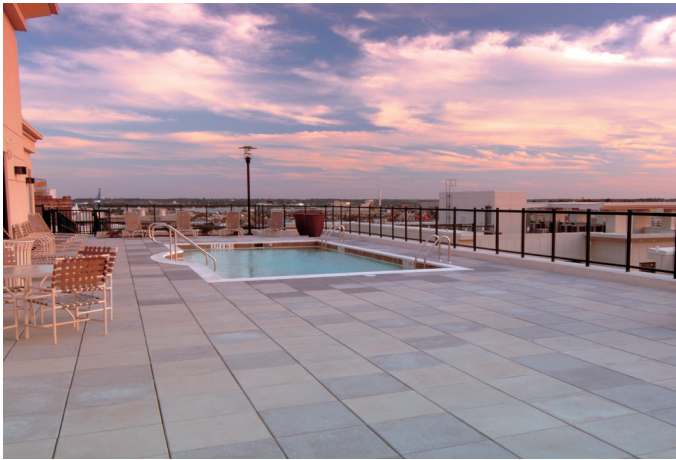




ROOF GARDEN Plaza Paver System



Overview

Carlisle has partnered with Hanover® Architectural Products, the premier manufacturer of concrete pavers, to offer the Carlisle Plaza Paver System. This partnership allows building owners, architects, specifiers and contractors to obtain all of the necessary products to create a Plaza Paver system from a single source. In addition to offering the pavers and related accessories, Carlisle also offers material, overburden removal and wind speed warranties.

Resilient in even the harshest conditions, Plaza Pavers offer an aesthetically pleasing feature, protect the underlying membrane, and provide useable space that can be tailored to meet any need.

Features and Benefits

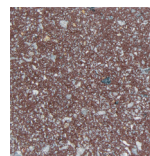
- Plaza Pavers are manufactured to provide the highest level of performance, with a minimum 8,500 psi compressive strength
- Plaza Pavers are available in various sizes and weights; the most common size is 23½" x 23½" x 2", weighing 25 lbs. per square foot
- Plaza Pavers are available in 8 standard colors, with thousands of special-order colors available
- Plaza Pavers can contribute to LEED® credit requirements
- Plaza Pavers feature a flexural strength of 1,100 lbs. per square inch

Pavers

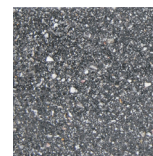
Plaza Pavers are manufactured to provide the highest level of performance, featuring a minimum compressive strength of 8,500 psi and an absorption rate of less than 5%. Plaza Pavers are available in various finishes – Tudor finish, designed for aesthetic installations, is the “standard” – and several styles that meet the aesthetic and functional needs of any building.

Plaza Pavers are available in 8 standard colors – Quarry Red, Charcoal, Natural, Red, Tan, Brown, Cream and Limestone Gray. Aggregate blending is an option, and Plaza Pavers are also available in thousands of custom colors.

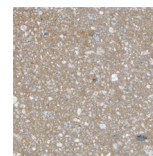
Plaza Pavers - Standard Colors



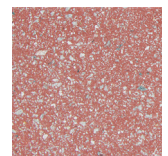
Brown



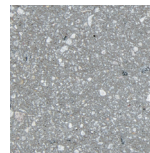
Charcoal



Cream



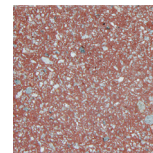
Red



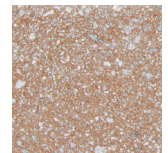
Limestone Gray



Natural



Quarry Red



Tan

Prest Paver

The standard size of Carlisle's Prest Paver is 23½" x 23½" x 2", weighing 25 lbs per square foot; however, custom sizes are available. Prest Pavers are the most commonly used pavers and are available in thousands of colors, including the highly reflective Glacier White.

Custom sizes and colors are available; however, minimum order quantities may apply. Contact Carlisle with questions about custom paver sizes and colors.

SCIENCE. SERVICE. SOLUTIONS.

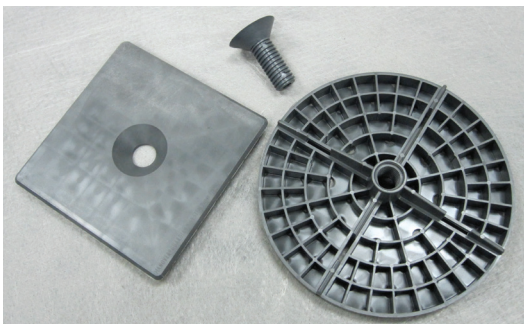
ROOF GARDEN

Plaza Paver System

Guardian Paver



The Guardian Paver provides increased wind performance using a unique three-piece pedestal system and shaped paver. The three-piece pedestal system incorporates a top and bottom plate with a bolt, connecting the entire paver system together for superior wind performance. Guardian Pavers are 23½" x 23½" with thicknesses of 2" or 3". The 2" paver weighs 25 lbs per square foot and the 3" paver weighs 38 lbs per square foot for additional wind resistance.



Guardian 3-piece Locking System

Pedestal Paver

Pedestal pavers are 23½" x 23½" x 2 ¼", weigh 22 lbs per square foot and feature a Tudor finish. The Pedestal Paver incorporates footing in the center and at each corner to provide ½" of clearance for exceptional stormwater drainage.



RockCurb

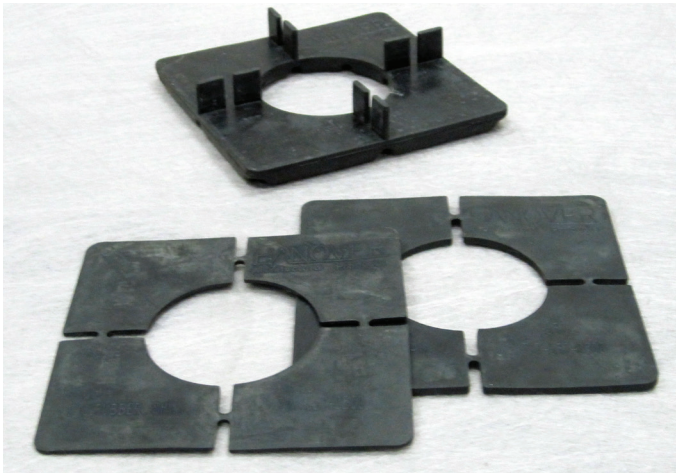
RockCurb creates an aesthetically pleasing transition between the paver system and adjoining rooftop systems. RockCurb is 6" thick and 36" long, and is available in a 12" height with a battered profile, or in an 18" height with a battered or bull nose profile. Radius sections are also available.



Pedestals

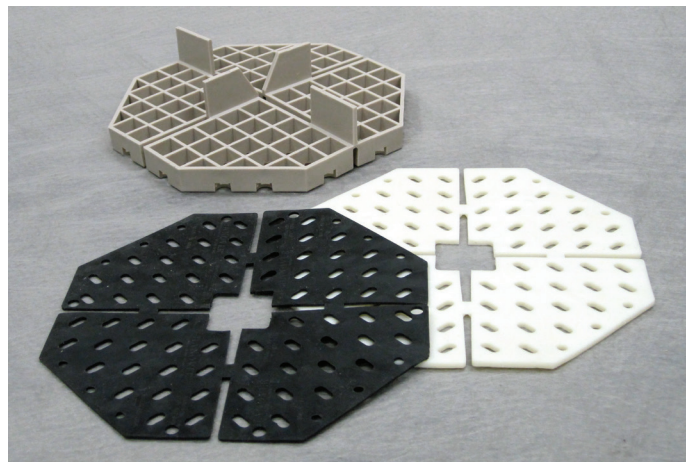
Hanover Paver Standard Colors

The EPDM Pedestal is used to provide a raised $\frac{3}{8}$ " fixed height for architectural and ballast applications. This pedestal incorporates $\frac{1}{8}$ " vertical spacer tabs and horizontal leveling shims of $\frac{1}{8}$ " or $\frac{1}{16}$ " to make installation easy.



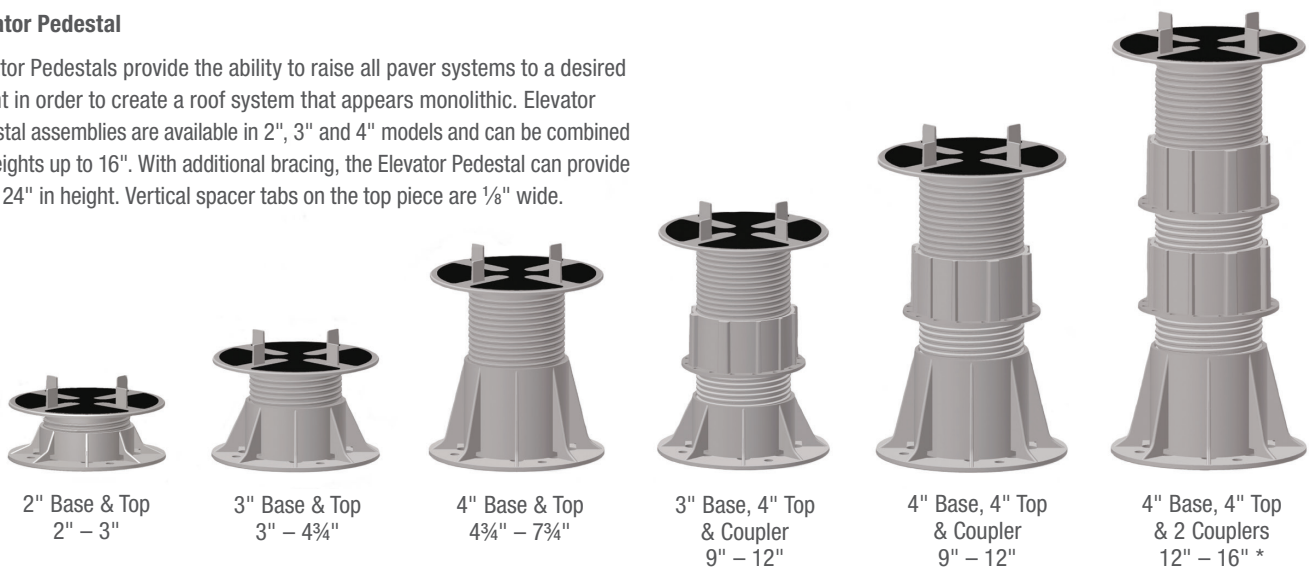
High-Tab Pedestal

The High-Tab Pedestal provides a raised $\frac{3}{8}$ " height for all paver applications. Multiple High-Tab Pedestals can be combined to provide additional height where necessary. This pedestal incorporates $\frac{1}{8}$ " vertical spacer tabs and horizontal leveling shims of $\frac{1}{8}$ " (white shim) or $\frac{1}{16}$ " (black shim).



Elevator Pedestal

Elevator Pedestals provide the ability to raise all paver systems to a desired height in order to create a roof system that appears monolithic. Elevator Pedestal assemblies are available in 2", 3" and 4" models and can be combined for heights up to 16". With additional bracing, the Elevator Pedestal can provide up to 24" in height. Vertical spacer tabs on the top piece are $\frac{1}{8}$ " wide.



Please note: It is critical that Elevator Top Units and Couplers have a minimum insertion of three threads of the unit to completely secure the pedestal and ensure stability.

Heights shown are pedestal heights only. For final paver installation height, add the thickness of the paver to the pedestal height.

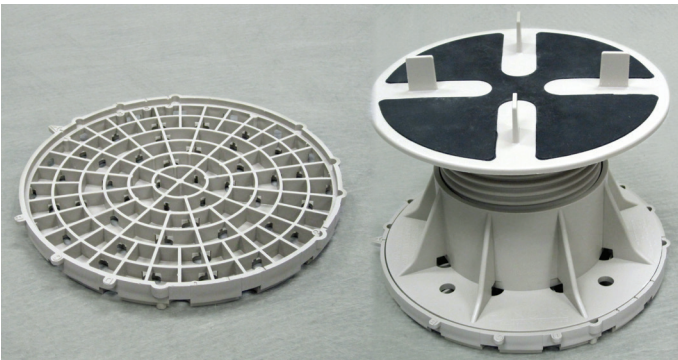
*The use of additional couplers will attain heights of up to 24". Heights of 16" to 24" require special bracing installation details.

ROOF GARDEN

Plaza Paver System

Compensator

The Compensator is a specially designed tapered circular base for use with High-Tab and Elevator Pedestals. One Compensator will provide up to 1/8" of roof slope compensation, allowing for a level paver installation. Multiple Compensators can be combined to allow for additional roof slope.



Compensator and Compensator with Elevator Pedestal

Precautions

- Pavers can be heavy. Be sure to use at least two people to move them.
- Do not to stack pavers in an area that might exceed the structural capacity of the building.
- Take care not to damage membrane or flashings during installation.

Typical Properties

Compressive	8,500 psi
Absorption	Less than 5%
Flexural	1,100 psi

Typical properties and characteristics are based on samples tested and are not guaranteed for all samples of this product. This data and information is intended as a guide and does not reflect the specification range for any particular property of this product.