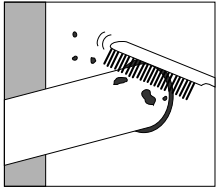
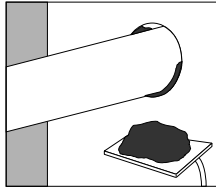


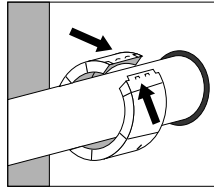
Installation instructions for CP 643



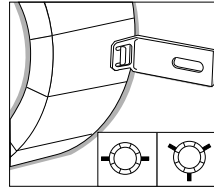
1. Clean plastic pipe



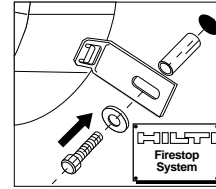
2. Close remaining gap to provide smoke and gas tight seal



3. Close collar



4. Attach fastening hooks



5. Fasten collar and installation plate (if required)

Opening

1. Clean the plastic pipes. Expansion of the intumescent material during a fire acts to close the plastic pipe. Very dirty pipes with, for example, remains of mortar, may lead to a delay in this closing action. Badly soiled plastic pipes should, therefore, be cleaned in the area where the CP 643 firestop collar is to be installed.

Application of firestop system

2. Seal the opening. Gaps must be closed with FS-ONE. The approved methods vary and are given in the specific UL system.
3. Close the CP 643 firestop collar. Place the CP 643 firestop collar around the plastic pipe and lock the closure with firm pressure until it latches.
4. Attach fastening hooks. The fastening hooks can be attached to various points on the metal housing. This allows the fastening points to be made to suit the space available in each case. The hooks must be positioned as symmetrically as possible. The required number of fastening hooks is indicated on the packaging.
5. Fastening the CP 643 firestop collar. Only when fastened properly can CP 643 protect against fire passing through.
 - Mark the fastening points.
 - Drill holes with a Hilti rotary hammer drill (i.e. TE 5) or, depending on base material, fasten using Hilti power actuated tool (e.g. DXA 40).

- To secure the CP 643 firestop collar, use Hilti anchors/fasteners.
- For maintenance reasons, a penetration seal could be permanently marked with an identification plate. In such a case mark the identification plate and fasten it in a visible position next to the seal.

Notice about approvals

- When making a pipe seal using Hilti CP 643 Intumescent Firestop Collar, please refer to the UL directory or Hilti Firestop Manual for restrictions as to opening size, type and thickness of wall or floor, maximum pipe diameter, etc.

Not to be used...

- With folded and coiled sheet-metal and cast-iron pipes (not tested)
- In highly corrosive surroundings
- With unapproved anchors/fasteners

Safety precautions

- Keep out of the reach of children.
- Read the material safety data sheet.

Storage

- Store only in the original packaging in a location protected from moisture.