

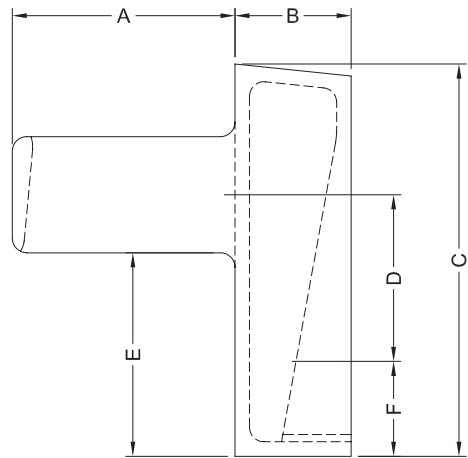
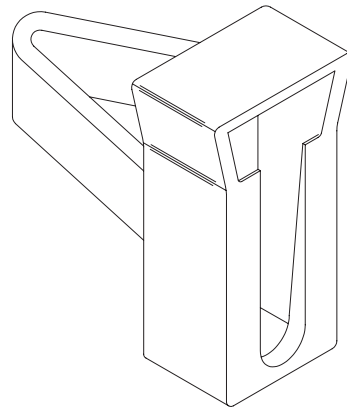
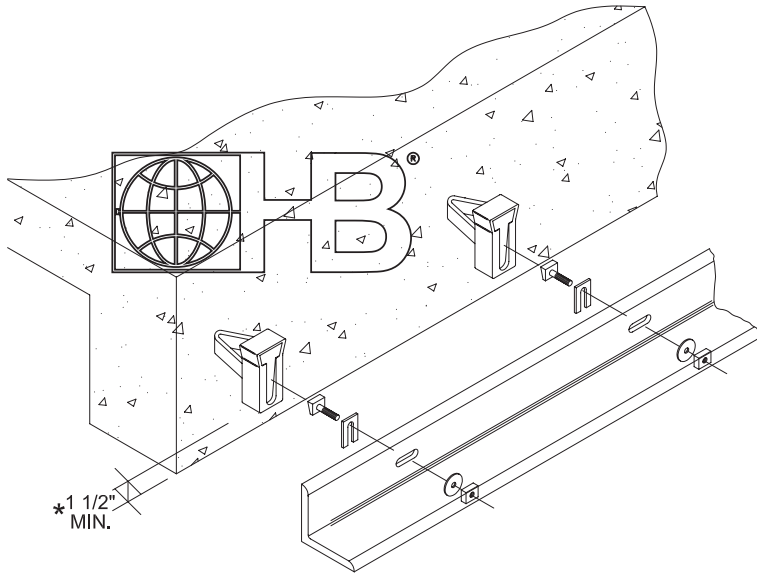


**HOHMANN & BARNARD, INC.**  
A MiTek - BERKSHIRE HATHAWAY COMPANY

# Concrete Inserts

## HW-340

### Malleable Iron Wedge Inserts



	Bolt Ø	A	B	C	D	E	F
HW-340	3/4"	2-1/2"	1-3/16"	4"	1-3/4"	2"	7/8"

DRAWINGS FOR ILLUSTRATIVE PURPOSES ONLY

**Material Conformances:**

Hohmann & Barnard Wedge Inserts are made from malleable iron and conform to **ASTM A47/A47M** Grade 32510.

Hot-Dip Galvanized: **ASTM A153/A153M-B2** (zinc coating 1.5 oz/ft<sup>2</sup>).

**Performance Data:**

Shear	Tension	Concrete Strength	Torque
16,650 lbs.	13,093 lbs.	4,125 p.s.i.	150 ft/lbs.

\*Values listed above are ultimate capacities in pounds which should be reduced by a minimum safety factor of three to determine the allowable working loads.

\*Minimum of 1 1/2" of concrete under bottom of insert.

**Finish:**

- Plain Malleable Iron       Hot-Dip Galvanized

**Accessories: Askew Head Bolt, Nut, and Washer**

The beveled head of the askew head bolt engages the internal wedge shape of a concrete insert and produces an automatic tightening action when a load is placed on it.

**HOHMANN & BARNARD, Inc.**  
30 Rasons Court | Hauppauge, NY 11788  
CORPORATE HEADQUARTERS  
T: 800.645.0616 F: 631.234.0683  
[www.h-b.com](http://www.h-b.com)

**Branch/Subsidiary Locations:**  
ALABAMA - ILLINOIS - MARYLAND  
NEW YORK - PENNSYLVANIA - TEXAS  
CANADA

© HOHMANN & BARNARD, INC. - 2012