



Armourshake is a laminated, two-piece asphalt shingle, manufactured on a robust fiberglass reinforcement. IKO's ultimate in design, thickness, heavy weight and generous exposure.

FEATURES AND BENEFITS

- ✓ BLUE-GREEN ALGAE RESISTANT
- ✓ SHAKE-LIKE ROOF APPEARANCE
- ✓ PROPRIETARY FASTLOCK SEALANT
- ✓ CLASS 4 IMPACT RESISTANCE¹

GENERAL INFORMATION

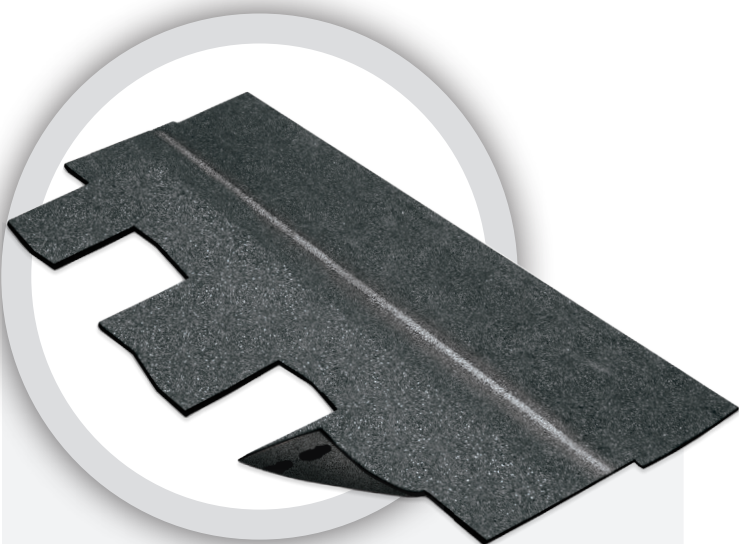
SHINGLES/BUNDLE	14
COVERAGE/BUNDLE	20.0 ft. ² (1.9 m ²)
COVERAGE/THREE BUNDLES	100 ft. ² (9.29 m ²)
BUNDLES/PALLET	36
PALLET SIZE	40 x 56 1/2 in. (102 x 142 cm)
PRODUCT STOCK NO.	1930XXX

NOTE: XXX refers to numerical product color code. Product color availability varies by region.

PRODUCT DIMENSIONS

LENGTH	37 3/8 in. (950 mm)
WIDTH	18 11/16 in. (475 mm)
EXPOSURE	5 1/2 in. (140 mm)

Product dimensions shown are subject to normal manufacturing tolerances of +/- 1/4 in. (6 mm) on the shingle's length and +/- 1/8 in. (3 mm) width.



FIBERGLASS-REINFORCED ASPHALT SHINGLES

The stunning appearance of Armourshake Designer asphalt shingles is further enhanced by laying a course of the exclusive Armour Starter strip on top of the Leading Edge Plus starter strip. The required course of IKO Armour Starter strips at the roof's lower edge further elevates their already-impressive dimensional thickness. Specialty Armourshake roofing accessories accentuate the roofline, helping to protect the most vulnerable areas and creating a roofscape that's an unforgettable standout, even in the most exclusive neighborhoods. These robust shingles carry a Class 4 Impact Resistance rating¹, which may entitle homeowners to a reduction in their home insurance premium.

Click [here](#) or scan this QR code for product literature, color swatches and color availability.





Armourshake™

APPLICABLE STANDARDS²

ASTM D3462 Product Standard

ASTM D3018 Product Standard

ASTM D3161 Class F Wind Test

ASTM D7158 Class H Wind Test

ASTM E108 Class A Fire Test³

UL 790 Class A Fire Test³

CAN/ULC S107 Class A Fire Test (Canada)³

FM 4473 Class 4 Impact Resistance Test¹

CSA A123.5 Product Standard (Canada)

Miami-Dade Product Approval⁴ [here](#)

Florida Building Code High-Velocity Hurricane Zone (HVHZ) Approval⁴ [here](#)

Texas Department of Insurance Details [here](#)

NOTE: IKO Armourshake asphalt shingles meet or exceed the requirements in the product standards referenced at the time of manufacture, including minimum total product weight, minimum tear-strength resistance, maximum granule loss and minimum asphalt mass.

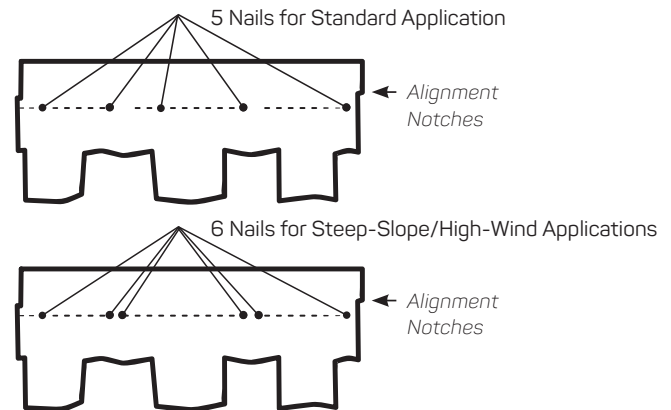
SAFETY INFORMATION

CAUTION: Working at heights on sloped-roof surfaces can be dangerous. Do not install until all appropriate safety precautions are followed. Always wear appropriate personal protective equipment (PPE), including appropriate fall protection equipment.

This product's Safety Data Sheet (SDS) is available [here](#).



SHINGLE INSTALLATION



Shingles must be installed according to all of IKO's application instructions. Some select installation requirements are highlighted here.

1. The space beneath the roof deck (e.g., attic) should be thoroughly ventilated to minimum local building code requirements.
2. Shingles should be installed with 5 1/2-inches shingle exposure to the weather. Horizontal chalk lines are recommended to aid in shingle alignment. As well, align the end of each shingle with the alignment notch in the top edge of the lower course of shingles; do not use shingle bottom edge or nail lines to gauge exposure.
3. Follow the correct offset dimensions in the shingle installation instructions.
4. The color-coordinated Armour Starter accessory starter strip, in addition to an initial starter strip course, must be used with Armourshake.
5. Open metal valleys are recommended for best roof system performance.
6. Never apply asphalt shingles to roof slopes less than 2:12. For slopes 2:12 to less than 4:12 (low slope), see special underlayment requirements outlined in the IKO application instructions.

Complete product installation details can be found [here](#).



The information on this Technical Data Sheet is based upon data considered to be true and accurate at time of issue, based on laboratory tests and production measurements, and is offered solely for the user's consideration, investigation and verification. Nothing contained herein is representative of a warranty or guarantee for which the manufacturer can be held legally responsible. The manufacturer does not assume any responsibility for any misrepresentation or assumptions the reader may formulate. To confirm the most current product technical information and compliances, please contact IKO directly at: **United States 1-888-IKO-ROOF (1-888-456-7663); Canada 1-855-IKO-ROOF (1-855-456-7663).**

¹The Impact Resistance rating is solely for the purpose of enabling residential property owners to obtain a reduction in their residential insurance premium, if available. It is not to be construed as any type of express or implied warranty or guarantee of the impact performance of this shingle by the manufacturer, supplier or installer, and damage from hail is not covered under the Limited Warranty. For further details concerning the FM 4473 standards, visit the FM Approvals website. ²Compliance with listed product standards is based on sampling and testing of products as manufactured. ³When shingles are installed over an approved underlayment. ⁴M-D and FBC HVHZ approvals apply only to shingles available in the southeast U.S. market. For more information, please contact IKO at: **1-888-IKO-ROOF (1-888-456-7663).**