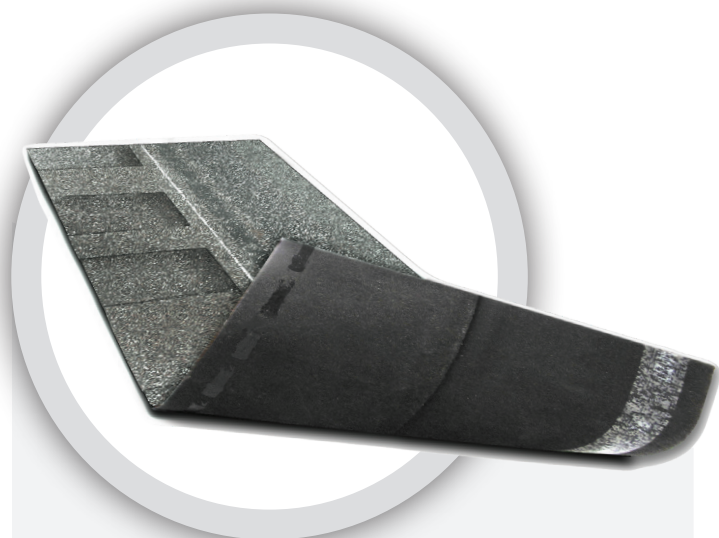




Cambridge[®] Cool Colors Plus



FIBERGLASS-REINFORCED ASPHALT SHINGLES

IKO Cambridge Cool Colors Plus offers beauty and solar reflectance. Available in select markets, they are designed to help improve a home's energy efficiency and potentially help reduce its cooling costs. IKO is pleased to provide these cool roofing shingles, which can be used to comply with California's stringent environmental standards. These popular shingles come in IKO's special "Advantage" size, which is larger than many competitors' comparable products, meaning roofers can install these shingles faster, and their larger-than-average exposure creates greater visual interest.

Click [here](#) or scan this QR code for product literature, color swatches and color availability.



Cambridge Cool Colors Plus is a laminated, two-piece asphalt shingle, manufactured on a robust fiberglass reinforcement.

FEATURES AND BENEFITS

- ✓ FULL SQUARE COVERAGE
- ✓ BLUE-GREEN ALGAE RESISTANT (DUAL GREY COLOR ONLY)
- ✓ PROPRIETARY FASTLOCK SEALANT
- ✓ FIVE STRIPS OF LAMINATE ADHESIVE
- ✓ CAN BE USED TO COMPLY WITH CALIFORNIA TITLE 24, PART 6 COOL ROOF REQUIREMENTS²

GENERAL INFORMATION

SHINGLES/BUNDLE	20
COVERAGE/BUNDLE	33.3 ft. ² (3.1 m ²)
COVERAGE/THREE BUNDLES	100 ft. ² (9.29 m ²)
BUNDLES/PALLET	56
PALLET SIZE	40 x 53 1/2 in. (102 x 136 cm)
PRODUCT STOCK NO.	4226XXX

NOTE: XXX refers to numerical product color code. Product color availability varies by region.

PRODUCT DIMENSIONS

LENGTH	40 7/8 in. (1,038 mm)
WIDTH	13 3/4 in. (349 mm)
EXPOSURE	5 7/8 in. (149 mm)

Product dimensions shown are subject to normal manufacturing tolerances of +/- 1/4 in. (6 mm) on the shingle's length and +/- 1/8 in. (3 mm) width.



Cambridge® Cool Colors Plus

APPLICABLE STANDARDS²

ASTM D3462 Product Standard

ASTM D3018 Product Standard

ASTM D3161 Class F Wind Test

ASTM D7158 Class H Wind Test

ASTM E108 Class A Fire Test³

UL 790 Class A Fire Test³

CRRC-1 SRI 20+¹

NOTE: IKO Cambridge Cool Colors Plus asphalt shingles meet or exceed the requirements in the product standards referenced at the time of manufacture, including minimum total product weight, minimum tear-strength resistance, maximum granule loss and minimum asphalt mass.

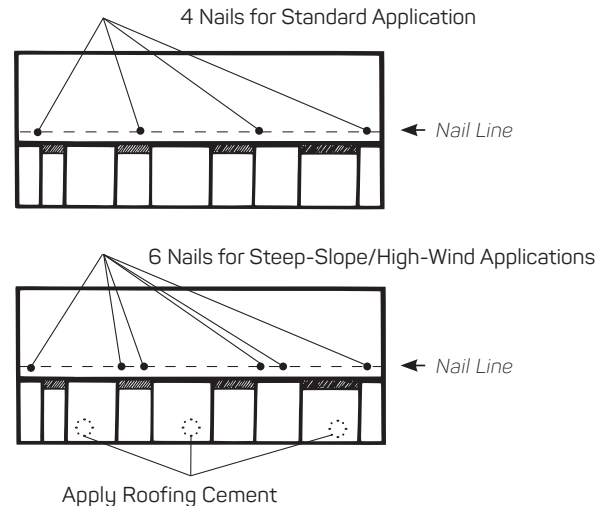
SAFETY INFORMATION

CAUTION: Working at heights on sloped-roof surfaces can be dangerous. Do not install until all appropriate safety precautions are followed. Always wear appropriate personal protective equipment (PPE), including appropriate fall protection equipment.

This product's Safety Data Sheet (SDS) is available [here](#).



SHINGLE INSTALLATION



Shingles must be installed according to all of IKO's application instructions. Some select installation requirements are highlighted here.

1. The space beneath the roof deck (e.g., attic) should be thoroughly ventilated to minimum local building code requirements.
2. Shingles should be installed with 5 7/8-inch shingle exposure to the weather.
3. Offsets between courses should be 10 inches.
4. It is critical that nails are located in the nail line so that nails penetrate both shingle layers.
5. Open metal valleys are recommended for best roof system performance.
6. Never apply asphalt shingles to roof slopes less than 2:12. For slopes 2:12 to less than 4:12 (low slope), see special underlayment requirements outlined in the IKO application instructions

Complete product installation details can be found [here](#).



The information on this Technical Data Sheet is based upon data considered to be true and accurate at time of issue, based on laboratory tests and production measurements, and is offered solely for the user's consideration, investigation and verification. Nothing contained herein is representative of a warranty or guarantee for which the manufacturer can be held legally responsible. The manufacturer does not assume any responsibility for any misrepresentation or assumptions the reader may formulate. To confirm the most current product technical information and compliances, please contact IKO directly at: **United States 1-888-IKO-ROOF** (1-888-456-7663); **Canada 1-855-IKO-ROOF** (1-855-456-7663).

¹All colors can be used to comply with California Title 24, Part 6, cool roof requirements, including the most stringent Los Angeles City and County cool roof reflectance requirements of having an SRI of 20 or greater. ²Compliance with listed product standards is based on sampling and testing of products as manufactured. ³When shingles are installed over an approved underlayment. For more information, please contact IKO at: **1-888-IKO-ROOF** (1-888-456-7663).