

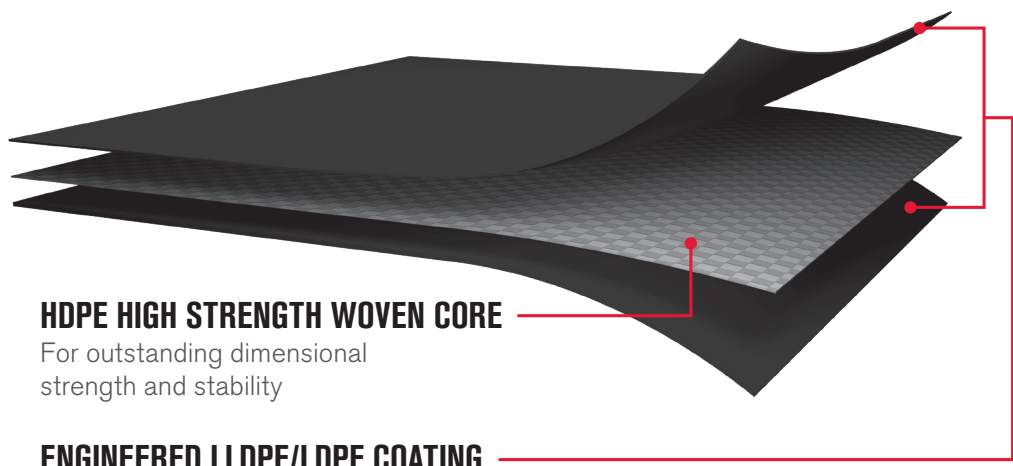


RhinoSkin<sup>®</sup> 20



## MAXIMUM STRENGTH & PERFORMANCE

RhinoSkin™ is a high-strength geomembrane designed for use as a heavy-duty cover in oil fields, landfills, remediation, trucks and rail cars, and agriculture. The HDPE woven core provides outstanding dimensional stability and high strength.



### HDPE HIGH STRENGTH WOVEN CORE

For outstanding dimensional strength and stability

### ENGINEERED LLDPE/LDPE COATING

For flexibility, chemical resistance and protection against UV, ozone and oxidation.

## FEATURES

- Exceptional UV, ozone, and oxidation resistance
- Puncture, abrasion and chemical resistant
- Non-toxic, no PVC or other hazardous materials used in construction of fabric
- Low water vapor permeability

800.567.9727  
geosynthetics@owenscorning.com

[www.owenscorning.com/geosynthetics](http://www.owenscorning.com/geosynthetics)

## APPLICATIONS

Liquid containment, irrigation water storage, covers - agriculture, soil, manure, salt and general purpose, temporary covers, landfill covers, and more.

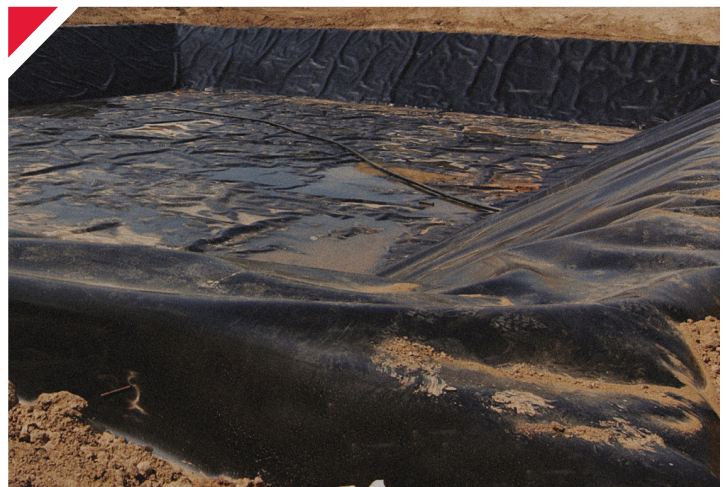
## SIZES & COLORS

- **144" wide rolls (3.66m)**
- **20 mil (0.51mm) thickness**
- **Black**

PROPERTY	TEST/METHOD	RHINOSKIN 20 TYPICAL VALUES
Nominal Weave		8/8 (16) x 9 ppi
Coating		Two sides LDPE @ 2.5 mil thickness
Core Fabric		HDPE
Weight	ASTM D5261	9.6 oz/yd <sup>2</sup> (327 gsm) ± 5%
Nominal Thickness	ASTM **D1777	20 mil (0.51 mm)
Color		Black
Available Sizes		144" (3.66m) wide
Tensile Strength	ASTM D751	MD 330 lbs (150 kg) Elongation 20% CD 286 lbs (130 kg)
Trapezoidal Tear	ASTM D4533	MD 110 lbs (50 kg)   CD 92 lbs (42 kg)
Mullen Burst	ASTM D751	600 psi (4138 kPa)
Accel. UV Weathering	ASTM G154	>90% after *2000 hrs exposure
Hydraulic Conductivity	ASTM D4491	0.0 cm/s No Flow
Hydrostatic Resistance	ASTM D751	352 psi (2462 kPa)
Puncture Resistance	ASTM D4833	171 lbs (78 kg)
Low Temperature Flexibility	ASTM D2136	-60° F (-51° C)
Penetration Resistance Motor Oil	ASTM DF903	Pass

### Geosynthetic Accreditation Institute GAI - LAP Approved Laboratory

MD = Machine Direction, CD = Cross Direction \*\*When tested with Vernier Calipers  
All values are ± 10%. \*QUV A-340 lamps 8 hrs UV @ 60° C, 4 hrs condensation @ 40°.  
The test data is based on an average taken over several production runs and should not be considered or interpreted as minimum or maximum values. Values are typical data and not limiting specifications.



800.567.9727  
geosynthetics@owenscorning.com

[www.owenscorning.com/geosynthetics](http://www.owenscorning.com/geosynthetics)