

# TEKS<sup>®</sup> SELECT

## SELF-DRILLING FASTENERS

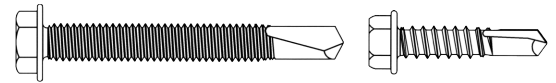
Grade 5 performance! TEKS SELECT fasteners have the strength and ductility performance similar to Grade 5 bolts.



## PRODUCT FEATURES

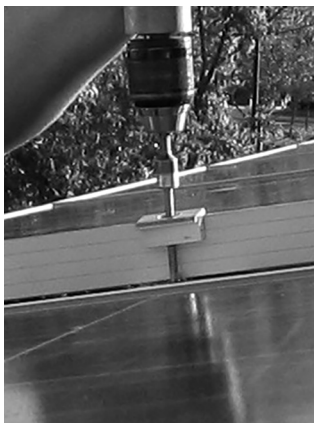
- Selectively hardened to eliminate the effects of hydrogen assisted stress corrosion (HASCC).
- Climaseal<sup>®</sup> advanced corrosion resistance coating (ACR) provides the best corrosion resistance available.
- Drill point and thread design enable the TEKS fastener to drill and tap with fewer stalls.

## SELECTOR GUIDE



PART NO.	DESCRIPTION	HEAD STYLE	DRILL POINT	FINISH	DRILL & TAP CAPACITY (IN.)	MAX. MATERIAL ATTACHMENT* (IN.)	APPLICATIONS
1076000	10-16 x 3/4"	5/16" HWH	3	Climaseal ACR	.150	.500	Glass and metal curtain walls
1080000	12-14 x 1"	5/16" HWH	3	Climaseal ACR	.187	.500	Designed to meet the challenges of attaching similar or dissimilar metals
1119000	1/4-20 x 1"	3/8" HWH	3	Climaseal ACR	.210	.450	Grade 5 nut and bolt substitution
1124000	1/4-20 x 1-1/8"	3/8" HWH	4	Climaseal ACR	.312	.500	Fenestration: Window systems, door systems and glue front systems
1125000	1/4-20 x 1-1/2"	3/8" HWH	4	Climaseal ACR	.312	.830	Anchoring metal clips to metal structures for masonry facades
1078000	1/4-20 x 2"	3/8" HWH	4	Climaseal ACR	.312	1.330	Solar system attachment

\*Maximum material attachment is indicated by arrows.



## INSTALLATION GUIDELINES

- The screws must be installed perpendicular to the work surface using a screw driving tool. The installation speed for 1/4" screws should not exceed 1,800 RPM. The installation speed for all other screws should not exceed 2,500 RPM.
- Overdriving may result in torsional failure of the fastener or stripout of the substrate.
- The screw must penetrate through the supporting metal with a minimum of three threads protruding past the back side of the supporting metal, or the length which ensures that only the load-bearing area of the screw is engaged in the material being fastened, whichever is greater.
- The fastener must penetrate beyond the metal structure a minimum of 3 threads.

## HEAD STYLE



## APPROVALS AND LISTINGS

ICC ESR-3223, COLA RR25915