

# Hammer-Set<sup>TM</sup> Anchors

## Nail-Drive Anchors



### APPLICATIONS



\*For overhead applications refer to page 79 for Redi-Drive information and performance data

NOT FOR USE IN OVERHEAD APPLICATIONS\*

- Electrical boxes
- Conduit clips
- Drywall track
- Roof flashing

### DESCRIPTION/SUGGESTED SPECIFICATIONS

## Hammer-Set Nail Drive Anchors—

SPECIFIED FOR ANCHORAGE INTO CONCRETE



Hammer-Set  
Nail-Drive  
Anchor

The Hammer-Set one-piece zinc plated steel anchor consists of an expansion body and expander drive pin. Anchors meet or exceed GSA specification A-A-1925A Type 1. (Formerly GSA: FF-S-325 Group V, Type 2, Class 3)

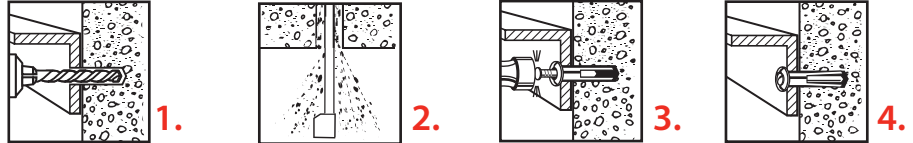
### ADVANTAGES

- Fast, easy installation
- Works in concrete, block and brick
- Install through material to be fastened
- Low profile mushroom head style

### APPROVALS/LISTINGS

Meets or exceeds GSA specification A-A-1925A Type 1 (Formerly GSA: FF-S-325 Group V, Type 2, Class 3)

### INSTALLATION STEPS



1. Drill proper size hole through material to be fastened into base material. (See Chart for bit size).
2. Clean hole.
3. Insert Hammer-Set into hole until head of anchor body is flush with material to be fastened. Tap the nail until flush with head of anchor. Ensure minimum embedment is 1/4" deeper than anchor embedment. Be sure head is firmly against fixture
4. Anchor is now set. \*\* NOT RECOMMENDED FOR OVERHEAD \*\*

### SELECTION CHART

## Hammer-Set

PART NUMBER	DESCRIPTION In. (mm)	DRILL SIZE In. (mm)	MAX. FIXTURE THICKNESS In. (mm)	MIN. EMBEDMENT In. (mm)	MIN. HOLE DEPTH In. (mm)	QTY/WT PER BOX lbs.	QTY/WT PER MASTER CTN - lbs.
HS-1607	3/16 x 7/8 (4.8 x 22.2)	3/16 (4.8)	1/4 (6.4)	5/8 (15.9)	1-1/8 (28.6)	100/ 2.0	1000/ 20
HS-1406	1/4 x 3/4 (6.4 x 19.1)	1/4 (6.4)	1/8 (3.2)	5/8 (15.9)	1 (25.4)	100/ 2.2	1000/ 22
HS-1410	1/4 x 1 (6.4 x 25.4)	1/4 (6.4)	1/4 (6.4)	3/4 (19.1)	1-1/4 (31.8)	100/ 2.4	1000/ 24
HS-1412	1/4 x 1-1/4 (6.4 x 31.8)	1/4 (6.4)	1/2 (12.7)	3/4 (19.1)	1-1/2 (38.1)	100/ 2.6	1000/ 26
HS-1414	1/4 x 1-1/2 (6.4 x 38.1)	1/4 (6.4)	3/4 (19.1)	3/4 (19.1)	1-3/4 (44.5)	100/ 2.8	1000/ 28
HS-1420	1/4 x 2 (6.4 x 50.8)	1/4 (6.4)	1-1/4 (31.8)	3/4 (19.1)	2-1/4 (57.2)	100/ 3.5	1000/ 35

### PERFORMANCE TABLE

## Hammer-Set

**Ultimate Tension and Shear Values in Concrete (Lbs/kN)**

ANCHOR DIA. In. (mm)	MIN. DEPTH OF EMBEDMENT In. (mm)	4000 PSI (27.6 MPa)	
		TENSION Lbs. (kN)	SHEAR Lbs. (kN)
3/16" (4.8)	5/8" (15.9)	500 (2.2)	450 (2.0)
1/4" (6.4)	5/8" (15.9)	700 (3.1)	700 (3.1)
1/4" (6.4)	3/4" (19.1)	800 (3.5)	800 (3.5)
1/4" (6.4)	1" (25.4)	950 (4.2)	800 (3.5)
1/4" (6.4)	1-1/4" (31.8)	1,100 (4.9)	1,100 (4.9)

Safe working loads for single installations under static loading conditions should not exceed 25% of the ultimate capacity. Divide ultimate values by 4.

**ITW Red Head**

Call our toll free number 800-848-5611 or visit our web site for the most current product and technical information at [www.itwredhead.com](http://www.itwredhead.com)