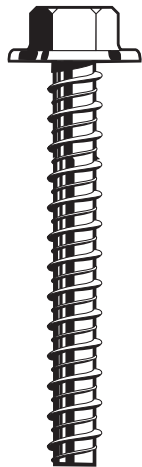


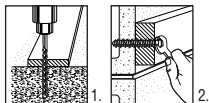
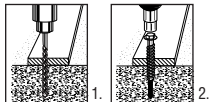


RED HEAD LDT Anchor



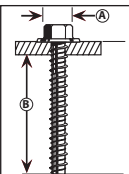
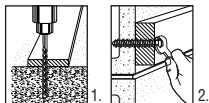
Large
Diameter
Tapcon
Anchor

Installation
Instructions



Installation Steps for Concrete, Lightweight Concrete and Metal Deck

1. Using a 5/16" carbide drill bit (for 3/8" LDT), drill a hole at least 1" deeper than anchor embedment.
2. Using an impact wrench or manual socket wrench, insert anchor into hole and tighten anchor until fully seated. If installation torque exceeds 50 ft lbs using an impact wrench, remove anchor from hole¹. Reinstall new 3/8" LDT anchor using a manual socket wrench.



Installation Steps for Hollow or Grout-Filled CMU

1. Using a 5/16" carbide drill bit (for 3/8" LDT), drill a hole at least 1" deeper than anchor embedment.
2. Using a manual socket wrench, insert anchor into hole and tighten anchor until fully seated. Do not use an impact wrench for installations in hollow or grout-filled CMU.

LDT 3/8 AND LDT 3/8 X FOR USE IN:		
Concrete	CMU	
	Hollow	Grout-filled
YES	YES	YES

LDT SIZE*	ANSI STANDARD DRILL BIT DIAMETER	ANCHOR HEAD (SOCKET SIZE) DIAMETER (A)	WASHER DIAMETER	MAX INSTALLATION TORQUE	MAX IMPACT WRENCH TORQUE RATING	MINIMUM EMBEDMENT (B)	MINIMUM HOLE DEPTH
LDT 3/8	5/16"	9/16"	13/16"	50 FT LBS	150 FT LBS	1-1/2"	2-1/2"
LDT 3/8 X	5/16"	9/16"	13/16"	50 FT LBS	150 FT LBS	1-1/2"	2-1/2"

* See catalog for effective lengths and length indication codes. LDT(X) available with corrosion resistant Envirex™ coating.

WARNING! Always wear safety glasses and other necessary protective devices or apparel when installing or working with anchors.

CAUTION: Observe torque values particularly when installing anchor in higher compressive strength concrete with an impact wrench. Over-torquing may result in lower tension and/or shear performance of the anchor.

Use of core drills is not recommended to drill holes for use with this anchor.

Not recommended for use in new concrete which has not had sufficient time to cure.

The use of carbide drill bits manufactured within ANSI B212.15 drill bit diameter requirements is recommended for installation of this anchor.

Anchor spacing and edge distance requirements (anchor installation locations) are the responsibility of the engineer of record. Call tech service for values.



© 1-800-899-7890
www.itwredhead.com
2171 Executive Drive, Suite 100
Addison, IL 60101