

Tapcon® Storm Guard



DIRECT MOUNT PERMANENT ANCHORS FOR QUICK AND EASY INSTALLATIONS OF METAL AND PLYWOOD PANELS TO CONCRETE AND BLOCK.

CORROSION RESISTANCE

Salt Spray Test (ASTM B117)

UltraShield

White UltraShield

1500 Hrs 10% or less red rust

1100 Hrs 10% or less rust

APPROVALS/LISTINGS

Miami-Dade County – #11-0616.04

For the most current approvals/listings visit:
www.itw-redhead.com

INSTALLATION STEPS

Read installation instructions before using!

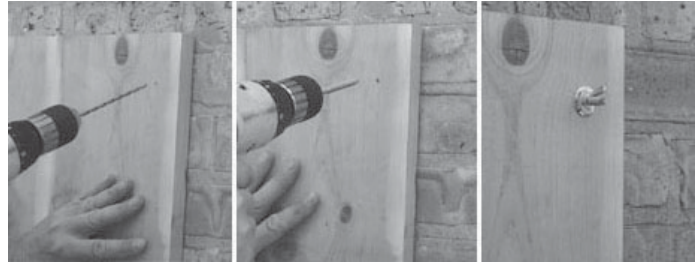


CAUTION:

DO NOT BEND DRILL BIT.

DO NOT FORCE THE DRILL BIT INTO BASE MATERIAL.

3/16" Nut Driver Installation Tool (Part # 3426910)



WARNING:

Failure to wear safety glasses with side shields can result in serious personal injury. Always wear ANSI compliant eye protection (ANSI Z87.1-2003).



WARNING:

Using the wrong size drill bit will affect performance values and may cause failure.

PERFORMANCE TABLES

Tapcon®

Storm Guard Anchors

Ultimate Tension and Shear Values (Lbs/kN) in Concrete

ANCHOR DIA. In. (mm)	MIN. DEPTH OF EMBEDMENT In. (mm)	EDGE DISTANCE	f'c = 3000 PSI (20.7 MPa)	
			TENSION Lbs. (kN)	SHEAR Lbs. (kN)
1/4 (6.4)	1 (25.4)	1-1/4 (31.8)	1,230 (5.5)	1,339 (6.0)
	1 (25.4)	2-1/2 (63.5)	1,701 (7.6)	2,333 (10.4)
	1-3/4 (44.5)	1-1/4 (31.8)	2,704 (12.0)	1,375 (6.1)
	1-3/4 (44.5)	2-1/2 (63.5)	2,844 (12.6)	2,618 (11.6)

Safe working loads for single installation under static loading should not exceed 25% of the ultimate load capacity.

Tapcon®

Storm Guard Anchors

Ultimate Tension and Shear Values (Lbs/kN) in Hollow Block

ANCHOR DIA. In. (mm)	MIN. DEPTH OF EMBEDMENT In. (mm)	EDGE DISTANCE	f'c = 1500 PSI (10.4 MPa)	
			TENSION Lbs. (kN)	SHEAR Lbs. (kN)
1/4 (6.4)	1-1/4 (31.8)	1-1/4 (31.8)	1,955 (8.7)	536 (2.4)
	1-1/4 (31.8)	2-1/2 (63.5)	1,940 (8.6)	1,088 (4.8)

Tapcon®

Storm Guard Anchors

Ultimate Tension and Shear Values (Lbs/kN) in Grout-Filled (CMU)

ANCHOR DIA. In. (mm)	MIN. DEPTH OF EMBEDMENT In. (mm)	EDGE DISTANCE	GROUT-FILLED (CMU) f'c = 2000 PSI (13.8 MPa)	
			TENSION Lbs. (kN)	SHEAR Lbs. (kN)
1/4 (6.4)	1-3/4 (44.5)	1-1/4 (31.8)	3,335 (14.8)	1,207 (5.4)
	1-3/4 (44.5)	2-1/2 (63.5)	3,779 (16.8)	2,061 (9.2)