



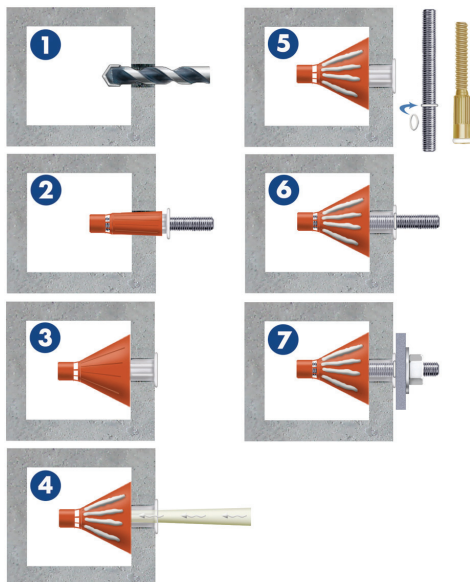
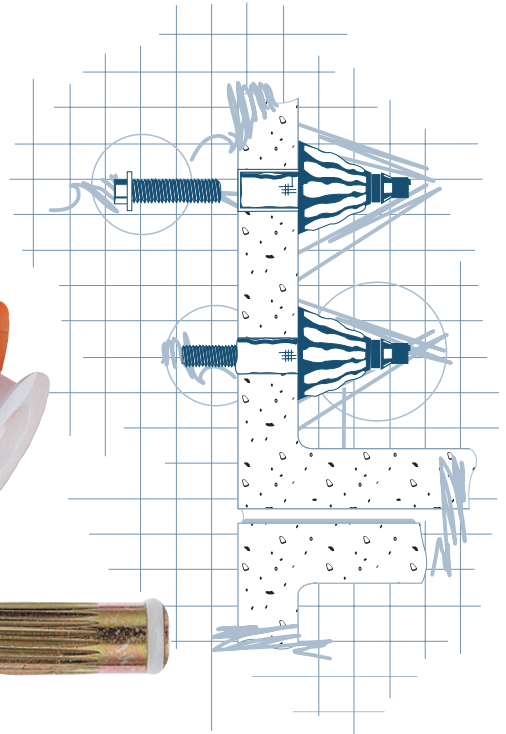
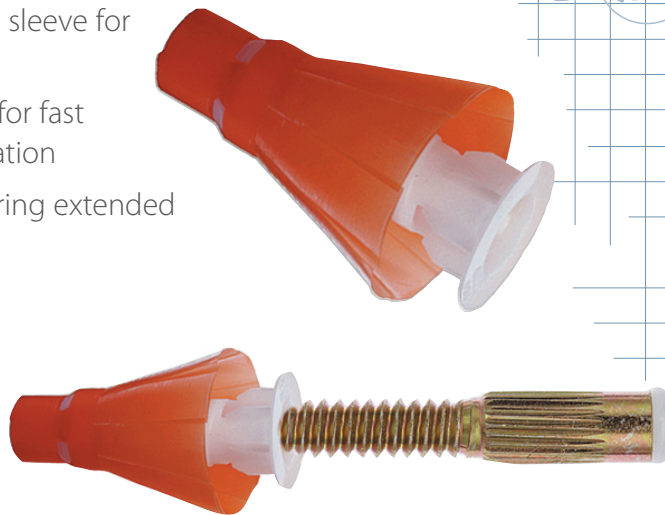
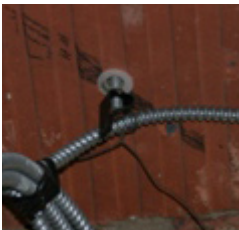
RED HEAD®
ADHESIVE ANCHORING SPECIALISTS

UMBRELLA INSERTS

COMBINE WITH A7 OR C6 TO CREATE AN ADHESIVE FASTENING SYSTEM IDEAL FOR HOLLOW BLOCK, TERRA COTTA, CLAY TILE, MASONRY AND MORE

High performance fastening system for hollow base materials

- Accepts 1/4", 3/8", and 1/2" threaded rods
- Internally threaded (3/8" bolt) sleeve for removable fastening
- Use with A7 Acrylic adhesive for fast dispensing, fast curing installation
- Use with C6 Epoxy for fast curing extended working time installation



INSTALLATION INSTRUCTIONS

1. Drill 3/4" diameter hole, 3-3/4" deep using rotation only drilling mode and carbide tipped drill bit. Clean out hole with forced air. Complete hole preparation with use of a brush and repeat cleaning with compressed air (leave no dust or slurry).
2. Place umbrella on piece of threaded rod, stretch umbrella over the rod by pulling the white collar back approximately 1". Squeeze orange portion of umbrella and push umbrella into hole.
3. Push umbrella body through the hole and completely into void. Remove threaded rod. (Do not use in solid base materials. For anchoring into block web, ends and mortar joints, use screens.)
4. Dispense and discard a sufficient amount of adhesive from new cartridge until a uniform adhesive mix is achieved. Inject approximately 1-1/2 fl. oz. of adhesive into umbrella (7 to 8 pumps using manual dispenser) to completely fill umbrella.
5. 3/8" rod uses a centering ring (supplied with inserts) to keep rod perpendicular to the wall.
6. Insert rod into the filled umbrella using a slow, soft twisting motion until it contacts the back of umbrella.
7. Wait for appropriate temperature/cure time before tightening fixture to the recommended torque of 10 ft./lbs.



© 2009 Illinois Tool Works. Red Head is a trademark of ITW Red Head
RH030-06/09



ITW Red Head®
800-899-7890
www.itwredhead.com
2171 Executive Drive, Suite 100
Addison, IL 60101