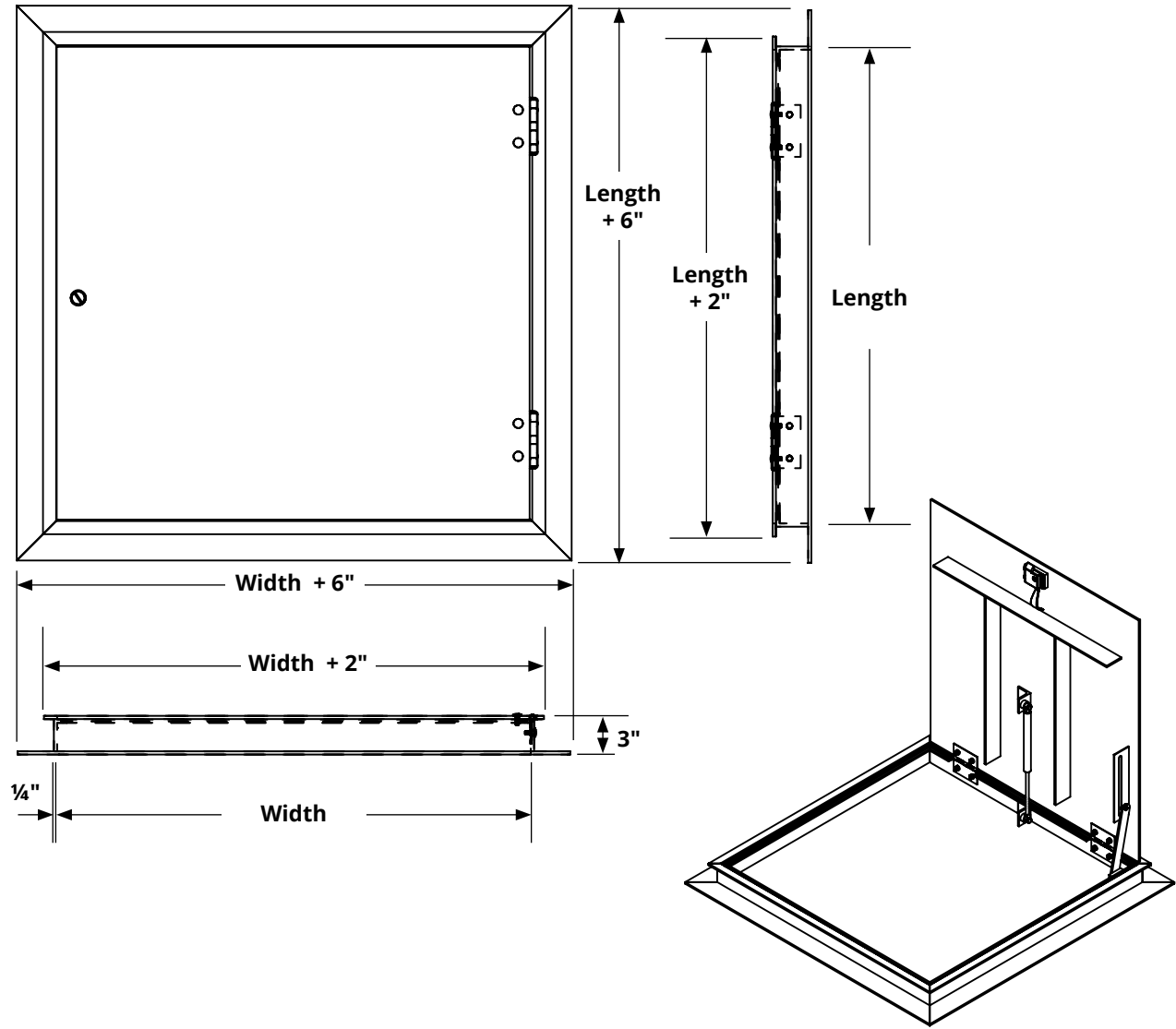


FLOOR DOOR - ANGLED FLOOR DOOR - FLDA

A flush floor door with angle frame that is designed for pedestrians in building applications where rainwater intrusion is not a concern.



SPECIFICATIONS:

- Frame Material:** 1/4" extruded aluminum
- Door Material:** Reinforced 1/4" diamond aluminum plate.
- Standard Finish:** Mill with bituminous coating on outer frame
- Latch:** 304 Stainless steel slam latch with flush key operator on exterior and handle opener on inside. Removable stainless 18-8 threaded plug and 5/16" steel square key included.
- Hinge:** 304 Stainless steel
- Spring:** 304 Stainless steel gas assist opener
- Hold Open Arm:** Stainless steel automatically locks door open to 90°
- Hardware:** 18-8 Stainless steel bolts, nuts and washers
- Load:** 300 lb/sq ft pedestrian live load
- Sizes:**
  - Minimum:** 24" x 24"
  - Maximum:** 60" x 60"
- Clear Opening:** Width minus 1-1/2" x Length minus 3-1/2"
- ORDER SIZE = FRAME INSIDE DIMENSION**

QTY	MODEL	ORDER SIZE		DOORS	APPROX. WEIGHT
		WIDTH	LENGTH		
	FLDA-2424S	24"	24"	Single	60
	FLDA-2436S	24"	36"	Single	76
	FLDA-3030S	30"	30"	Single	81
	FLDA-3048S	30"	48"	Single	115
	FLDA-3636S	36"	36"	Single	100
	FLDA-3648S	36"	48"	Single	118
	FLDA-3730S	37"	30"	Single	92
	FLDA-4242S	42"	42"	Single	120
	FLDA-4848S	48"	48"	Single	145
	FLDA-4848D	48"	48"	Double	154
	FLDA-6060D	60"	60"	Double	215
	Custom Size				

ADDITIONAL OPTIONS

<input type="checkbox"/>	S.S. Padlock Tab on Top in addition to Standard Latch - <b>PT</b>
--------------------------	---

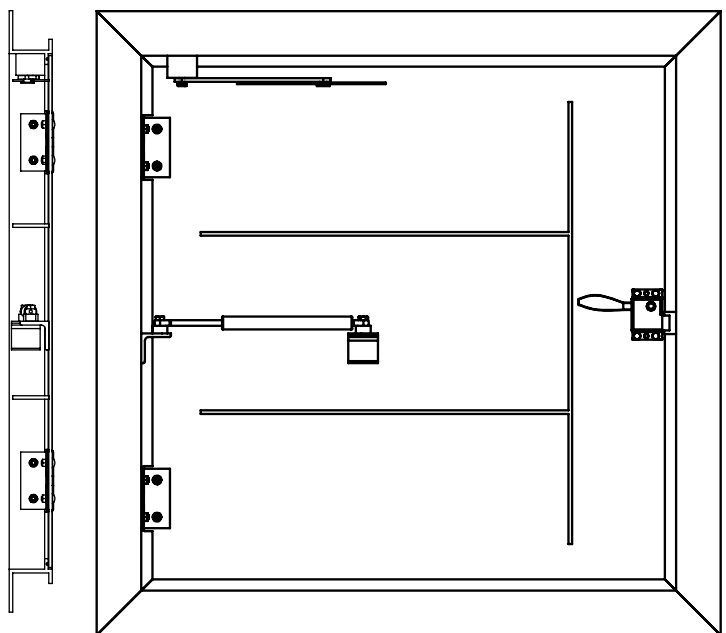


9702 Newton Ave S. Bloomington, MN 55431 | Many Locations Nationwide

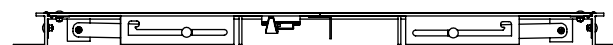
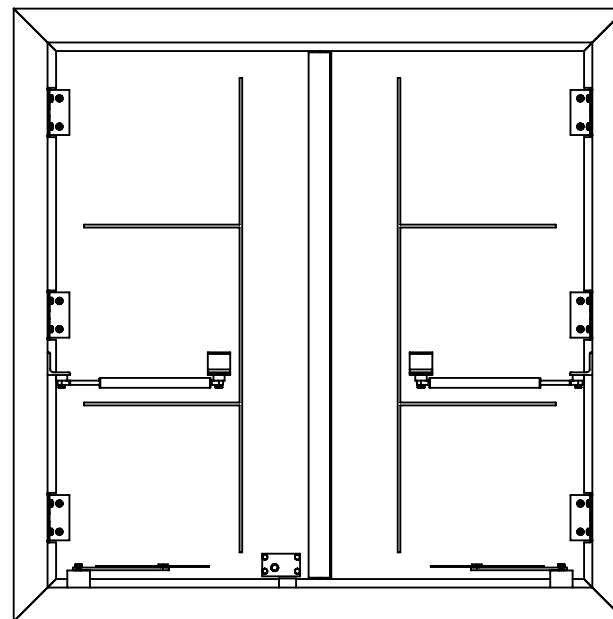
- 800-554-6077
- sales@activarcpg.com
- www.activarcpg.com

Distributor:		Project:	
Contractor:		Approved By:	
Date:		Architect:	
Scale: N/A	Pages: 1 of 2	Item #:	

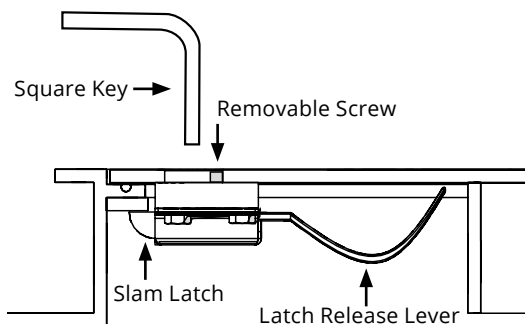
## - ANGLED FLOOR DOOR - FLDA



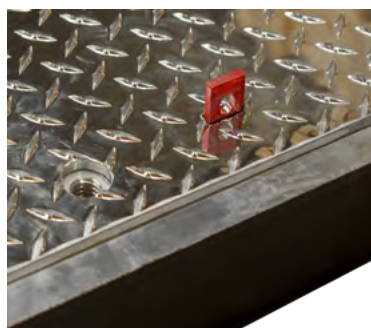
**Single Door**



**Double Door**



**Standard Latch Detail**



**Padlock Tab Detail**

