

SUBMITTAL: FX-OPTION SCHOOL FIRE EXTINGUISHER CABINETS

JL School Cabinets for fire extinguishers are constructed of heavy duty materials for rough duty applications, and offer a range of durable options.

Door & Trim Construction: 12 gauge steel with white powder-coat paint finish or 14 gauge #4 stainless steel door. Flush cabinet doors with 1-1/2" face trim on doors with glazing are mounted in a 5/8" door stop, attached by a heavy-duty continuous hinge and equipped with a zinc-plated handle and roller catch. Saf-T-Lok™ theft-deterrent feature is available on several door styles. All models meet the 4" ADA projection requirement.

Trim Style & Depth: **Recessed** - 1-1/2" wide flat trim. **Semi-Recessed** - 1-1/2" wide by 2-1/2" deep square edge.

Tub: FX models feature an inner tub of the same material and finish as the frame surrounded by fire-resistant material, and a painted steel, outer tub. Heavy-duty masonry anchors are provided on recessed & semi recessed models.

Fire-Rating: The recessed and semi-recessed Fire-FX™ cabinets are Intertek listed and labeled as an approved membrane penetration firestop system for up to 2 hours in accordance with ASTM-E814 when properly installed in a wall assembly according to installation instructions. The installation of this fire-rated cabinet which lacks a cabinet door or a condition in which the door is left ajar, will void the fire rating.



CS2015F17FX

STEP 1: SELECT MODEL NUMBER AND QUANTITY ON CHART BELOW

STEP 2: SELECT DOOR STYLE WITH HANDLE

Check one box below

- | | | |
|---|--|---|
| <input type="checkbox"/> F Full Glazing | <input type="checkbox"/> E Horizontal Duo Panel with SAF-T-LOK™ | <input type="checkbox"/> V Vertical Duo |
| <input type="checkbox"/> G Full Glazing with SAF-T-LOK | <input type="checkbox"/> S21 Solid Door | <input type="checkbox"/> W Vertical Duo with SAF-T-LOK |
| <input type="checkbox"/> D Horizontal Duo Panel | <input type="checkbox"/> L22 Solid with SAF-T-LOK™ | |

STEP 3: SELECT DOOR GLAZING Check one box below


- 10** Clear Acrylic
 19 Polycarbonate
 17 Clear Tempered Glass
 18 Laminated Safety Glass

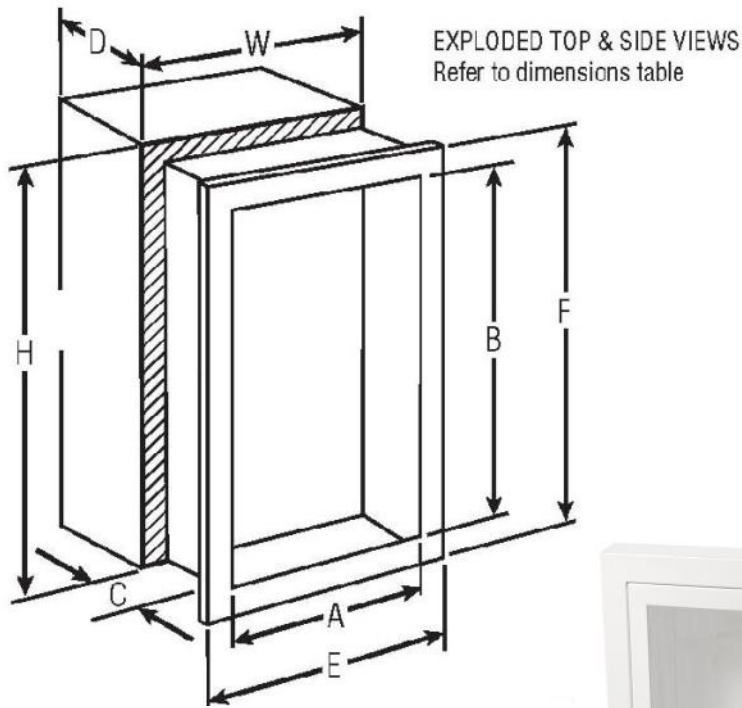
QTY	TRIM & DOOR MATERIAL & SERIES				TUB I.D. W x H x D in Inches			FRAME O.D. W x H in Inches		WALL OPENING FIRE-RATED FX OPTION			SHIP WT*	RECOMMENDED EXTINGUISHER
	STEEL	QTY	STAINLESS	TRIM STYLE	A	B	C	E	F	W	H	D	LBS	Link to Extinguishers
	CS2015__FX		CS2035__FX	Flat Trim	12	27	7-3/4	15	30	14	29	8-3/4	61	Any Cosmic, Galaxy, Mercury, Saturn & Grenadier P, Sentinel 5-10
	CS2017__FX		CS2037__FX	2-1/2" Square Edge	12	27	7-3/4	15	30	14	29	6-1/2	62	

STEP 4: OPTIONAL FEATURES AT ADDED COST (SELECT ANY)

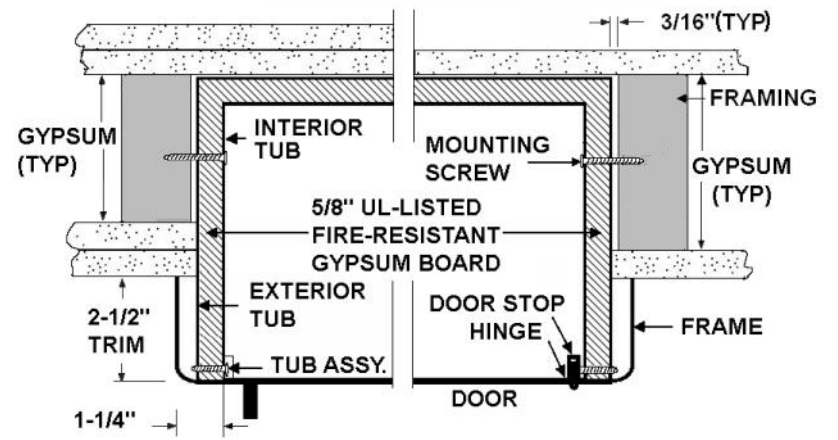
- | | | | |
|---|---|---|---|
| <input type="checkbox"/> Optional Tub Color: ___ Black ___ Red | <input type="checkbox"/> Black Vertical FE Letters LDCVBF | <input type="checkbox"/> White Horizontal FE Letters LDCHWFE | <input type="checkbox"/> Red Horizontal Decal LDHRFE |
| <input type="checkbox"/> Futura "Fire" Pull ___ Mill Alum ___ Red ___ White | <input type="checkbox"/> Red Vertical FE Letters LDCVRF | <input type="checkbox"/> Black Vertical Decal LDVBFE | <input type="checkbox"/> White Horizontal Decal LDHWFE |
| <input type="checkbox"/> Flush Pull Handle (PRH) | <input type="checkbox"/> White Vertical FE Letters LDCVWFE | <input type="checkbox"/> Red Vertical Decal LDVRF | |
| <input type="checkbox"/> Red Powder Coat Finish | <input type="checkbox"/> Black Horizontal FE Letters LDCHBFE | <input type="checkbox"/> White Vertical Decal LDVWFE | |
| <input type="checkbox"/> Black Powder Coat Finish | <input type="checkbox"/> Red Horizontal FE Letters LDCHRFE | <input type="checkbox"/> Black Horizontal Decal LDHBFE | |

View Details for Decals & Die Cuts online

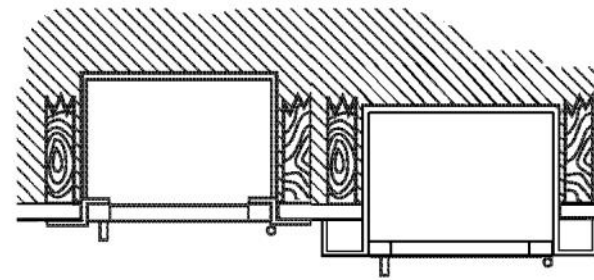
 JL INDUSTRIES	Distributor:	Quantity:
	Contractor:	Approved By:
	Model #:	Architect:
	Project:	Date:
© 2022 Activar Construction Products Group, Inc.		
HEADQUARTERS: 9702 NEWTON AV S, BLOOMINGTON, MN 55431 PH: 800-554-6077 EMAIL: SALES@ACTIVARCPG.COM WWW.ACTIVARCPG.COM MANUFACTURING: BLOOMINGTON MN & COMMERCE, CA • WARE HOUSES: SEE WEBSITE FOR LOCATIONS 12/2/2022		



CS2017F17FX



TYPICAL FIRE-RATED INSTALLATION



Flat Trim

2-1/2"
Square Trim