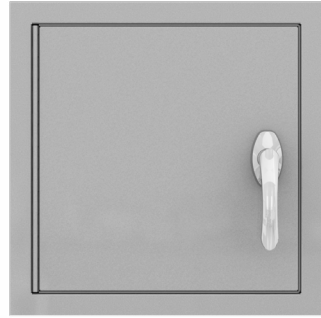


ACCESS PANEL - EXTERIOR - XPA™ AND XPS™

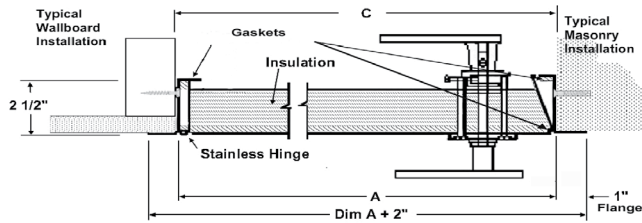
Select this gasketed and insulated access panel with a door that opens to 170° for exterior applications.



XPA with Standard H2 Handle



XPS with Standard H2 Handle



SPECIFICATIONS:

Model XPA - Galvanneal Steel and Aluminum

Frame: 16 ga. galvanneal steel.

Door: 2" Thick with fiberglass insulation, .040 aluminum door with continuous stainless hinge and R-value 5.7.

Gaskets: Adhesive backed EPDM foam and silicone rubber seals on frame and door.

Finish: White powder coat paint.

Handle: (H2) Non-locking, plastic with chrome finish.

Model XPS - Stainless Steel

Frame: 16 ga. Stainless steel.

Door: 2" Thick with fiberglass insulation, 20 ga. stainless steel door with continuous stainless hinge.

Gaskets: Adhesive backed EPDM foam and silicone rubber seals on frame and door.

Finish: 304 Stainless - No. 4 finish

Handles: (H2) Non-locking, plastic with chrome finish.

Sizes:

ORDER SIZE IS DOOR SIZE. Minimum 8" x 8". Maximum size 48" x 48".

CLEAR OPENING: Door size minus 1-1/4"

OPTIONAL FEATURES

___ (H3) Locking, plastic handle with chrome finish

___ (H4) Removable locking handle

___ Rainhood (-R)

___ Optional Color Code

QTY	Size (A) Width x Height	Wall Opening (C) Width x Height	Handles	Approx Ship Weight in lbs.	QTY	Size (A) Width x Height	Wall Opening (C) Width x Height	Handles	Approx Ship Weight in lbs.
	12" x 12"	12-3/8" x 12-3/8"	1	11		24" x 30"	24-3/8" x 30-3/8"	2	40
	14" x 14"	14-3/8" x 14-3/8"	1	15		24" x 36"	24-3/8" x 36-3/8"	2	42
	18" x 18"	18-3/8" x 18-3/8"	1	19		24" x 48"	24-3/8" x 48-3/8"	2	57
	20" x 24"	20-3/8" x 24-3/8"	1	30		30" x 30"	30-3/8" x 30-3/8"	2	44
	20" x 30"	20-3/8" x 30-3/8"	2	32		30" x 36"	30-3/8" x 36-3/8"	2	56
	22" x 30"	22-3/8" x 30-3/8"	2	34		36" x 36"	36-3/8" x 36-3/8"	2	61
	22" x 36"	22-3/8" x 36-3/8"	2	40		36" x 48"	36-3/8" x 48-3/8"	2	75
	24" x 24"	24-3/8" x 24-3/8"	1	27		48" x 48"	48-3/8" x 48-3/8"	2	108
		CUSTOM SIZE							

It is the responsibility of the customer to communicate specifications and product performance requirements that are needed for their application. This document is intended to convey potential product configurations and offerings. It is not to be used to imply or represent a specification or rating, of finished products shipped. Detailed, specific submittals can be created upon request. It is the responsibility of the customer to specify product accordingly to comply with local laws, codes, and ordinances.



JL INDUSTRIES

9702 Newton Avenue S, Bloomington, MN 55431

800-554-6077

sales@activarcpg.com

www.activarcpg.com

Distributor:		Project:	
Contractor:		Approved By:	
Date:		Architect:	
Scale: N/A	Page 1 of 1	Item#:	