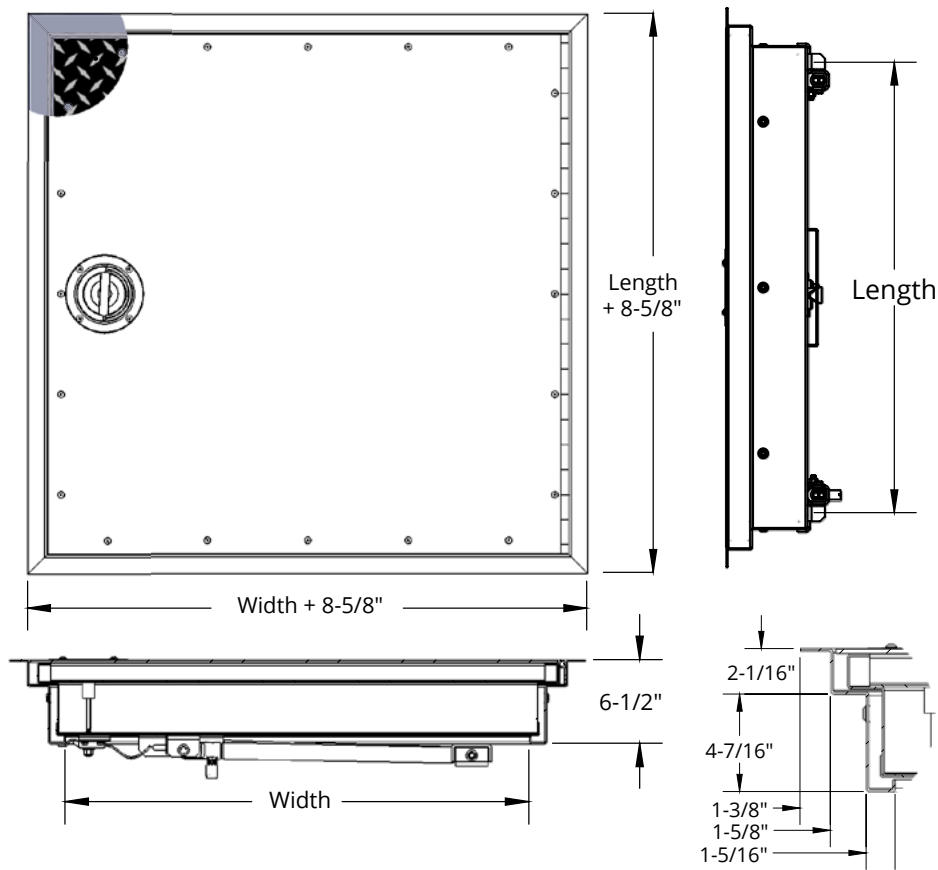


FLOOR DOOR - FHD SERIES - 1 HOUR FIRE-RATED FHD1R

Our FHD floor doors are designed to control the transmission of heat and flames when installed in a floor-ceiling assembly with a maximum temperature rise of 250 degrees Fahrenheit (121.1 degrees Celsius) for the specified rating periods of 1 hour.



SPECIFICATIONS:

Frame Material: 12 gauge (2.75 mm) galvanized steel with ash gray primer

Door Material: 1/4" (6.35 mm) Aluminum tread plate with mill finish and 14 gauge (1.99mm) galvanized steel frame and liner with ash gray primer

Insulation: High temperature ceramic fiber insulation

Hinge: Continuous stainless steel hinge

Latch: Stainless steel slam latch operated by a stainless steel recessed turn handle topside.

Spring/Cylinder: 316 stainless steel gas spring cylinders

Self Closing Mechanism: 165 degrees Fahrenheit (74 degrees Celsius) fusible link melts during fire automatically closing door without warning by releasing gas in cylinders. Not available on sizes larger than 42" (1067 mm) x 60" (1524 mm).

Installation Kit: Includes anchor straps for installing into concrete and screws for wood frame installations

Live Load: 150 lbs/sq ft (700 kg/sq metre)

Sizes:

Minimum Size: 26" x 24" (660 mm x 610 mm)

Maximum Size 1 Hour: 64" x 60" (1626 mm x 1525 mm)

Clear Opening:

Size width up to 30": Width minus 12" (305 mm) x Length

Size width over 30": Width minus 8.25" (210 mm) x Length

FIRE-RATING:

QAI Laboratories listed and labeled for 1, 2 and 3 hours for horizontal fire door assemblies.


Testing Standards: NFPA 288, CAN/ULC S101

Note: For CAN/ULC S101: Fire Rated floor door can only be installed in concrete.

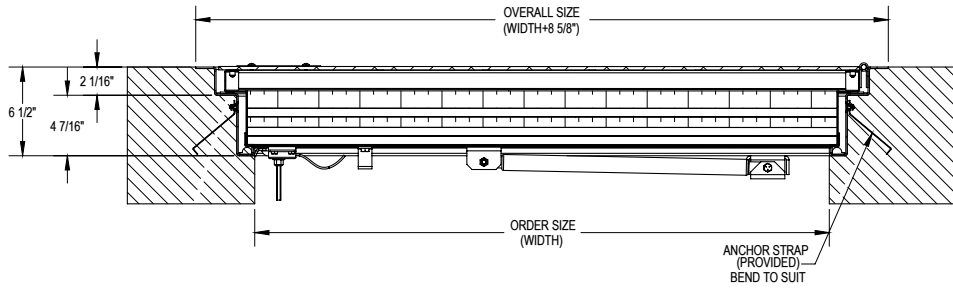
COMMON SIZES FHD1R

ORDER SIZE W x L (Inside Opening)		APPROX WEIGHT		ORDER SIZE W x L (Inside Opening)		APPROX WEIGHT*			
QTY	inches	mm	kg	lb	QTY	inches	mm	kg	lb
	26 x 24	660 x 610	58.97	130		36 x 48	914 x 1219	163.30	360
	30 x 30	762 x 762	85.28	188		36 x 54	914 x 1372	183.71	405
	30 x 48	762 x 1219	136.08	300		42 x 42	1067 x 1067	167.83	368
	36 x 24	914 x 762	81.65	180		42 x 60	1067 x 1524	233.60	525
	36 x 30	914 x 762	102.06	225		* 48 x 48	1219 x 1219	218	480
	36 x 36	914 x 914	123	270		* 64 x 60	1626 x 1524	363	800

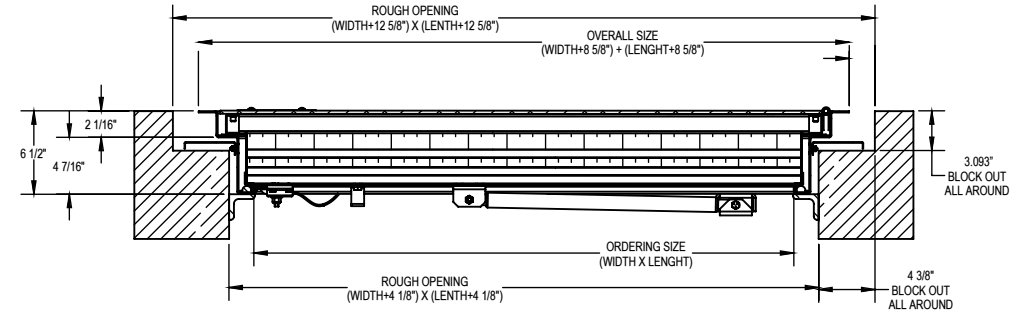
More Sizes Available Upon Request. *Self Closing Mechanism NOT available in this size.

 <p>800-554-6077 sales@activarcpg.com www.activarcpg.com</p>	Distributor:		Project:	
	Contractor:		Approved By:	
Date:		Architect:		
CANADA ONLY: 604-433-4243 info@maxammetal.com maxammetal.com		Scale: N/A	Pages: 1 of 3	Item #:

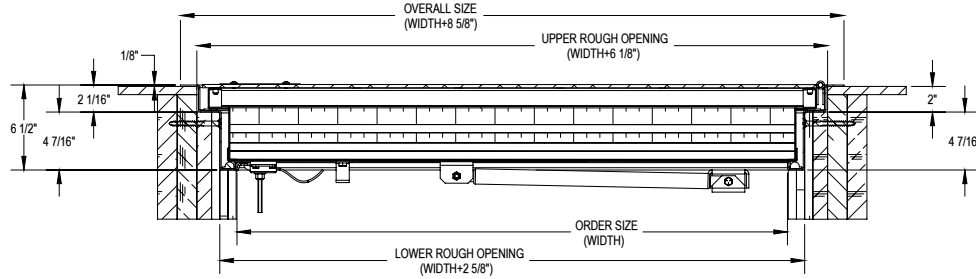
INSTALLATION: CONCRETE FHD SERIES - CAST-IN-PLACE



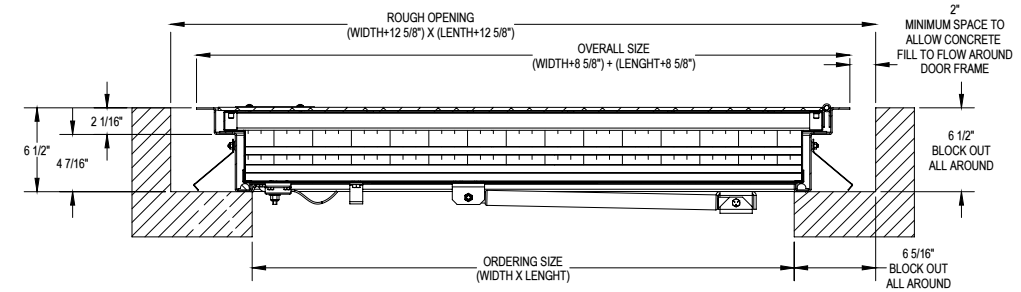
INSTALLATION: CONCRETE FHD SERIES - RETROFIT 1



**INSTALLATION: WOOD FRAMING FHD SERIES
(1 & 2 HOUR ONLY FOR NFPA-288, NOT ALLOWED FOR CAN/ULC S101)**



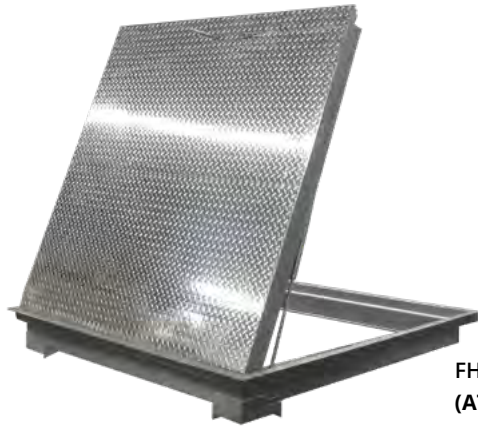
INSTALLATION: CONCRETE FHD SERIES - RETROFIT 2



See installation instructions for more detail

MADE-TO-ORDER FIRE-RATED FLOOR DOOR - FHD SERIES: INSULATED - EXAMPLE: FHD1RAT-3648U1PA

QTY	MODEL	FIRE-RATING	COVER MATERIAL	WIDTH	LENGTH	LATCH / LOCK	FRAME FINISH	OPTIONS
	FHD	1R 1-Hour	AT 1/4" Aluminum tread plate; mill finish, std AP 1/4" Aluminum smooth plate, mill finish AR 3/16" Aluminum smooth plate, mill finish, recessed for 1/8"-3/16" flooring inserts. Max size 42" x 42" GT 3/16" Steel tread plate, primer ash gray finish. Max size 36" x 36".			U1 Recessed turn handle top-side, slam latch bottom U2 Removable tool and plug top-side, slam latch bottom	PA Primer, Ash Gray	BT Bituminous coating on frame exterior exposed to concrete PH Padlock hasp on bottom SN No self-closing mechanism at 165 ° F YB Door painted yellow with black letters: "FIRE DOOR DO NOT STORE MATERIALS/ EQUIPMENT ON SURFACE" *

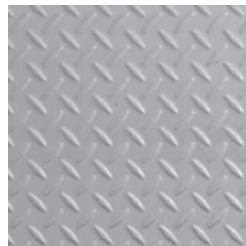


FHD with Standard 1/4"(6.35 mm) Aluminum Tread Plate (AT) and Optional Removable Tool (U2)

FLOOR DOOR OPTIONAL MATERIAL, LOCKS, LATCHES, HARDWARE, AND COLOR



AT - 1/4" (6.35 mm) Aluminum Tread Plate, Mill Finish (Standard)



GT - 3/16" (4.78 mm) Steel Tread Plate, Primer Ash Gray Finish



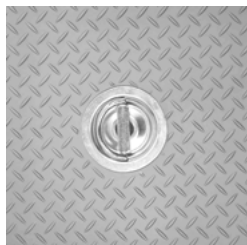
AP - 1/4" (6.35 mm) Smooth Aluminum Plate, Mill Finish



AR - 3/16" Smooth Aluminum, Mill Finish, Recessed for 1/8"-3/16" Flooring Inserts



YB - Door painted yellow with "FIRE DOOR DO NOT STORE MATERIALS/EQUIPMENT ON SURFACE" in black lettering (Not available on AR cover)



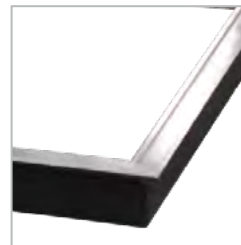
U1 - Recessed Stainless Steel Turn Handle Topside (Standard)



PH - Padlock Hasp Underside



U2 - 316 Stainless Steel Slam Latch with Topside Removable Tool and Underside Spoon Handle



BT - Bituminous Coating