

SUBMITTAL: MODEL GF GLASS FIBER REINFORCED ACCESS PANELS

The GF series of lightweight glass fiber reinforced gypsum access panels are designed to blend seamlessly into drywall ceilings and walls with the minimum of visible lines. These panels are manufactured from a 70% post-consumer recycled glass for a unique green-design matrix designed to blend seamlessly into your walls and ceilings.

The assembly consists of a surround frame and either a drop down or hinged door. These seamless access door panels are perfect for jobs where access is required at regular intervals.

Panels are lightweight and easily textured for new or retrofit applications and feature a tapered edge for a smooth tape joint. The smart design helps contractors work smarter, faster, and better with deeper tapered edges, level 5 finish, pre-countersunk locations with superior plywood embedments for addition mechanical strength resulting in drywall joints that won't shrink, crack, or sag.

Fuel Contribution (ASTM E84-80: 0, Flame spread (ASTM E84-80) 0, Combustion (ASTM E84-80) Non-combustible.

STEP 1: ENTER SELECTION ON PAGE 2, OR ENTER CUSTOM SIZE BELOW

___" W x ___" H and Select Model: ___ GFSQ ___ GF ___ GFHSC ___ GFHRC ___ GFR

STEP 2: SELECT OPTIONS AT ADDITIONAL COST

- Neoprene Gasket for Any Model
- Lockable Latch for Hinged Models
- Hinged 9GFH with Concealed Touch Latch



9GFRH - Hinged Door with Cam Latch



9GFR - Round Drop In Door



9GF - Drop In Door - Rounded Corners

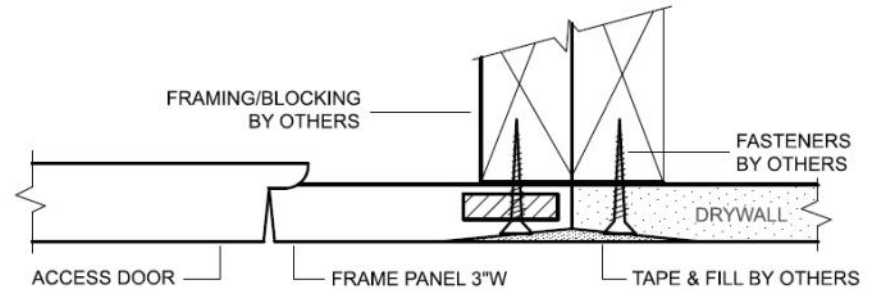


9GF - Drop In Door - Square Corners

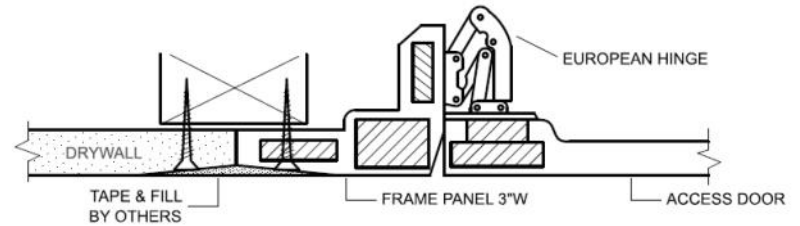
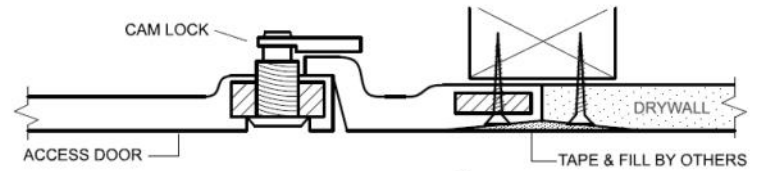
	Distributor:	Quantity:
	Contractor:	Approved By:
	Model #: Select From Chart on Pg 2 or enter custom above	Architect:
	Project:	Date: © 2021 ACTIVAR CONSTRUCTION PRODUCTS GROUP, INC.
HEADQUARTERS: 9702 NEWTON AVE S, BLOOMINGTON, MN 55431 PH: 800-554-6077 EMAIL: SALES@ACTIVARCPG.COM WWW.ACTIVARCPG.COM MANUFACTURING: BLOOMINGTON, MN & COMMERCE, CA WAREHOUSES: SEE WEBSITE FOR LOCATIONS 7/9/2021		

Qty	Part Code	Qty	Access Opening	Rough Opening
9GF - Access Panels with Drop-In Door				
Square Corners		Rounded Corners		
	9GF-0909SQ	9GF-0909	9" x 9"	15" x 15"
	9GF-1212SQ	9GF-1212	12" x 12"	18" x 18"
	9GF-1616SQ	9GF-1616	16" x 16"	22" x 22"
	9GF-1818SQ	9GF-1818	18" x 18"	24" x 24"
	9GF-2424SQ	9GF-2424	24" x 24"	30" x 30"
	9GF-3030SQ	9GF-3030	30" x 30"	36" x 36"
9GFH - Hinged Panels with Cam Latch (concealed hinge)				
Square Corners		Rounded Corners		
	9GFH-0909SC	9GFH-0909RC	9" x 9"	15" x 15"
	9GFH-1212SC	9GFH-1212RC	12" x 12"	18" x 18"
	9GFH-1616SC	9GFH-1616RC	16" x 16"	22" x 22"
	9GFH-1818SC	9GFH-1818RC	18" x 18"	24" x 24"
	9GFH-2424SC	9GFH-2424RC	24" x 24"	30" x 30"
9GFR - Round Access Panels with Drop-In Door				
	9GFR-09	9" Diameter Round Door		15 x 15
	9GFR-12	12" Diameter Round Door		18 x 18
	9GFR-16	16" Diameter Round Door		22 x 22
	9GFR-18	18" Diameter Round Door		24 x 24
	9GFR-24	24" Diameter Round Door		30 x 30

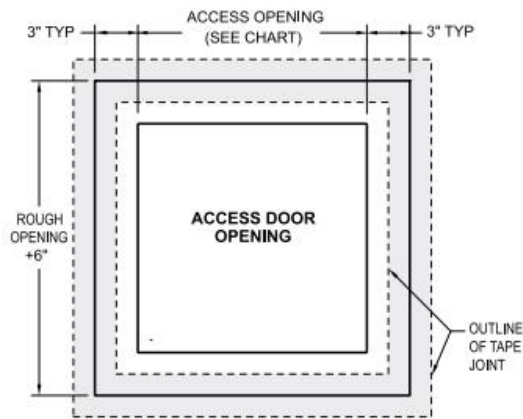
Other sizes Available Upon Request



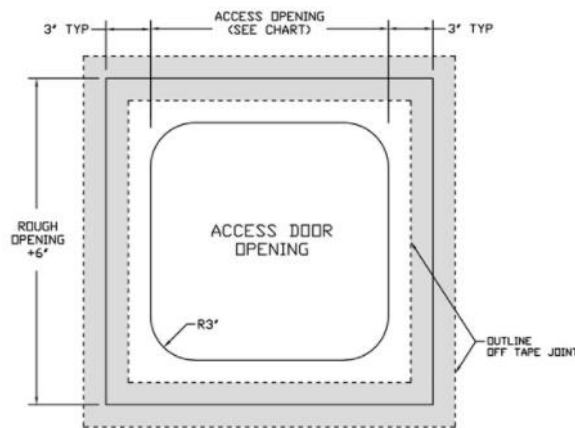
Drop-In Door Models



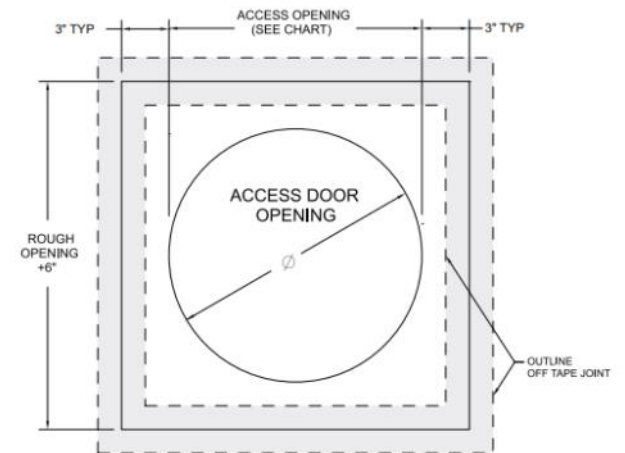
Hinged Door Models



9GFRH & 9GFSQ- Hinged or Drop In Door - Square Corners



9GF - Drop In Door - Rounded Corners



9GFR - Round Drop In Door