

JL INDUSTRIES

**ACCESS PANELS
AND FLOOR DOORS**



Division 08 31 00

**Access Doors and Frames
Floor Doors**

Division 08 31 13.53

**Security Access Doors
and Panels**

Division 08 31 16

Access Panels and Frames

ACTIVAR
INC.

www.activar.com

Construction Products Group



JL INDUSTRIES



AIR LOVERS



SAMSON PRODUCTS



THOMAS ENTERPRISES



HIAWATHA

INTERIOR ACCESS PANELS: FIRE-RATED



MODEL FDWB WITH WALLBOARD BEAD



MODEL FDPW WITH PLASTERGUARD

FIRE-RATED & INSULATED CONCEALED FRAME ACCESS PANELS: FD & FDPW Series

FDWB: Wallboard Bead (Wall or Ceiling):

Frame: 16 gauge with 1" drywall bead that can be taped for a smooth appearance.

Door: 2" thick, insulated 20 gauge steel with continuous hinge.

Finish: Gray powder coat primer.

Latch: Universal turn ring and key lock (U).

FDPW: Plaster (Wall or Ceiling):

Frame: 16 gauge with 3/4" plasterguard.

Door: 2" thick, insulated 20 gauge steel with continuous hinge.

Finish: Gray powder coat primer.

Latch: Universal turn ring and key lock (U).

Options: Custom Colors, Galvanized Finish, Mortise Slam Lock Prep (UM) or Mortise Slam Lock Installed (UMI), 3" Metal Lath for FDPW, Stainless FDWB.

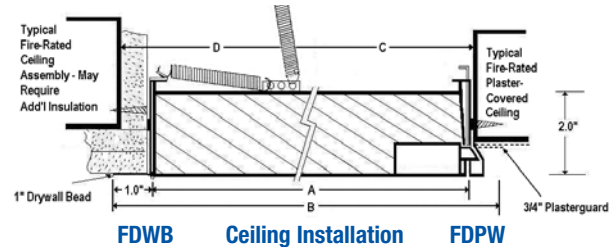
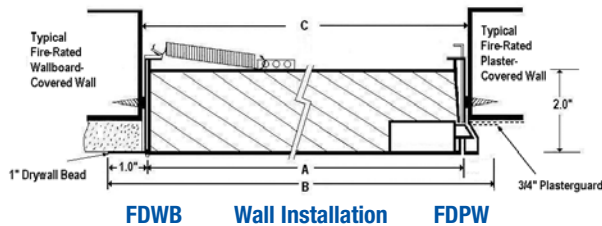
See Optional Colors on Page 12.

Fire-Rating of FDWB & FDPW:

Wall Installation: 1-1/2 hour UL "B" label in a 2 hour fire barrier.
File # R13067-1. Maximum size 48" x 48"

Ceiling Installation: Warnock Hersey listed for ceiling installations with 3 hour non-combustible rating or 1 hour combustibility rating.
File # WHI-495-PSH-0163. Maximum size 24" x 36"

CSFM: This product has been approved by the California State Fire Marshall (CSFM) pursuant to Section 13144.1 of the California Health and Safety Code. See CSFM Listing No 3330-1223:101 for allowable values and/or conditions for use concerning material presented in this document. It is subject reexamination, revision and possible cancellation.



FD SERIES ACCESS PANELS - MODELS FD, FDSS, HGFD, FDWB & FDPW										
Model Size Width x Height	Outside Frame Dimensions		C-Wall Opening Dimensions		D-Opening Dimensions		Approximate Shipping Weight			Latch(es)
			1 1/2 Hour UL "B" Rated Wall		3-Hour Non-Combustible Ceiling					
	Width	Height	Width	Height	Width	Height	FD	FDSS	HGFD	
8" x 8"	10"	10"	8 3/8"	8 3/8"	9 5/8"	9 5/8"	6 lbs.	6 lbs.	11 lbs.	1
10" x 10"	12"	12"	10 3/8"	10 3/8"	11 5/8"	11 5/8"	8 lbs.	8 lbs.	15 lbs.	1
12" x 12"	14"	14"	12 3/8"	12 3/8"	13 5/8"	13 5/8"	10 lbs.	10 lbs.	17 lbs.	1
14" x 14"	16"	16"	14 3/8"	14 3/8"	15 5/8"	15 5/8"	12 lbs.	12 lbs.	22 lbs.	1
16" x 16"	18"	18"	16 3/8"	16 3/8"	17 5/8"	17 5/8"	15 lbs.	15 lbs.	24 lbs.	1
18" x 18"	20"	20"	18 3/8"	18 3/8"	19 5/8"	19 5/8"	17 lbs.	18 lbs.	30 lbs.	1
20" x 20"	22"	22"	20 3/8"	20 3/8"	21 5/8"	21 5/8"	21 lbs.	22 lbs.	51 lbs.	1
20" x 30"	22"	32"	20 3/8"	30 3/8"	21 5/8"	31 5/8"	28 lbs.	29 lbs.	53 lbs.	1
22" x 22"	24"	24"	22 3/8"	22 3/8"	23 5/8"	23 5/8"	26 lbs.	27 lbs.	51 lbs.	1
22" x 30"	24"	32"	22 3/8"	30 3/8"	23 5/8"	31 5/8"	29 lbs.	30 lbs.	53 lbs.	1
22" x 36"	24"	38"	22 3/8"	36 3/8"	23 5/8"	37 5/8"	36 lbs.	37 lbs.	58 lbs.	2
24" x 24"	26"	26"	24 3/8"	24 3/8"	25 5/8"	25 5/8"	27 lbs.	28 lbs.	47 lbs.	1
24" x 36"	26"	38"	24 3/8"	36 3/8"	25 5/8"	37 5/8"	37 lbs.	38 lbs.	60 lbs.	2
24" x 48" *	26"	50"	24 3/8"	48 3/8"	-	-	54 lbs.	56 lbs.	85 lbs.	2
30" x 30" *	32"	32"	30 3/8"	30 3/8"	-	-	38 lbs.	40 lbs.	62 lbs.	2
32" x 32" *	34"	34"	32 3/8"	32 3/8"	-	-	43 lbs.	41 lbs.	81 lbs.	2
36" x 36" *	38"	38"	36 3/8"	36 3/8"	-	-	52 lbs.	54 lbs.	92 lbs.	2
36" x 48" *	38"	50"	36 3/8"	48 3/8"	-	-	61 lbs.	64 lbs.	114 lbs.	2

* These Sizes Walls Only

Custom Sizes and Modifications Available Upon Request



FIRE-RATED FLUSH ACCESS PANELS: FD Series

FD: Standard Panel (Wall or Ceiling):

Frame & Trim: 16 gauge steel with a 1" flange. Welded-on masonry anchor.

Door: 2" thick, insulated 20 gauge steel with continuous hinge.

Finish: Gray powder coat primer.

Latch: Universal turn ring and key lock (U).

FDSS: Stainless Steel (Wall or Ceiling):

Frame: 16 gauge stainless steel with 1" wall flange. Welded on masonry anchor.

Door: 2" thick, insulated 20 gauge stainless steel with continuous hinge.

Finish: 304 stainless steel - #4 satin finish.

Latch: Universal turn ring and key lock (U).

HGFD: Heavy Gauge and Security (Wall Only - Sizes up to 24 x 48):

Frame: 14 gauge steel with 1" wall flange. Welded-on masonry anchor.

Door: 2" thick, insulated 14 gauge steel with continuous hinge.

Finish: Gray powder coat primer.

Latch: Universal turn ring and key lock (U).

Options: Custom Colors, Galvanized Finish, Mortise Slam Lock Prep (UM) or Mortise Slam Lock Installed (UMI). **See Optional Colors on Page 12.** See also non-rated security panels on page 8.



MODEL FD

WE NOW HAVE A NEW LINE OF FIRE-RATED ACCESS DOORS IN LARGER SIZES, RECESSED WB & DOUBLE DOORS WITH RATINGS UP TO 3 HOURS
ENTER "FD" IN OUR WEBSITE SEARCH BAR TO FIND DETAILED INFORMATION ONLINE

Fire-Rating of FD, FDSS & HGFD:

Wall Installation: 1-1/2 hour UL "B" label in a 2 hour fire barrier.

File # R13067-1. Maximum size 48" x 48". HGFD max size 24" x 48"

Ceiling Installation: Warnock Hersey listed for ceiling installations with 3 hour non-combustible rating or 1 hour combustibility rating. FD, FDPW, FDWB, FDSS. File # WHI-495-PSH-0163. Maximum size 24" x 36"

CSFM: This product has been approved by the California State Fire Marshall (CSFM) pursuant to Section 13144.1 of the California Health and Safety Code. See CSFM Listing No 3330-1223:101 for allowable values and/or conditions for use concerning material presented in this document. It is subject reexamination, revision and possible cancellation.

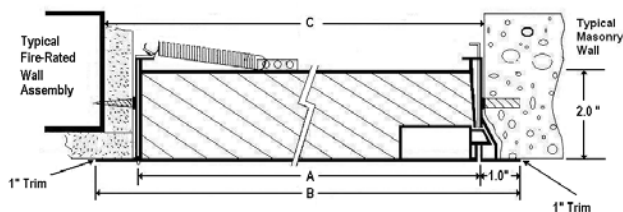


UNIVERSAL TURN RING AND KEY LOCK INCLUDED

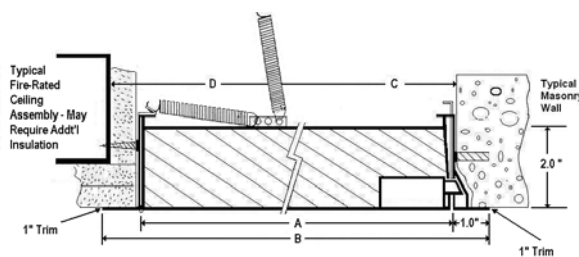


All Fire-Rated Models Shown in Chart at Left:

Most Sizes of Model FD In Stock at One of Our 7 US Warehouses for Next Day Shipping - See Stock List.



Wall Installation - FD-FDSS-HGFD Top View



Ceiling Installation - FD-FDSS-HGFD Side View

Order Format
 For Fire-Rated Models: **Style Code** - **Width** **Height** - **Latch** - **Optional Color Code FD & HGFD (Pg 12)**
 (U Standard, UM & UMI Optional)

Example: **HGFD-1212UMI-W**

INTERIOR ACCESS PANELS: FLUSH



MODEL TM



MODEL TMS STAINLESS STEEL

MULTI-PURPOSE FLUSH STEEL ACCESS PANEL:

TM and TMS Series

TM: Standard Panel (Wall or Ceiling)

Frame: 16 gauge steel with a 1" wall flange.

Door: 16 gauge steel access door mounted with mounted with 90° continuous, concealed hinge.

Finish: Gray powder coat primer.

Lock: Flush screwdriver-operated steel cam (C).

TMS: Standard Stainless Steel Panel (Wall or Ceiling)

Frame: 18 gauge stainless steel with 1" wall flange.

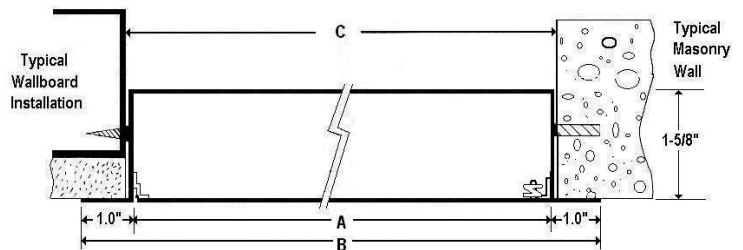
Door: 16 gauge stainless steel access door mounted with 90° continuous, concealed hinge.

Finish: 304 stainless - #4 satin finish.

Lock: Flush screwdriver-operated cam (C).

Options: Custom Colors, Double Door, Louvered Vents, Plexiglass View Window, Removeable Door (no hinge), Rainhood, Gasketing, Galvanized Finish (TMG), Cylinder Lock, Mortise Cam Latch, Mortise Deadbolt Lock, Mortise Slam Latch, Knob Cam, Torx, Spanner or Hex Head Cam.

See Optional Colors and Locks on Page 12.



Model TM

Model TMS

22 Sizes of TM and 8 Sizes TMS In Stock at one of our 7 US Warehouses for Next Day Shipping - See Stock List.

Door Sizes and Wall/Ceiling Openings: Models TM and TMS													
Dimensions in Inches • Weight in Pounds													
A-Model Size Width x Height	B-Outside Frame Dimensions		C-Wall Opening Dimensions		Shipping Weight	Latch(es)	A-Model Size Width x Height	B-Outside Frame Dimensions		C-Wall Opening Dimensions		Approx. Shipping Weight	Latch(es)
	Width	Height	Width	Height				Width	Height	Width	Height		
6" x 6"	8"	8"	6 3/8"	6 3/8"	4 lbs.	1	18" x 18"	20"	20"	18 3/8"	18 3/8"	12 lbs.	3
8" x 8"	10"	10"	8 3/8"	8 3/8"	4 lbs.	1	20" x 24"	22"	26"	20 3/8"	24 3/8"	15 lbs.	4
8" x 12"	10"	14"	8 3/8"	12 3/8"	6 lbs.	1	20" x 30"	22"	32"	20 3/8"	30 3/8"	20 lbs.	4
10" x 10"	12"	12"	10 3/8"	10 3/8"	6 lbs.	1	22" x 22"	24"	24"	22 3/8"	22 3/8"	17 lbs.	4
12" x 12"	14"	14"	12 3/8"	12 3/8"	7 lbs.	1	22" x 30"	24"	32"	22 3/8"	30 3/8"	22 lbs.	4
12" x 16"	14"	18"	12 3/8"	16 3/8"	9 lbs.	1	22" x 36"	24"	38"	22 3/8"	36 3/8"	24 lbs.	5
12" x 18"	14"	20"	12 3/8"	18 3/8"	10 lbs.	1	24" x 24"	26"	26"	24 3/8"	24 3/8"	18 lbs.	4
12" x 24"	14"	26"	12 3/8"	24 3/8"	12 lbs.	2	24" x 30"	26"	32"	24 3/8"	30 3/8"	22 lbs.	5
14" x 14"	16"	16"	14 3/8"	14 3/8"	9 lbs.	1	24" x 36"	26"	38"	24 3/8"	36 3/8"	25 lbs.	5
16" x 16"	18"	18"	16 3/8"	16 3/8"	11 lbs.	1	30" x 30"	32"	32"	30 3/8"	30 3/8"	30 lbs.	5
16" x 20"	18"	22"	16 3/8"	20 3/8"	13 lbs.	2	36" x 36"	38"	38"	36 3/8"	36 3/8"	41 lbs.	5

Custom Sizes and Special Modifications Available Upon Request

Order Format

For Above Models: **Style Code** **Width** **Height** **Lock (C Standard or Optional)** **Optional TM Color**

Example: **TM-2424C-W**

INTERIOR ACCESS PANELS: CONCEALED FRAME



CONCEALED FRAME FLUSH ACCESS PANELS FOR DRYWALL OR PLASTER: WB, PW, and PWE, Series

WB: Wallboard Bead (Wall or Ceiling)

Frame: 16 gauge with 1" drywall bead that can be taped and mudded.
Door: 16 gauge steel with concealed continuous hinge.
Finish: Gray powder coat primer.
Lock: Flush screwdriver-operated cam (C).

PW: Plaster (Wall or Ceiling)

Frame: 16 gauge steel with 3/4" plasterguard for application of plaster.
Door: 16 gauge steel with concealed continuous hinge.
Finish: Gray powder coat primer.
Lock: Flush screwdriver-operated cam (C).

PWE: Plaster (Wall or Ceiling)

Frame: 16 gauge steel with 3/4" plasterguard with an additional 3" wide wing of metal lath for a plaster application to the edge of the door.
Door: 16 gauge steel with concealed continuous hinge.
Finish: Gray powder coat primer.
Lock: Flush screwdriver-operated cam (C).

Options: Cylinder Lock, Knob Cam, Torx, Spanner or Hex Head Cam, Custom Colors, Plexiglass View Window, Removeable Door (no hinge). WB, & PW Options: Also include Mortise Cam Latch, Mortise Deadbolt Lock and Mortise Slam Latch.

See Optional Colors and Locks on Page 12.



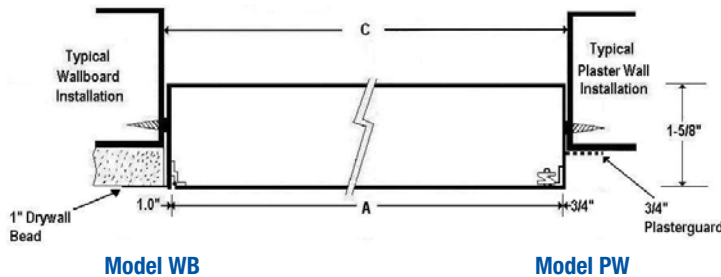
MODEL WB



MODEL PW



MODEL PWE



Model WB

Model PW

Door Sizes and Wall Openings				
A-Model Size	C-Wall Opening Dimension		Shipping Weight	Latch(es)
	WB	PW & PWE	WB,PW,PWE	
8" x 8"	8 1/2" x 8 1/2"	-	4 lbs.	1
10" x 10"	10 1/2" x 10 1/2"	-	5 lbs.	1
12" x 12"	12 1/2" x 12 1/2"	12 1/4" x 12 1/4"	7 lbs.	1
14" x 14"	14 1/2" x 14 1/2"	-	8 lbs.	1
16" x 16"	16 1/2" x 16 1/2"	16 1/4" x 16 1/4"	10 lbs.	1
16" x 20"	-	16 1/4" x 20 1/4"	12 lbs.	1
18" x 18"	18 1/2" x 18 1/2"	18 1/4" x 18 1/4"	12 lbs.	3
22" x 22"	22 1/2" x 22 1/2"	-	16 lbs.	4
22" x 30"	22 1/2" x 30 1/2"	-	21 lbs.	4
24" x 24"	24 1/2" x 24 1/2"	24 1/4" x 24 1/4"	19 lbs.	4

Custom Sizes and Special Modifications Available Upon Request

Most Sizes Above in Stock at One of Our 7 US Warehouses for Next Day Shipping - See Stock List.

Order Format	Style Code	Width	Height	Lock (C Standard or Optional)	Optional Color Code Pg 12
For Above Models:	Style Code	Width	Height	Lock (C Standard or Optional)	Optional Color Code Pg 12
Example: WB-1212SCH-R					

INTERIOR ACCESS PANELS: CONCEALED FRAME



MODEL CTWB



MODEL CT



MODEL CP

CONCEALED FRAME FLUSH ACCESS PANELS FOR PLASTER OR TILE/WALLBOARD INSERT: CP, CT and CTWB Series

CTWB: Recessed Door for Wallboard Insert: (Wall or Ceiling):
Door face is recessed 1" to accept wallboard insert to match surrounding surface. This access door provides the most seamless look of all JL models.

Frame: 16 gauge steel.

Door: 18 gauge steel, recessed 1" for drywall covering, with continuous hinge.

Finish: White powder-coat finish.

Lock: Flush screwdriver-operated cam (C).

CT: Recessed Door for Acoustic Tile Insert: (Wall or Ceiling):

Not for use with suspended ceiling -requires installation into joists.

Door face is recessed 1" to accept application of acoustic tile or wallboard to match surrounding surface.

Frame: 16 gauge steel.

Door: 18 gauge steel, recessed 1" for tile or drywall covering with continuous hinge.

Finish: White power-coat finish.

Lock: Flush screwdriver-operated cam (C).

CP: Recessed Panel for Plaster (Wall or Ceiling)

Door face has Plasterguard in 1/2" Recess, and the frame features 3" expanded metal lath wings to accept application of plaster to match surrounding plaster walls.

Frame: 16 gauge Steel with 3/4" plasterguard and with an additional 3" wide wing of metal lath for a plaster application to the edge of the door.

Door: Metal lath over 18 gauge steel with continuous hinge.

Finish: Gray powder coat primer.

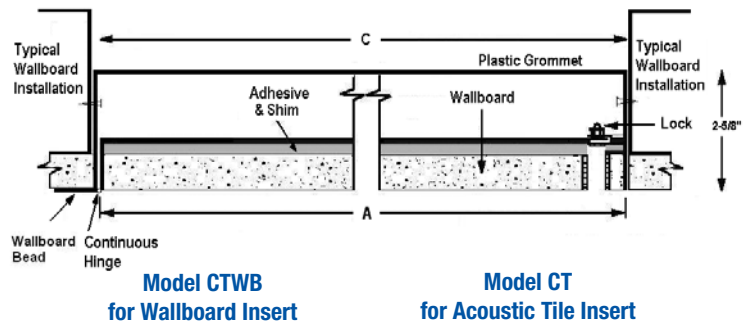
Lock: Flush screwdriver-operated cam (C).

See Optional Colors and Locks on Page 12.

Options: Cylinder Lock, Torx, Spanner or Hex Head Cam. CT and CTWB are available with recessed door depth from 1/4" to 7/8".

Door Sizes and Wall Openings					
A-Model Size	C-Wall Opening Dimension CT, CTWB & CP	Approx. Shipping Weight			Latch(es)
		CT	CTWB	CP	
12" x 12"	12 1/4" x 12 1/4"	7 lbs.	7 lbs.	9 lbs.	1
12" x 24"	12 1/4" x 24 1/4"	11 lbs.	11 lbs.	14 lbs.	2
18" x 18"	18 1/4" x 18 1/4"	12 lbs.	12 lbs.	14 lbs.	3
22" x 30"	22 1/4" x 30 1/4"	21 lbs.	21 lbs.	21 lbs.	4
24" x 24"	24 1/4" x 24 1/4"	19 lbs.	19 lbs.	20 lbs.	4
24" x 36"	24 1/4" x 36 1/4"	27 lbs.	27 lbs.	31 lbs.	5

Custom Sizes and Special Modifications Available Upon Request



Model CTWB for Wallboard Insert

Model CT for Acoustic Tile Insert

Order Format

For Above Models:

Style Code

Width

Height

Lock (C Standard or Optional)

Optional Color Code

Example: CTWB-1212CA



WEATHER-RESISTANT FLUSH ACCESS PANEL: XP Series

XPA: Weather-resistant Flush Access Panel

Frame: 16 Gauge Galvanized Steel Frame with 1" Flange.
Door: 2" Thick Insulated .040 Aluminum Door with Continuous Stainless Steel Hinges and EPDM Foam Rubber Bulb Seal Gasketing.
Finish: Gray powder coat primer.
Lock: Non-locking (H) Die Cast Zinc Handles for Exterior, Interior has Non-locking handle.

XPS: Weather-resistant Stainless Steel Access Panel

Frame: 16 Gauge Stainless Steel Frame with 1" Flange.
Door: 2" Thick Insulated 20 Gauge Stainless Steel Door with Continuous Stainless Steel Hinges and EPDM Foam Rubber Bulb Seal Gasketing.
Finish: #304 Stainless – #4 Finish.
Lock: Non-locking (H) Die Cast Zinc Handles for Exterior, Interior has Non-locking handle.

XPA-PWE: Weather-resistant Access Panel For Plaster and Stucco Exteriors

Frame: 16 Gauge Galvanized Steel Frame with 3" Galvanized Lath Wing.
Door: 2" Thick Insulated .040 Aluminum Door with Continuous Stainless Steel Hinges and EPDM Foam Rubber Bulb Seal Gasketing.
Finish: Gray powder coat primer.
Lock: Non-locking (H) Die Cast Zinc Handles for Exterior, Interior has Non-locking handle.

XPS-PWE: Weather-resistant Stainless Steel Access Panel For Plaster and Stucco Exteriors

Frame: 16 Gauge Stainless Steel Frame with 3" Galvanized Lath Wing.
Door: 2" Thick Insulated 20 Gauge Stainless Steel Door with Continuous Stainless Steel Hinges and EPDM Foam Rubber Bulb Seal Gasketing.
Finish: #304 Stainless – #4 Stainless Steel.
Lock: Non-locking (H) Die Cast Zinc Handles for Exterior, Interior has Non-locking handle.

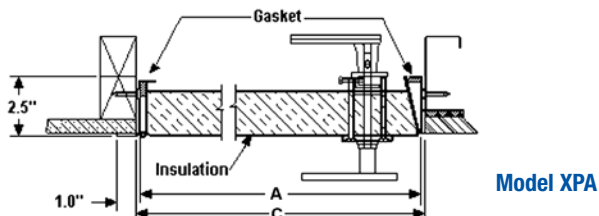
Options at additional Cost: Colors on Page 12. Optional Chrome-Plated Locking Handle (HL).



MODEL XPA



MODEL XPA-PWE



Model XPA

Door Sizes and Wall Openings: Models XPA, XPS, XPA-PWE, AND XPS-PWE							
A-Models XPA and XPS Sizes	C-Wall Opening W x H	Number of Handles	Approximate Shipping Weight	A-Models XPA and XPS Sizes	C-Wall Opening W x H	Number of Handles	Approximate Shipping Weight
12" x 12"	12 3/8" x 12 3/8"	1	11 lbs.	24" x 30"	24 3/8" x 30 3/8"	2	40 lbs.
14" x 14"	14 3/8" x 14 3/8"	1	15 lbs.	24" x 36"	24 3/8" x 36 3/8"	2	42 lbs.
18" x 18"	18 3/8" x 18 3/8"	1	19 lbs.	24" x 48"	24 3/8" x 48 3/8"	2	57 lbs.
20" x 24"	20 3/8" x 24 3/8"	1	30 lbs.	30" x 30"	30 3/8" x 30 3/8"	2	44 lbs.
20" x 30"	20 3/8" x 30 3/8"	1	32 lbs.	30" x 36"	30 3/8" x 36 3/8"	2	56 lbs.
22" x 30"	22 3/8" x 30 3/8"	1	34 lbs.	36" x 36"	36 3/8" x 36 3/8"	2	61 lbs.
22" x 36"	22 3/8" x 36 3/8"	2	40 lbs.	36" x 48"	36 3/8" x 48 3/8"	2	75 lbs.
24" x 24"	24 3/8" x 24 3/8"	2	27 lbs.	48" x 48"	48 3/8" x 48 3/8"	4	108 lbs.

Custom Sizes Available Upon Request

Order Format _____ - _____ - _____ - _____ - _____

For Above Models: **Style Code** **Width** **Height** **Lock (H or HL)** **Optional Color Code Pg 12**

Example: XPA-1212HL- B

SECURITY ACCESS PANELS



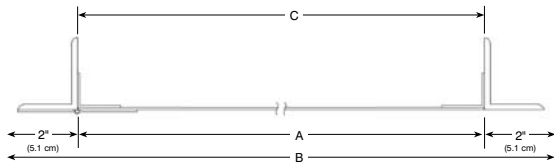
MODEL SP

Shown with Detention Deadbolt Lock Installed

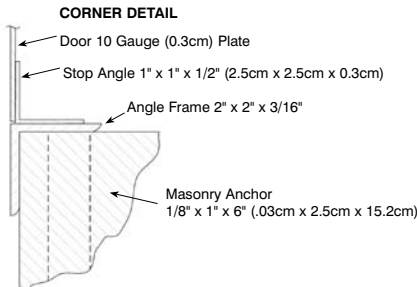


MODEL HSP

Shown with Mortise Deadbolt Lock Installed



Model SP



DETENTION DEADLOCK PREP (DDP)

Provided standard with the SP or HSP access panels.

The door will be prepped for a right or left-handed, heavy-duty lock to be provided and installed by others.

The prep plate is factory welded, primed & painted as an integral part of the door.

FLAT FRAME STEEL SECURITY PANEL: SP Series

Frame: 2" x 2" x 3/16" angle frame with 2" Flange, welded at corners

Door: 10 gauge plate steel door mounted on two heavy-duty detention hinges welded to the frame.

Finish: Gray powder coat primer.

Lock: Detention Deadlock Prep (DDP) provided standard with SP and HSP access panels. Lock to be provided by others. See page 9 for lock options.

Anchors: Heavy duty steel masonry anchors welded to frame at factory.

FLAT FRAME STEEL HIGH SECURITY PANEL: HSP Series

Frame: 2" x 3" x 3/16" angle frame with 2" Flange, welded at corners.

Door: 7 gauge box-formed steel door mounted on two heavy-duty 4" butt hinges welded to the frame.

Finish: Gray powder coat primer .

Lock: Detention Deadlock Prep (DDP) provided standard with SP and HSP access panels. Lock to be provided by others. See page 9 for lock options.

Anchors: Heavy duty steel masonry anchors welded to frame at factory.

Options for SP and HSP: #4 Finish Stainless Steel, Detention Slam Lock Prep (DSP), Mortise Deadbolt Prep (MDP) or Mortise Cylinder Cam Lock Prep (MP)- Locks to be Provided by Others. Detention Deadlock Installed (DD15010), Detention Slam Lock Installed (DD15017), Mortise Deadbolt Installed (MDP-SL-AMP or MDP-SL-1E74), Mortise Cylinder Cam Lock Installed (MP-SL-AMP or MP-SL-1E74).

See Optional Colors on Page 12

See Lock Selections on Page 9.

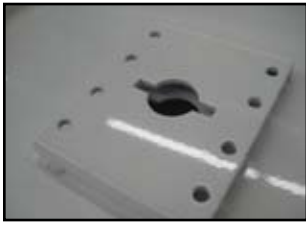
Door Sizes and Wall Openings: Model SP and HSP						
A-Door Size Width x Height	B-Outside Frame Dimensions		C-Wall Opening		Approx. Shipping Weight	Latch(es)
	Width	Height	Width	Height		
8" x 8"	12"	12"	8 3/4"	8 3/4"	16 lbs.	1
10" x 10"	14"	14"	10 3/4"	10 3/4"	20 lbs.	1
12" x 12"	16"	16"	12 3/4"	12 3/4"	24 lbs.	1
14" x 14"	18"	18"	14 3/4"	14 3/4"	29 lbs.	1
16" x 16"	20"	20"	16 3/4"	16 3/4"	32 lbs.	1
18" x 18"	22"	22"	18 3/4"	18 3/4"	38 lbs.	1
24" x 24"	28"	28"	24 3/4"	24 3/4"	52 lbs.	1
24" x 36"	28"	40"	24 3/4"	36 3/4"	72 lbs.	2
24" x 48"	28"	52"	24 3/4"	48 3/4"	90 lbs.	2

Add 1 lb. for Mortise Deadbolt Prep, or 4 lbs. for Detention Lock installed. **For Model SP Panels of 32" or Larger, We Recommend Security Screws be Installed with Lock for Additional Security. Custom Sizes and Modifications Available Upon Request

Order Format

For Above Models: **Style Code** **Width** **Height** **Lock (DDP Standard or Optional)** **Color Code (page 12)**

Example: **HSP-1212MDP-SL-AMP-FBK**



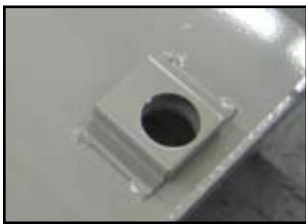
DETENTION SLAM LOCK PREP (DSP)

This option is available at no additional cost and includes a door which is prepped for a detention slam latch to be provided and installed by others. The prep plate is factory welded, primed & painted as an integral part of the door. Lock and mounting bolts are not included. Please specify the manufacturer and model number of the lock to ensure compatibility. (Not available on Security Fire Extinguisher Cabinets)



Mortise Deadbolt Prep (MDP)

This option is available at additional cost and includes a lock mechanism which is prepped for a mortise cylinder and cam to be provided and installed by others. The prep includes a 2-1/2" x 3-1/2" x 1-3/4" case with installed Lori assembly with 1" x 5/8" throw. Lock and mounting bolts are not included. The mortise cylinder must be 1-1/8" (3.2cm) in diameter and the recommended cylinder length is 1-1/2" (3.8 cm). (A longer cylinder can be adapted to it by using a rose spacer. The cam must be an Adam Rite cam.)



Mortise Cylinder Cam Lock Prep (MP)

This option is available at no additional cost and includes a door which is prepped for a mortise cylinder and cam to be provided for and installed by others. Lock and mounting bolts are not included. The mortise cylinder must be 1-1/8" (3.2cm) in diameter and the recommended cylinder length is 1-1/2" (3.8 cm). (A longer cylinder can be adapted to it by using a rose spacer) The cam must be 3/4" (1.91 cm) long, as measured from the edge of the cylinder to the tip of the cam.

Detention Deadlock Installed (DDI5010)

Right-handed, heavy-duty detention lock installed at the factory. The prep plate is factory welded, primed & painted as an integral part of the door. Model 5010 is a medium security deadbolt with a single piece, paracentric key cylinder in a high tensile strength, alloy steel case, keyed 1 side. The deadbolt is fabricated of 1-1/2" x 3/4" hot rolled steel with a 5/8" throw. All steel parts are plated for corrosion resistance. Dimensions 1-1/4" x 4-1/2" x 3". Keys to be ordered separately, please specify the number of keys to be ordered with this lock. Security Torx bolts secure the lock to the door.



Detention Slam Lock Installed (DDI5017)

Right-handed, heavy-duty detention lock installed at the factory. The prep plate is factory welded, primed & painted as an integral part of the door. Model 5017 is a medium security slam latch with a stainless steel latchbolt with 1" x 7/16" throw. Slam-locks automatically when door is closed. Lock is constructed with a single piece, bronze alloy paracentric key cylinder, 5 tempered brass lever tumblers keyed one side(K1) in a high-tensile strength alloy steel case. All steel parts plated for corrosion resistance. Dimensions: 1 1/4" x 4" x 2 3/4". Keys to be ordered separately, please specify the number of keys to be ordered with this lock. Security Torx bolts secure the lock to the door.



Mortise Deadbolt Installed (MDP-SL-AMP or MDP-SL-1E74)

Mortise deadbolt installed at the factory includes a 2-1/2" x 3-1/2" x 1-3/4" case welded to the door with installed Lori assembly with 1" x 5/8" throw. Select from lock models (AMP) in satin chrome with Yale Standard cam and keys (drilled 6 pin, keyed 5 pin), or 1E74 with a blank construction core to be keyed on site. Both locks are machined from solid brass bar stock. The mortise cylinder is 1-1/8" (3.2cm) in diameter and the cylinder length is 1-1/2" (3.8 cm). Security Torx bolts secure the lock to the door.



Mortise Cylinder Cam Lock Installed (MP-SL-AMP or MP-SL-1E74)

Cylinder lock with heavy-duty 7/16" cam installed at the factory. The prep plate is factory welded, primed & painted as an integral part of the door. Select from lock models (AMP) with 2 Yale Standard keys, or 1E74 with a blank construction core to be keyed on site. Both locks are machined from solid brass bar stock. The mortise cylinder is 1-1/8" (3.2cm) in diameter and the cylinder length is 1-1/2" (3.8 cm).



INTERIOR ACCESS PANELS: SPECIALTY



MODEL ATM PANEL

**VERSATILE
MANUFACTURING
CAPABILITIES**

We're Ready to Help—Just Ask Us!

GASKETED ACCESS PANEL: ATM Series

This Gasketed Panel is ideal for laboratories, pressurized rooms, climate-controlled rooms, dusty or high-moisture environments. The frame and door are specially designed to form a tight seal reducing air infiltration.

Frame & Trim: 16 gauge CRS with 3/8" retainer channel for gasket, and 1" trim flange.

Door: 16 gauge rolled and welded. Cam-operated closure with knurled knob compresses door tightly to gasket.

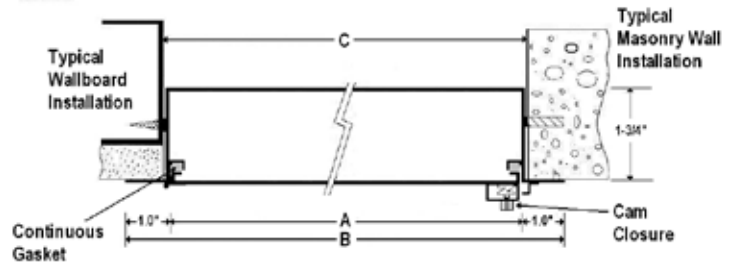
Gasket: Fully gasketed on all sides with EPDM rubber.

Finish: Gray powder coat primer.

Options: Flush Handle (shown on website), stainless, galvanized.

Optional Colors on Page 12

A-Model Size Width x Height	B-Outside Frame Dimensions		C-Wall Opening Dimensions		Approx. Shipping Weight	Latch(es)
	Width	Height	Width	Height		
12" x 12"	14"	14"	12 3/8"	12 3/8"	7 lbs.	1
18" x 18"	20"	20"	18 3/8"	18 3/8"	16 lbs.	1
24" x 24"	26"	26"	24 3/8"	24 3/8"	28 lbs.	2
24" x 36"	26"	38"	24 3/8"	36 3/8"	42 lbs.	2



Model ATM



MODEL SMT PANEL

SURFACE-MOUNT ACCESS PANEL: SMT Series

The SMT is an economical surface-mounting panel that quickly and easily installs with screws through the corners of the frame. It is suitable for installation in wallboard or plaster.

Trim & Door: 1" wide, 16 gauge trim with screw holes in each corner for mounting. 16 gauge door operates on a continuous hinge.

Finish: Gray powder coat primer.

Lock: Screwdriver-operated cam lock (C).

Options: #4 Satin Finish Stainless Steel, Custom Colors, Knob Cam, Torx, Spanner or Hex Head Cam.

See Optional Colors and locks on Page 12.

A-Model Size Width x Height	B-Outside Frame Dimensions		C-Wall Opening Dimensions		Approx. Shipping Weight	Latch(es)
	Width	Height	Width	Height		
8" x 8"	10"	10"	8"	8"	3 lbs.	1
12" x 12"	14"	14"	12"	12"	7 lbs.	1
16" x 16"	18"	18"	16"	16"	12 lbs.	1
24" x 24"	26"	26"	24"	24"	27 lbs.	4

Order Format

For Above Models: **Style Code** **Width** **Height** **Lock for SMT Only (C Standard or Optional)** **Color Code (page 12)**

Example: **ATM-1818**



ALUMINUM ANGLE FLOOR DOOR: AAF Series

Construction: Frames are extruded aluminum shapes specially designed for floor doors. This door is made from reinforced 1/4 diamond plate for greater strength.

Hardware: Stainless steel hinges are bolted to the door and frame to minimize galvanic corrosion. All fasteners are tamperproof stainless steel bolts. Stainless steel slam locks, gas assist opener, hold open arm.

Finish: Mill with bituminous coating below grade.

Load: 300 lbs./ft.²

**WE NOW HAVE A NEW LINE OF FIRE-RATED FLOOR DOORS
WITH RATINGS UP TO 3 HOURS
ENTER "FFD" IN OUR WEBSITE SEARCH BAR TO FIND
INFORMATION ONLINE**



Model	Clear Opening	Single (S) Door	Approx. Weight
AAF-2424S	23" x 23"	S	60 lbs.
AAF-2436S	23" x 35"	S	76 lbs.
AAF-3030S	29" x 29"	S	81 lbs.
AAF-3036S	29" x 35"	S	92 lbs.
AAF-3636S	35" x 35"	S	100 lbs.
AAF-3048S	29" x 47"	S	115 lbs.
AAF-3648S	35" x 47"	S	118 lbs.
AAF-4242S	41" x 41"	S	120 lbs.

Custom Sizes Available Upon Request

Model	Clear Opening	Double (D) Door	Approx. Weight
AAF-4848D	47" x 47"	D	154 lbs.
AAF-4860D	47" x 59"	D	173 lbs.
AAF-4872D	47" x 71"	D	208 lbs.
AAF-6060D	59" x 59"	D	215 lbs.

Custom Sizes Available Upon Request

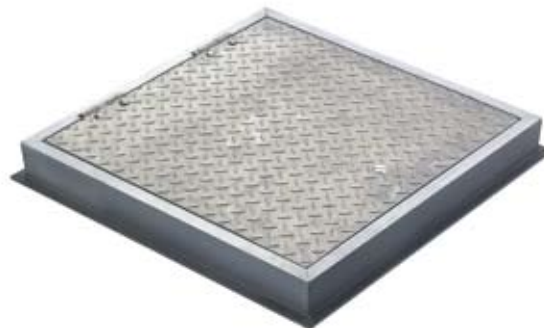
ALUMINUM GUTTER FLOOR DOOR: AGF Series

Construction: The door frames are an engineered gutter frame design in extruded aluminum shapes specially designed for floor doors. The gutter is equipped with 1 1/2" FTP drain coupling allowing for water runoff. The door is made from reinforced 1/4" diamond plate for greater strength. The door is hinged such that when open, the door does not penetrate the gutter, thus preventing problems due to freezing or contaminating build-up.

Hardware: Stainless steel hinges are bolted to the door and frame to minimize galvanic corrosion. All fasteners are tamperproof stainless steel bolts. Stainless steel slam locks, gas assist opener, hold open arm.

Finish: Mill with bituminous coating below grade.

Load: 300 lbs./ft.²



Model	Clear Opening	Single (S) Door	Approx. Weight
AGF-2424S	20 1/2" x 20 1/2"	S	60 lbs.
AGF-2436S	20 1/2" x 32 1/2"	S	76 lbs.
AGF-3030S	26 1/2" x 26 1/2"	S	81 lbs.
AGF-3036S	26 1/2" x 32 1/2"	S	92 lbs.
AGF-3636S	32 1/2" x 32 1/2"	S	100 lbs.
AGF-3048S	26 1/2" x 44 1/2"	S	115 lbs.
AGF-3648S	32 1/2" x 44 1/2"	S	118 lbs.
AGF-4242S	38 1/2" x 38 1/2"	S	120 lbs.

Custom Sizes Available Upon Request

Model	Clear Opening	Double (D) Door	Approx. Weight
AGF-4848D	44 1/2" x 44 1/2"	D	154 lbs.
AGF-4860D	44 1/2" x 56 1/2"	D	173 lbs.
AGF-4872D	44 1/2" x 68 1/2"	D	208 lbs.
AGF-6060D	56 1/2" x 56 1/2"	D	215 lbs.

Custom Sizes Available Upon Request

OPTIONS

LOCK OPTIONS FOR: TM, TMS, WB, PWE, SMT AND PW Series



CYLINDER LOCK (L)



MORTISE CAM LATCH PREP (MP)
INSTALLED (MPI)



MORTISE DEABOLT PREP (LL)
INSTALLED (LLI)



MORTISE SLAM LATCH PREP (UM)
INSTALLED (UMI)



KNOB CAM (KK)



TORX HEAD CAM (CT)



HEX HEAD CAM (CA)



SPANNER HEAD CAM (SHC)

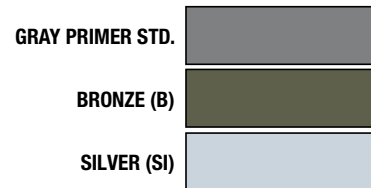
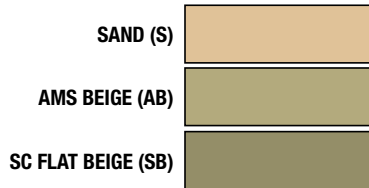


RAINHOOD (RH)



GASKETING (CG)

COLOR OPTIONS:



Note: Colors are approximate. For color/finish samples contact customer service.

WARRANTY: All access panel products carry a one year warranty after date of shipment against defects in materials and workmanship. We will replace or repair any product found defective within this period at our discretion. No other warranty express or implied is valid.

MANUFACTURING/WAREHOUSING LOCATIONS



ACPG WEST COAST
WAREHOUSE
RENTON, WASHINGTON



ACPG HEADQUARTERS
JL INDUSTRIES

4450 W. 78TH STREET CIRCLE,
BLOOMINGTON, MN 55435
PHONE: 800-554-6077
FAX: 952-835-2218
SALES@JLINDUSTRIES.COM
WWW.JLINDUSTRIES.COM

ACPG CHICAGO
WAREHOUSE
WOOD DALE, ILLINOIS

ACPG EAST COAST
WAREHOUSE
LANCASTER, PENNSYLVANIA



ACPG WEST COAST
SAMSON PRODUCTS

6285 RANDOLPH STREET, COMMERCE, CA 90040
PHONE: 800-554-6077 FAX: 952-835-2218
E-MAIL: SALES@SAMSONPRODUCTS.COM
WEB SITE: WWW.SAMSONPRODUCTS.COM

ACPG ATLANTA
WAREHOUSE
ATLANTA, GEORGIA



ACPG SOUTHEAST
THOMAS ENTERPRISES

5765 CORPORATION CIRCLE, FORT MYERS, FL 33905
PHONE: 800-780-7501 FAX: 239-693-7501
E-MAIL: SALES@THOMASE.COM
WEB SITE: WWW.THOMASE.COM

ACPG SOUTH
WAREHOUSE
GRAND PRAIRIE, TEXAS

The Activar Construction Products Group (ACPG) consists of 5 affiliated companies that serve the commercial construction industry. Our multiple product lines are a single source for architects and distributors. Air Louvers manufactures products for the openings market with door lites, louvers and rated-glass. Hiawatha is known for its quality architectural door hardware and frameless shower door products. JL Industries is an industry leader in fire protection, providing fire extinguishers, AEDs and cabinets, access panels, roof opening products and entrance flooring systems. Samson Products manufactures many of the products sold under the JL label and distributes JL products on the West Coast. Thomas Enterprises is our Southeast distributor for JL products and has a state-of-the-art aluminum fabrication facility for fire extinguisher cabinets sold under the Thomas and JL labels.