



# ROOF ACCESSORIES BY DUR-RED PRODUCTS

**DIVISION 07 72 33**

**DIVISION 07 72 36**

**DIVISION 08 62 00**

ROOF HATCHES  
SAFETY RAILINGS  
SAFETY POSTS  
EQUIPMENT HATCHES  
SMOKE VENTS  
SKYLIGHTS



ACTIVAR CONSTRUCTION PRODUCTS GROUP INC.





## DURA-HATCH SERIES™ ROOF HATCHES

*Provides safe and easy access to rooftops from inside commercial buildings*

**Model:** RHU

**Material:** Steel is 14 gauge galvalume with 22 gauge cover liner. Aluminum is 11 gauge with 22 gauge cover liner.

**Finish:** Gray texture powder coat on steel, silver texture powder coat on aluminum

**Insulation:** 1" polyisocyanurate on curb and in cover

**Hardware:** Pressure intensifier with compression spring, hold-open arm and latches

**Sizes:** Minimum size 24" x 24", Maximum size 48" x 120"

**Options:** All-but-curb™, curb-mount, double-wall curb, standing seam curb, curb heights, stainless steel hardware, 2" polyiso insulation



## EQUIPMENT DURA-HATCH SERIES™ ROOF HATCHES

*Ideal for installing and servicing large equipment through the roof*

**Model:** REH

**Material:** Steel is 14 gauge galvalume with 22 gauge cover liner. Aluminum is 11 gauge with 22 gauge cover liner.

**Finish:** Gray powder coat on steel, silver texture powder coat on aluminum

**Insulation:** 1" polyisocyanurate on curb and in cover

**Hardware:** Pressure intensifier with compression spring, hold-open arm and latches

**Sizes:** Minimum 48" x 48". Maximum 72" x 96"

**Clear Opening:** Minus 8" on width and minus 8" on length

**Options:** Curb-mount, double-wall curb, curb heights, stainless steel hardware, 2" polyiso insulation



## DURA-HATCH VIEW SERIES™ DOMED ROOF HATCHES

*Cover includes domes that provide natural daylighting for safer roof access*

**Model:** RHUV

**Material:** Steel is 14 gauge galvalume with 22 gauge cover liner. Aluminum is 11 gauge with 22 gauge cover liner.

**Finish:** Gray texture powder coat on steel, silver texture powder coat on aluminum

**Domes:** Clear over white acrylic

**Insulation:** 1" polyisocyanurate on curb and in cover

**Hardware:** Pressure intensifier with compression spring, hold-open arm and latches.

**Sizes:** Minimum 30" x 30. Maximum 36" x 60" or 48" x 48"

**Options:** All-but-curb™, curb-mount, double wall curb, standing seam curb, curb heights, stainless steel hardware, 2" polyiso insulation

**Dome Options:** Acrylic or polycarbonate, clear or white, single dome



## EQUIPMENT DURA-HATCH VIEW SERIES™ DOMED ROOF HATCHES

*Add daylight to areas where equipment access from rooftops is needed*

**Model:** REHV

**Material:** Steel is 14 gauge galvalume with 22 gauge cover liner. Aluminum is 11 gauge with 22 gauge cover liner.

**Finish:** Gray powder coat on steel, silver texture powder coat on aluminum

**Domes:** Clear over white acrylic

**Insulation:** 1" polyisocyanurate on curb and in cover

**Hardware:** Pressure intensifier with compression spring, hold-open arm and latches

**Sizes:** Minimum 72" x 72". Maximum 72" x 96"

**Clear Opening:** Minus 8" on width and minus 8" on length

**Options:** Curb-mount, double-wall curb, curb heights, stainless steel hardware, 2" polyiso insulation

**Dome Options:** Acrylic or polycarbonate, clear or white, single dome



## FAHRENHEIT SERIES™ DOUBLE DOOR SMOKE VENTS

*Automatically opens during a fire, releasing harmful smoke and fumes*

**Model:** RVF

**Material:** Curb is 14 gauge galvanized steel and cover is 11 gauge extruded aluminum with 24 gauge galvanized steel liner

**Finish:** Silver texture powder coat

**Insulation:** 1" polyisocyanurate on curb and in cover

**Certifications:** UL793 listed and labeled up to 48" x 96"

**Operation:** Torsion springs automatically open covers when 165°F fusible link melts or with exterior pull handle

**Sizes:** Minimum 48" x 48. Maximum 60" x 96"

**Options:** Curb-mount, double-wall curb, standing seam curb, curb heights, other fusible link temperatures, electrical McCabe links



## FAHRENHEIT VIEW SERIES™ DOMED DOUBLE DOOR SMOKE VENTS

*Domed covers provide natural daylighting where smoke vents are installed*

**Model:** RVFV

**Material:** Curb is 14 gauge galvanized steel and cover is 11 gauge extruded aluminum

**Finish:** Silver texture powder coat

**Domes:** Clear over white acrylic

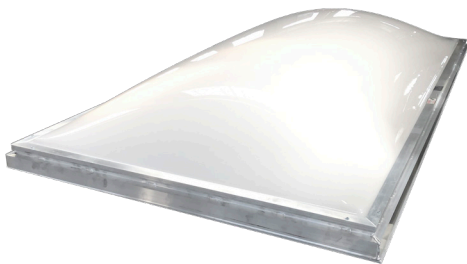
**Insulation:** 1" polyisocyanurate on curb and in cover

**Operation:** Torsion springs automatically open covers when 165°F fusible link melts or with exterior pull handle

**Sizes:** Minimum 48" x 48. Maximum 72" x 96"

**Options:** Curb-mount, double-wall curb, standing seam curb, curb heights, other fusible link temperatures, electrical McCabe links

**Dome Options:** Acrylic or polycarbonate, clear or white, single dome



## SPOTLIGHT SERIES™ SKYLIGHT

*Provides natural daylighting in commercial buildings*

**Model:** RLV

**Material:** Curb-mounted extruded aluminum frame with sloping condensation gutter for drainage

**Domes:** Clear over white acrylic

**Sizes:** Minimum 14" x 14". Maximum 48" x 96"

**Dome Options:** Acrylic or polycarbonate, clear or white, single dome

**Options:** 6" Self-flashing curb with 18 gauge galvanized steel or 11 gauge aluminum. Self-flashing curb heights up to 18".



## SECURITY GRILLES FOR SMOKE VENTS

*Add security and fall protection to rooftop smoke vents.*

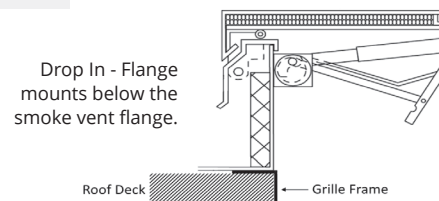
**Model:** RSG

**Material:** 1/2" Diameter steel rod with 6" x 12" spacing

**Flange:** 1-1/4" x 1-1/4" 14 gauge galvanized steel angle drop-in flange for mounting prior to and underneath the smoke vent flange

**Sizes:** Minimum 48" x 48", Maximum 60" x 96"

**Options:** Bolt-in flange that mounts underneath/inside smoke vent, various bar spacings





## SAFETY RAILING SYSTEMS FOR BOLT ON: RSHWB

*Fall Protection for rooftop openings that mounts to curb flashing*

**Material:** 1-5/8" x .065" (16 gauge) galvanized steel tube rails and posts, CRS plate mounting brackets

**Gate:** Self closing, self latching, telescoping for 30-48" openings

**Finish:** Yellow powder coat

**Hardware:** Black plastic tubing caps, black steel latch assembly, black steel adjustable-force hinges, zinc-plated steel nuts and bolts

**Sizes:** Minimum: 24" x 24". Maximum: 48" x 120"



## SAFETY LADDER POST FOR ROOF HATCHES

*A ladder post that bolts onto ladder rungs to provide safe ingress and egress from a ladder to a rooftop.*

**Model:** LP-4-DR

**Material:** 1-1/2" square steel tubing and 1/4" steel plate

**Finish:** Yellow powder coat

**Spring:** Stainless steel constant force aids in raising and lowering post

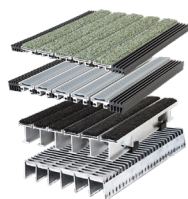
SEE MORE ACTIVAR CONSTRUCTION PRODUCTS GROUP OFFERINGS ON OUR WEBSITE [WWW.ACTIVARCPG.COM](http://WWW.ACTIVARCPG.COM)



FIRE PROTECTION



ACCESS PANELS



ENTRANCE MATS &  
GRILLES



VISION LITES



DOOR LOUVERS



PRIVACY PRODUCTS



ACTIVAR CONSTRUCTION PRODUCTS GROUP INC.

SEE MORE PRODUCT OFFERINGS ON OUR WEBSITE

[WWW.ACTIVARCPG.COM](http://WWW.ACTIVARCPG.COM)

## CONTACT US:

800-554-6077 [sales@activarcpg.com](mailto:sales@activarcpg.com)

## MANUFACTURING:

Bloomington, MN | Commerce, CA | Burnaby, BC

## WAREHOUSES:

Dallas, TX | Chicago, IL | Lancaster, PA | Seattle, WA | Atlanta, GA  
Fargo, ND | Omaha, NE | Ft Myers, FL | Salt Lake City, UT