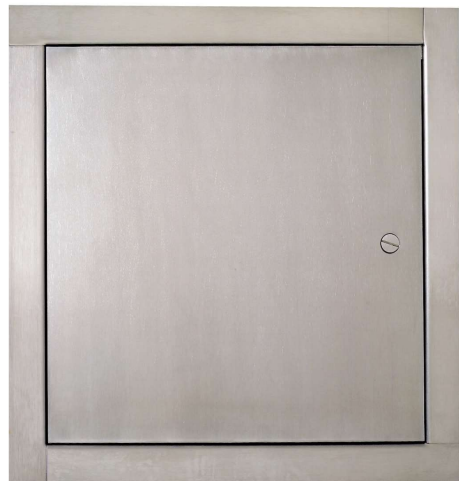




MODEL TM



MODEL TMS STAINLESS STEEL

MULTI-PURPOSE FLUSH STEEL ACCESS PANEL: TM™ Series

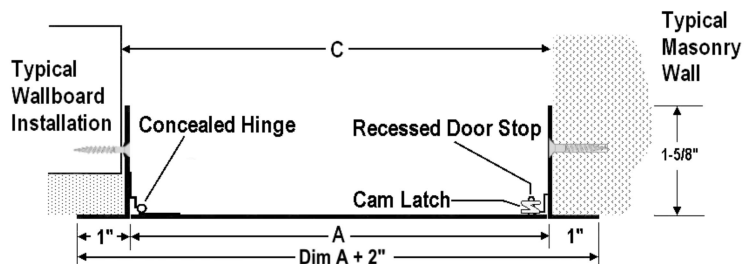
TM™: Standard Panel (Wall or Ceiling)

Frame: 16 Gauge steel with a 1" wall flange
 Door: 16 Gauge steel access door mounted with mounted with 90° continuous, concealed hinge
 Finish: White powder coat paint
 Lock: Flush screwdriver-operated steel cam (C)
 Sizes:
 Minimum Size: 6" x 6"
 Maximum Wall Size: 48" x 48"; Maximum Ceiling Size: 36" x 36"
 See the CAP Series if largrer sizes are needed

TMS™: Standard Stainless Steel Panel (Wall or Ceiling)

Frame: 18 Gauge stainless steel with 1" wall flange.
 Door: 16 Gauge stainless steel access door mounted with 90° continuous, concealed hinge
 Finish: 304 stainless with #4 satin finish
 Lock: Flush screwdriver-operated cam (C)
 Sizes:
 Minimum Size: 6" x 6"
 Maximum Size: 48" x 48"

Options: Double door, louvered vents, plexiglass view window, removeable door (no hinge), rainhood, gasketing, galvaneal steel (TMG), cylinder lock, mortise cam latch, mortise deadbolt lock, mortise slam latch, knob cam, torx, spanner or hex head cam, TM-14 gauge.



Latch and Lock Options for TM, TMS, TMG

Mortise Lock (M2)(U4)(B2)	Cylinder Lock (L)	Torx Head Cam (C2)	Spanner Head Cam (C3)	Hex Head Cam (C4)	Knob Cam (C5)

A-Order Size= Door Size WxH	C-Wall Opening Dimensions Fits ± 1/8" Opening Size		Approx. Shipping Weight	Number of Latches	A-Order Size= Door Size WxH	C-Wall Opening Dimensions Fits ± 1/8" Opening Size		Approx. Shipping Weight	Number of Latches
	Width	Height				Width	Height		
6" x 6"	6 1/2"	6 1/2"	4 lbs.	1	18" x 18"	18 1/2"	18 1/2"	12 lbs.	3
8" x 8"	8 1/2"	8 1/2"	4 lbs.	1	20" x 24"	20 1/2"	24 1/2"	15 lbs.	4
8" x 12"	8 1/2"	12 1/2"	6 lbs.	1	20" x 30"	20 1/2"	30 1/2"	20 lbs.	4
10" x 10"	10 1/2"	10 1/2"	6 lbs.	1	22" x 22"	22 1/2"	22 1/2"	17 lbs.	4
12" x 12"	12 1/2"	12 1/2"	7 lbs.	1	22" x 30"	22 1/2"	30 1/2"	22 lbs.	4
12" x 16"	12 1/2"	16 1/2"	9 lbs.	1	22" x 36"	22 1/2"	36 1/2"	24 lbs.	5
12" x 18"	12 1/2"	18 1/2"	10 lbs.	1	24" x 24"	24 1/2"	24 1/2"	18 lbs.	4
12" x 24"	12 1/2"	24 1/2"	12 lbs.	2	24" x 30"	24 1/2"	30 1/2"	22 lbs.	5
14" x 14"	14 1/2"	14 1/2"	9 lbs.	1	24" x 36"	24 1/2"	36 1/2"	25 lbs.	5
16" x 16"	16 1/2"	16 1/2"	11 lbs.	1	30" x 30"	30 1/2"	30 1/2"	30 lbs.	5
16" x 20"	16 1/2"	20 1/2"	13 lbs.	1	36" x 36"	36 1/2"	36 1/2"	41 lbs.	5

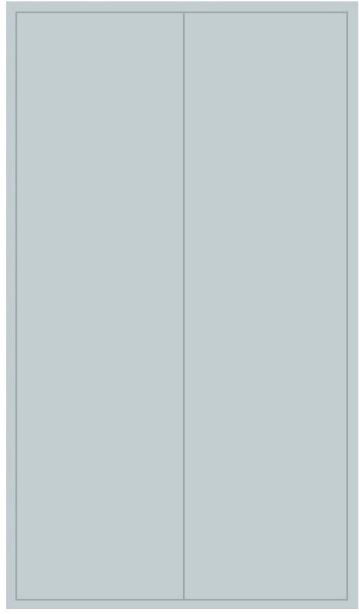
Custom Sizes and Special Modifications Available Upon Request, Sizes Not Shown May Be Ordered in 1/4" Increments

Examples of Optional Colors at Additional Cost - Painted Samples Available

B-Bronze	R-Red	BK-Black/FB Flat	S-Sand	AB-AMS Beige	SB-Flat Beige	G-Gray	SI-Silver
----------	-------	------------------	--------	--------------	---------------	--------	-----------



Need more access behind panels? Install a double leaf access door with a removable center mullion. Need ventilation? The TM louvered panel offers many options. Other options are available including removable doors, mortise locks, special lock preps, rainhoods, gasketing, or acrylic view windows.



MODEL TM-2460CG-D
(12 Latches)

DOUBLE DOOR ACCESS PANELS: TM Series

Available in steel or stainless steel in a wide range of sizes

Frame: 16 Gauge steel frame with 1-1/4" wall flange. 1-5/8" depth. Removable center mullion attached by 2 screws at top and bottom.

Door: 16 Gauge steel mounted with 90° continuous, concealed hinge

Finish: White powder coat paint

Lock & Latches: Flush screwdriver-operated steel cams in all positions, unless cylinder lock option is selected

Sizes:

Wall Size up to: 48" x 60"; Ceiling Size up to: 36" x 36"

Other size restrictions apply, consult customer service for sizes not shown.

Options & Special Features: See submittal to view all



View of removable mullion from underside of access panel.

Order Size = Door Size W x H Inches	C- Wall Opening Dimensions Fits ± 1/8" Opening Size	Number of Latches
Walls & Ceilings		
24 x 36	24 1/4 x 36 1/4	6
24 x 48	24 1/4 x 48 1/4	8
24 x 60	24 1/4 x 60 1/4	12
36 x 36	36 1/4 x 36 1/4	10
Wall Sizes Only Below		
36 x 48	36 1/4 x 48 1/4	12
36 x 54	36 1/4 x 54 1/4	14
48 x 24	48 1/4 x 24 1/4	8
48 x 30	48 1/4 x 30 1/4	10
48 x 36	48 1/4 x 36 1/4	10
48 x 48	48 1/4 x 48 1/4	12
48 x 60	48 1/4 x 60 1/4	16
Other sizes available in 1/4" increments		



MODEL TM-2424CW-L
Louvered Panel

LOUVERED ACCESS PANEL: TM Series

Available in steel

Frame: 16 Gauge steel frame with 1" wall flange

Door: 16 Gauge steel with louvers cut into the door panel

Finish: White powder coat paint

Lock & Latches: Flush screwdriver-operated steel cams in all positions, unless cylinder lock option is selected

Sizes:

Wall Size up to: 48" x 60"; Ceiling Size up to: 36" x 36"

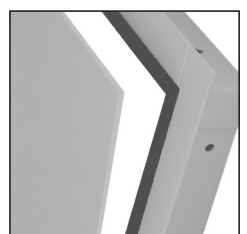
Other size restrictions apply, consult customer service for sizes not shown.

Options: See submittal to view all options.

OTHER OPTIONS FOR TM SERIES ACCESS PANELS:



Rainhood



Gasketing



Mortise Lock



View Window



Removable Door



CONCEALED FRAME: WALLBOARD & PLASTER

CONCEALED FRAME FLUSH ACCESS PANELS FOR DRYWALL OR PLASTER: TMW™, TMP™, and TME™

TMW: Wallboard Bead (Wall or Ceiling)

Frame: 16 Gauge with 1" drywall bead that can be taped and mudded

Door: 16 Gauge steel with concealed continuous hinge

Finish: White powder coat paint

Lock: Flush screwdriver-operated cam (C)

Sizes:

Minimum Size: 6" x 6"

Maximum Wall Size: 36" x 48" Maximum Ceiling Size: 36" x 36"

TMP: Recessed Plaster Flange (Wall or Ceiling)

Frame: 16 Gauge steel with 1 3/8" wide plaster flange, recessed 3/4"

Door: 16 Gauge steel with concealed continuous hinge

Finish: White powder coat paint

Lock: Flush screwdriver-operated cam (C)

Sizes:

Minimum Size: 6" x 6"

Maximum Wall Size: 36" x 48" Maximum Ceiling Size: 36" x 36"

TME: Recessed Plaster Flange Extended (Wall or Ceiling)

Frame: 16 Gauge steel with 2 3/4" wide plaster flange/steel lath recessed 3/4", for plaster application

Door: 16 Gauge steel with concealed continuous hinge

Finish: White powder coat paint

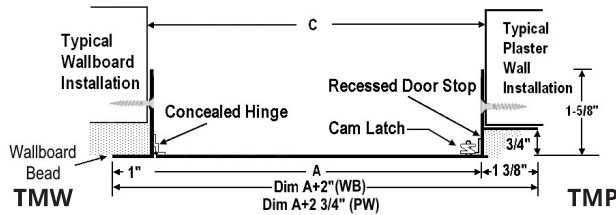
Lock: Flush screwdriver-operated cam (C)

Sizes:

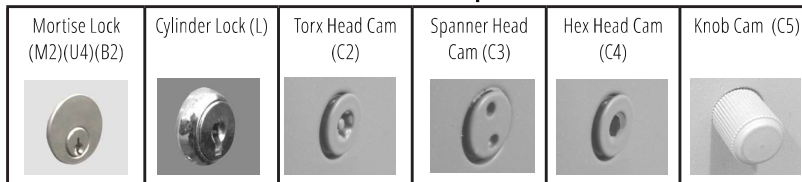
Minimum Size: 6" x 6"

Maximum Wall Size: 36" x 48" Maximum Ceiling Size: 36" x 36"

Options: Stainless or galvaneal, cylinder lock, knob cam, torx, spanner or hex head cam, plexiglass view window, removable door (no hinge). Drywall, & Plaster Options: Also include mortise cam latch, mortise deadbolt lock and mortise slam latch.



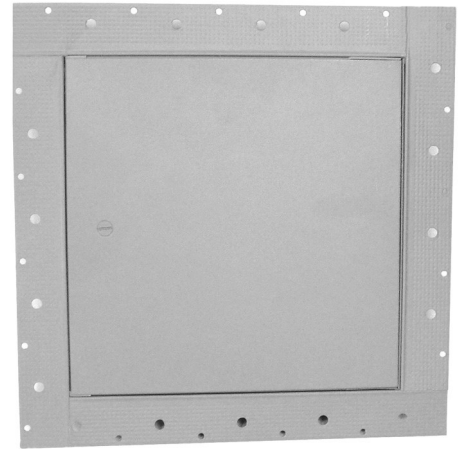
Latch and Lock Options



Door Sizes and Wall Openings				
A-Order Size = Door Size W x H	C-C- Wall Opening Dimensions Fits ± 1/8" Opening Size	Approx. Shipping Weight		Number of Latches
		TME	TMW, TMP, TME	
8" x 8"	8 1/2" x 8 1/2"	4 lbs.	1	
10" x 10"	10 1/2" x 10 1/2"	5 lbs.	1	
12" x 12"	12 1/2" x 12 1/2"	7 lbs.	1	
14" x 14"	14 1/2" x 14 1/2"	8 lbs.	1	
16" x 16"	16 1/2" x 16 1/2"	10 lbs.	1	
16" x 20"	16 1/2" x 20 1/2"	12 lbs.	1	
18" x 18"	18 1/2" x 18 1/2"	12 lbs.	3	
22" x 22"	22 1/2" x 22 1/2"	16 lbs.	4	
22" x 30"	22 1/2" x 30 1/2"	21 lbs.	4	
24" x 24"	24 1/2" x 24 1/2"	19 lbs.	4	

Custom Sizes and Special Modifications Available Upon Request

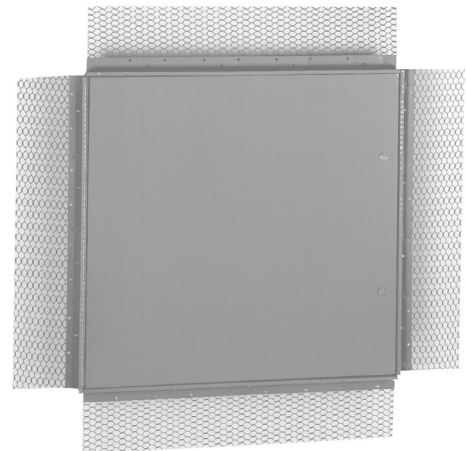
Examples of Optional Colors at Additional Cost - Painted Samples Available



MODEL
TMW



MODEL
TMP



MODEL TME