

GoBoard®

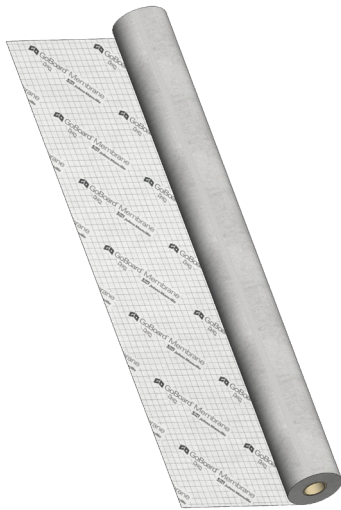
JM **Johns Manville**
A Berkshire Hathaway Company

Installation Instructions

GoBoard® Membrane is compatible with all GoBoard products

GoBoard Membrane is a flexible and light weight waterproofing and crack isolation membrane constructed from a 100 micron polyethylene waterproofing membrane laminated to polypropylene non-woven fabric on both sides. GoBoard Membrane provides an excellent waterproofing substrate for unmodified and modified thin-set mortars used to bond ceramic, porcelain and stone tiles. Use in residential and commercial areas including bathrooms, tubs, showers, laundry rooms, kitchens, backsplashes, balconies, patios and wet areas.

GoBoard Membrane



- Use in interior / exterior residential and commercial applications
- Exceeds ANSI A118.10 requirements for waterproofing membranes
- Rated for residential and commercial steam rooms per ASTM E96, Method E
- ASTM C627 "Extra Heavy" rating
- Install tile same day
- Compatible with unmodified and modified thin-set mortars
- Use on walls with GoBoard Shower Pan Kit
- Use as a topical waterproofing for dryset shower pans with GoBoard on walls
- Compatible with all GoBoard products
- Made in the USA

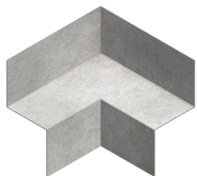


GoBoard Banding

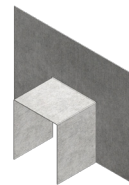


- Use to waterproof GoBoard Membrane, GoBoard, GoBoard Pro, and GoBoard Wedge joints
- 4.9-in wide
- Made in the USA

GoBoard Corner



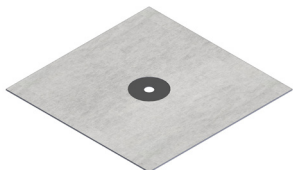
- Use to waterproof inside and outside corners
- Use with all GoBoard products
- Cut with scissors or utility knife to create inside or outside corners



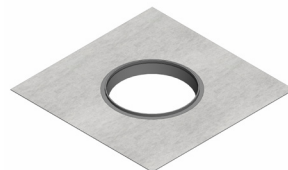
GoBoard Curb Cover

- Use to waterproof GoBoard Curb with GoBoard Membrane, GoBoard or GoBoard Pro on wall
- For use with 2.5-in wide GoBoard Curb

GoBoard Pipe Collar



- 1/2" to 3/4" Pipe
- Use with GoBoard Membrane, GoBoard or GoBoard Pro

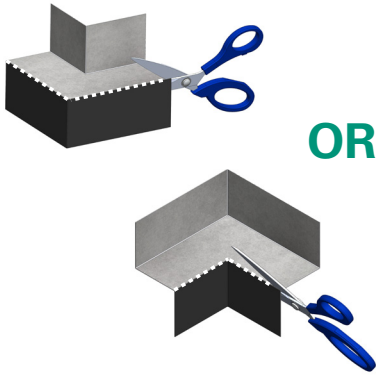


GoBoard Mixing Valve Seal

- 4 1/2-in opening
- Use with GoBoard Membrane, GoBoard or GoBoard Pro

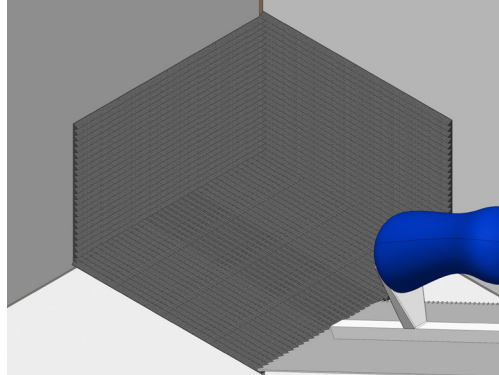
Before installing GoBoard Membrane and accessories, sweep area and clean all surfaces with a wet grout sponge and review the Approved Materials, Limitations and Safety Sections on last page prior to beginning installation.

GoBoard® Corner and Curb Cover



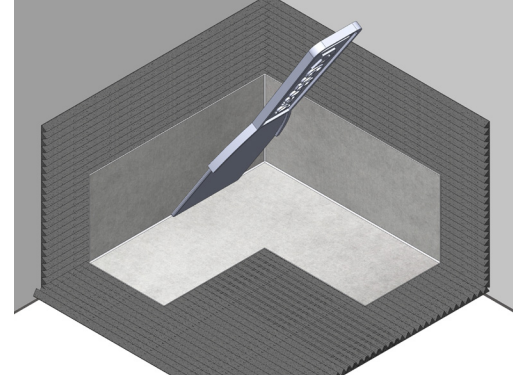
Step 1 - Cut GoBoard Corner

Cut GoBoard Corner with scissors or a utility knife along dotted lines and discard shaded area to create an inside or outside corner.



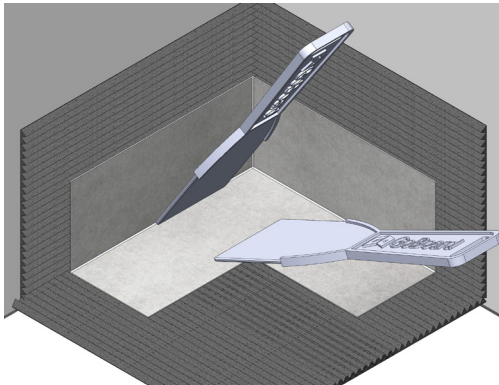
Step 2 - Apply Thin-Set Mortar

Uniformly apply thin-set mortar with a 3/16" x 5/32" v-notch trowel beyond extents of GoBoard Corner on all sides. See Approved Materials for substrates.



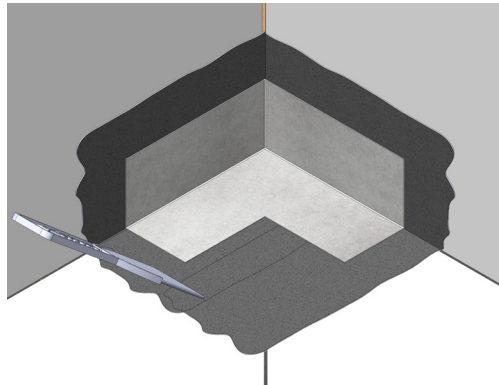
Step 3 - Place Into Position

Loosely place GoBoard Corner (inside corner shown) in position and use putty knife to force edges into corners.



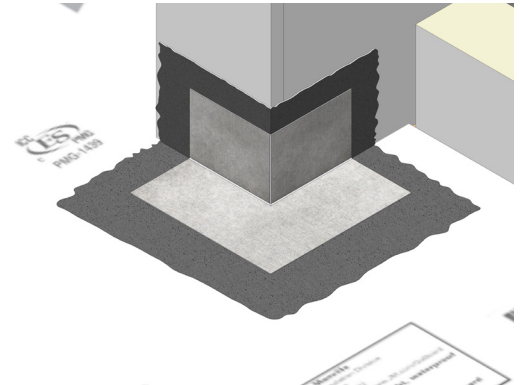
Step 4 - Embed Into Mortar

Embed into thin-set mortar with another putty knife working from corners to edges while holding GoBoard Corner in position with another putty knife.



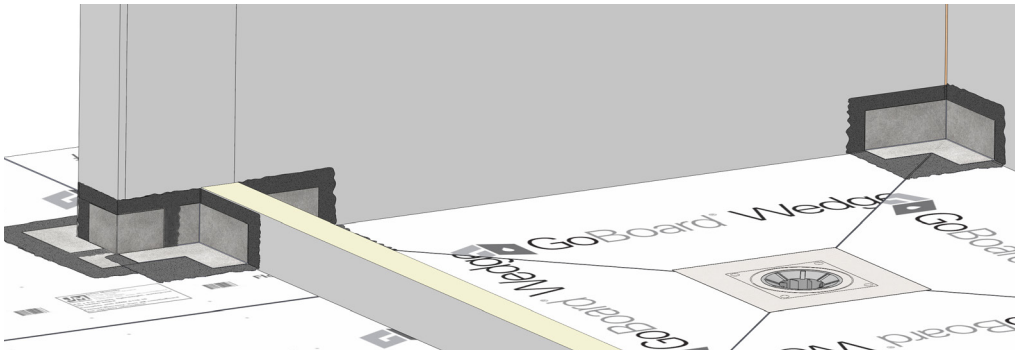
Step 5 - Ensure Full Coverage

Squeeze out excess thin-set mortar and ensure full coverage with no voids or air pockets. Less mortar underneath GoBoard Corner is preferred.¹



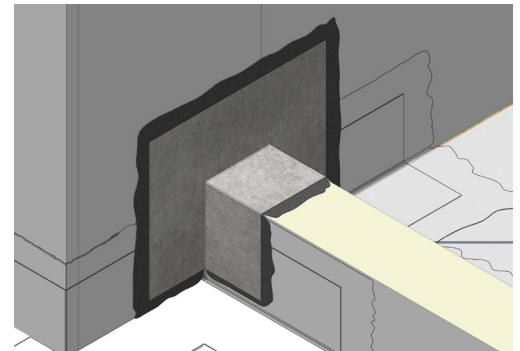
Step 6 - Outside Corner

Follow Steps 2 through 5 to install GoBoard Corner (outside corner shown) and remaining corners. Overlap corners by at least 2 inches as needed.



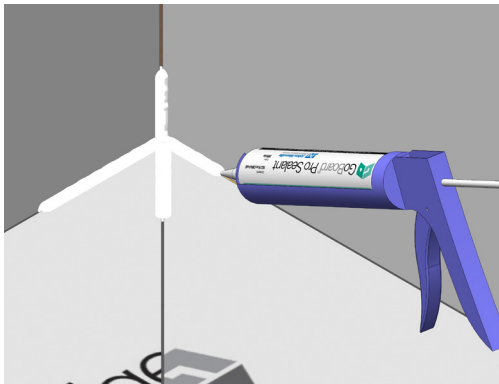
Step 7 - Install Additional Corners as Needed

Follow Steps 2 through 6 installing GoBoard Corner as needed. GoBoard Corner can also be trimmed keeping in mind at least 2 inches of overlap is required for proper waterproofing. GoBoard Corner can be installed over GoBoard Membrane, GoBoard and other substrates listed in the Approved Materials Section.



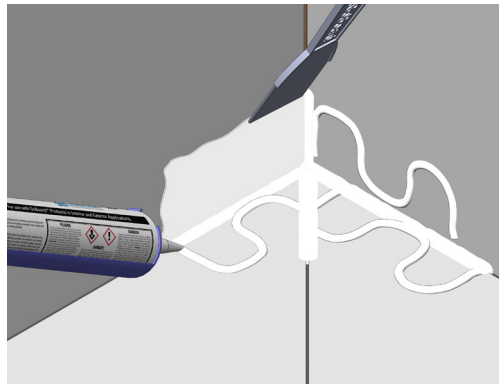
Step 8 - Install GoBoard Curb Cover

Follow Steps 2 through 5 to install GoBoard Curb Cover over GoBoard Curb and trim as needed ensuring at least 2 inches of overlap with corners.

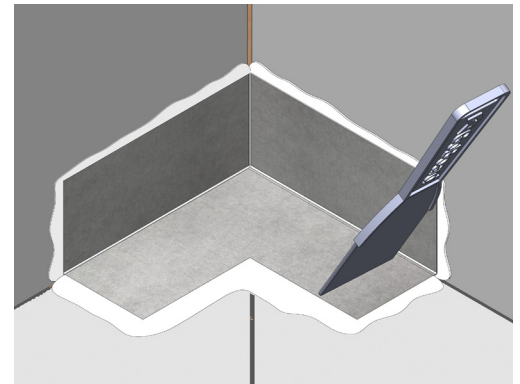


Flood Testing Same Day

Use GoBoard Pro Sealant or GoBoard Sealant in place of thin-set mortar. **1.** Liberally fill joints with sealant within extents of GoBoard Corner.



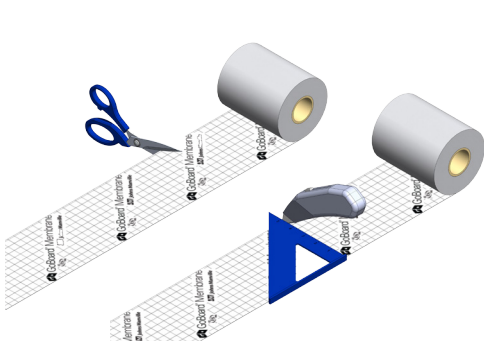
2. Apply 1/4" beads of sealant in a ribbon pattern spaced 1 to 2" apart within extents of GoBoard Corner. **3.** Spread sealant with a putty knife slightly beyond extents of GoBoard Corner while ensuring joints are filled with sealant.



4. Position GoBoard Corner and embed into sealant. **5.** Squeeze out excess sealant with a clean putty knife ensuring full coverage. **6.** Repeat procedure for additional corners and curb cover as needed within area being flood tested.

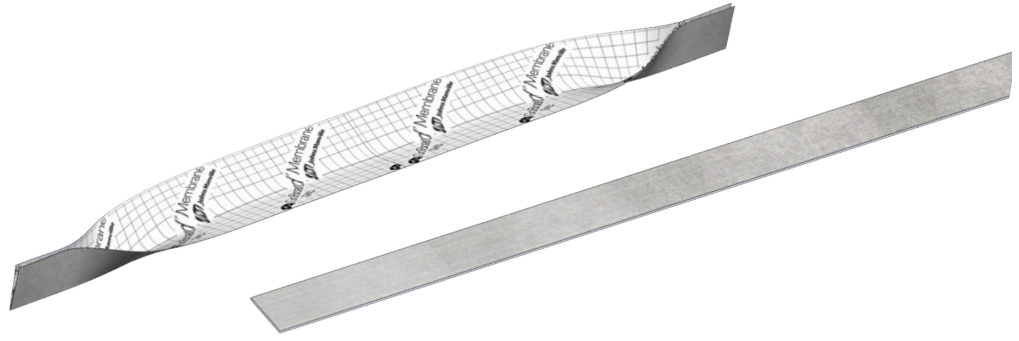
¹ Squeezing out excess mortar helps reduce buildout and enhance waterproofness of joint.

GoBoard® Banding and Membrane



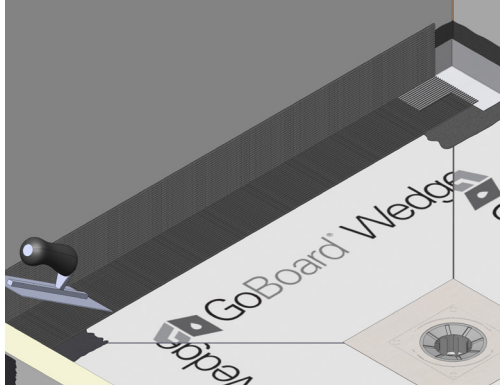
Step 9 - Cut GoBoard Banding

Cut GoBoard Banding to length using scissors or utility knife ensuring at least 2 inches of overlap with GoBoard Corner or other accessories.



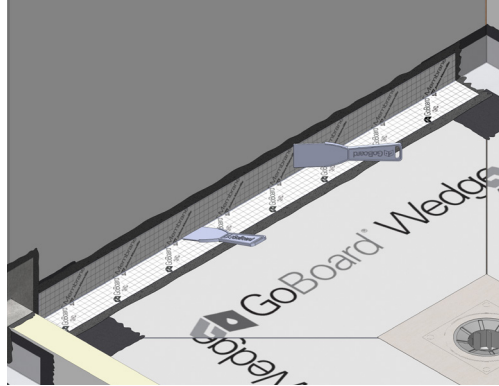
Step 10 - Pre-Fold

For corners, pre-fold at least 3 inches near ends or full length to help guide placement for inside and outside corners. This will help ensure proper width of GoBoard Banding on each side of joint, eliminate gaps at corners and prevent wrinkles.



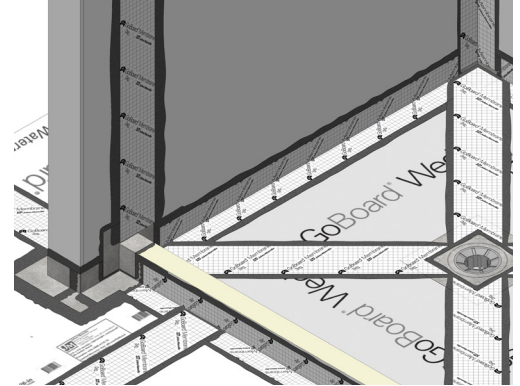
Step 11 - Apply Thin-Set Mortar

Comb thin-set beyond extents of banding using a 3/16-in. x 5/32-in. v-notch trowel. Include at least a 2-in. overlap with accessories and membrane.



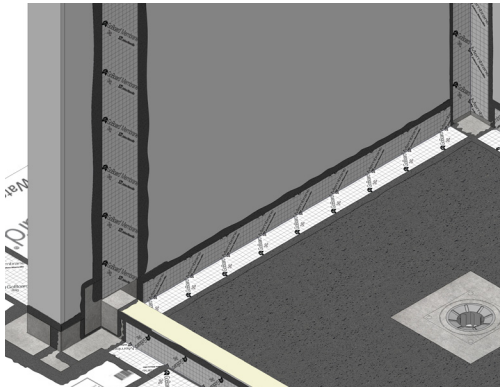
Step 12 - Install GoBoard Banding

Position banding over thin-set ensuring proper placement, especially for inside corners. Using putty knives, embed banding into thin-set to fully adhere.



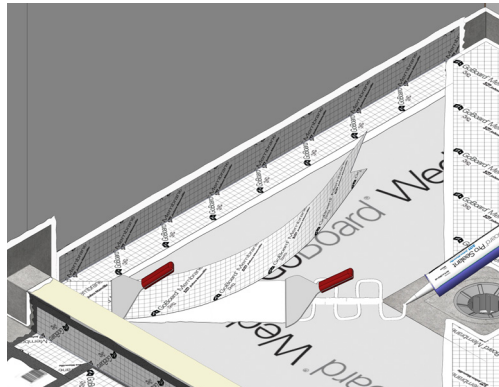
Step 13 - GoBoard Banding

Continue installing banding on all joints, changes of plane and shower pan joints as needed. For banding joints, overlap at least 2 inches.



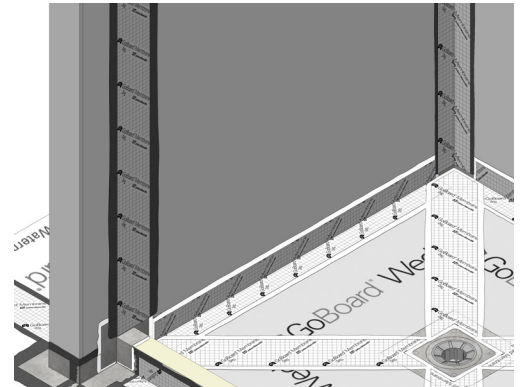
Step 13b - Dry Pack Shower Pan

For dry pack pans using GoBoard Point Drain System, install GoBoard Corner, Curb Cover then Banding around perimeter as shown.



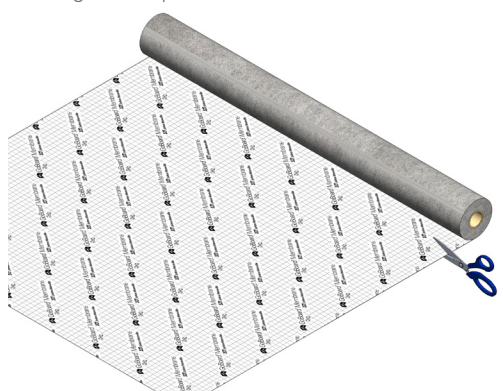
Step 13c - Flood Testing Same Day

See previous steps for flood testing same day. 1. Fill joints with GoBoard Sealant or GoBoard Pro Sealant, 2. Apply 1/4-in beads spaced 1 to 2-in apart within



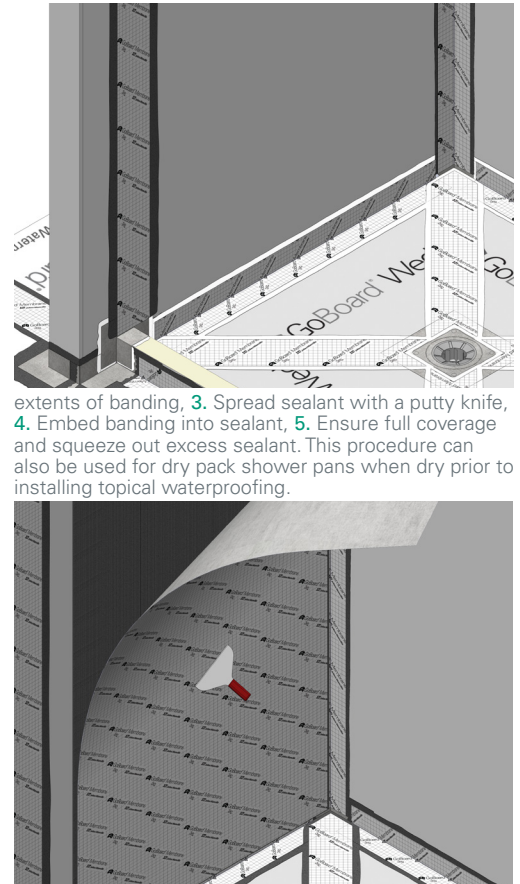
Step 14 - Cut GoBoard Membrane

extents of banding, 3. Spread sealant with a putty knife, 4. Embed banding into sealant, 5. Ensure full coverage and squeeze out excess sealant. This procedure can also be used for dry pack shower pans when dry prior to installing topical waterproofing.



Step 15 - Apply Thin-Set Mortar

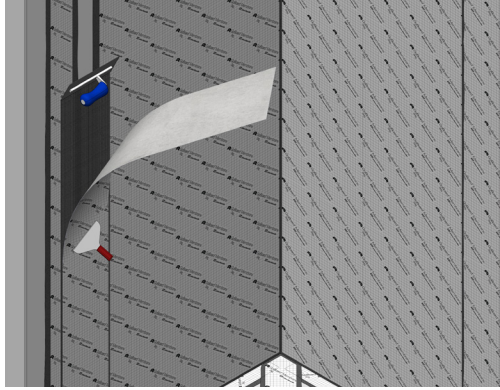
Uniformly apply thin-set mortar with a 3/16-in x 5/32-in v-notch trowel accounting for 2-in overlap with banding, corner, curb cover and membrane.



Step 16 - Install GoBoard Membrane

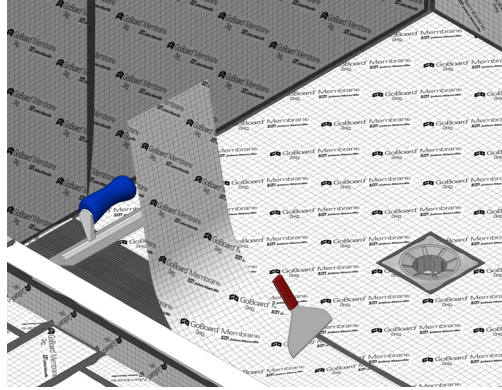
Using a large putty knife with dull edges, concrete finishing trowel or similar, embed membrane into mortar starting from middle working outwards.

GoBoard® Membrane and Accessories



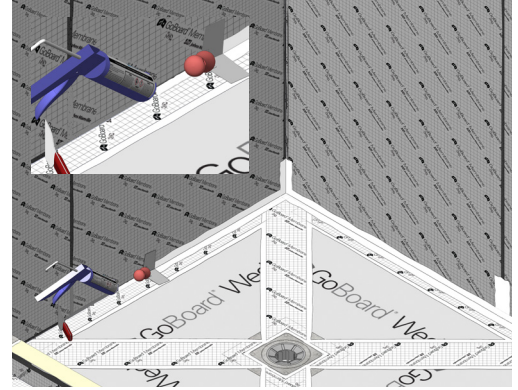
Step 17 - GoBoard Membrane Joints

GoBoard Membrane can overlap itself, GoBoard Banding, GoBoard or GoBoard Pro² (not shown) by a minimum of 2-in to create waterproof joints.



Step 18 - Dry Pack Shower Pan

Refer to Step 13b and install GoBoard Membrane following Steps 14 and 17. Once the dry pack mortar has cured install GoBoard Membrane as shown.

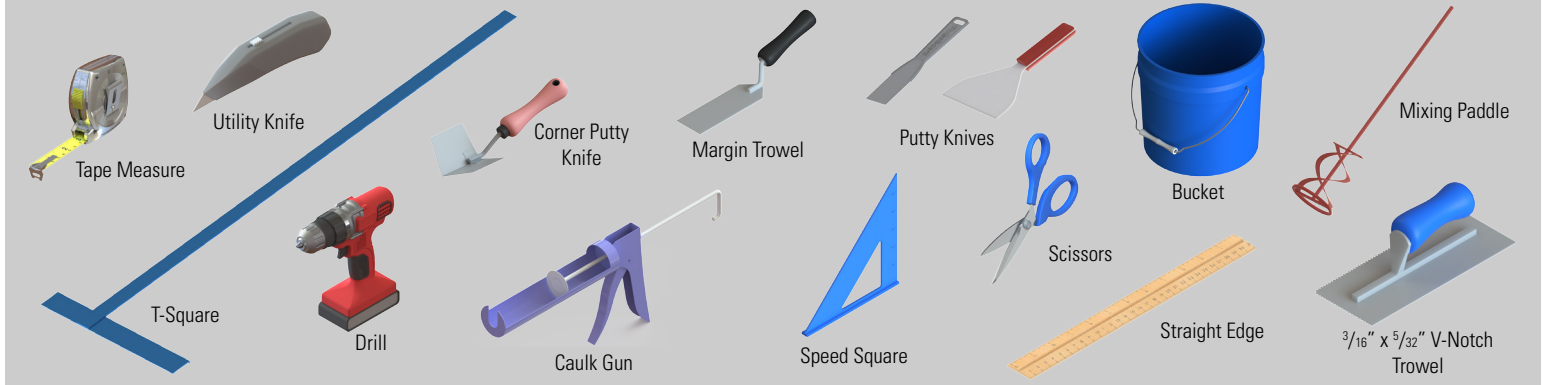


Step 19 - Flood Test Same Day

Refer to Step 13c and install GoBoard Membrane following Steps 14 and 17. Remove all excess thin-set mortar and seal areas shown with sealant³.

² Hybrid system includes GoBoard or GoBoard Pro combined with other substrate types that require waterproofing with GoBoard Membrane. For example, the joint between GoBoard or GoBoard Pro and drywall can be waterproofed by simply extending GoBoard Membrane onto GoBoard by at least 2 inches. ³ Remove excess thin-set mortar in areas being sealed with GoBoard Sealant or GoBoard Pro Sealant. Extend beyond joints by at least 2-in with a film application of at least 1/32-in that completely covers GoBoard Membrane and accessories. All areas being exposed to flood test need to be properly sealed as described. If not flood testing same day, follow thin-set mortar manufacturers instructions regarding when flood test can be performed.

Recommended Tools for Installing GoBoard Membrane, Accessories and GoBoard Tile Backer Board



APPROVED MATERIALS

- **Substrate** – GoBoard products, cement backer board, gypsum wallboard, plaster walls, brick, cement blocks, concrete, mortar beds and exterior grade plywood.
- **Bonding:** Polymer modified thin-set mortar compliant with ANSI A118.4 or dry-set mortar compliant with ANSI A118.1. For GoBoard Corner, Banding and Curb Cover, GoBoard Sealant and GoBoard Pro Sealant can be used in place of thin-set mortar especially when flood testing same day.
- **Joint Sealing:** Overlap GoBoard Membrane minimum 2 inches or butt membrane joints and cover with GoBoard Banding. Use GoBoard Corner for both inside and outside corners and GoBoard Curb Cover for GoBoard Curb.
- **Tools:** Utility knife, scissors, pencil or pen, straight edge, speed square, T-square, measuring tape, 2 to 6 in. flat putty knives wth blunt edges, corner putty knife, 3/16-in x 5/32-in v-notch trowel, margin trowel, caulk gun, corded or cordless drill, thin-set mixing paddle and bucket.

LIMITATIONS

- Non-structural and must be applied over substrates capable of supporting tile and stone installations. Substrate must not exceed L/360 deflection (L/720 for stone) under live loads.
- Do not install over expansion joints or cracks with vertical movement.
- Not intended as a finish surface and must be covered with ceramic, porcelain, or stone tiles. Do not cover with other materials.
- Do not use on substrates NOT listed in Approved Materials Section.
- Not intended for continuously submerged applications.
- Only bond to substrates allowed by thin-set mortar or adhesive manufacturer.

SAFETY & HANDLING

Please wear gloves, safety glasses and long sleeve shirts and pants when installing GoBoard products. and follow good safety practices when installing GoBoard. Temporary mechanical abrasion (itching) of skin, eyes and respiratory tract may occur upon exposure to fibers or dust during handling of GoBoard.

TECHNICAL DATA

Physical Property	Value	Test Method
Thickness, in.	0.022	Internal
Material Weight, oz/y ²	6.9	Internal
Fungus / Mold Resistance	Does not support growth	ANSI A118.10 4.1
Seam Strength, lbf/in. width	26	ANSI A118.10 4.2, ASTM D751
Breaking Strength, psi	>170	ANSI A118.10 4.3, ASTM D751
Dimensional Stability, % change	<0.7	ANSI A118.10 4.4 ASTM D1204
Waterproofness	No water penetration	ANSI A118.10 4.5 ASTM D4068 A2
Shear Strength, psi	>50 all conditions	ANSI A118.10 5.0 ASTM C482
System Performance	Extra Heavy	ANSI A118.10 6.0 ASTM C627
Water Vapor Transmission, perms	0.2	ASTM E96 Method E

¹Values for GoBoard Membrane and GoBoard Banding only.

FOLLOW US!



Learn More:

visit www.JM.com/GoBoard

