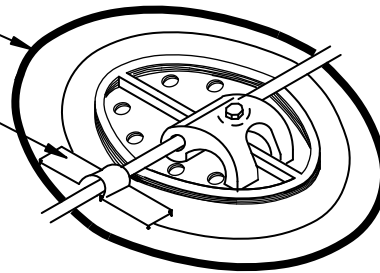


**DETAIL IS NOT GUARANTEEABLE**

JM PVC T-JOINT PATCH  
FULLY WELDED TO MEMBRANE  
2" (50 mm) STRIP OF JM DETAIL  
MEMBRANE STRAP



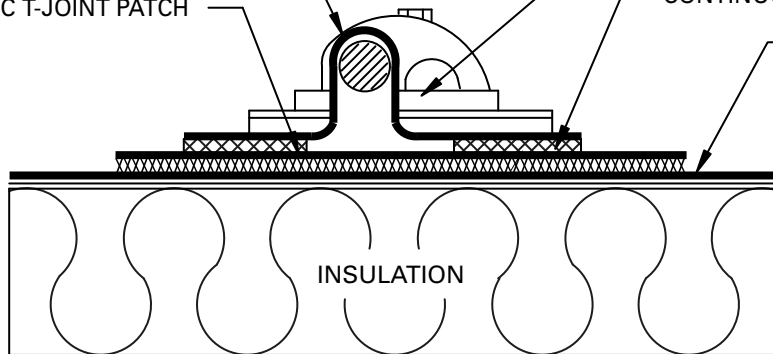
2" (50 mm) STRIP OF JM DETAIL  
MEMBRANE STRAP

JM PVC T-JOINT PATCH

LIGHTNING ROD AND BASE

1½" (40 mm) MINIMUM  
CONTINUOUS WELD

JM PVC MEMBRANE



INSULATION

**NOTE:**

DETAILS TO BE USED IN CONJUNCTION WITH GUIDE SPECIFICATIONS CONTAINING REQUIREMENTS FOR NAILERS, INSULATION, ETC.

DRAWING NO.

**PM-96**

**LIGHTNING CABLE BASE**

SCALE

N.T.S.

ISSUE DATE

3-06

CAD

PV96MEF

