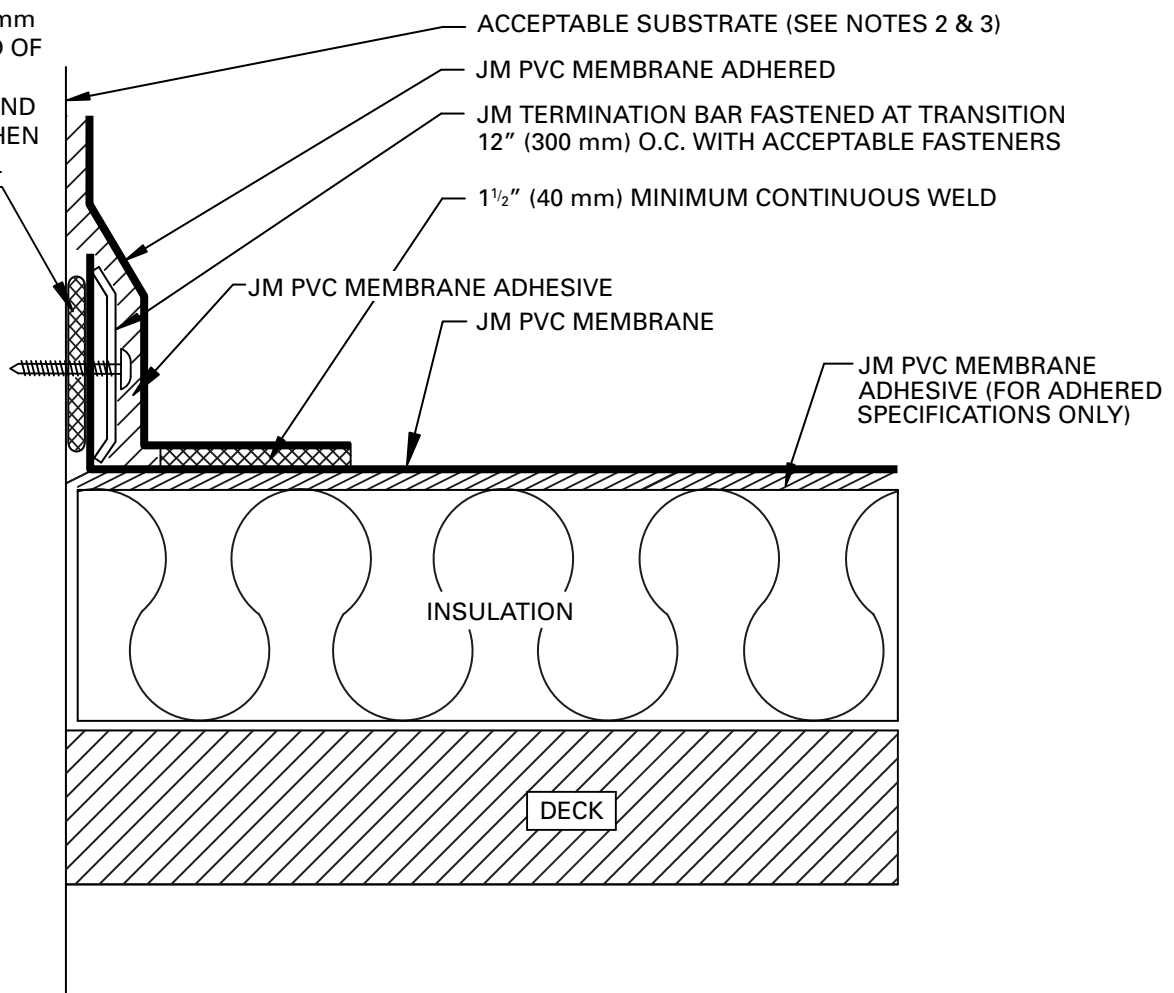



1/4" TO 1/2" (8 mm to 15 mm) BEAD OF CAULKING IS REQUIRED BEHIND MEMBRANE WHEN HIGH INTERNAL PRESSURE IS ANTICIPATED



NOTES:

1. DETAILS TO BE USED IN CONJUNCTION WITH GUIDE SPECIFICATIONS CONTAINING REQUIREMENTS FOR NAILERS, INSULATION, ETC.
2. IN NEW CONSTRUCTION, ACCEPTABLE SUBSTRATES INCLUDE EXTERIOR GRADE PLYWOOD, POURED OR PRECAST CONCRETE, CEMENT BLOCK OR MASONRY WALLS. CONTACT JM TECHNICAL SERVICES FOR OTHER SUBSTRATES.
3. ACCORDING TO PROJECT CONDITIONS, THE SPECIFIER AND/OR APPLICATOR MUST DETERMINE THAT THE VERTICAL SUBSTRATE/STRUCTURE IS ABLE TO RESIST 200 LBS./FT. (298 KGS./METER) MINIMUM IN ALL DIRECTIONS.

DRAWING NO. PB-26A	MEMBRANE FLASHING BASE TIE-IN			
	SCALE N.T.S.	ISSUE DATE 3-06	CAD PVC-26A	