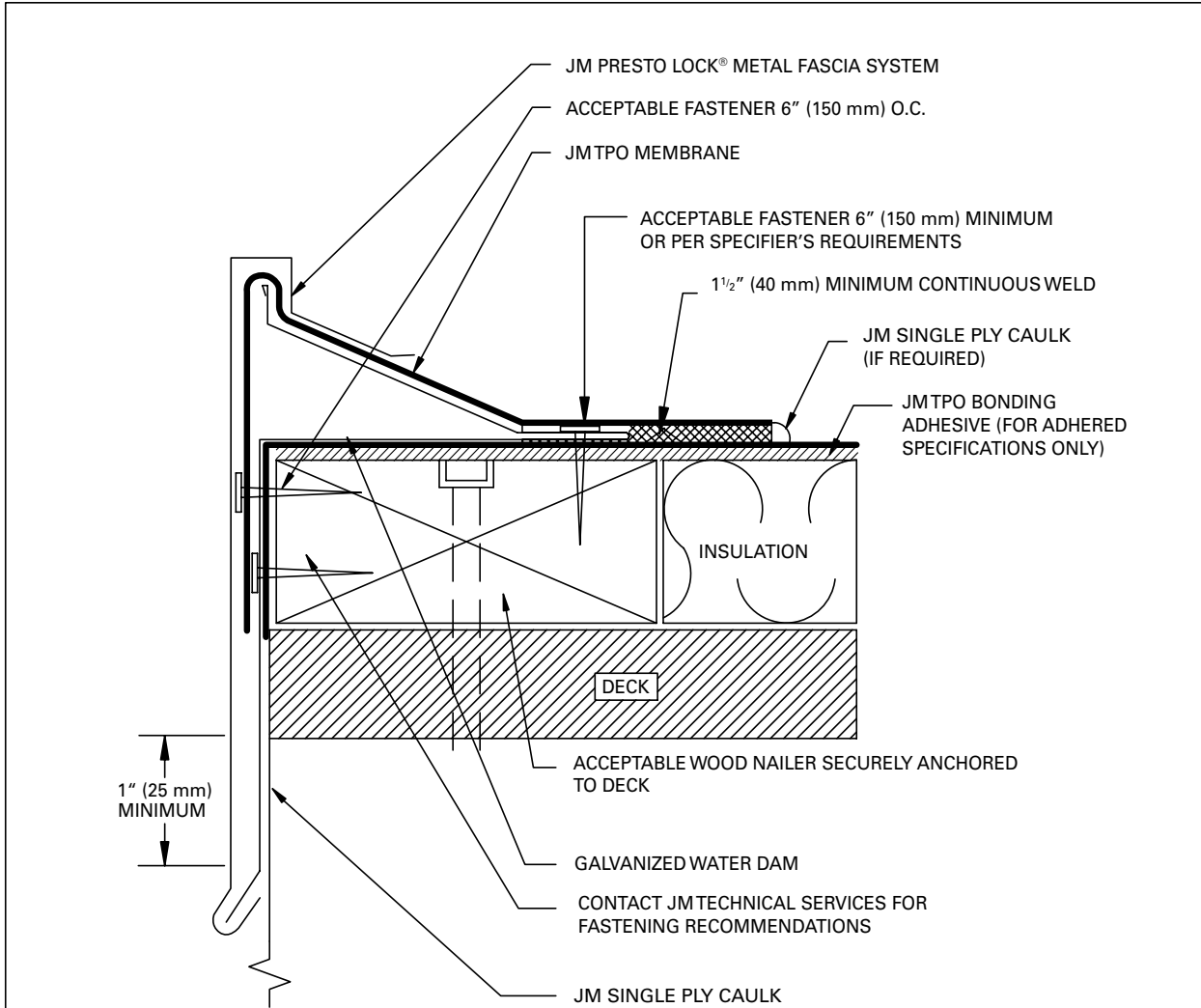



# Mechanically Fastened and Fully Adhered Details



**NOTES:**

1. DETAILS TO BE USED IN CONJUNCTION WITH GUIDE SPECIFICATIONS CONTAINING REQUIREMENTS FOR NAILERS, INSULATION, ETC.
2. JM SINGLE PLY CAULK IS USED TO SEAL THE MEMBRANE EDGES WHERE REINFORCING FABRIC IS CUT AND EXPOSED. EDGE SEALANT IS REQUIRED ON ALL END LAPS, T-JOINTS, AND FIELD CUT EDGES.
3. INSULATION MUST BE COMPATIBLE WITH JM TPO BONDING ADHESIVE.

DRAWING NO. <b>TE-12</b>	<b>JM PRESTO LOCK® METAL FASCIA</b>			
	SCALE N.T.S.	ISSUE DATE 3-06	CAD TPO-2.02	