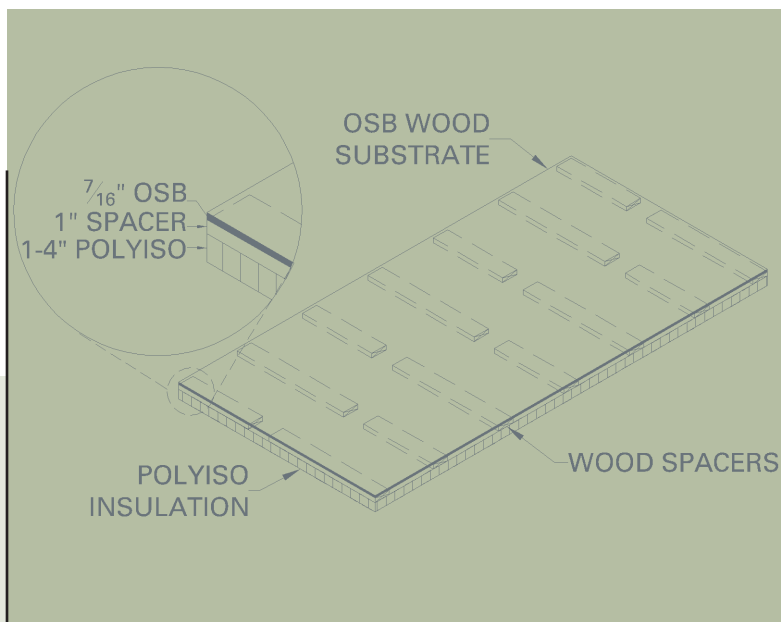


Johns Manville Vented NailBoard™
*Rigid Roof Polyiso Foam Core Insulation with Built-in
Ventilated Air Space*



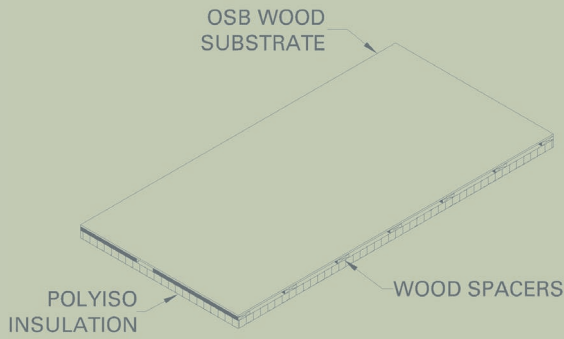
What Matters Most

If combining the features of rigid high thermal foam insulation with a vented, nailable surface that is designed to reduce heat build-up in air space is important to you...then Vented NailBoard is the product of choice.

Vented NailBoard is comprised of a one to four inch layer of polyisocyanurate insulation, one-inch wood spacers, and 7/16" oriented strand board substrate. The spacers allow for airflow between the insulation and the nailable surface to which the shingles are attached. Vented NailBoard has 3,555 cubic inches of vented airspace per board. Many shingle manufacturers require ventilation between the shingles and the insulation. NailBoard can be installed over a variety of structural roof decks; including steel, wood, or concrete. Shingles, shakes, slate, tile or metal roofing are installed over the insulation.

**The advantages of using
Vented NailBoard™**

- Combines the desirable benefits of a nailable surface and insulation with the addition of a venting airspace to help reduce heat build-up
- Excellent for buildings with cathedral ceilings
- Every Vented NailBoard incorporates a seamless sheet of OSB, which eliminates potential splitting of the panel during roof loading or handling
- The OSB incorporated in Vented NailBoard is factory routed 1/8" (3 mm) on all four sides to allow for required spacing of the OSB sheathing while maintaining the integrity of the insulation system
- Complies with EPA requirements and meets Clean Air Act Amendments of 1990
- The polyiso component of NailBoard is manufactured with zero ozone depleting products.



In addition to providing high thermal efficiency, the polyiso portion of Vented NailBoard complies with EPA requirements and meets Clean Air Act Amendments of 1990.

The ARMA technical bulletin 211-RR-94 indicates that heat build-up due to poor ventilation can “reduce the anticipated life of the asphalt shingles.” They recommend a minimum of 3/4” airspace.

The product has also achieved numerous UL ratings.

Uses

- Vented NailBoard is designed for use as an insulation/nailbase substrate for a variety of roofing systems and sidewall applications. Vented NailBoard can be used in new construction, reroofing, and re-siding projects on commercial, industrial and residential buildings.

Vented NailBoard is available in standard 48” x 96” (1.22 m x 2.44 m) panels and in thicknesses of 2.5” (64 mm) to 5.5” (140 mm).

Vented NailBoard supplements the full line of high performance residential insulations that JM has to offer, including NailBoard™ .

To learn more about Vented NailBoard™ and our extensive line of commercial/industrial roofing systems, as well as other residential products, contact our Product Information Center at 800-654-3103 or visit us at www.jm.com.

Johns Manville
Residential Roofing Products

R-values

- Vented NailBoard has insulating (R-values) tested by the LTTR (Long Term Thermal Resistance) method. The reported results are 15 year time-weighted averages.

Thickness (inches)	LTTR R-value*
2.5	6.93
2.75	8.43
3	9.93
3.25	11.53
3.50	13.09
3.75	14.63
4	16.23
4.25	17.84
4.5	19.43
4.75	21.04
5	22.69
5.25	24.33
5.50	25.99

* OSB 0.55 plus Foam LTTR



Roofing Systems
717 17th Street
Denver, CO 80202