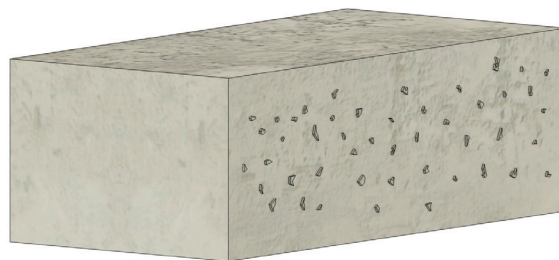




# 320L/336L INSTALL GUIDE

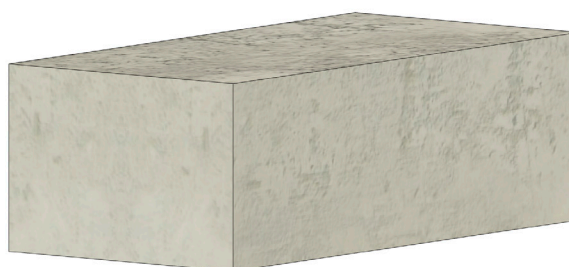
## Step 1

Prepare existing concrete by grinding away any irregularities.



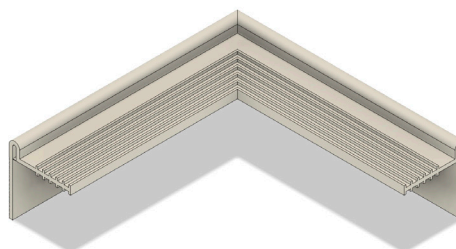
## Step 2

Thoroughly clean existing concrete using a wire brush, high pressure waterblast, or sand blast.



## Step 3

Heat weld waterstop profile to appropriate length and directional changes to fit concrete surface.



#### Step 4

Check heat welded waterstop for proper location, orientation and fit.



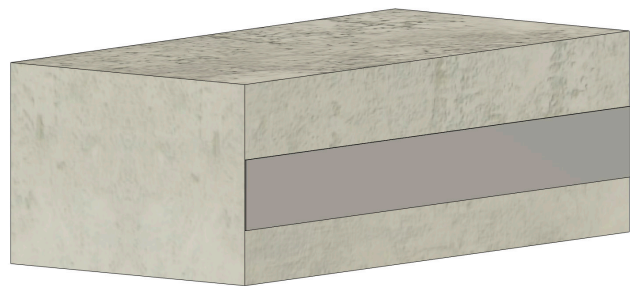
#### Step 5

Mix appropriate amount of epoxy per mixing instructions on epoxy can.



#### Step 6

Place epoxy strip 1/8" thick by 3" wide on concrete surface.



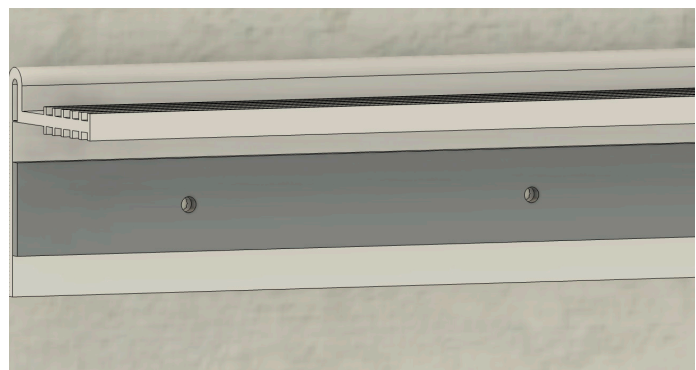
#### Step 7

Embed waterstop into strip of uncured epoxy.



#### Step 8

Using the prepunched stainless steel batten bar as a template, drill 1/4" holes 2-3/4" deep through waterstop and concrete.



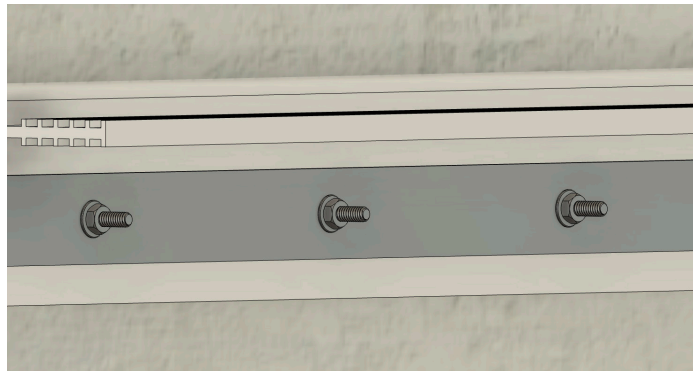
## Step 9

Place stainless steel batten bar against flat leg of waterstop.



## Step 10

Hammer stainless steel wedge anchors into drilled holes, passing anchor through batten bar, waterstop and epoxy gel bed. Repeat for all holes. Tighten anchor bolts.



## Step 11

Allow installed retrofit waterstop system to cure for 24 hours before placing the second pour of concrete.



## Alternative Install Solutions

For expansion joints, install expansion joint filler above and beneath waterstop embedment leg.

