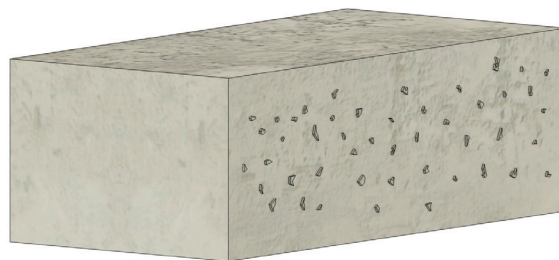




320L/336L INSTALL GUIDE

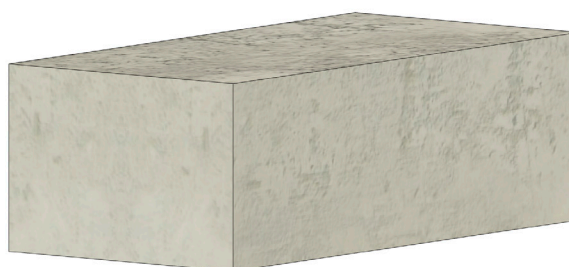
Step 1

Prepare existing concrete by grinding away any irregularities.



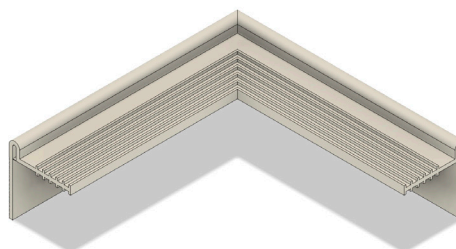
Step 2

Thoroughly clean existing concrete using a wire brush, high pressure waterblast, or sand blast.



Step 3

Heat weld waterstop profile to appropriate length and directional changes to fit concrete surface.



Step 4

Check heat welded waterstop for proper location, orientation and fit.



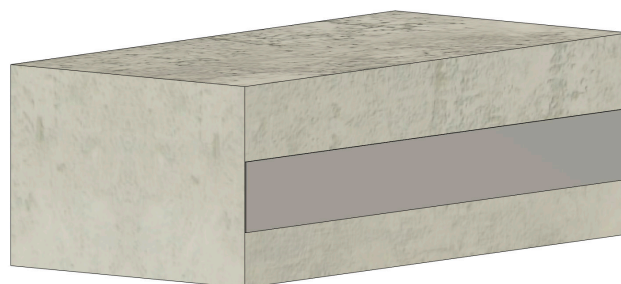
Step 5

Mix appropriate amount of epoxy per mixing instructions on epoxy can.



Step 6

Place epoxy strip 1/8" thick by 3" wide on concrete surface.



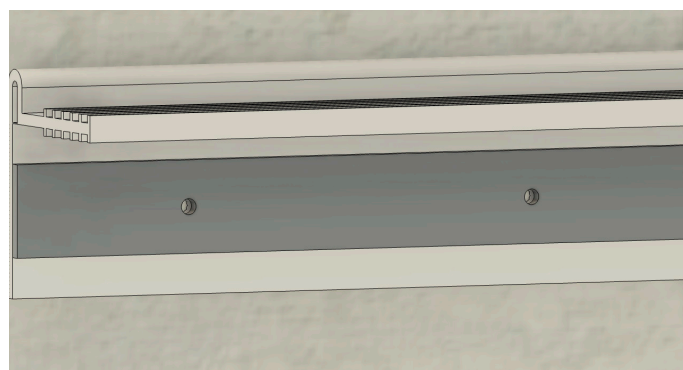
Step 7

Embed waterstop into strip of uncured epoxy.



Step 8

Using the prepunched stainless steel batten bar as a template, drill 1/4" holes 2-3/4" deep through waterstop and concrete.



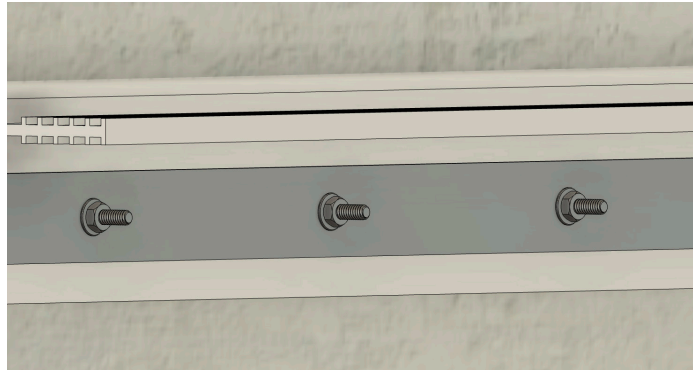
Step 9

Place stainless steel batten bar against flat leg of waterstop.



Step 10

Hammer stainless steel wedge anchors into drilled holes, passing anchor through batten bar, waterstop and epoxy gel bed. Repeat for all holes. Tighten anchor bolts.



Step 11

Allow installed retrofit waterstop system to cure for 24 hours before placing the second pour of concrete.



Alternative Install Solutions

For expansion joints, install expansion joint filler above and beneath waterstop embedment leg.

