



JP540L INSTALL GUIDE

Step 1

Prepare existing concrete by grinding away any irregularities.



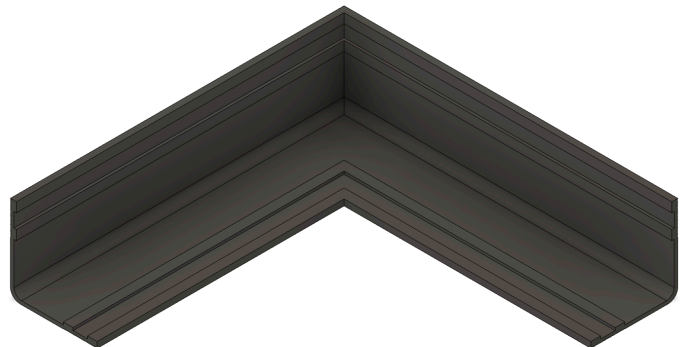
Step 2

Thoroughly clean existing concrete using a wire brush, high pressure waterblast, or sand blast.



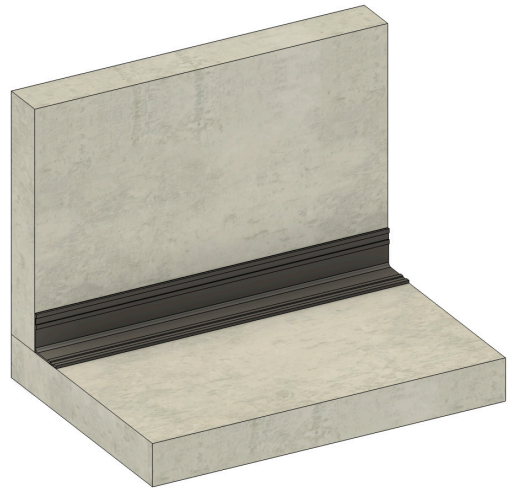
Step 3

Heat weld waterstop profile to appropriate length and all directional changes to fit concrete surface.



Step 4

Check heat welded waterstop for proper location, orientation, and fit.



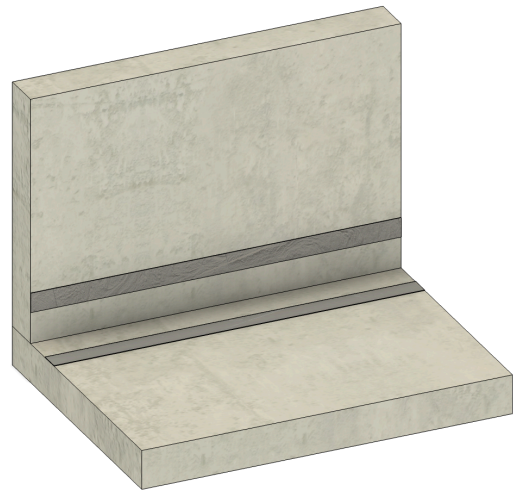
Step 5

Mix appropriate amount of epoxy per mixing instructions on epoxy can.



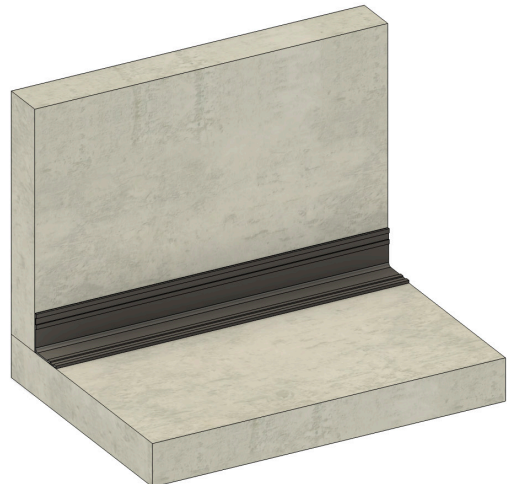
Step 6

Place epoxy strip 1/8" deep by 1-3/4" wide on concrete surface at designated locations. (One strip of epoxy for each combed surface.)



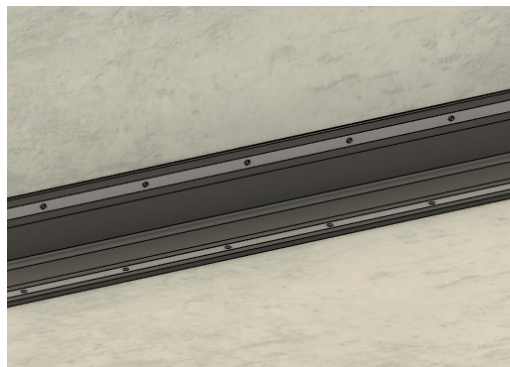
Step 7

Adhere waterstop into strips of uncured epoxy.



Step 8

Place stainless steel batten bar in recesses of retrofit waterstop top and bottom.



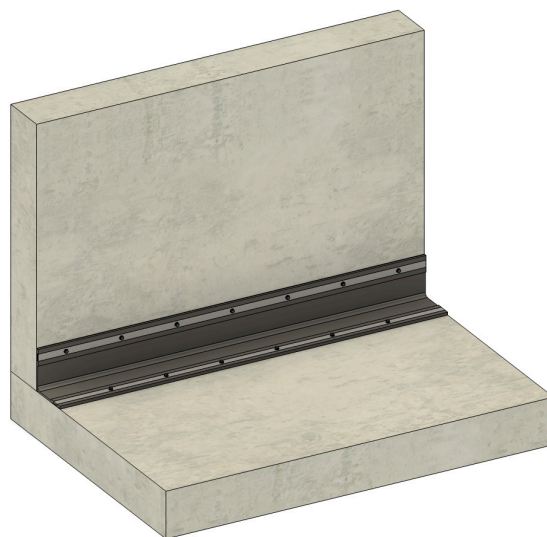
Step 9

Using the prepunched stainless steel batten bar as a template, drill 3/16" holes 2-3/4" deep through waterstop and concrete.



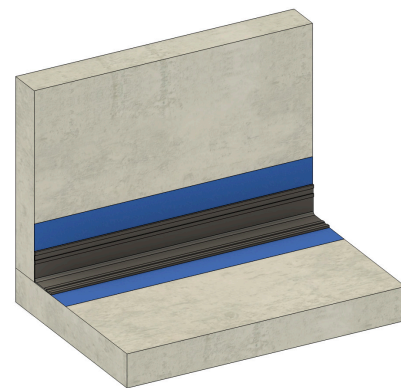
Step 10

Install fasteners through pre-drilled holes in batten bar and waterstop, and tighten as required.



Alternative Install Solutions

1. When installing into drywall, it is preferred to mount fasteners into studs. Otherwise, drywall anchors may be needed.
2. If aesthetics are important to client's application, use painter's tape above and below the waterstop before installing the epoxy.



For welding, fabrication, placement, execution, and quality assurance please follow all procedures stated in Earth Shield Master Specification Section 03250.