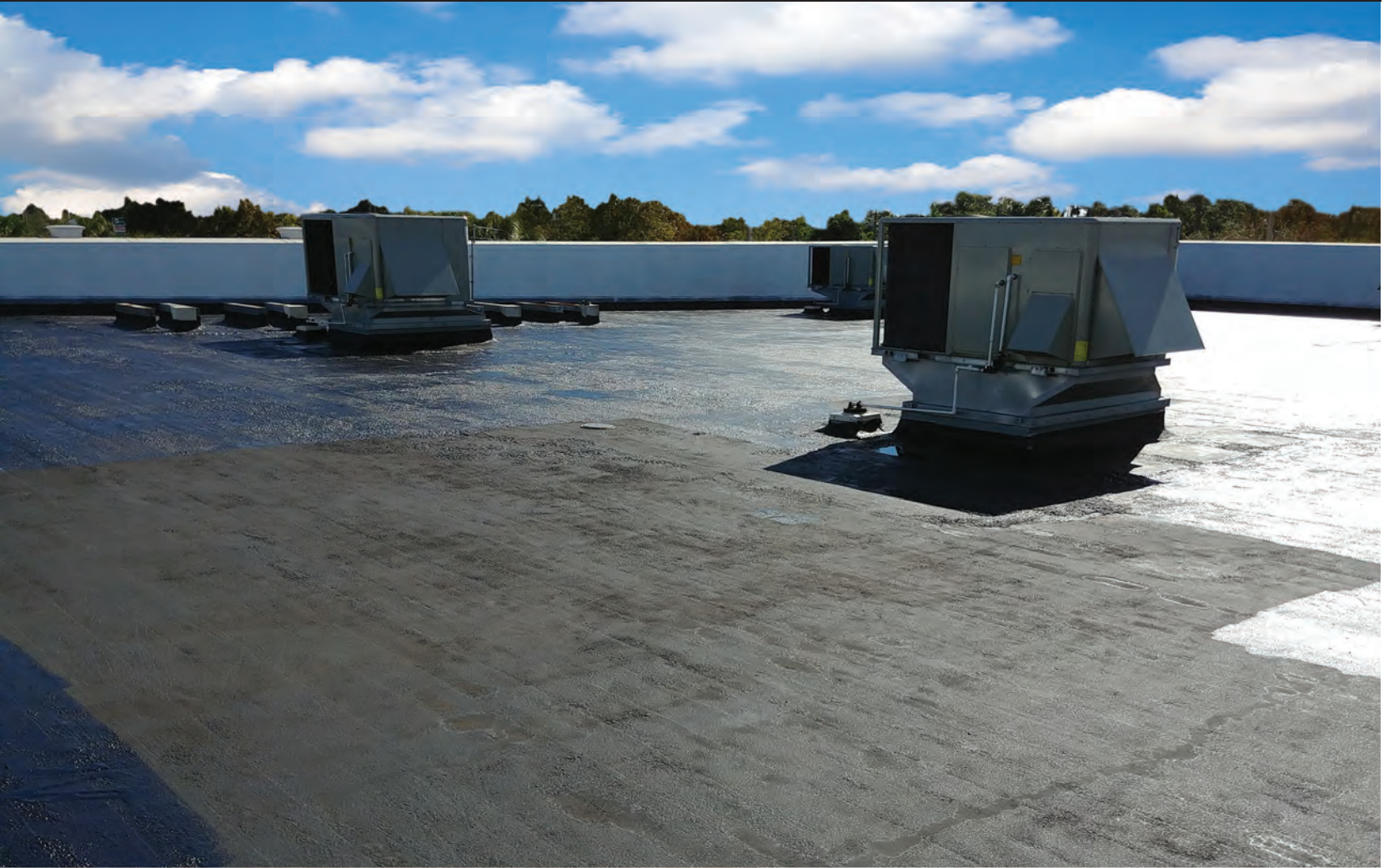




229AR Elastomeric

Rubberized Asphalt Mastic and Coating



Scan to view our video
"How to Apply Rubberized Roof
Coating on Flat Roofs"

www.karnakcorp.com

229AR Elastomeric

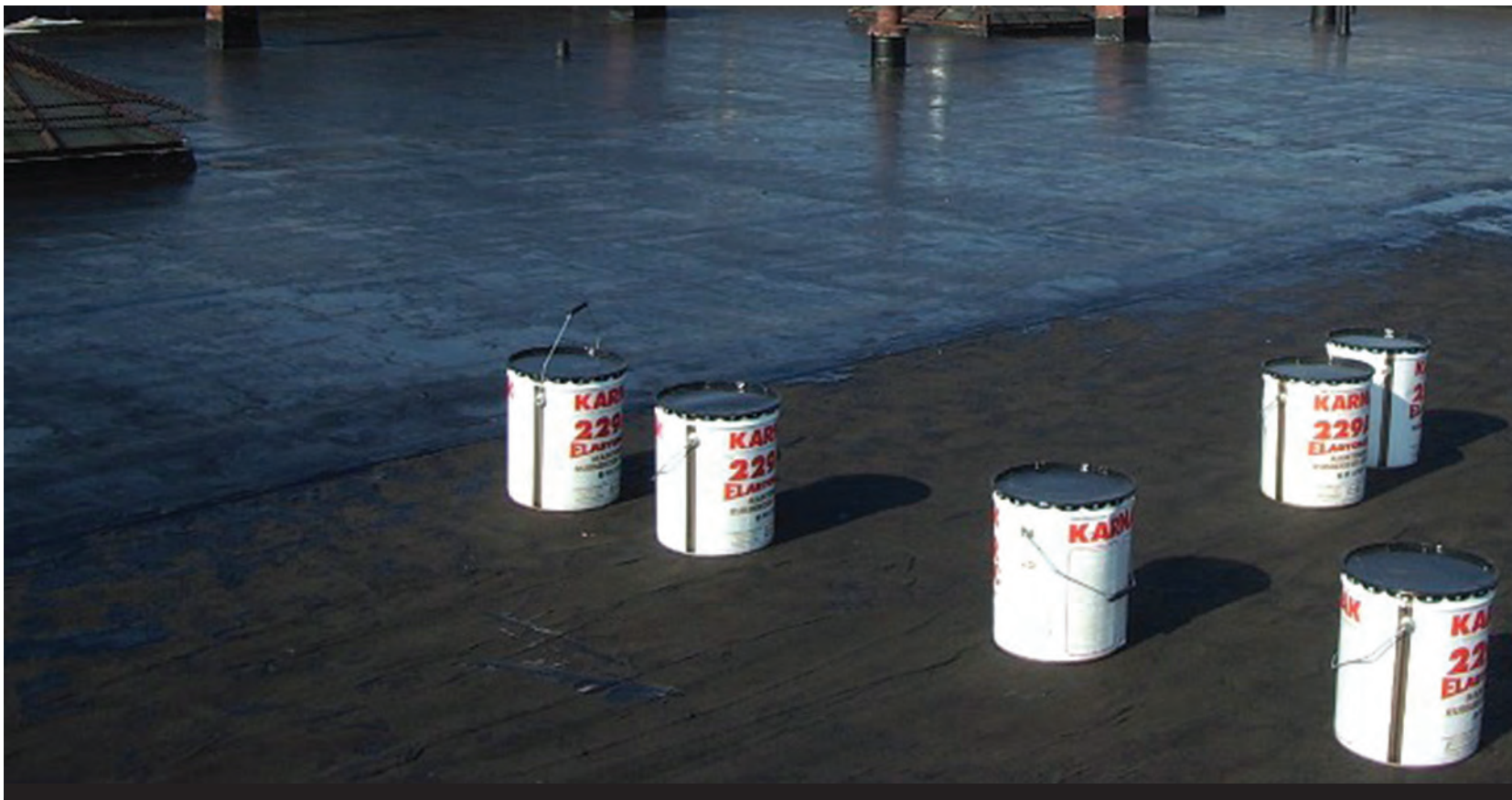
Rubberized Asphalt Mastic and Coating

Advantages

- Cures to a durable, elastic modified bitumen membrane
- Self-leveling brush grade
- Sag-resistant trowel grade
- Excellent water resistance
- One component-trowel grade requires no mixing; brush grade requires minimal mixing
- 700% Elongation: Brush
- 500% Elongation: Trowel

Uses

- Seals modified bitumen seams and splits, seams and fasteners on metal roofs, pitch pans, roof penetrations, blisters and masonry surfaces
- Lines gutters and ponding areas
- Protects and restores modified bitumen and BUR roofs



229AR Elastomeric

Rubberized Asphalt Mastic and Coating



Problem

Existing granulated modified bitumen cap sheet losing granules and starting to deteriorate in the valley.

Solution

Apply 229AR Elastomeric Brush Grade at a rate of 3-4 gallons per 100 sq. ft.

Benefits

229AR Elastomeric Brush Grade has excellent adhesion and cures to a waterproof membrane adding protection and years to the service life of the modified bitumen membrane. After sufficient curing time the 229AR Elastomeric Brush Grade may be coated with a variety of KARNAK reflective coatings as an option. Sufficient curing time will depend on coverage rate and climatic conditions, including temperature and humidity.

229AR Elastomeric

Rubberized Asphalt Mastic and Coating

Problem

Base flashing seams coming apart.

Solution

229AR Elastomeric Trowel Grade applied to entire base flashing and reinforced in a 3-course repair application with 5540 Resat Mat.

Benefits

229AR Elastomeric Trowel Grade has excellent adhesion to modified bitumen base flashings. A 3-course repair application with 229AR Elastomeric Trowel Grade provides a seamless waterproofing restoration that will add years to the service life of the base flashing.

Problem

Existing smooth BUR or modified bitumen with critical ponding water between the drains will cause premature failure of the roof in that area.

Solution

Apply 229AR Elastomeric Brush Grade at a rate of 3-4 gallons per 100 sq. ft.

Benefits

229AR Elastomeric Brush Grade has excellent adhesion to smooth BUR/Modified bitumen and cures to a waterproof membrane adding protection against the ponding condition and years to the service life of the system in those critical areas.



Before



After

229AR Elastomeric

Rubberized Asphalt Mastic and Coating



Problem

Modified Bitumen seam separating, causing leaks.

Solution

Apply 229AR Elastomeric Brush or Trowel Grades in a 3-course repair application to length of seam or affected area with 5540 Resat Mat as reinforcement.

Benefits

229AR Elastomeric has excellent adhesion to modified bitumen membranes and cures to a waterproof membrane providing a superior long-term seam repair. Granules may be broadcast into 229AR Elastomeric just after application. 229AR Elastomeric may also be coated over with reflective coating, as an option.

Problem

Gutters are starting to rust and have leaking seams.

Solution

Apply 229AR Elastomeric Trowel Grade to the interior of the gutter using 5540 Resat Mat as reinforcement at any seams.

Benefits

229AR Elastomeric Trowel Grade will economically waterproof and rustproof the interior of the gutter avoiding costly metal replacement.

229AR Elastomeric

Rubberized Asphalt Mastic and Coating



Problem

Existing aged built-up asphalt roof starting to crack.

Solution

Apply 229AR Elastomeric Brush Grade in two applications for a total rate of 4-6 gallons per square with a one ply application of 3036 Poly Mat polyester reinforcing fabric on the entire roof. After sufficient curing time the 229AR Elastomeric Brush Grade may be coated with a variety of KARNAK reflective coatings as an option.

Benefits

229AR Elastomeric Brush Grade when used as a complete restoration coating provides a waterproofing layer of reinforced SBS modified bitumen that will add many years to the service life of aged built up roofing membranes.

Problem

Large blisters on modified bitumen membrane.

Solution

Cut blister, after allowed to dry, then apply 229AR Elastomeric Trowel Grade in a 3-course repair application with 5540 Resat Mat.

Benefits

229AR Elastomeric Trowel Grade has excellent adhesion to modified bitumen membranes and cures to pure waterproofing providing a superior long-term repair. Granules may be broadcast into the 229AR Elastomeric Trowel Grade at application or after sufficient curing time, it may be coated with a variety of KARNAK reflective coatings as an option.

229AR Elastomeric

Rubberized Asphalt Mastic and Coating



Problem

Pitch pan filler was old and cracked and flange flashing was separating, causing leaks.

Solution

Apply 229AR Elastomeric Trowel Grade as a monolithic flashing 3-course repair application with 5540 Resat Mat to reinforce at the metal flange laps and transitions.

Benefits

229AR Elastomeric Trowel Grade provides a simple and economical seamless repair that will add years to the service life of the pitch pan and flashing.

Other problem solving uses of 229 AR Elastomeric include:

- Repair and restoration of gravel surfaced CoalTar or Asphalt built up roofing
- Coating for a complete granule restoration on modified bitumen cap sheets
- Sealing and coating transite panels
- Waterproofing masonry surfaces above and below grade
- Repairing sprayed in place foam
- Rustproofing/Corrosion-proofing on exposed metal

Compatible Reflective Coatings
298 Alumin-R ENERGY STAR®

Compatible Reinforcing Fabrics
5540 Resat-Mat
3036 Poly-Mat



229AR Elastomeric

Rubberized Asphalt Mastic and Coating



Available in
30-oz. caulk tube
1-gallon
3-gallon
5-gallon

KARNAK
THE SEAL OF QUALITY

330 Central Avenue
Clark, NJ 07066
(800) 526-4236
info@karnakcorp.com
www.karnakcorp.com

Manufacturing/Warehouse Locations:
Clark, NJ
Ft. Lauderdale, FL
Broadview, IL
Kingman, AZ

Distribution Warehouse Locations:
Renton, WA
Rancho Cucamonga, CA
Dallas, TX

