

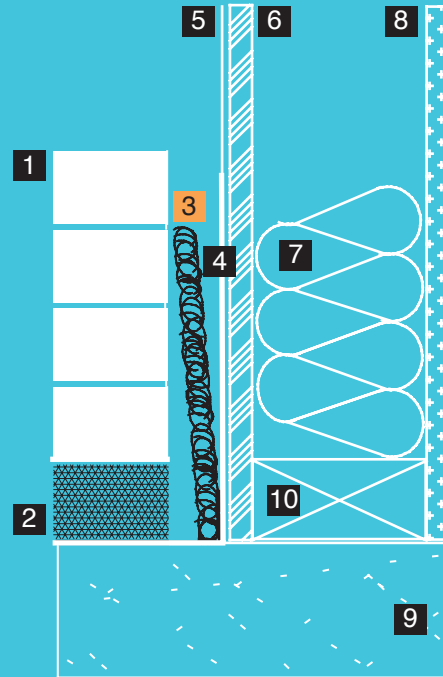


**Driwall™ Mortar Deflection Products**  
 Cavity Wall Protection Devices for  
 Masonry

For use at the base of the wall and where flashing is installed to keep the airspace clear of mortar and debris.

Mortar deflection will allow the weep holes to stay open and drain properly.

For commercial and residential construction. Mortar Deflection does not absorb water, and helps prevent mold.



- 1 Brick
- 2 Driwall™ Weep Vent
- 3 Driwall™ Mortar Deflection
- 4 Flashing
- 5 Weather-resistant barrier (WRB)
- 6 Outer sheathing
- 7 Insulation
- 8 Gypsum wall board
- 9 Concrete foundation
- 10 Base plate

✓ Mortar Deflection does not absorb water and helps prevent mold

**Benefits**

- ✓ Prevents callbacks from moisture problems
- ✓ Cavity drainage and protection of flashing in one product
- ✓ Guaranteed to stop moisture from clogging weep holes when properly installed
- ✓ Will not grow mold; prevents fungus and mildew



*Driwall™ Mortar Deflection is 0.375-1.60 inches thick (9-41mm), sold in 25-50 ft. rolls, and packaged in boxes of four rolls*

*Photo: one roll of Driwall™ Mortar Deflection 2.0-160*





## Driwall™ Mortar Deflection Products

The Keystone™ Cut

Product	Thickness	Length	Area	Roll Dimension	Roll Weight	Packaged
<b>Driwall Mortar Deflection 0.5-040</b>	0.375 in./9.0 mm	50 ft.	200 Ln. ft.	20x20x10 in.	4 lbs.	4 rolls a bag 16 lbs.
<b>Driwall Mortar Deflection 1.0-075</b>	0.80 in./20.0 mm	50 ft.	200 Ln. ft.	21x21x10 in.	2.6 lbs.	4 rolls a box 10.4 lbs.
<b>Driwall Mortar Deflection 2.0-160</b>	1.60 in./41.0 mm	25 ft.	100 Ln. ft.	19x19x10 in.	1.8 lbs.	4 rolls a box 7.2 lbs.

For a complete list of all our products, please contact KBP, or visit our website at [www.KeeneBuilding.com](http://www.KeeneBuilding.com)

### Installation Instructions for Driwall™ Mortar Deflection in Masonry

#### Straight Strip Mortar Deflection

##### ✓ Inspection of Membrane and Wall Conditions

Ensure that the wall is free from structural defects, that any membranes or flashing are properly installed, and that the final system will have a path for moisture to escape from the wall.

#### Installation of Driwall™ Mortar Deflection

Driwall™ Mortar Deflection can be installed by simply placing a continuous strip in the cavity at all flashing locations. Place horizontally on top of the flashing to ensure that the mortar droppings are broken up and deflected away from the weep holes. Mechanical attachment is not required.



P.O. Box 241353

Mayfield Heights, OH 44124

Info@KeeneBuilding.com

[www.KeeneBuilding.com](http://www.KeeneBuilding.com)

877 | 514 | 5336

P 440 | 605 | 1020

F 440 | 605 | 1120