



## Driwall™ Rainscreen Products

**Driwall™ Rainscreen is a drainage mat for exterior wall systems.** The entangled net product eliminates incidental moisture problems in most exterior veneer applications, including stucco, manufactured stone, and plank siding.

With the increase in building “tightness” for thermal protection, moisture problems are on the rise, causing a greater need for hydrostatic pressure release and a ventilation method.

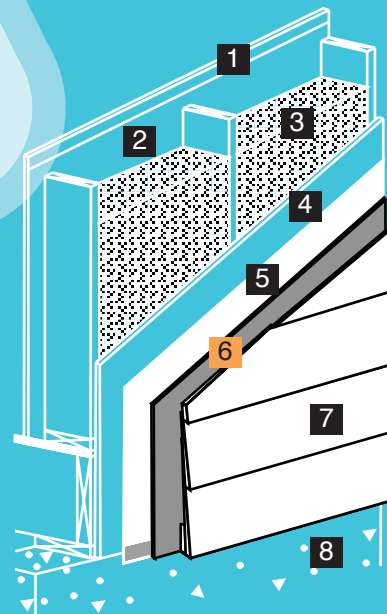
The full-wall Driwall™ Rainscreen product rolls over the water-resistive barrier to separate it from the exterior veneer. The airspace that Driwall™ Rainscreen creates increases airflow through the wall cavity, allowing the wall to breathe and stay dry.

### Benefits

- ✓ **Driwall Rainscreen products PASS multiple wall assemblies that require NFPA 285**
- ✓ **Prevents callbacks from moisture problems**
- ✓ **Increases ventilation**
- ✓ **Helps prevent mold**
- ✓ **Most effective way to drain and vent**
- ✓ **One product that can do it all**



The end result: a dry, mold-free wall system from Keene!

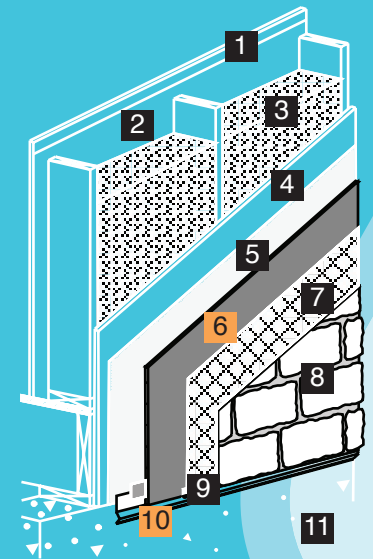


Lapped Siding

- 1 Interior Wallboard
- 2 Vapor Barrier (if required)
- 3 Insulation
- 4 Framing & Exterior Sheathing
- 5 Water-resistive barrier (WRB)
- 6 Driwall™ Rainscreen
- 7 Lapped Siding
- 8 Concrete Foundation

Thin Stone

- 1 Interior Wallboard
- 2 Vapor Barrier (if required)
- 3 Insulation
- 4 Framing & Exterior Sheathing
- 5 Water-resistive barrier (WRB)
- 6 Driwall™ Rainscreen
- 7 Code Compliant Lath
- 8 Thin Stone
- 9 Casing Bead (optional)
- 10 Driwall™ Weep Screenshot
- 11 Concrete Foundation





## Driwall™ Rainscreen Products

Product	Thickness	Length	Area	Roll Dimension	Roll Weight	Applications
<b>Driwall Rainscreen 013-1</b>	0.13 in./3.8 mm	100 ft.	400 sq. ft.	16x16x48 in.	35.0 lbs.	See below
<b>Driwall Rainscreen 020-1</b>	0.25 in./6.0 mm	65 ft.	260 sq. ft.	16x16x48 in.	19.5 lbs.	See below
<b>Driwall Rainscreen 10 mm</b>	0.40 in./10.9 mm	45 ft.	180 sq. ft.	16x16x48 in.	24 lbs.	See below
<b>Driwall Rainscreen 075-1</b>	0.75 in./19.0 mm	50 ft.	200 sq. ft.	18x18x48 in.	29 lbs.	Brick and natural stone
<b>Driwall Rainscreen UV</b>	0.40 in./10.2 mm	45 ft.	180 sq. ft.	16x16x48 in.	24 lbs	Fiber cement, wood siding, open joint cladding, metal panels

For a complete list of all our products, please contact KBP, or visit our website at [KeeneBuilding.com](http://KeeneBuilding.com)

### Applications

- ✓ Stucco
- ✓ Thin stone or brick
- ✓ Manufactured stone
- ✓ Stone and brick masonry
- ✓ Lap siding
- ✓ Siding applications



### Eliminate One Layer of Building Paper

- ✓ **IRC 2006 Code Book\***
- ✓ **R703.6.3 Water-resistant barriers.**  
Water-resistant barriers shall be installed as required in Section R703.2 and, where applied over wood-based sheathing, shall include a water-resistant, vapor-permeable barrier with a performance at least equivalent to two layers of Grade D paper.
- ✓ **Exception:** Where the water-resistant barrier that is applied over wood-based sheathing has a water resistance equal to or greater than that of 60 minute Grade D paper and is separated from the stucco by an intervening, substantially non water-absorbing layer or designed drainage space.



877 | 514 | 5336  
 Info@KeeneBuilding.com P 440 | 605 | 1020  
 KeeneBuilding.com F 440 | 605 | 1120