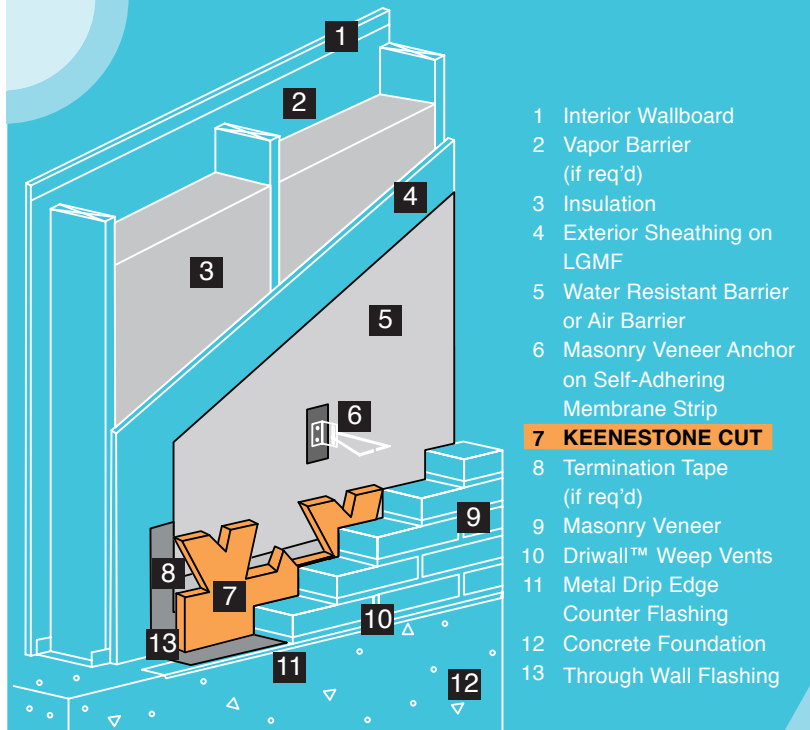




KEENESTONE® CUT Products

KEENESTONE CUT products are designed to catch and hold mortar droppings while allowing moisture to pass through and drain out of the wall. The product suspends mortar droppings above the weep holes to prevent the drainage channels from becoming blocked or clogged.

It is made from nylon and is designed to be 10.0-inches (25.4 cm) high with 7.0-inch (17.8 cm) KeeneStone cuts. It is 95% open to provide optimal drainage and ventilation to dry out the wall system.



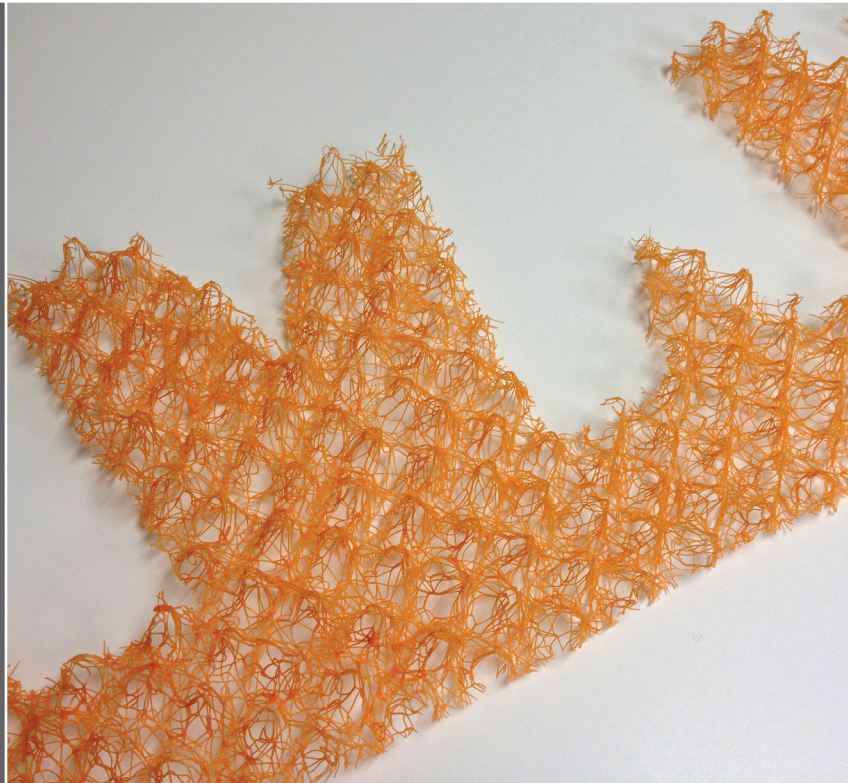
- ✓ For commercial and residential construction
- ✓ KEENESTONE CUT does not absorb water and helps prevent mold

Benefits

- ✓ Guaranteed to stop moisture from clogging weep holes when properly installed
- ✓ Simple installation with no mechanical fasteners required
- ✓ Will not grow mold; prevents fungus and mildew
- ✓ Perfect width to suspend mortar droppings above weep holes, but below flashing connection to the interior wall



0.4-2.0-inches thick (11-50 mm), & packaged in boxes: 100 pieces for 1/2-inch, 50 pieces for 1-Inch & 30 pieces for 2-Inch





KEENESTONE CUT

Product	Thickness	Length (1 piece)	Pieces Per Box	Box Dimension
KEENESTONE CUT 1/2"	0.4 in./11 mm	4.0 ft./ 1.2 m	100 pieces per box	14 x 24 x 49 ft
KEENESTONE CUT 1"	1.0 in./25 mm	4.0 ft./ 1.2 m	50 pieces per box	14 x 24 x 49 ft
KEENESTONE CUT 2"	2.0 in./50 mm	4.0 ft./ 1.2 m	30 pieces per box	14 x 24 x 49 ft

For a complete list of all our products, please contact KBP, or visit our website at KeeneBuilding.com

Installation Instructions for KEENESTONE CUT in Masonry

✓ Inspection of Membrane and Wall Conditions

Ensure that the wall is free from structural defects, that any membranes, flashing and/or insulation are properly installed, and that the final system will have a path for moisture to escape from the wall.

Installation of KEENESTONE CUT

KEENESTONE CUT can be installed by simply placing a continuous strip in the cavity at all flashing locations.

Place horizontally on top of the flashing with the KEENESTONE CUTS pointing upwards to ensure that the mortar droppings are broken up and deflected away from the weep holes.

Mechanical attachment is not required.



877 | 514 | 5336
Info@KeeneBuilding.com P 440 | 605 | 1020
KeeneBuilding.com F 440 | 605 | 1120