

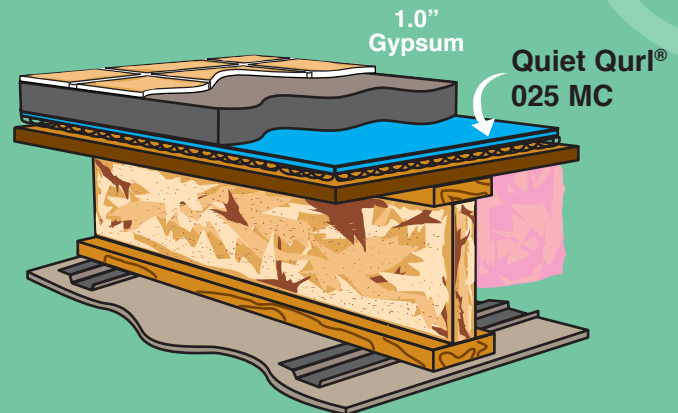
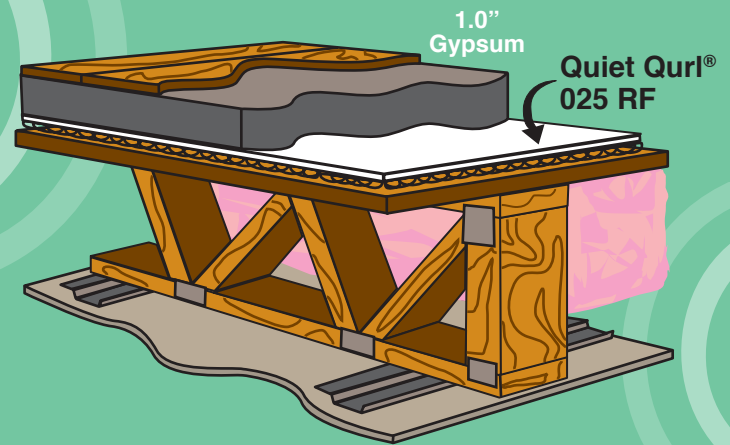


Quiet Qurl® 025 Products

Code driven noise requirements have placed a financial burden on multi-family projects. In this day of litigious practices, even developers of apartments have risks from noise complaints. Quiet Qurl® 025 was designed to provide code compliant noise reduction with most typical finished floors and joist assemblies.

When used with a 1.0" gypsum concrete pour, this low-profile system can achieve code STC and IIC needs for the new UBC. Quiet Qurl® 025 is available with a moisture-control fabric, reinforced fabric, or the enhanced noise control MT version.

Installed coast-to-coast and for some of the biggest names in apartment and condo development, Quiet Qurl® 55/025 is the right product in noise attenuation.



- ✓ Polypropylene polymer core of tangled monofilaments
- ✓ Fabric options include: blue moisture control, reinforced, or muffling technology
- ✓ Class A fire-rated
- ✓ Robinson Wheel tested with the Tile Council of America – "extra heavy-duty" rating
- ✓ UL-listed



Patent No.: US 7,096,630
& US 8,146,310

Benefits

- ✓ Excellent performance at reducing sound in mid and high frequencies
- ✓ Performance in wood frame construction and concrete structures
- ✓ "U"-groove design for flat installation
- ✓ Cost-effective choice for achieving code with multiple hard-surface finishes
- ✓ When a resilient ceiling is installed code-compliant solutions in wood frame construction with "I" joists, open web joists and nominal lumber construction



*Quiet Qurl® 025 Products are
0.25 inches thick (6 mm)
and sold in 50-to 100-foot rolls
(200-to 400 sq. ft.)*



Quiet Qurl® 025 Products



| Product | Thickness | Length | Area |
|----------------------|-----------------|---------|-------------|
| Quiet Qurl 025 MC | 0.25 in./6.0 mm | 100 ft. | 400 sq. ft. |
| Quiet Qurl 025 MC MT | 0.25 in./6.0 mm | 50 ft. | 200 sq. ft. |
| Quiet Qurl 025 N MT | 0.25 in./6.0 mm | 100 ft. | 400 sq. ft. |
| Quiet Qurl 025 RF | 0.25 in./6.0 mm | 100 ft. | 400 sq. ft. |
| Quiet Qurl 025 RF MT | 0.25 in./6.0 mm | 50 ft. | 200 sq. ft. |

Accessory Product

| | | | |
|-----------------------------------|------------------|---------|---------------|
| Quiet Qurl Perimeter Isolation | 0.125 in./3.0 mm | 550 ft. | 183.3 sq. ft. |
|-----------------------------------|------------------|---------|---------------|

For a complete list of all our products, please contact KBP, or visit our website at www.KeeneBuilding.com

Applications

- ✓ Multi-family construction: apartments and condominiums
- ✓ When a resilient ceiling is installed
- ✓ Radiant-heated flooring when pumped with lightweight concrete or gypsum
- ✓ With hard surfaces: concrete, stone, tile, vinyl and hardwood
- ✓ With topping layers, such as gypsum concretes, lightweight concrete, mortar beds and plywood
- ✓ With many types of subfloors, and still achieves an IIC of 50 or greater
- ✓ Helps to achieve an STC level of 50 or greater with many types of subfloors

Quiet Qurl® Perimeter Isolation

Quiet Qurl® Perimeter Isolation is an accessory to the Quiet Qurl® sound control system designed to limit flanking sound.

Flanking paths from the floor to the wall are limited by this simple material. The void space is filled so that airborne sound cannot flank either.

The material is 0.125 inches (3.0 mm) thick and 4.0 inches (10 cm) in width. One side has a sticky film attached, and the seam from the wall to the floor is made in a more simple manner, often without taping.

Installed after the Quiet Qurl® sound mat and overlapped in an “L” shape for added safety in preventing underlayment leaks.

QUIET QURL is a component in an overall floor/ceiling assembly. Its performance is affected by every other component and the likelihood of achieving code compliance is contingent upon many other trades including framers, plumbers, drywall contractors to name a few. Developers and general contractors are responsible for building properly and testing field performance as soon as possible in order to assure the reliability of the project.

WARNING: Laboratory tests are not a guarantee of field performance because of the issues noted above and many other design errors that may occur. Please consult a professional acoustical consultant to assure plans are proper and that the floor/ceiling assembly can perform to expectations.



877 | 514 | 5336

Info@KeeneBuilding.com

P 440 | 605 | 1020

www.KeeneBuilding.com

F 440 | 605 | 1120