

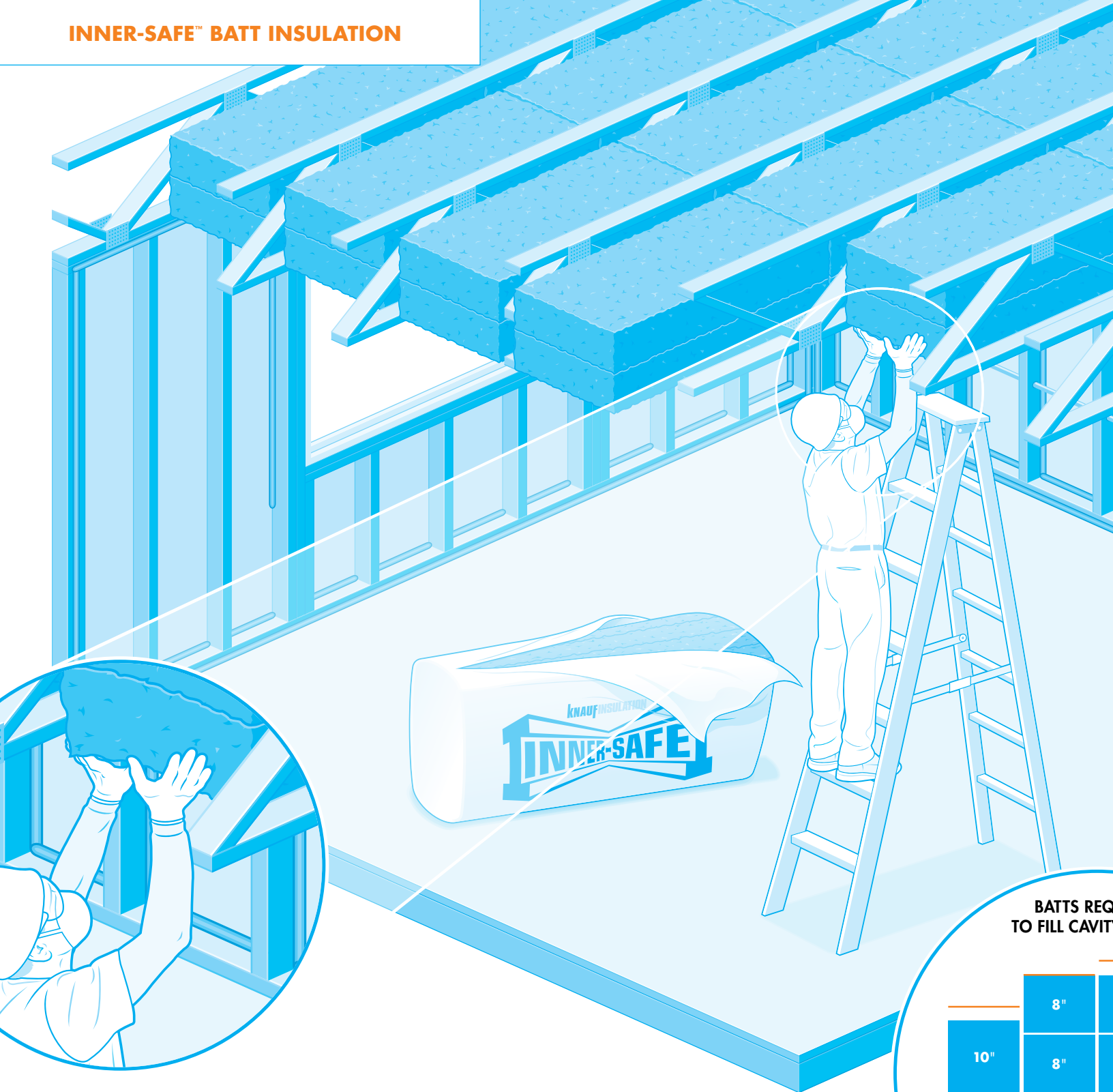


## Inner-Safe™ Batt Insulation

Cost Effective Solutions for  
meeting NFPA 13 Compliance

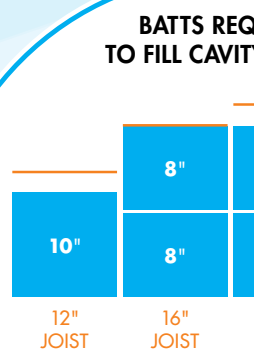


# INNER-SAFE™ BATT INSULATION

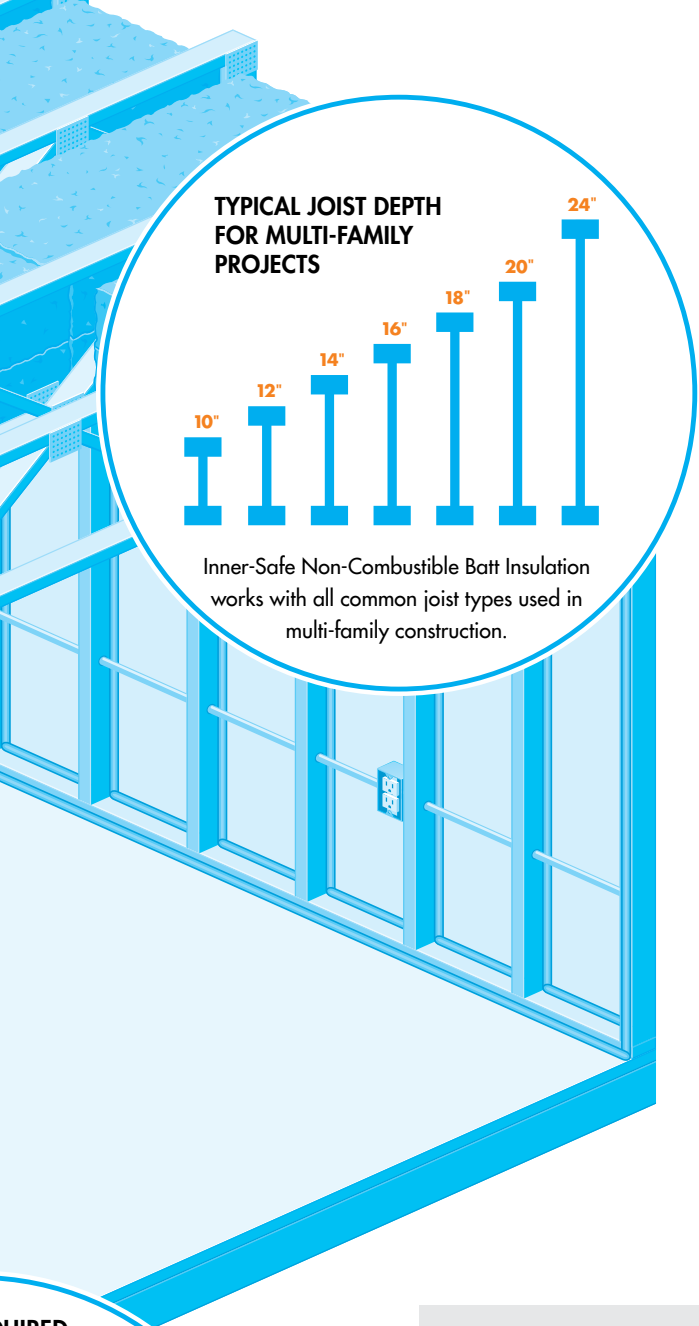


## Presenting a faster, easier and more affordable way to meet NFPA 13 Standard.

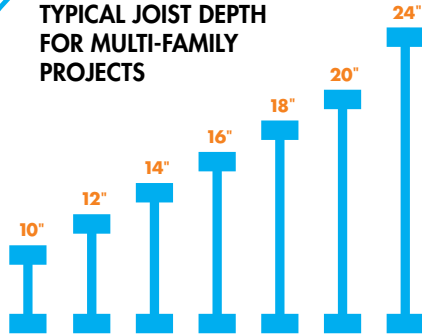
Earlier versions of NFPA 13 Standard mandated the use of sprinkler systems in interstitial spaces for multi-family and mixed-use projects. Current codes allow the installation of Inner-Safe batt insulation as a cost effective means to fill the interstitial space and meet NFPA 13 code compliance. Inner-Safe installs quickly, easily and uses labor efficiently.



The chart above shows a number of different configurations of double-batt configurations that meet the NFPA 13 Standard.



**TYPICAL JOIST DEPTH FOR MULTI-FAMILY PROJECTS**



Inner-Safe Non-Combustible Batt Insulation works with all common joist types used in multi-family construction.

**What Inner-Safe™ brings to your project:**

**Simplicity**

- Satisfies a range of joist depths from 8" to 24"
- Easier to estimate and allocate labor
- Friction-fits into cavities—no fasteners or support needed
- Same batt crews for walls and floor
- Provides easier inspection via a depth indicator on its packaging

**Advantages over sprinklers**

- Requires no specialized labor or equipment to install
- Eliminates long-term maintenance and inspection costs
- Enhances thermal separation and noise reduction

**Advantages over loose fill and traditional batt insulation**

- Requires no additional specialized equipment such as blowing wool trucks or machines, improving job site efficiencies
- Eliminates additional labor and netting needed for loose fill installs
- Installation costs are very competitive

**REQUIRED JOIST DEPTHS**

8"	10"
8"	10"
18" JOIST	20" JOIST

representative sample conditions, in single- or multiple-story buildings, that meet code requirements.

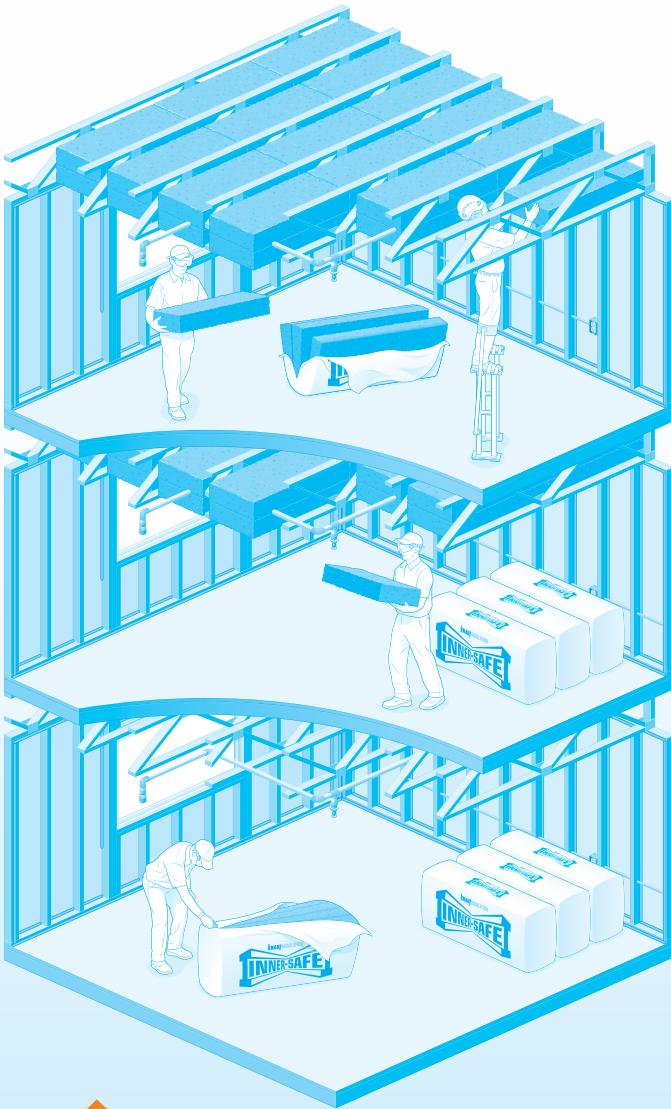
**DEFINING NFPA 13 STANDARD**

**NFPA 13, SECTION 8.15.1.2.7:**

Concealed spaces filled with non-combustible insulation shall not require sprinkler protection.

**NFPA 13, SECTION 8.15.1.2.7.1:**

A maximum 2 in. air gap at the top of the space shall be permitted.



## USE KNAUF INSULATION THROUGHOUT YOUR PROJECT

In multi-family and other construction projects, our products work together to seal the building envelope—offering enhanced comfort, energy-efficiency and sustainability.

Learn more about our full product line now, by visiting [knaufinsulation.us/en/products](http://knaufinsulation.us/en/products)



### TYPICAL HIGH-RISE INFRASTRUCTURE WITH FIRE SPRINKLER RETROFIT

In the past, interstitial space or mid-floors—the area between regular-use floors—has required sprinklers to lessen the threat of fire spreading. But as multi-story buildings rise higher, so does the cost and hours required to install sprinklers. Today, Inner-Safe™ batt insulation lets you cost-effectively meet code while filling the interstitial space.

**Knauf Insulation, Inc.**  
**One Knauf Drive**  
**Shelbyville, IN 46176**

Sales ..... (800) 825-4434, ext. 8485

Technical Support..... (800) 825-4434, ext. 8727

[www.knaufinsulation.us](http://www.knaufinsulation.us)

This product is covered by one or more U.S. and/or other patents.  
 See [www.knaufinsulation.us/patents](http://www.knaufinsulation.us/patents)

© 2018 Knauf Insulation, Inc. BI-BTIS-BR | 10-18



**KNAUF**INSULATION