

COLOR SELECTION GUIDE



50 Crystal White



48 Meadowbrook



53 Pure Ivory



73 Egg Shell



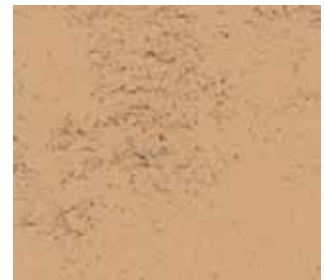
24 Santa Fe



55 French Vanilla



17 Misty



79 Villa



71 Miami Peach



72 Adobe



12 Chablis



23 Aspen

Colors may vary from the color chart. Printed color charts are as closely representative to actual colors as modern printing technology allows. Final color selection should always be made from an actual sample. Custom colors require additional lead time, additional fees and minimum order quantities apply. Finish color can vary dramatically depending on the application method and the porosity color and texture of the surface.

Any recommendation or suggestion relating to the use of MER-KO products made via current technical literature, marketing materials, technical application guides, specifications, and the like, or in response to specific inquiry or otherwise, is based on data believed to be reliable. However, the products and information are intended for use by Buyers having requisite skill and know-how in the industry. Therefore, it is the responsibility of the Buyer to satisfy the necessary requirements of suitability of the products for its own particular use, and it shall be deemed that Buyer has done so, at its sole discretion and risk. Variation in environment, changes in procedures of use, or extrapolation of data may cause unsatisfactory results. Mer-Ko believes the information contained herein is true and accurate as of the date of publication. Information contained here is for evaluation only. Mer-Ko reserves the right to modify and/or change products or literature at any time and without prior notice.

Corporate Office

Parex USA, Inc.
4125 E. La Palma Ave., Suite 250
Anaheim, CA 92807
(866) 516-0061
Tech Support: (800) 226-2424

