

# Guide to Construction Chemicals

Products for the  
Construction, Repair, and  
Protection of Concrete

Concrete Curing  
Compounds

Form Treatments

Curing and Sealing  
Compounds

Non-Shrink Grouts

Dry Polished Concrete

Evaporation Reducer

Joint Protection  
and Crack Repair

Liquid Chemical  
Hardeners and  
Densifiers

Dry Shake  
Floor Hardeners  
and Toppings

Patch and Repair  
Products

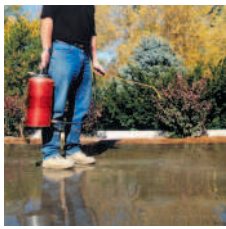
Repellents and  
Surface Protection



A product brand on LATICRETE International, Inc.



[www.GreenSpec.com](http://www.GreenSpec.com)



## Concrete Curing Compounds

**L&M Cure R and R2:** Water borne, ready-to-use, clear resin based membrane curing compounds. The membrane forming ability of **L&M Cure R** is designed to retain sufficient moisture to properly hydrate concrete placements. Available in clear and white pigmented formulations. **COMPLIANCE:** ASTM-C-309 Type 1 and Type 2

**L&M Cure W and W2:** Water-borne, VOC compliant, ready-to-use wax based curing compounds. **L&M Cure W/W2** are not recommended for floors scheduled to receive subsequent treatments or toppings. Available in Clear and white pigmented formulations. **COMPLIANCE:** ASTM-C-309; AASHTO-M-148, Type 1 and Type 2



## Curing and Sealing Compounds

**Lumiseal FX:** L&M's blush resistant, non-yellowing, decorative acrylic curing and sealing compound. Recommended for interior and exterior decorative and colored concrete placements. Formulated with advanced water based, low VOC emulsion chemistry. Sprayable, low odor, resists blushing and blistering. ASTM C 309. Type 1.

**Lumiseal Plus:** A 100% non-yellowing, very high gloss, pure acrylic cure and sealing compound. Popular sealer for colored, patterned and stamped concrete. **COMPLIANCE:** ASTM-C-309; ASTM-C-1315. VOC most states. Available in solvent and water based formulas.

**Dress & Seal:** Cures, seals and dustproofs concrete surfaces, effectively sealing out job site dirt, oil, and mortar drippings. Allows proper bonding of resilient tiles. Resists yellowing. Easy to apply. **COMPLIANCE:** ASTM-C-309, Type 1; ASTM-C-1315, Grade B. VOC most states.

**Dress & Seal WB:** General purpose water based acrylic blend cure, sealer, VOC compliant. **Dress & Seal WB** effectively cures, seals and dustproofs concrete and assists in proper strength development. Resists yellowing. Very low odor. Easy to apply. Available in high solids formulation, **Dress & Seal WB 30.**

**COMPLIANCE: Dress & Seal WB:** ASTM C-309; **Dress & Seal WB 30:** ASTM 309; ASTM-C1315. VOC all states.



## Evaporation Reducer

**E-Con:** On fresh concrete, **E-Con** prevents premature and rapid loss of moisture from the concrete surface. **E-Con** effectively minimizes the negative effects of rapid drying conditions due to high temperatures, low humidity, high winds, and direct sunlight.



## Form Treatments

**Debond Form Coating:** L&M's high-performance, chemical release agent eliminates concrete buildup from all types of forms, in all types of weather. Excellent for wood, aluminum, and steel forms. VOC compliant, **Debond** forms a water-resistant barrier, greatly reducing form maintenance and concrete surface holes). Low odor **Debond** contains no diesel fuel or fuel oil, highly refined raw materials. Reduces concrete build-up and defects.

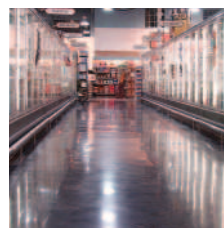


## Non-Shrink Grouts

**Crystex:** Our "top of the line" precision, non-shrink structural grout. Extended placement time. Designed for critical grout applications under vibrating machinery and in applications where high flow, non-shrink performance is needed. Conforms to ASTM C-1107 at all temperatures and flow ranges.

**DuragROUT:** Cement-based, general use construction grout. Ideal for column base plates, anchor bolts, small equipment, and grouting concrete wall penetrations. Conforms to ASTM C-1107 at a plastic and flowable consistency.

**EpogROUT 758:** Epoxy resin grout cures at normal temperatures into a tough, non-shrinking, structural grout of high chemical resistance. **EpogROUT 758** is scientifically formulated to withstand severe dynamic load shock in marine and heavy-duty industrial applications.



## Dry Polished Concrete



**FGS Hardener Plus:** Chemical hardener and densifier solution formulated to increase wear resistance and surface durability of polished concrete floors. The essential component of the **FGS/PermaShine** Polished Concrete floor system.

**FGS Conditioner:** Proprietary concrete cleaner and conditioner designed for ongoing maintenance of hardened, polished concrete floors. Highly concentrated, and specially formulated component of the **FGS/PermaShine** Polished Concrete floor system. Regular use reinforces surface durability and improves floor appearance.



**Vivid Dye:** L&M's premier line of concrete dyes. Formulated using extremely fine molecules of color designed to penetrate

and color any interior concrete surface. Recommended for use with the **FGS/PermaShine** polished concrete floor system. Can also be used as a base color or touch up for acid stained concrete or as a coloring agent itself. Available in many attractive colors in VOC compliant solvent or water based formulas.

## Dry Polished Concrete, continued

**PermaGuard SPS:** The penetrating stain protector designed specifically to help protect polished concrete floors from water, petroleum, and stains. Formulated with low odor, low VOC polymers, and repellent ingredients to protect and beautify polished concrete floors. Enhances durability and ease of maintenance.

**Petrotex:** L&M's silane / siloxane water and oil repellent for concrete, masonry and stone surfaces. Ready to use, quick drying, low-VOC, water-based solution. Contained in a proprietary blend of silane, siloxane, and fluoro-polymers, **Petrotex** penetrates and effectively treats polished commercial and industrial concrete floors, concrete pavements, and driveways to resist penetration and damaging effects of water and petroleum spills.



## Liquid Chemical Hardeners and Densifiers



Protects Concrete Where It Counts

**Seal Hard:** L&M's top-of-the-line, new generation concrete chemical hardener, densifier, dustproofer, and sealer. **Seal Hard** hardens and seals the concrete near surface wear zone better than any product

in its class. **Seal Hard** is recommended for use on ACI Class 4, 5, and 9 (super flat) floors. USDA approved. Ten-year warranty against dusting available with certified applicator.

**Chem Hard:** Hardens and dustproofs concrete surfaces by chemical reaction. This sodium silicate penetrating treatment is odorless and economical. Five year warranty against dusting.

**LiON Hard:** LiON Hard is a chemical hardener and densifier treatment designed to increase concrete wear resistance and surface durability. Features water saver technology.



## Dry Shake Floor Hardeners and Toppings

**Emerytop 400:** The most durable floor system available. **Emerytop 400** is a flowable, heavy duty emery topping for ACI Class 6 and 7 industrial floors. **Emerytop 400** produces a concrete floor surface that gives longer service life than normal high strength concrete, iron, or trap rock toppings.

**Emeryplate FF:** The industry's ultimate dry shake for industrial floors requiring additional abrasion resistance and impact protection. **Emeryplate FF** is engineered to be able to spread onto a newly placed, highly plastic slab, yet still achieve a flat floor. Rust-free performance is ideal for wet conditions.

**Quartzplate FF:** Ready mixed, 98% pure quartz silica aggregate, dry-shake hardener that increases floor surface durability from four to five times over normal concrete. Contains graded aggregates and proprietary admixtures that allow this product to be broadcast onto a highly plastic slab to achieve a flat floor. Colors and light reflective formulations are available.

**Grip It and Grip It AO:** Emery and aluminum oxide aggregates. Designed to produce a non-slip concrete surface by broadcast application onto freshly placed concrete.



## Joint Protection and Crack Repair

**Joint Tite 750:** L&M's fast-setting, polyurea joint filler that protects interior saw cuts, control joints, and random concrete floor cracks subjected to heavy loads and high volume of forklift traffic from edge spalling and deterioration.

**PERK! Restore:** PERK! Restore is a two component, quick setting, concrete patch and repair product. Use PERK! Restore to fix random cracks, spalls, and joint walls in concrete.



## Patch and Repair Products

**Duracrete:** Single component, polymer-reinforced, high-strength, cement-based patching and repair mortar. **Duracrete** has been designed to repair, slope, or level structurally sound concrete surfaces that are pitted, worn, scaled, or spalled. Effective for interior and exterior applications. When properly applied, **Duracrete** will produce a strong, durable, well-bonded surface of desired texture.

**Durapatch Hiway:** L&M's cement-based, very rapid hardening patching system develops quick, high strengths. Is non-shrink and provides excellent bonding qualities in both flowable and no-slump consistencies. Recommended in application depths of 1" or more.

**Durapatch HP & Durapatch TGA:** High-strength, self leveling, polishable overlays and wear toppings. Durapatch HP and TGA assure an attractive, durable concrete repair surface for worn, uneven and pitted existing concrete floors.

**Fastrak:** High-strength, cement-based concrete and masonry patching compounds. For up to 30 minutes, **Fastrak** may be shaved or shaped to conform to surrounding surface contour. **Fastrak** produces a concrete repair that is structurally sound and visually pleasing.



## Repellents and Surface Protection

**Aquapel and Aquapel Plus:** Protect horizontal concrete from the damaging effects of water and road salts. Aquapel products are water-based silane/siloxane treatments that are odorless, non-flammable, and VOC compliant. One coat recommended for most applications. Long lasting, penetrating. **COMPLIANCE:** NCHRP 244; ASTM-C-672; ASTM-E-514

**Hydroblock and Hydropel WB:** Hydroblock & Hydropel WB are L&M's water repellents for dense and porous vertical masonry, block and concrete substrates.



**PERK!:** PERK! is a fast-setting, polyaspartic sealer and top coat for concrete surfaces. Available in many different colors and textures.

## Memberships and Affiliations



**Online  
lmcc.com**

- U.S. Green Building Council (USGBC)
- National Floor Safety Institute (NFSI)
- American Concrete International (ACI)
- Construction Specifications Institute (CSI)
- American Society of Concrete Contractors (ASCC)
- American Standards and Testing Methods (ASTM)

### **The American Institute of Architects (AIA)**

Under its Continuing Education System (CES), has recognized L&M Construction Chemicals as a registered Passport Provider. L&M has AIA/CES registered programs available on concrete and related subjects. Each of these classroom programs is designed to inform and educate the novice and experienced user/specifier about concrete and its properties. Under the provisions of the AIA /CES these programs are accredited based on contact hours.

Contact L&M Construction Chemicals for more information.

- Searchable Product Catalogs
- Online Technical Support
- Questions and Answers
- Literature
- MSDS
- Concrete News Online



14851 Calhoun Road, Omaha, NE 68152 USA  
1.800.362.3331 | +1.402.453.6600 | [www.lmcc.com](http://www.lmcc.com)

A product brand of LATICRETE International, Inc.

