

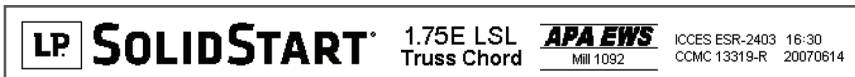


Whether you need straighter, longer lengths or I-Joist compatible depths for attic and girder truss applications, LP SolidStart LSL offers strengths and lengths beyond traditional lumber.

LP SolidStart 1.75E LSL Truss Chord is an ideal alternative to traditional lumber or LVL Truss Chords and can be easily identified by a unique stamp from our manufacturing facility. In addition to LP's customary quality assurance procedures, LP SolidStart LSL Truss Chord materials undergo truss plate connection testing to assure structural performance in real world truss chord applications.

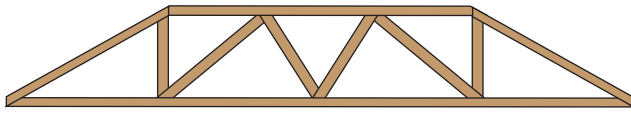
Exclusive LP SolidStart LSL advantages:

- 1.75E LSL combines quality and high strength properties
- Straighter, stronger, and longer than traditional lumber
- Available in a variety of lengths to maximize efficiency
- Excellent plate retention
- Truss plates are applied with existing manufacturing equipment
- Included in both MiTek and ITW software for easy specification
- Manufactured with formaldehyde-free resins
- End and edge-sealed to help protect against moisture

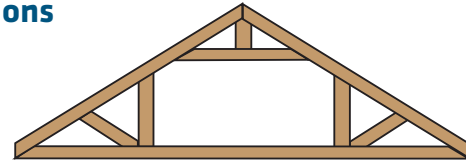


Look for the truss chord stamp on your product.

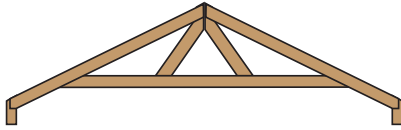
Common Applications



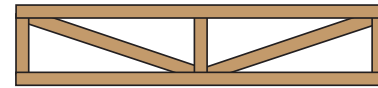
GIRDER



ATTIC



TAIL BEARING



FLAT

Now you can get strengths and lengths beyond traditional lumber.

LP SolidStart 1.75E LSL Truss Chords are available in:

- Lengths up to 48'
- Depths of 3-1/2," 5-1/2," 7-1/4," 9-1/4," 9-1/2," 11-1/4," 11-7/8" and 14"



Please verify availability with the LP SolidStart Engineered Wood Products distributor in your area before specifying these products.

For more information on the full line of LP SolidStart Engineered Wood Products or the nearest distributor, please contact 1.888.820.0325 or e-mail customer.support@lpcorp.com. Visit us at LPCorp.com.



SFI-00003

⚠ WARNING: Drilling, sawing, sanding or machining wood products can expose you to wood dust, a substance known to the State of California to cause cancer. Avoid inhaling wood dust or use a dust mask or other safeguards for personal protection. For more information go to www.P65Warnings.ca.gov/wood.