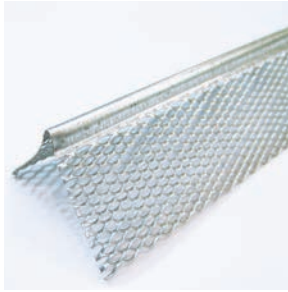


VENEER BEAD & TRIM

Finishing Products & Accessories

VENEER CORNER BEAD (MINI BEAD 800/900)



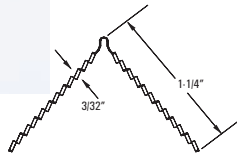
USE: Galvanized steel, used with one-coat or two-coat veneer systems to provide 3/32" grounds. With 1-1/4" fine mesh flanges, either stapled or nailed, provides an effective plaster key and eliminates shadowing

STOCK LENGTHS:

10 Ft.

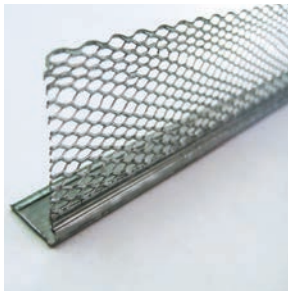
PACKAGING:

60 pieces per carton



Product	Size		Length		Carton Quantity				
	in.	(mm)	ft.	(mm)	No. Pcs.	Weight		Length	
						lbs.	(kg)	ft.	(m)
Veneer	1-1/4	(31.8)	8	(2440)	60	40	(18.1)	480	(146.3)
Corner Bead			10	(3050)	60	50	(22.1)	600	(182.9)

VENEER L TRIM

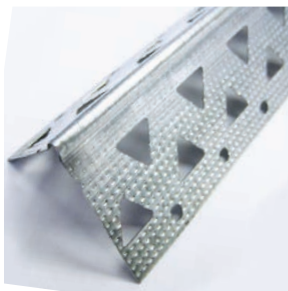


USE: As a veneer plaster stop and as an exposed trim around windows and doors. It is also used in conjunction with veneer corner bead.



Product	Size		Length		Carton Quantity				
	in.	(mm)	ft.	(mm)	No. Pcs.	Weight		Length	
						lbs.	(kg)	ft.	(m)
Veneer	1/2	(12.7)	10	(3050)	50	41	(18.6)	500	(152.5)
L Trim	5/8	(15.9)	10	(3050)	50	44	(20.0)	500	(152.5)

K-RITE CORNER BEAD



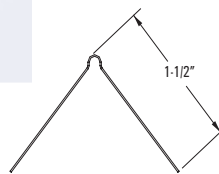
USE: A veneer bead used as an alternate to mini mesh veneer bead. It has a 1-1/2" leg and triangle cut-outs for one or two coat veneer plaster application. K-Rite corner bead is compatible with all brands of one and two coat plaster systems or multi-layer drywall construction. Perfect choice for repairs, column construction and new construction.

STOCK LENGTHS:

10 Ft.

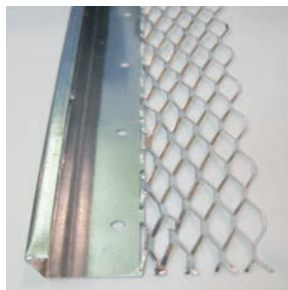
PACKAGING:

60 pieces per carton

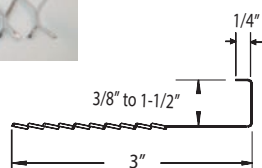


Product	Size		Length		Carton Quantity				
	in.	(mm)	ft.	(mm)	No. Pcs.	Weight		Length	
						lbs.	(kg)	ft.	(m)
K-Rite Corner Bead	1-1/2	(38.1)	8	(2440)	60	58.1	(26.3)	480	(146)
			9	(2730)	60	65.3	(29.6)	600	(165)
			10	(3050)	60	72.6	(32.9)	600	(183)
			12	(3657)	60	87.1	(39.5)	600	(219)

#66 EXPANDED FLANGE CASING BEAD



USE: As a plaster stop and as exposed trim around window and door openings. Can also be used at the junction or the intersection of plaster and other wall or ceiling finishes. Zinc should be used for exterior applications. Available with weep holes.



Product	Depth or Grounds		Length		Carton Quantity				
	in.	(mm)	ft.	(m)	No. Pcs.	Weight		Length	
						lbs.	(kg)	ft.	(m)
#66 Expanded Flange Casing Bead, Galvanized	3/8 to 1-1/2	(9.5)	10	(3.05)	30	48	(21.8)	300	(91.4)
			10	(3.05)	30	55	(24.9)	300	(91.4)
			10	(3.05)	30	56	(25.5)	300	(91.4)
			10	(3.05)	30	58	(26.4)	300	(91.4)
			10	(3.05)	30	62	(28.2)	300	(91.4)
			10	(3.05)	30	65	(29.9)	300	(91.4)
			10	(3.05)	30	68	(31.0)	300	(91.4)
			10	(3.05)	30	72	(32.7)	300	(91.4)
#66 Expanded Flange Casing Bead, Zinc	1/2	(12.7)	10	(3.05)	30	51	(23.2)	300	(91.4)
			10	(3.05)	30	59	(26.8)	300	(91.4)