

DEFLECTION DRIFT ANGLE (DDA-1) FIRE BLOCK

MANUFACTURED BY **CERCO**

Description

Deflection Drift Angle (DDA-1) is a composite steel angle with intumescent tape factory applied to the inside leg of the steel angle, the CEMCO DDA-1 is a fire-rated accessory that when combined with the Slotted Track or J-Runner track will offer unencumbered movement at the head-of-wall joint in accordance with the UL-2079 "Test for Fire Resistance of Building Joint Systems". The 1-1/4 inch outside leg is manufactured in red and labeled for proper identification, and provides up to 1" overall dynamic movement.

Size (in.)	Length (ft.)	Steel Thickness mil (gauge)
5/8 x 1-1/4	10	18 (25)

U.S. Patent 8,595,999

ASTM's & Code Standards

- ASTM A653, C645, A1003, A924
- ASTM E 1966: Standard Test Method of Fire Tests of Firestop Systems
- UL 2079 5th Edition Tests For Fire Resistance of Building Joints
- ASTM E-119 Standard Test Methods for Fire Tests of Building Construction and Material
- Sound Tested in accordance with ASTM E90-09 up to STC 66
- Air leakage tests conducted for compliance with Section 713.6 of IBC and CBC
- ICC-ES 2012

LEED v3 for Building and Design Construction

- MR Credit 2: Construction Waste Management.
- MR Credit 4: Recycled Content.

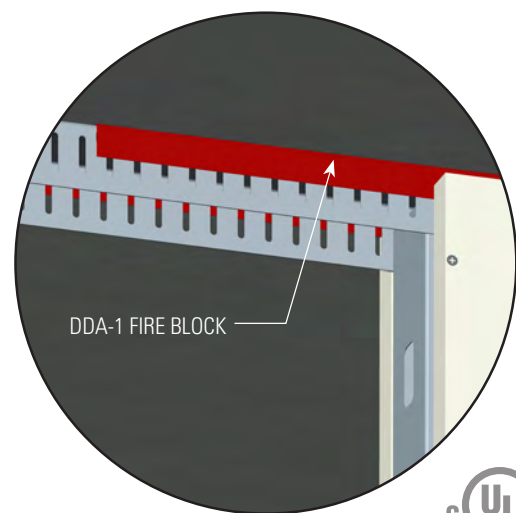
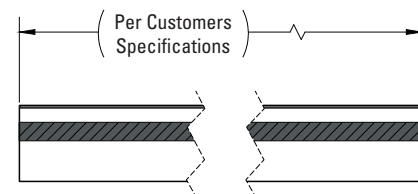
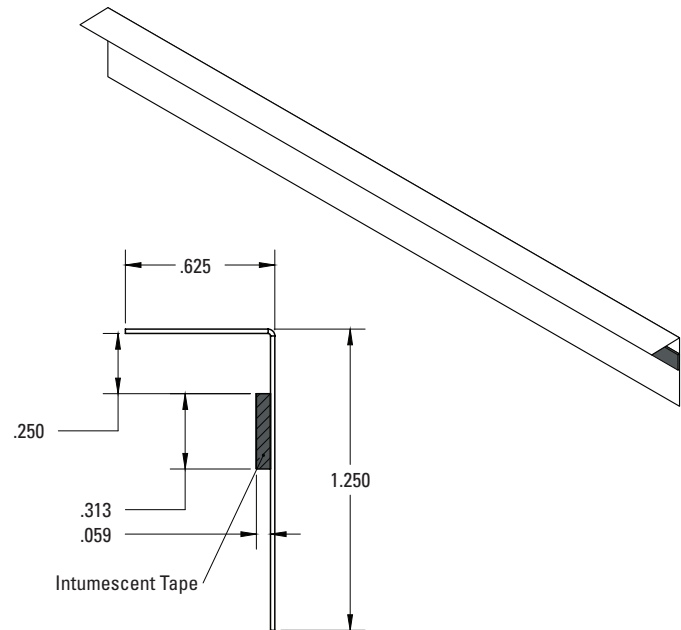
LEED v4 for Building and Design Construction

- MR Prerequisite: Construction and Demolition Waste Management Planning.
- MR Credit: Construction and Demolition Waste Management.
- MR Credit: Building Product Disclosure and Optimization – Sourcing of Raw Materials, Option 2.
- MR Credit: Building Product Disclosure and Optimization – Environmental Product Declarations, Options 1 & 2.
- MR Credit: Building Product Disclosure and Optimization – Material Ingredients, Option 1.
- MR Credit: Building Life-Cycle Impact Reduction, Option 4.

Cold-formed steel framing products contain

30% to 37% recycled steel

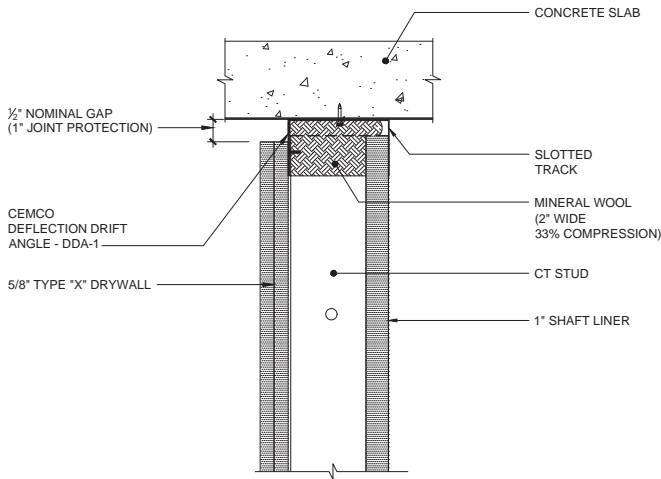
- Total Recycled Content: 36.9%
- Post-Consumer: 19.8%
- Pre-Consumer: 14.4%
- UL report #'s HW-D-0514; HW-D-0515; HW-D-0518; HW-D-0524 HW-D-0550; HW-D-0551; HW-D-0553; HW-D-0554; HW-D-0556; HW-D-0579; HW-D-0580; HW-D-0581; HW-D-0582; HW-D-0583; HW-D-0596; HW-D-0620; HW-D-062 HW-D-0652, BW-S-0024; WW-D-0104



Typical Details | Deflection Drift Angle (DDA-1)

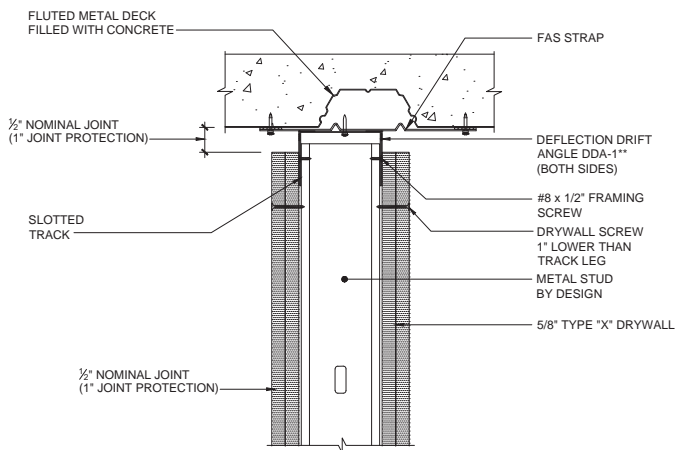
Composite Steel/Intumescent Firestop Framing Assemblies

HW-D-0585 2 HR. SHAFT WALL, CONCRETE SLAB



*NOTE: SINGLE LAYER OF 5/8" TYPE "X" DRYWALL FOR 1 HOUR FIRE RATING, 2 LAYERS FOR 2 HOUR

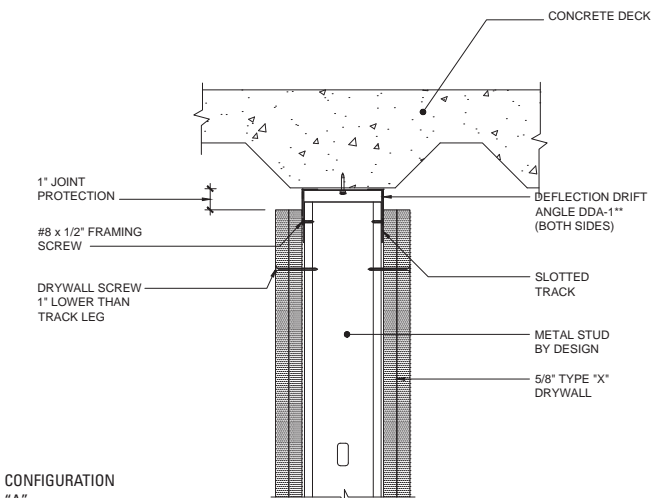
HW-D-0524 STANDARD WALL, OFFSET & PARALLEL UNDER FLUTED DECK



CONFIGURATION "A"

*NOTE: SINGLE LAYER OF 5/8" TYPE "X" DRYWALL FOR 1 HOUR FIRE RATING, 2 LAYERS FOR 2 HOUR

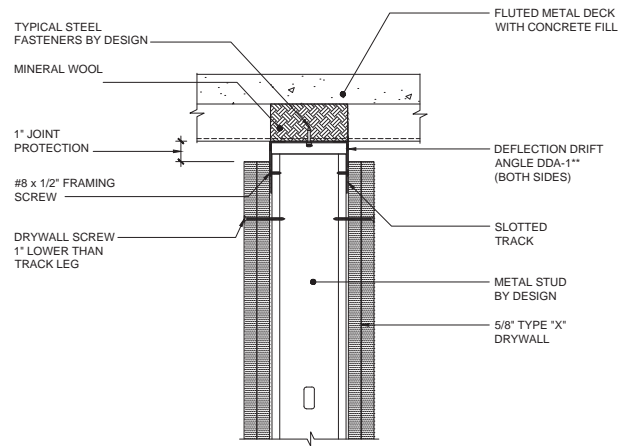
HW-D-0620 STANDARD WALL, PARALLEL & DIRECTLY UNDER FLUTED DECK



CONFIGURATION "A"

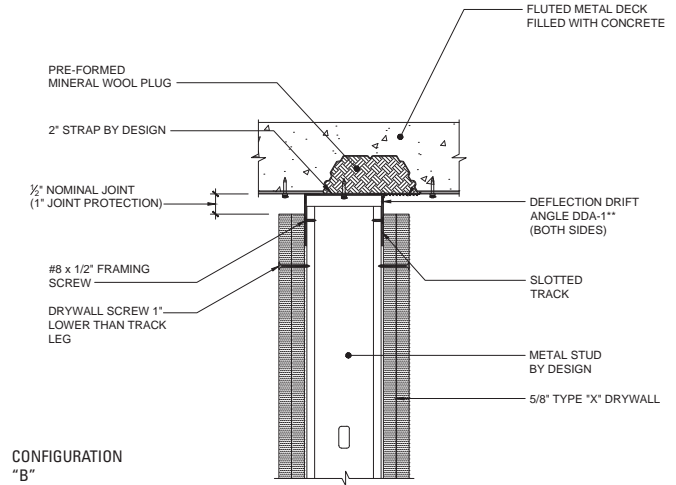
*NOTE: SINGLE LAYER OF 5/8" TYPE "X" DRYWALL FOR 1 HOUR FIRE RATING, 2 LAYERS FOR 2 HOUR

HW-D-0518 STANDARD WALL, PERPENDICULAR TO FLUTED DECK



*NOTE: SINGLE LAYER OF 5/8" TYPE "X" DRYWALL FOR 1 HOUR FIRE RATING, 2 LAYERS FOR 2 HOUR

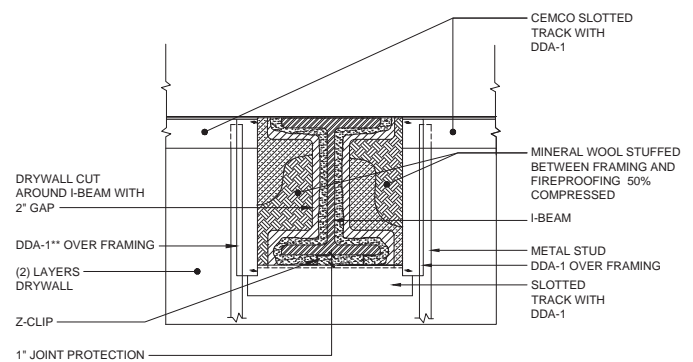
HW-D-0524 STANDARD WALL, OFFSET & PARALLEL UNDER FLUTED DECK



CONFIGURATION "B"

*NOTE: SINGLE LAYER OF 5/8" TYPE "X" DRYWALL FOR 1 HOUR FIRE RATING, 2 LAYERS FOR 2 HOUR

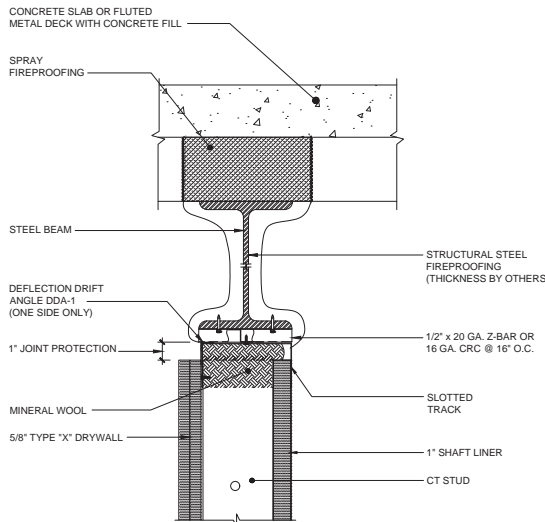
HW-D-0573 STANDARD WALL, @ FLUTED DECK BEAM PENETRATION



*NOTE: SINGLE LAYER OF 5/8" TYPE "X" DRYWALL FOR 1 HOUR FIRE RATING, 2 LAYERS FOR 2 HOUR

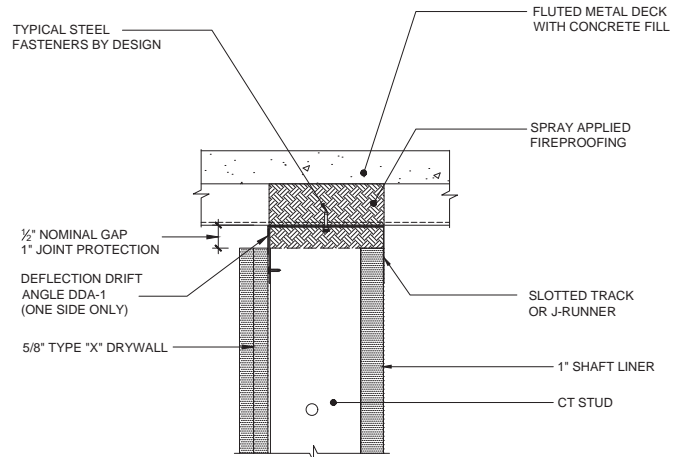
**If the IBC requires UL-2079 5th edition, additional fill material may be needed in the deflection joint

HW-D-0622 SHAFT WALL, DIRECTLY UNDER BEAM



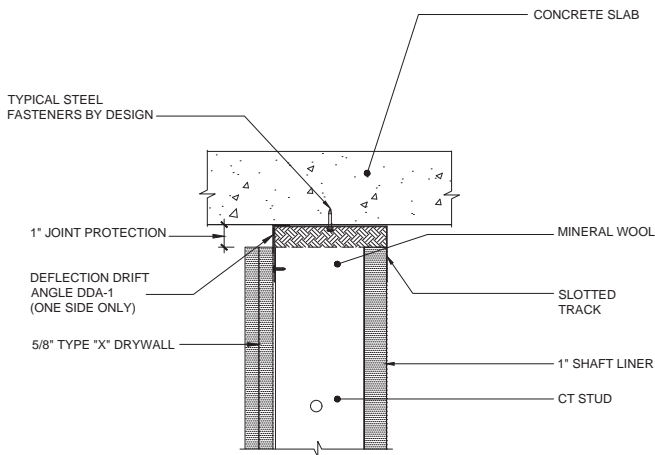
*NOTE: SINGLE LAYER OF 5/8" TYPE "X" DRYWALL FOR 1 HOUR FIRE RATING, 2 LAYERS FOR 2 HOUR

HW-D-0525 SHAFT WALL, PERPENDICULAR TO FLUTED DECK



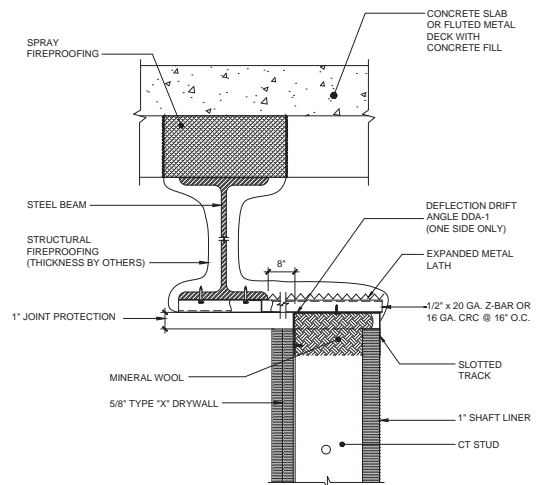
*NOTE: SINGLE LAYER OF 5/8" TYPE "X" DRYWALL FOR 1 HOUR FIRE RATING, 2 LAYERS FOR 2 HOUR

HW-D-0557 SHAFT WALL UNDER CONCRETE SLAB



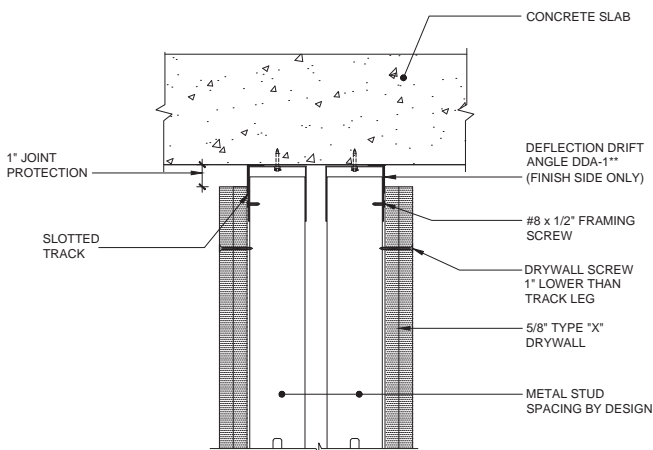
*NOTE: SINGLE LAYER OF 5/8" TYPE "X" DRYWALL FOR 1 HOUR FIRE RATING, 2 LAYERS FOR 2 HOUR

HW-D-0653 SHAFT WALL, PARALLEL & CANTILEVER UNDER BEAM



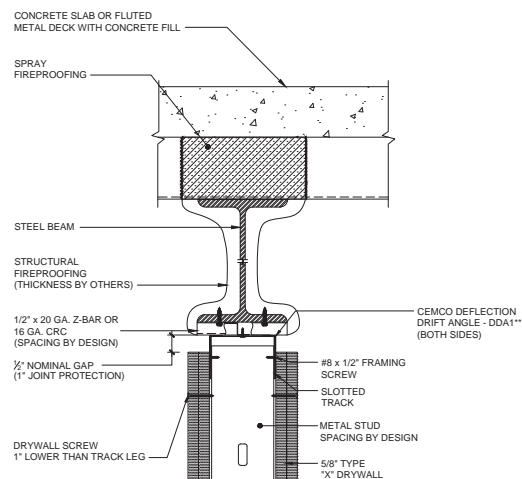
*NOTE: SINGLE LAYER OF 5/8" TYPE "X" DRYWALL FOR 1 HOUR FIRE RATING, 2 LAYERS FOR 2 HOUR

HW-D-0554 2 HR. STANDARD CHASE WALL, CONCRETE SLAB



*NOTE: SINGLE LAYER OF 5/8" TYPE "X" DRYWALL FOR 1 HOUR FIRE RATING, 2 LAYERS FOR 2 HOUR

HW-D-0551 2 HR. PARALLEL & CENTERED DIRECTLY UNDER BEAM



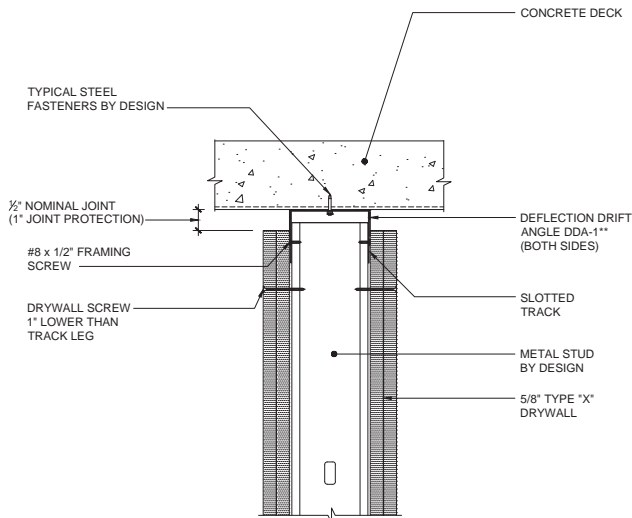
*NOTE: SINGLE LAYER OF 5/8" TYPE "X" DRYWALL FOR 1 HOUR FIRE RATING, 2 LAYERS FOR 2 HOUR

**If the IBC requires UL-2079 5th edition, additional fill material may be needed in the deflection joint

Typical Details | Deflection Drift Angle (DDA-1)

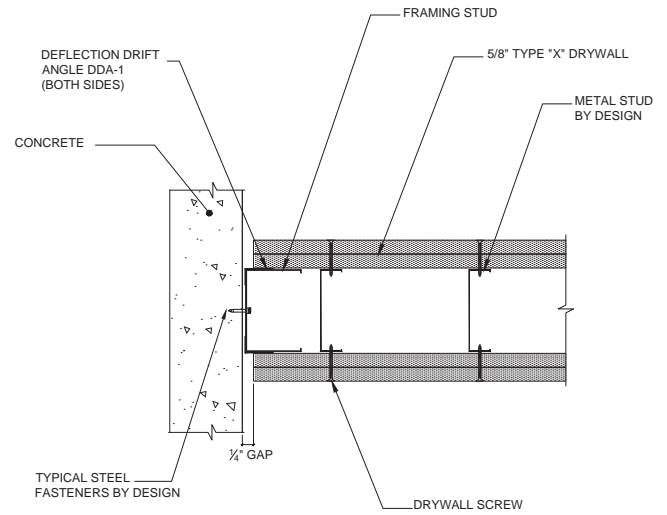
Composite Steel/Intumescent Firestop Framing Assemblies

HW-D-0515 STANDARD WALL, PERPENDICULAR TO FLUTED DECK



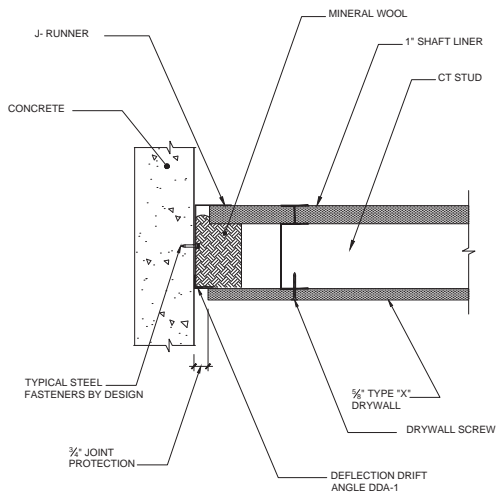
*NOTE: SINGLE LAYER OF 5/8" TYPE "X" DRYWALL FOR 1 HOUR FIRE RATING, 2 LAYERS FOR 2 HOUR

VV-D-0104 2 HR. VERTICAL TIE-IN TO CONCRETE SLAB



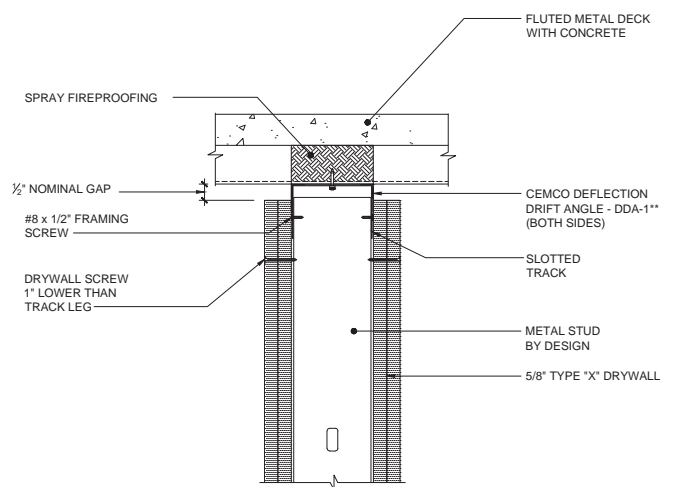
*NOTE: SINGLE LAYER OF 5/8" TYPE "X" DRYWALL FOR 1 HOUR FIRE RATING, 2 LAYERS FOR 2 HOUR

VV-S-0061 1 HR. SHAFT WALL VERTICAL TIE-IN TO CONCRETE SLAB



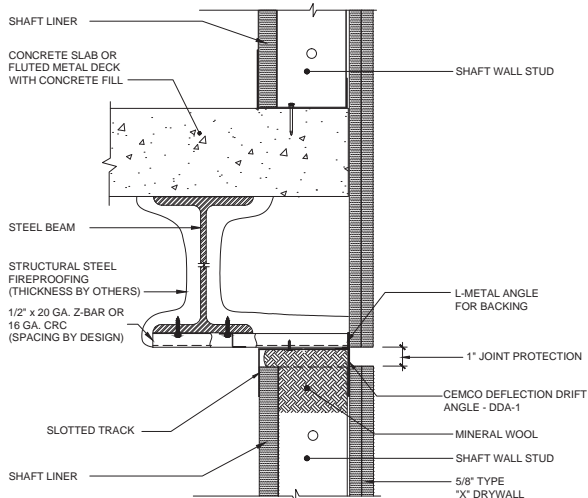
*NOTE: SINGLE LAYER OF 5/8" TYPE "X" DRYWALL FOR 1 HOUR FIRE RATING, 2 LAYERS FOR 2 HOUR

HW-D-0514 STANDARD WALL, PERPENDICULAR TO FLUTED DECK



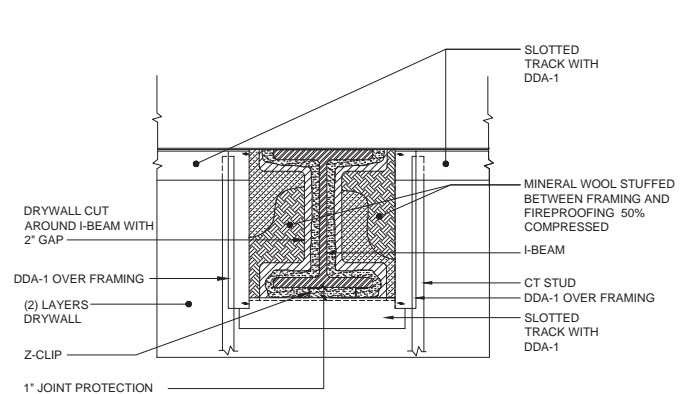
*NOTE: SINGLE LAYER OF 5/8" TYPE "X" DRYWALL FOR 1 HOUR FIRE RATING, 2 LAYERS FOR 2 HOUR

HW-D-0622 2 HR. SHAFT WALL, UNDER STAIRWELL SLAB BYPASS @ BEAM



*NOTE: SINGLE LAYER OF 5/8" TYPE "X" DRYWALL FOR 1 HOUR FIRE RATING, 2 LAYERS FOR 2 HOUR

HW-D-0623 SHAFT WALL, @ FLUTED DECK BEAM PENETRATION



*NOTE: SINGLE LAYER OF 5/8" TYPE "X" DRYWALL FOR 1 HOUR FIRE RATING, 2 LAYERS FOR 2 HOUR

**If the IBC requires UL-2079 5th edition, additional fill material may be needed in the deflection joint