



Product Description

MarinoWARE FIRE BEAD is a surface mounted deflection bead tested to UL 2079. It provides 1 & 2 hour firestop solutions in joints for both standard and shaft wall assemblies.

- ☛ Tested with up to 50% compression.
- ☛ Remains flexible for the life of the assembly.
- ☛ Can be used in top-of-wall, bottom-of-wall, and vertical joints.
- ☛ Installs fully cured, unaffected by water/moisture/temperature.
- ☛ Combines a vinyl bubble gasket, a perforated mud leg and intumescent strip to provide an aesthetically pleasing joint in exposed locations.
- ☛ Provides a single step installation of both a code compliant firestop and finished drywall accessory in a single component.
- ☛ Installs on the face of the drywall with a perforated mud leg incorporated to accept joint compound.
- ☛ Easily installs using spray adhesive and staples.
- ☛ Sound Transmission Classification (STC) ratings supported by two separate compressible sealing points. One against the deck and the other against the steel framing. STC ratings match the performance of acoustic sealant.
- ☛ Paintable.

Ordering / Packaging

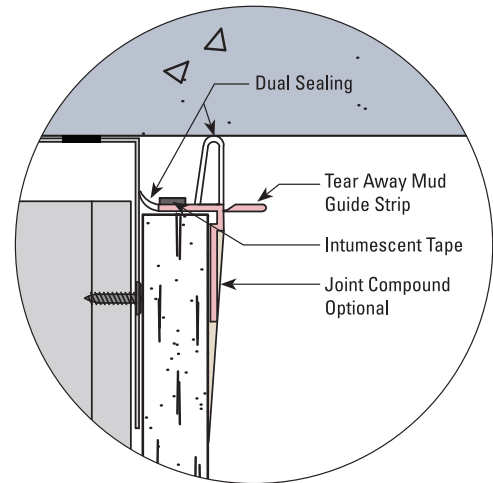
Description	Part #	Size	Length	Pcs/Ctn	Movement	Submitted for Review/ Use	✓
FIRE BEAD (1 hour)	FB1	1/2" x 5/8"	10'	30	1/2" total	FB1	
FIRE BEAD (2 hour)	FB2	1/2" x 1-1/4"	10'	22	1/2" total	FB2	

Storage / Warranty

- ☛ When stored indoors and kept dry in the original package, Fire Bead will provide unlimited shelf life.
- ☛ See Firestop Product Warranty for details.

ASTM & Code Standards

- ☛ ASTM E-84
- ☛ ASTM E-90
- ☛ ASTM E-1966
- ☛ UL 2079 5th Edition
- ☛ Cal State Fire (BML) 1451-2376:0004
- ☛ L-Rating (air leakage) testing for compliance with International Building Code (IBC) and Canadian Building Code (CBC).
- ☛ UL listings/approvals include: BW-S-0024; HW-D-0550, HW-D-0554; HW-D-0624; HW-S-0128; WW-D-0104; WW-D-0172
- ☛ **U.S. Patent No. 11,111,666; 11,873,636**



Always check UL Fire resistance directory for complete design requirements.

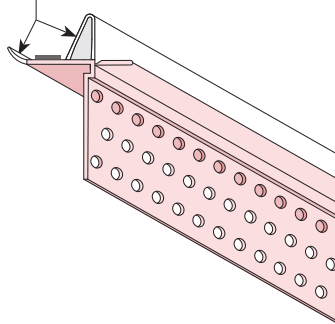
For more information, please contact MarinoWARE® Technical Services at 866.545.1545

This technical information reflects the most current information available and supersedes any and all previous publications effective

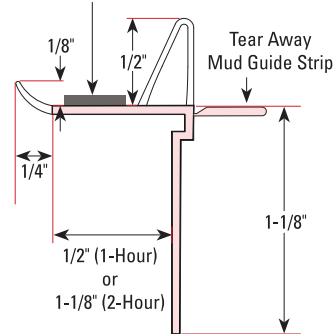
June 17, 2025 | MW_Firestop_Catalog | ©WARE Industries, Inc. 2025

FB1/FB2

Flexible Material 70 Durometer



Intumescent Tape



← View the installation video!



← View the installation guide!



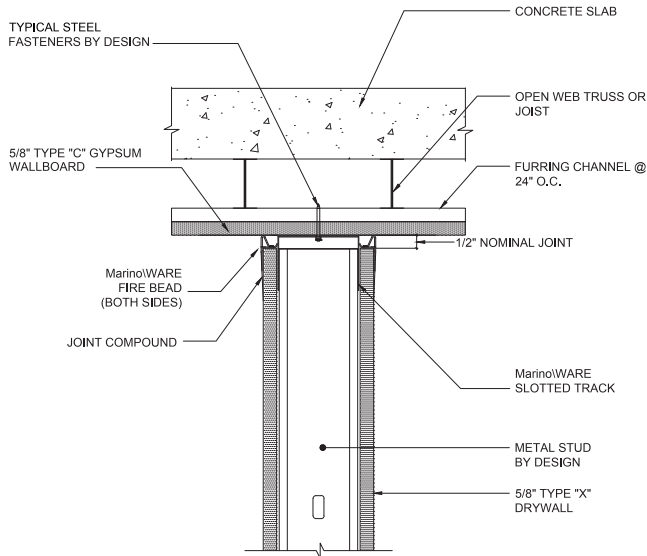
Always check UL Fire resistance directory for complete design requirements.

For more information, please contact MarinoWARE® Technical Services at 866.545.1545

This technical information reflects the most current information available and supersedes any and all previous publications effective

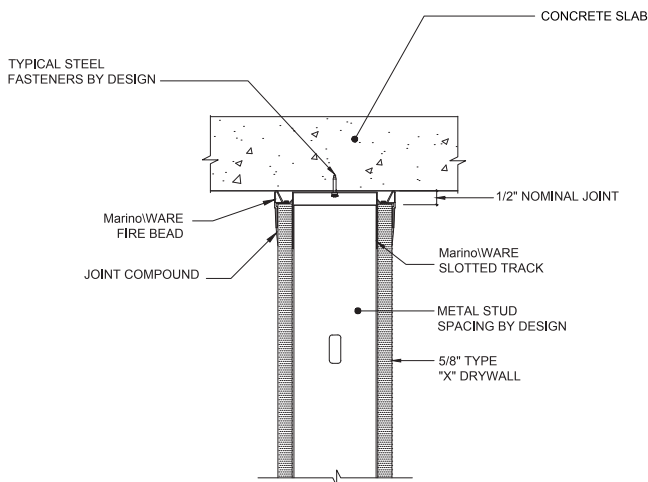
June 17, 2025 | MW_Firestop_Catalog | ©WARE Industries, Inc. 2025

HW-D-0550 1HR STANDARD WALL, GYPSUM WALLBOARD CEILING



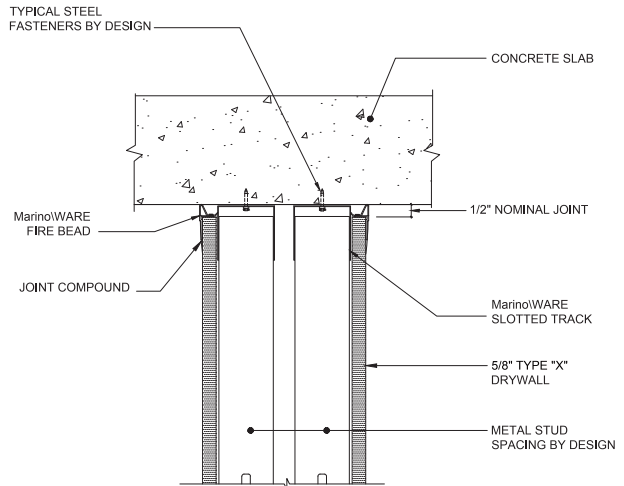
*NOTE: SINGLE LAYER OF 5/8" TYPE "X" DRYWALL FOR 1 HOUR FIRE RATING, 2 LAYERS FOR 2 HOUR

HW-D-0624 1HR STANDARD WALL, CONCRETE DECK



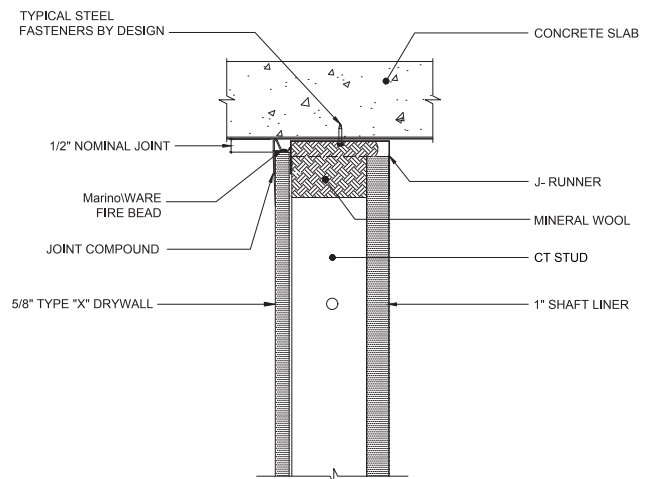
*NOTE: SINGLE LAYER OF 5/8" TYPE "X" DRYWALL FOR 1 HOUR FIRE RATING, 2 LAYERS FOR 2 HOUR

HW-D-0554 1HR STANDARD CHASE WALL, CONCRETE SLAB



*NOTE: SINGLE LAYER OF 5/8" TYPE "X" DRYWALL FOR 1 HOUR FIRE RATING, 2 LAYERS FOR 2 HOUR

HW-D-0625 1HR SHAFT WALL, CONCRETE SLAB



CONFIGURATION
"A"

*NOTE: SINGLE LAYER OF 5/8" TYPE "X" DRYWALL FOR 1 HOUR FIRE RATING, 2 LAYERS FOR 2 HOUR

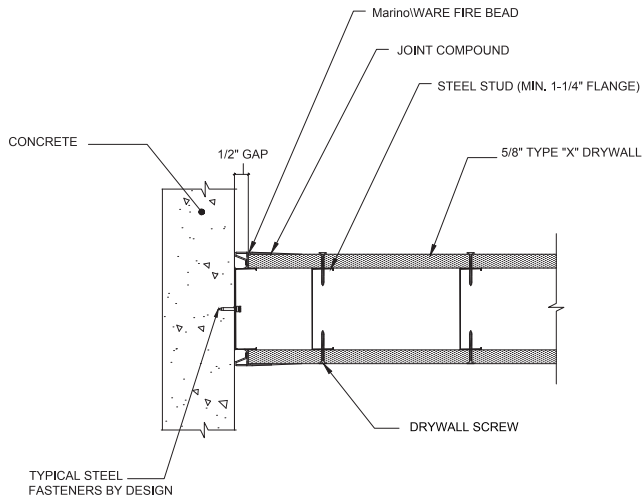
Always check UL Fire resistance directory for complete design requirements.

For more information, please contact MarinoWARE® Technical Services at 866.545.1545

This technical information reflects the most current information available and supersedes any and all previous publications effective

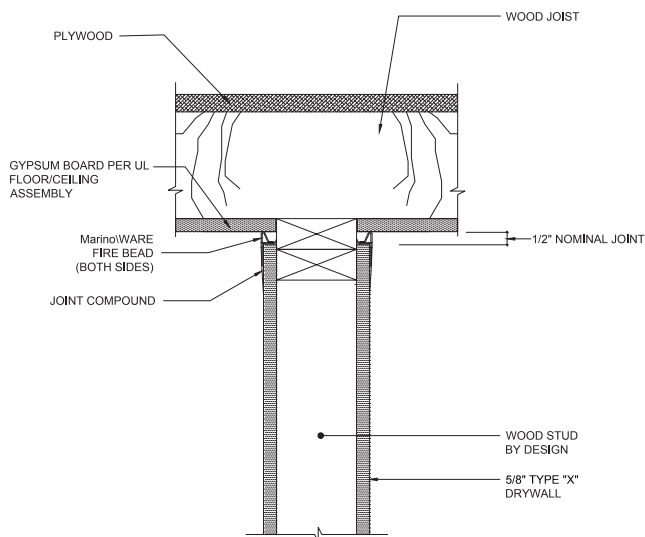
June 17, 2025 | MW_Firestop_Catalog | ©WARE Industries, Inc. 2025

WW-D-0104 1HR VERTICAL TIE-IN TO CONCRETE SLAB



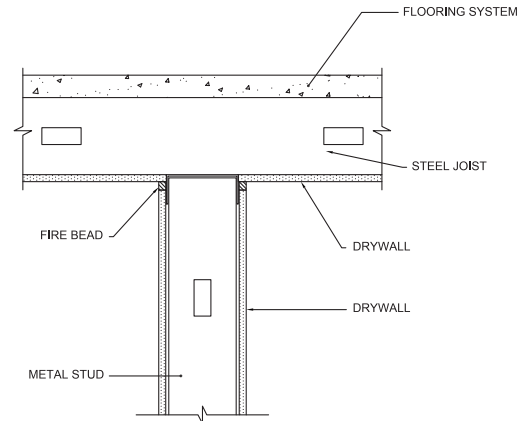
*NOTE: SINGLE LAYER OF 5/8" TYPE "X" DRYWALL FOR 1 HOUR FIRE RATING, 2 LAYERS FOR 2 HOUR

HW-S-0128 FIRE BEAD FOR WOOD FRAMING



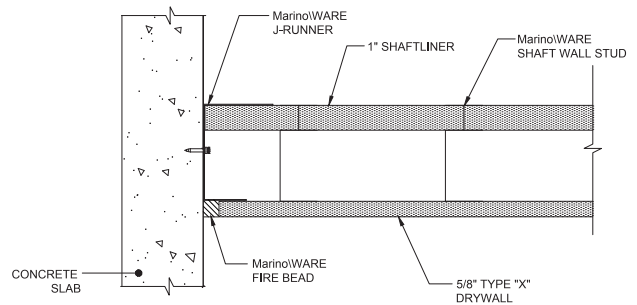
*NOTE: SINGLE LAYER OF 5/8" TYPE "X" DRYWALL FOR 1 HOUR FIRE RATING, 2 LAYERS FOR 2 HOUR

HW-S-0128 STEEL JOIST FLOORING



*NOTE: SINGLE LAYER OF 5/8" TYPE "X" DRYWALL FOR 1 HOUR FIRE RATING, 2 LAYERS FOR 2 HOUR

WW-S-0094 SHAFT WALL VERTICAL JOINT



*NOTE: SINGLE LAYER OF 5/8" TYPE "X" DRYWALL FOR 1 HOUR FIRE RATING, 2 LAYERS FOR 2 HOUR

Always check UL Fire resistance directory for complete design requirements.

For more information, please contact MarinoWARE® Technical Services at 866.545.1545

This technical information reflects the most current information available and supersedes any and all previous publications effective

June 17, 2025 | MW_Firestop_Catalog | ©WARE Industries, Inc. 2025