

DEFLECTION CONNECTORS

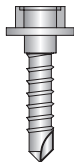
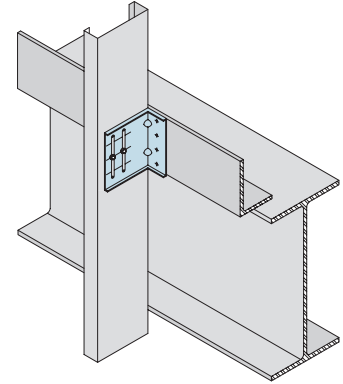
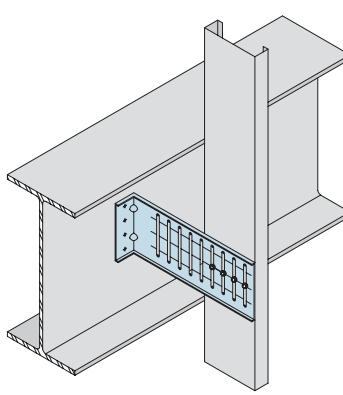
WSC SLIDE CLIPS

WSC Slide clips connect exterior curtain wall studs to the building structure and allow for vertical movement of the building independent of the studs. The WSC series allows for 3" total deflection, 1-1/2" up and 1-1/2" down. WSC series 14 ga. clips come with extended leg lengths and shouldered screws are provided in each box of clips. 25 pieces per box.

MATERIAL: See Table

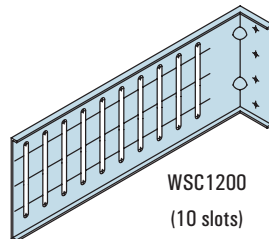
FINISH: Galvanized – G90

Part No.	Ga/Mil	Material	Finish	Size
WSC362	14ga (68)	50 KSI	G-90	4" x 1.5" x 3.5"
WSC600	14ga (68)	50 KSI	G-90	4" x 1.5" x 5.5"
WSC800	14ga (68)	50 KSI	G-90	4" x 1.5" x 7.5"
WSC1000	14ga (68)	50 KSI	G-90	4" x 1.5" x 9.5"
WSC1200	14ga (68)	50 KSI	G-90	4" x 1.5" x 11.5"

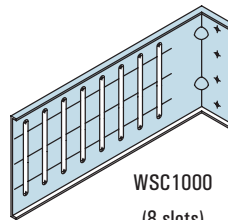


100 – #14 Shouldered screws included per box.

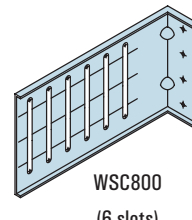
*(Note: WSC362 includes 50 - #14 shouldered screws per box).



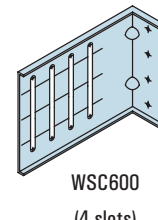
WSC1200
(10 slots)



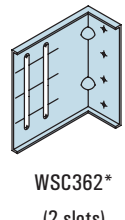
WSC1000
(8 slots)



WSC800
(6 slots)



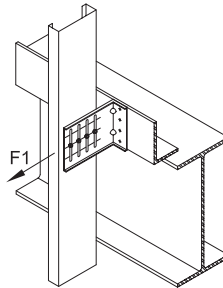
WSC600
(4 slots)



WSC362*
(2 slots)

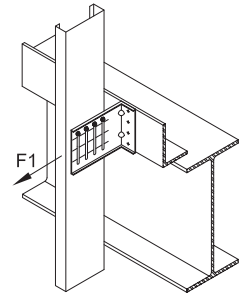
CONCENTRIC TENSION (lbs.)

# Screws	CFS Member			
	33 mil	43 mil	54 mil	68 mil
2	376	560	652	652
3	564	840	978	978
4	752	1120	1304	1304
5	940	1400	1559	1559



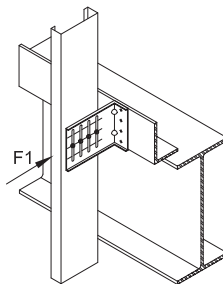
ECCENTRIC TENSION (lbs.)

# Screws	CFS Member			
	33 mil	43 mil	54 mil	68 mil
2	376	560	652	652
3	564	840	978	978
4	752	1120	1304	1304
5	940	1315	1315	1315



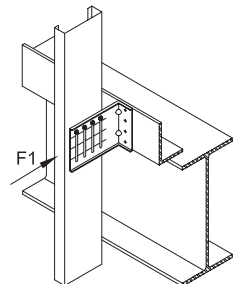
CONCENTRIC COMPRESSION (lbs.)

# Screws	CFS Member			
	33 mil	43 mil	54 mil	68 mil
2	376	560	652	652
3	564	840	966	966
4	752	966	966	966
5	940	966	966	966



ECCENTRIC COMPRESSION (lbs.)

# Screws	CFS Member			
	33 mil	43 mil	54 mil	68 mil
2	376	560	652	652
3	564	788	788	788
4	752	788	788	788
5	788	788	788	788



Notes:

- Allowable loads have not been increased for wind or seismic.
- Attachment of WSC clip to main structure should be engineered by a design professional for steel or concrete base materials.
- Allowable loads are based on attachment to main structure through pilot holes with #10-24 cap screws with a head diameter of 0.29".
- Safety factor, Ω , determined in accordance with the provision of section F1.2 of the NASPEC with statistical data specified in AC208 and from test data.
- The serviceability limit of 1/8" deflection between the stud and supporting structure did not govern in testing.
- Eccentric tension and compression values represent clip capacity after structure deflects $\pm 1-1/2"$ up or down from center of the clip.