

Marino\WARE® Product Submittal Data

MARINO\WARE PART # WSC800

MATERIAL: See Table
FINISH: Galvanized – G90
SCREWS: 110 –#14 Shouldered screws included per box.

| Part No. | Ga/Mil | Material | Finish | Size |
|----------|-----------|----------|--------|-------------------|
| WSC362 | 14ga (68) | 50 KSI | G-90 | 4" x 1.5" x 3.5" |
| WSC600 | 14ga (68) | 50 KSI | G-90 | 4" x 1.5" x 5.5" |
| WSC800 | 14ga (68) | 50 KSI | G-90 | 4" x 1.5" x 7.5" |
| WSC1000 | 14ga (68) | 50 KSI | G-90 | 4" x 1.5" x 9.5" |
| WSC1200 | 14ga (68) | 50 KSI | G-90 | 4" x 1.5" x 11.5" |

CONCENTRIC TENSION (lbs.)

| # Screws | CFS Member | | | |
|----------|------------|--------|--------|--------|
| | 33 mil | 43 mil | 54 mil | 68 mil |
| 2 | 376 | 560 | 652 | 652 |
| 3 | 564 | 840 | 978 | 978 |
| 4 | 752 | 1120 | 1304 | 1304 |
| 5 | 940 | 1400 | 1559 | 1559 |

ECCENTRIC TENSION (lbs.)

| # Screws | CFS Member | | | |
|----------|------------|--------|--------|--------|
| | 33 mil | 43 mil | 54 mil | 68 mil |
| 2 | 376 | 560 | 652 | 652 |
| 3 | 564 | 840 | 978 | 978 |
| 4 | 752 | 1120 | 1304 | 1304 |
| 5 | 940 | 1400 | 1315 | 1315 |

CONCENTRIC COMPRESSION (lbs.)

| # Screws | CFS Member | | | |
|----------|------------|--------|--------|--------|
| | 33 mil | 43 mil | 54 mil | 68 mil |
| 2 | 376 | 560 | 652 | 652 |
| 3 | 564 | 840 | 966 | 966 |
| 4 | 752 | 966 | 966 | 966 |
| 5 | 940 | 966 | 966 | 966 |

ECCENTRIC COMPRESSION (lbs.)

| # Screws | CFS Member | | | |
|----------|------------|--------|--------|--------|
| | 33 mil | 43 mil | 54 mil | 68 mil |
| 2 | 376 | 560 | 652 | 652 |
| 3 | 564 | 788 | 788 | 788 |
| 4 | 752 | 788 | 788 | 788 |
| 5 | 788 | 788 | 788 | 788 |

NOTES

- Allowable loads have not been increased for wind or seismic.
- Attachment of WSC clip to main structure should be engineered by a design professional for steel or concrete base materials.
- Allowable loads are based on attachment to main structure through pilot holes with #10-24 cap screws with a head diameter of 0.29".
- Safety factor, Ω , determined in accordance with the provision of section F1.2 of the NASPEC with statistical data specified in AC261 and from test data.
- The serviceability limit of 1/8" deflection between the stud and supporting structure did not govern in testing.
- Eccentric tension and compression values represent clip capacity after structure deflects +/- 1-1/2" up or down from center of the clip.

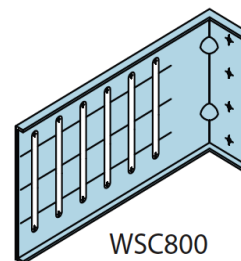
GREEN INFO LEED® v3

Available LEED® points in the following categories:

- MR Credit 2 - Construction Waste Management (1-2 points)
- MR Credit 4 - Recycled Content (1-2 points)
- MR Credit 5 - Regional Materials (1-2 points)

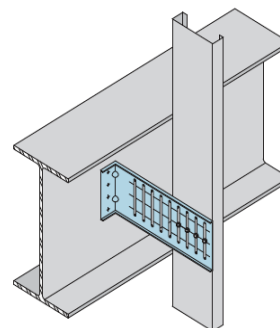
- Total Recycled Content: 34.9%
- Post Consumer Content: 24.3%
- Pre Consumer (Post Industrial) Content: 9.4%

WSC800

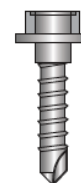


WSC800
(6 slots)

WSC APPLICATION



#14 Shouldered Screws



For more information, please contact Marino\WARE Technical Services at 866-545-1545.

This technical information reflects the most current information available and supersedes any and all publications, effective 12/1/2010.
 © Copyright 2010 by Ware Industries, Inc. All rights reserved

