

HOTROD TYPE-X COMPRESSIBLE FIRESTOPPING

MANUFACTURED BY **CEMCO**

Product Description

HOTROD Type-X is a compressible intumescent firestopping that provides 1 and 2 hour fire-ratings for both dynamic and static joints according to UL-2079 5th edition (for both standard walls and shaft walls) and is sound tested according to ASTM E90, tested up to a STC 68.

- HOTROD has a rectangular profile and is easily compressed into the deflection gap between the edge of the drywall and adjoining structure.
- HOTROD is red in color and is easily identified by the inspector.
- HOTROD is non-wicking as it does not wick water, and is non-hygroscopic. HOTROD will not absorb water readily under field conditions.
- HOTROD takes the place of BOTH fire and sound sealant and will not shrink, pull away, or harden over time.
- HOTROD can be installed by itself or can be covered with tape and joint compound for exposed walls.
- HOTROD provides BOTH 1 and 2 hour fire ratings with both 1/2" X 1" and 1" X 1" profiles.
- HOTROD provides an L-rating Less Than 1 CFM/Lin Ft for ambient and 400 degrees F.

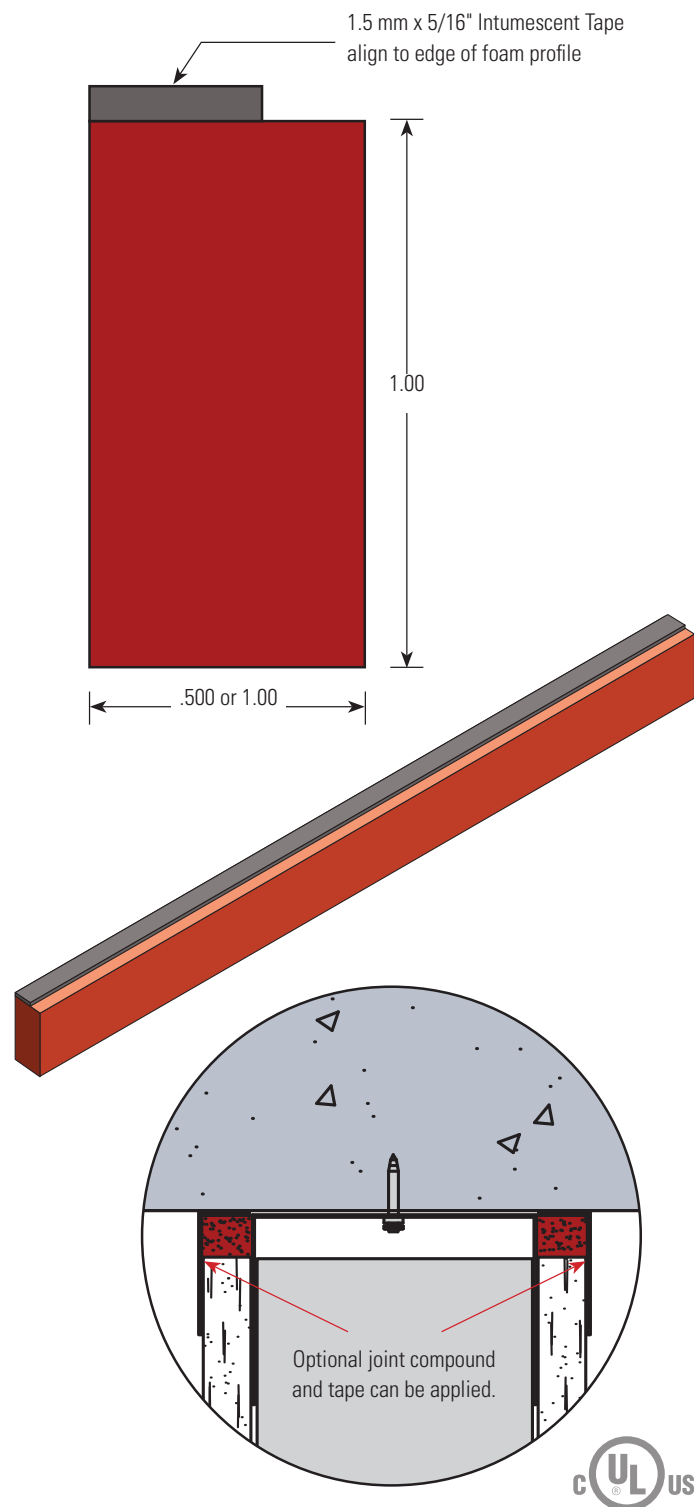
Once installed per the appropriate UL report and manufacturers guidelines the HOTROD's intumescent material will not breakdown, and will provide consistent fire protection for the sustainable life of the assembly.

Packaging

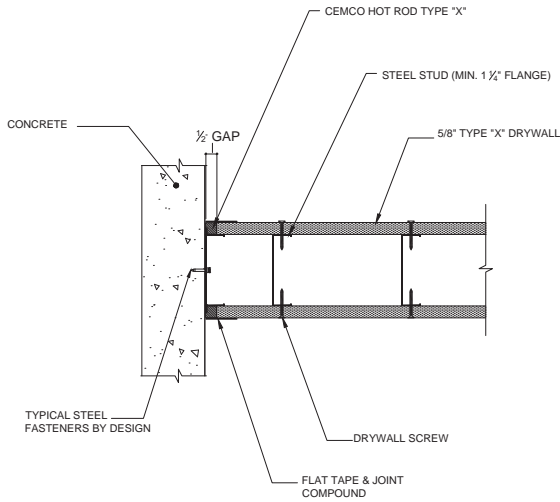
- 4'-0" lengths; 1/2" X 1" 20 pieces per box; 1" X 1" 10 pieces per box, 30 boxes per pallet.
- When properly stored indoors, and in original packaging HOTROD will not breakdown and has no expiration date.

ASTM & Code Standards

- ASTM E 1966: Standard Test Method of Fire Tests of Firestop Systems – UL 2079 Tests For Fire Resistance of Building Joints.
- ASTM E-119 Standard Test Methods for Fire Tests of Building Construction and Material – Sound Tested in accordance with ASTM E90-09 – Air leakage tests conducted for compliance with Section 713.6 of IBC and CBC.
- UL listings/approvals – HW-D-0624; HW-D-0625; HW-D-0554; HW-D-0550; BW-S-0024; WW-D-0104; WW-S-0057.
- U.S. Patent No. 9,683,364

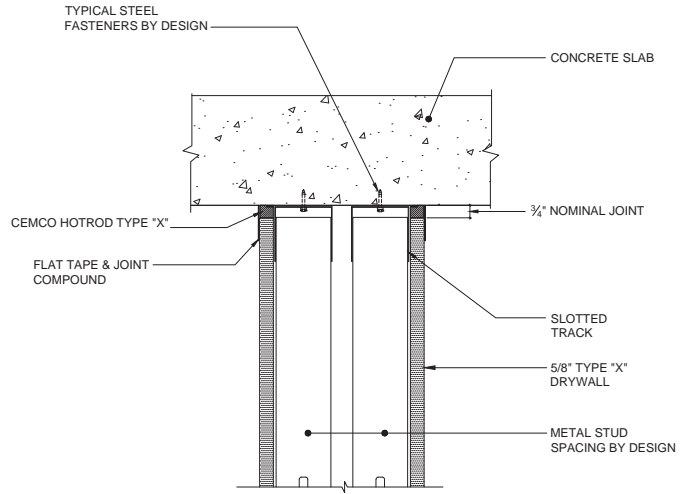


WW-S-0057 1HR. VERTICAL TIE-IN TO CONCRETE SLAB



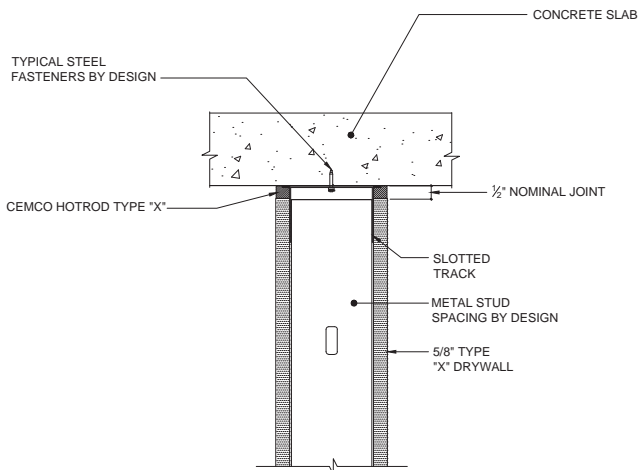
*NOTE: SINGLE LAYER OF 5/8" TYPE "X" DRYWALL FOR 1 HOUR FIRE RATING, 2 LAYERS FOR 2 HOUR

HW-D-0554 STANDARD CHASE WALL, CONCRETE SLAB



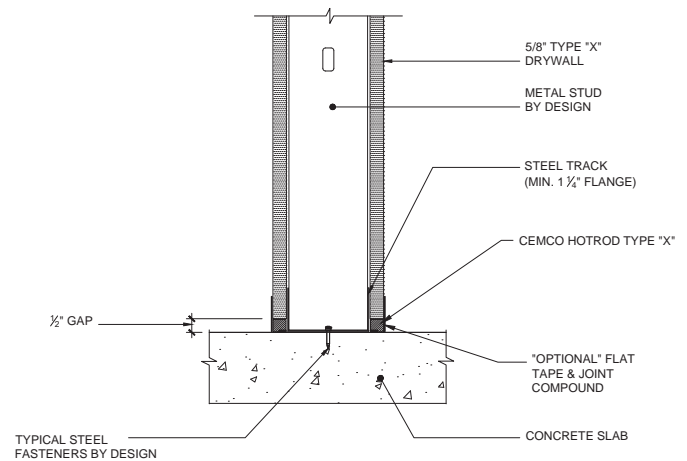
*NOTE: SINGLE LAYER OF 5/8" TYPE "X" DRYWALL FOR 1 HOUR FIRE RATING, 2 LAYERS FOR 2 HOUR

HW-D-0624 1HR. STANDARD WALL, CONCRETE DECK



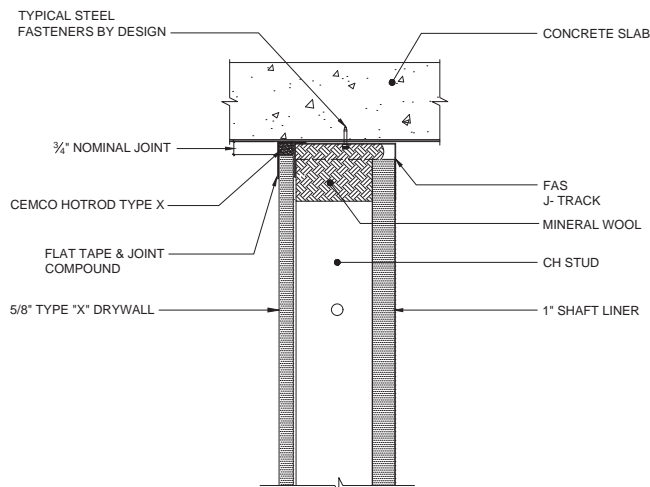
*NOTE: SINGLE LAYER OF 5/8" TYPE "X" DRYWALL FOR 1 HOUR FIRE RATING, 2 LAYERS FOR 2 HOUR

BW-S-0024 1HR. BOTTOM WALL STATIC JOINT



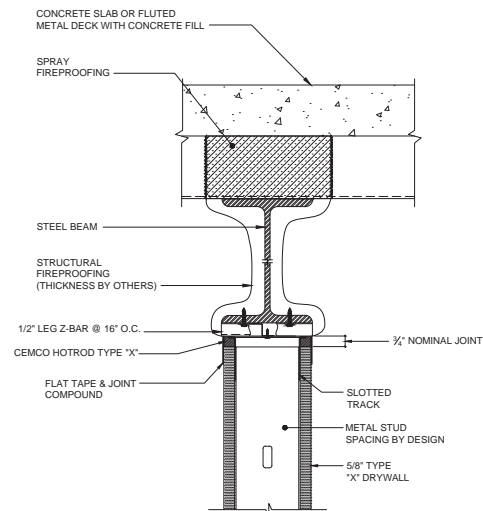
*NOTE: SINGLE LAYER OF 5/8" TYPE "X" DRYWALL FOR 1 HOUR FIRE RATING, 2 LAYERS FOR 2 HOUR

HW-D-0625 1 HR. SHAFT WALL, CONCRETE SLAB



*NOTE: SINGLE LAYER OF 5/8" TYPE "X" DRYWALL FOR 1 HOUR FIRE RATING, 2 LAYERS FOR 2 HOUR

HW-D-0551 1 HR. STANDARD WALL, CENTERED DIRECTLY UNDER BEAM



*NOTE: SINGLE LAYER OF 5/8" TYPE "X" DRYWALL FOR 1 HOUR FIRE RATING, 2 LAYERS FOR 2 HOUR

NOTE: 1/2" wide joints require no joint compound over HOTROD