



Product Description

MarinoWARE HOTROD® Type-X is a compressible intumescent fire-rated deflection bead tested to UL 2079. It provides 1 & 2 hour joint firestop solutions in joints both standard wall and shaft wall types between flat concrete or fluted metal deck applications.

- 🔴 Tested with up to 80% compression and 33% extension.
- 🔴 Installed at fluted deck does not require use of additional firestop sealant or spray over mineral wool flute fillers.
- 🔴 Has a rectangular profile and is easily installed by compressing it into the gap between the drywall and surrounding structure.
- 🔴 Red in color for easy identification during inspection process.
- 🔴 Non-hygroscopic therefore it will not absorb water.
- 🔴 Provides BOTH fire and sound ratings and over time it does not shrink, harden, or separate from surrounding substrate.
- 🔴 Can be installed and left exposed or covered with tape and joint compound in exposed applications.
- 🔴 Optional double-sided tape for easy installation to the track or stud flange.
- 🔴 For use in assemblies with STC Ratings up to 68.

Ordering / Packaging

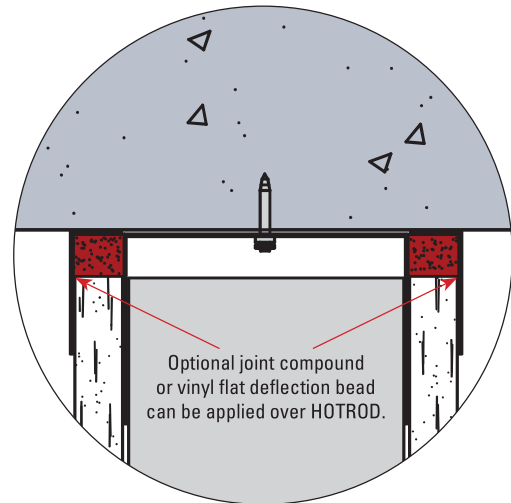
Description	Part #	Length	Pcs/Ctn	Submitted for Review/Use	✓
HOTROD Type-X (w Double-Sided Tape)	HOTRX121DS	40'	5 pcs / 200 ft	HOTRX121DS	
HOTROD Type-X (w/o Double-Sided Tape)	HOTRX121	40'	5 pcs / 200 ft	HOTRX121	
HOTROD Type-X (w Double-Sided Tape)	HOTRX11DS	20'	4 pcs / 80 ft	HOTRX11DS	
HOTROD Type-X (w/o Double-Sided Tape)	HOTRX11	20'	4 pcs / 80 ft	HOTRX11	

Storage / Warranty

- 🔴 When stored indoors and kept dry in the original package, HOTROD Type-X will provide unlimited shelf life.
- 🔴 See Firestop Product Warranty for details.

ASTM & Code Standards

- 🔴 ASTM E-84
- 🔴 ASTM E-90
- 🔴 ASTM E-1966
- 🔴 UL 2079 5th Edition
- 🔴 Cal State Fire (BML) 1451-2376:0003
- 🔴 L-Rating (air leakage) testing for compliance with International Building Code (IBC) and Canadian Building Code (CBC).
- 🔴 UL listings/approvals include: BW-S-0024, HW-D-0514, HW-D-0518, HW-D-0524, HW-D-0525, HW-D-0550, HW-D-0551, HW-D-0553, HW-D-0554, HW-D-0573, HW-D-0620, HW-D-0624, HW-D-0625, HW-D-0652, HW-S-0128, WW-D-0104, WW-S-0057, WW-S-0094
- 🔴 **U.S. Patent No. 9,683,364; 10,184,246; and 11,060,283**

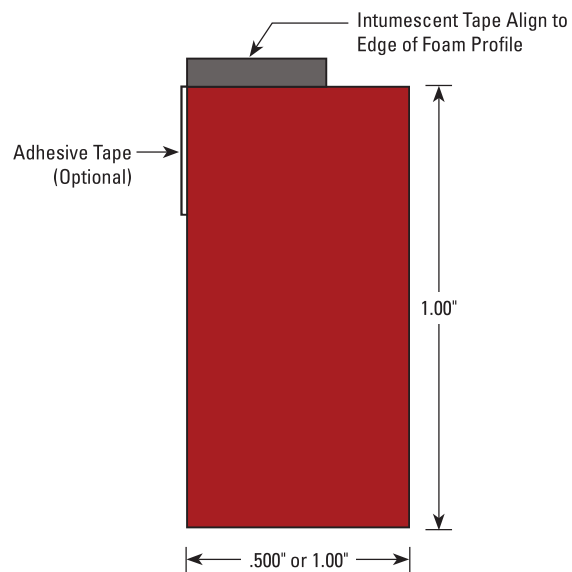
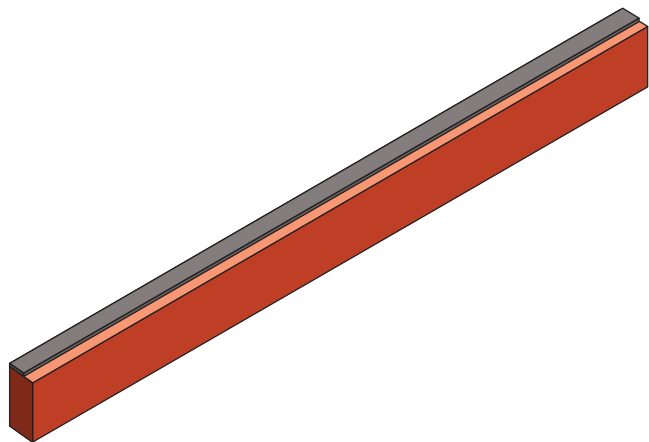


Always check UL Fire resistance directory for complete design requirements.

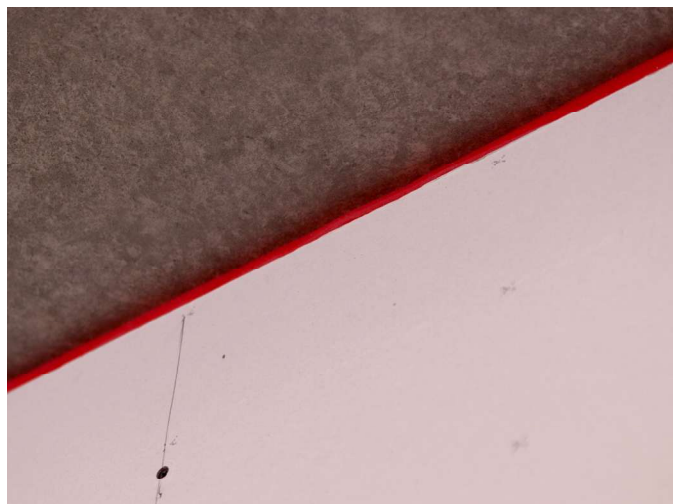
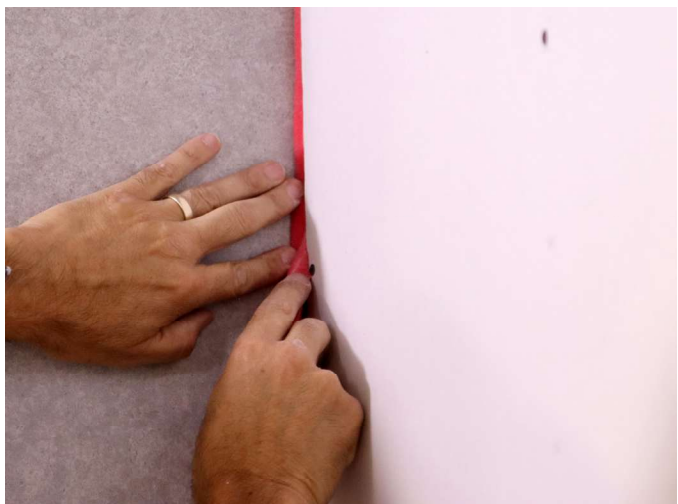
For more information, please contact MarinoWARE® Technical Services at 866.545.1545

This technical information reflects the most current information available and supersedes any and all previous publications effective

July 18, 2025 | MW_Firestop_Catalog | ©WARE Industries, Inc. 2025



← View the installation video!

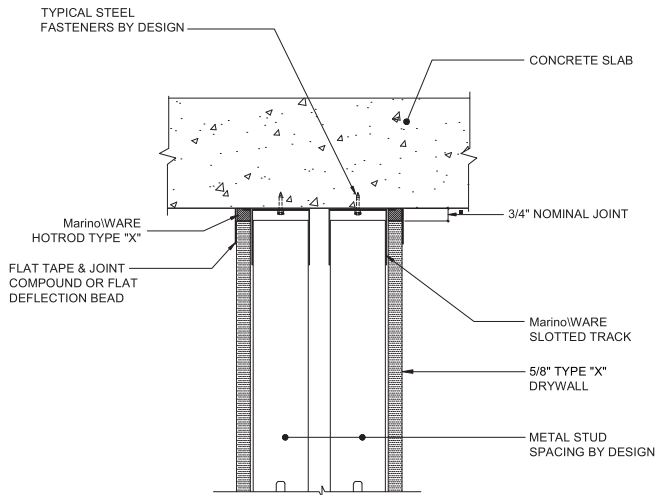


Always check UL Fire resistance directory for complete design requirements.

For more information, please contact MarinoWARE® Technical Services at 866.545.1545

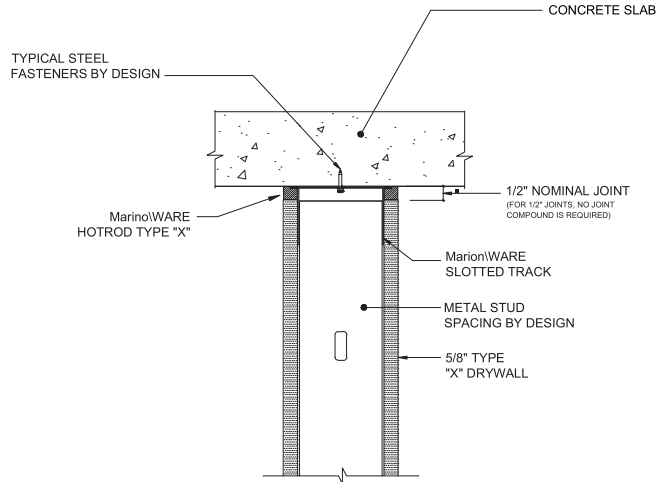
This technical information reflects the most current information available and supersedes any and all previous publications effective July 18, 2025 | MW_Firestop_Catalog | ©WARE Industries, Inc. 2025

HW-D-0554 1 & 2HR STANDARD CHASE WALL, CONCRETE SLAB



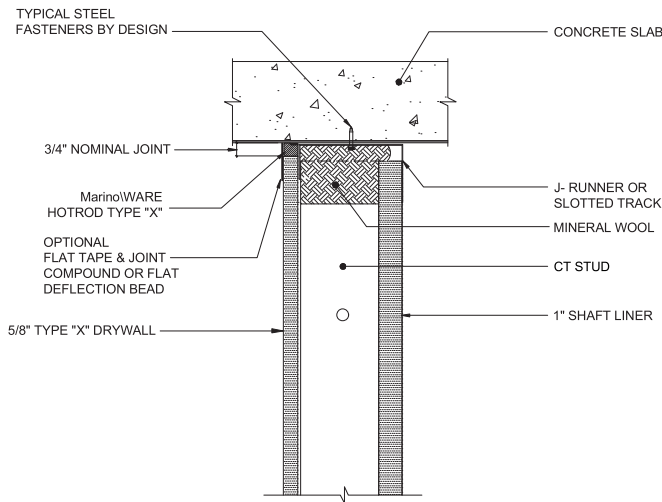
*NOTE: SINGLE LAYER OF 5/8" TYPE "X" DRYWALL FOR 1 HOUR FIRE RATING, 2 LAYERS FOR 2 HOUR

HW-D-0624 1 & 2HR STANDARD WALL, CONCRETE SLAB



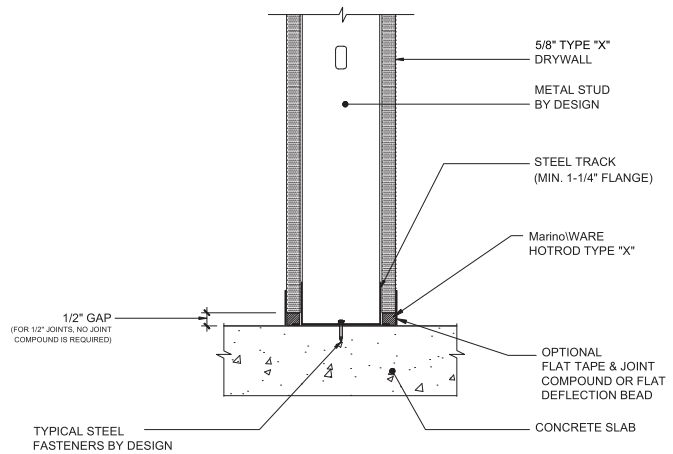
*NOTE: SINGLE LAYER OF 5/8" TYPE "X" DRYWALL FOR 1 HOUR FIRE RATING, 2 LAYERS FOR 2 HOUR

HW-D-0625 1 & 2HR SHAFT WALL, CONCRETE SLAB



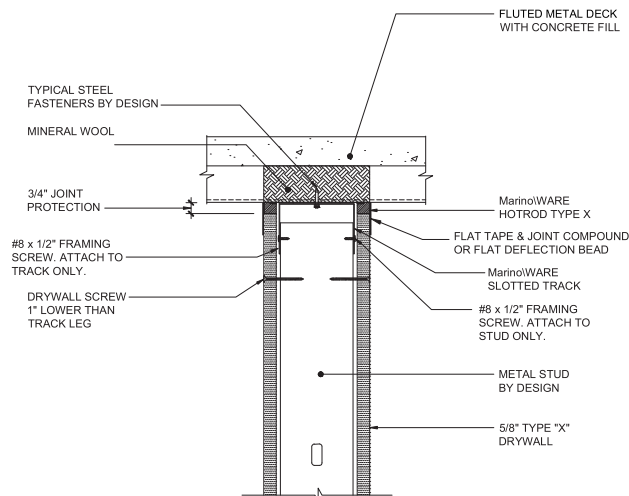
*NOTE: SINGLE LAYER OF 5/8" TYPE "X" DRYWALL FOR 1 HOUR FIRE RATING, 2 LAYERS FOR 2 HOUR

BW-S-0024 1 & 2HR BOTTOM WALL STATIC JOINT



*NOTE: SINGLE LAYER OF 5/8" TYPE "X" DRYWALL FOR 1 HOUR FIRE RATING, 2 LAYERS FOR 2 HOUR

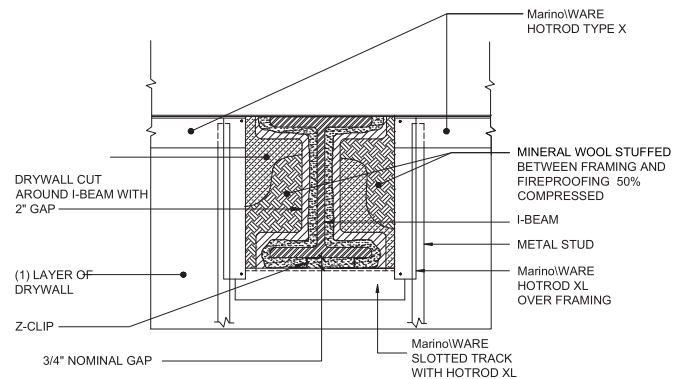
HW-D-0518 1 & 2HR STANDARD WALL, PERPENDICULAR TO FLUTED DECK



*NOTE: SINGLE LAYER OF 5/8" TYPE "X" DRYWALL FOR 1 HOUR FIRE RATING, 2 LAYERS FOR 2 HOUR

NOTE: 1/2" wide joints don't require joint compound over HOTROD

HW-D-0573 1 & 2HR STANDARD WALL, @ FLUTED DECK BEAM PENETRATION



*NOTE: SINGLE LAYER OF 5/8" TYPE "X" DRYWALL FOR 1 HOUR FIRE RATING, 2 LAYERS FOR 2 HOUR

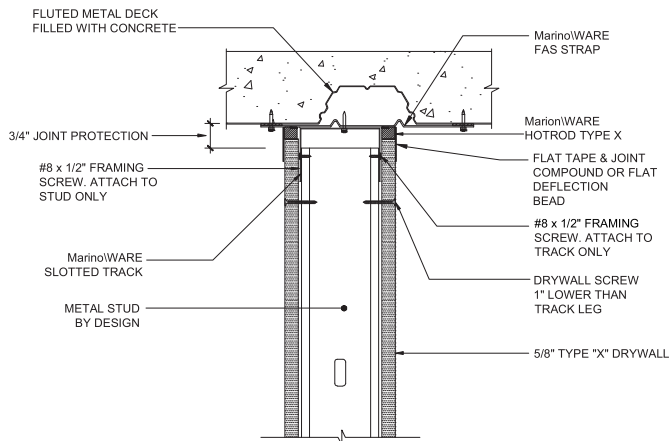
Always check UL Fire resistance directory for complete design requirements.

For more information, please contact MarinoWARE® Technical Services at 866.545.1545

This technical information reflects the most current information available and supersedes any and all previous publications effective

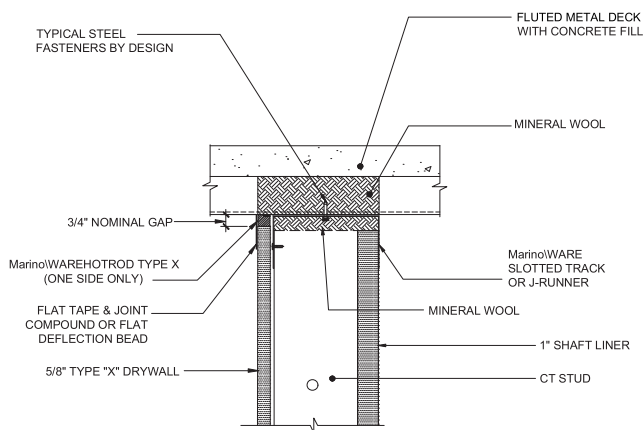
July 18, 2025 | MW_Firestop_Catalog | ©WARE Industries, Inc. 2025

HW-D-0524 1 & 2HR OFFSET & PARALLEL UNDER FLUTED DECK



*NOTE: SINGLE LAYER OF 5/8" TYPE "X" DRYWALL FOR 1 HOUR FIRE RATING, 2 LAYERS FOR 2 HOUR

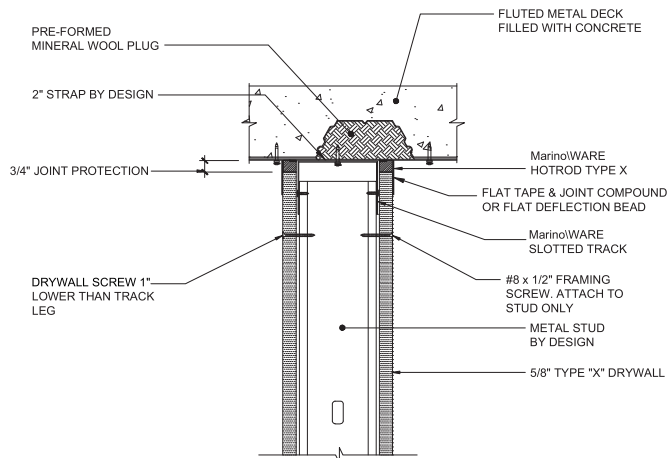
HW-D-0525 1 & 2HR SHAFT WALL, PERPENDICULAR TO FLUTED DECK



*NOTE: SINGLE LAYER OF 5/8" TYPE "X" DRYWALL FOR 1 HOUR FIRE RATING, 2 LAYERS FOR 2 HOUR

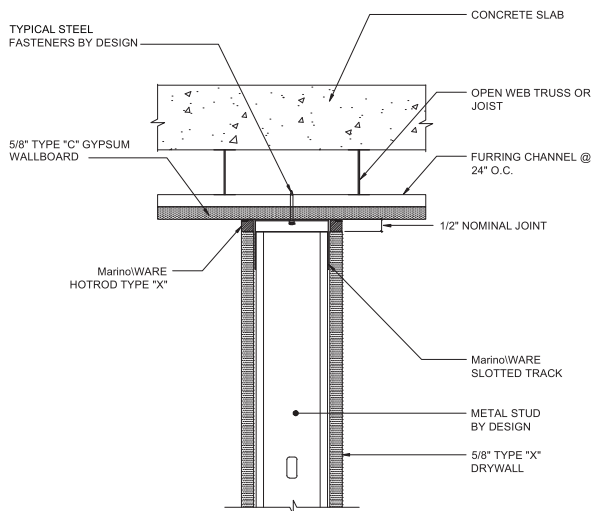
NOTE: 1/2" wide joints don't require joint compound over HOTROD

HW-D-0524 1 & 2HR OFFSET & PARALLEL UNDER FLUTED DECK



*NOTE: SINGLE LAYER OF 5/8" TYPE "X" DRYWALL FOR 1 HOUR FIRE RATING, 2 LAYERS FOR 2 HOUR

HW-D-0550 STANDARD WALL, GYPSUM WALLBOARD CEILING



*NOTE: SINGLE LAYER OF 5/8" TYPE "X" DRYWALL FOR 1 HOUR FIRE RATING, 2 LAYERS FOR 2 HOUR

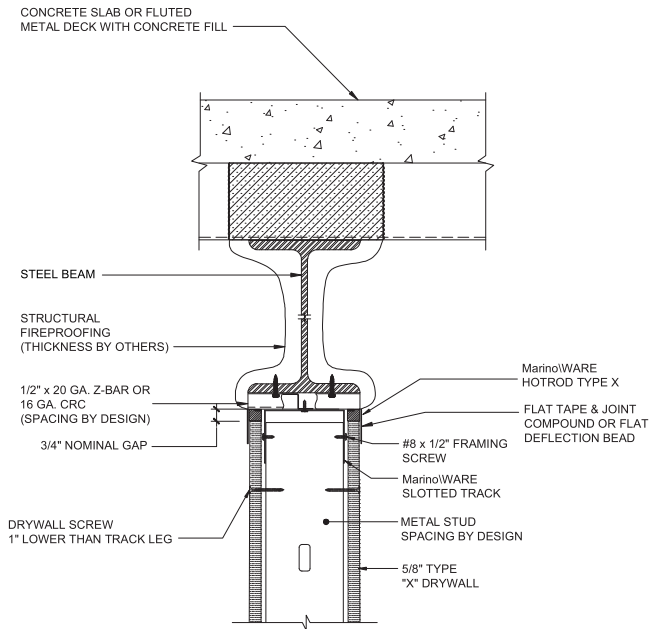
Always check UL Fire resistance directory for complete design requirements.

For more information, please contact MarinoWARE® Technical Services at 866.545.1545

This technical information reflects the most current information available and supersedes any and all previous publications effective

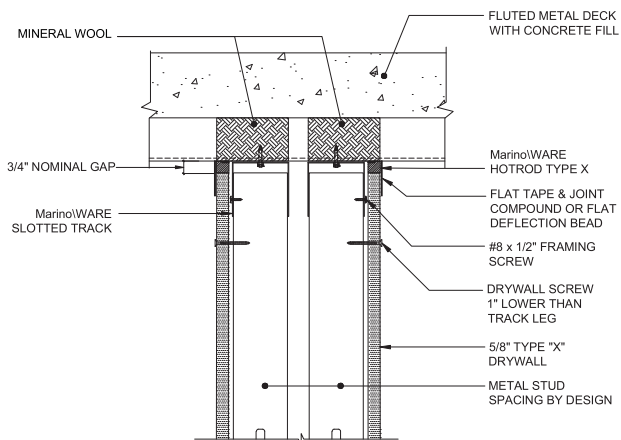
July 18, 2025 | MW_Firestop_Catalog | ©WARE Industries, Inc. 2025

HW-D-0551 1 & 2HR PARALLEL & CENTERED DIRECTLY UNDER BEAM



*NOTE: SINGLE LAYER OF 5/8" TYPE "X" DRYWALL FOR 1 HOUR FIRE RATING, 2 LAYERS FOR 2 HOUR

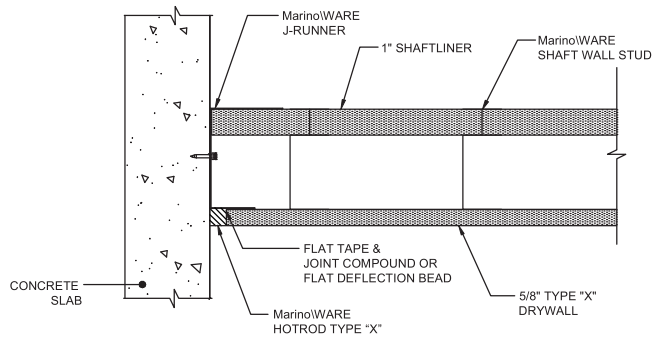
HW-D-0553 1 & 2HR CHASE WALL, PERPENDICULAR TO FLUTED DECK



*NOTE: SINGLE LAYER OF 5/8" TYPE "X" DRYWALL FOR 1 HOUR FIRE RATING, 2 LAYERS FOR 2 HOUR

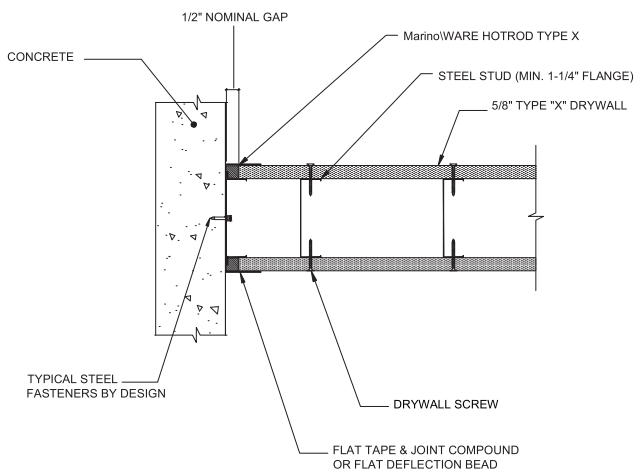
NOTE: 1/2" wide joints don't require joint compound over HOTROD

WW-S-0094 SHAFT WALL VERTICAL JOINT



*NOTE: SINGLE LAYER OF 5/8" TYPE "X" DRYWALL FOR 1 HOUR FIRE RATING, 2 LAYERS FOR 2 HOUR

WW-D-0104 1 & 2HR VERTICAL TIE IN TO CONCRETE SLAB



*NOTE: SINGLE LAYER OF 5/8" TYPE "X" DRYWALL FOR 1 HOUR FIRE RATING, 2 LAYERS FOR 2 HOUR

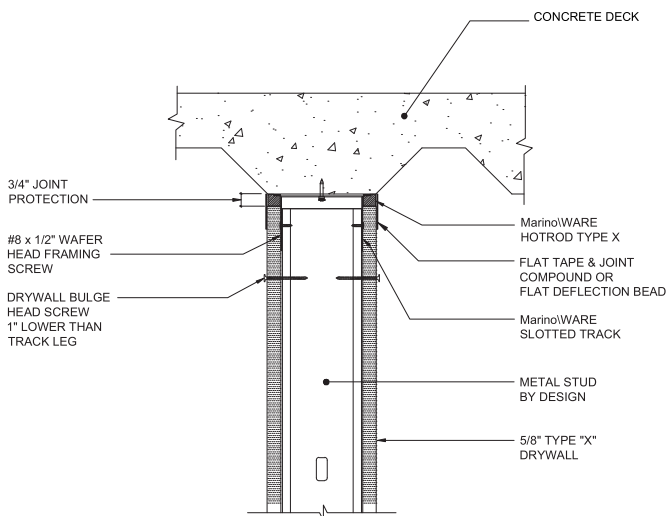
Always check UL Fire resistance directory for complete design requirements.

For more information, please contact MarinoWARE® Technical Services at 866.545.1545

This technical information reflects the most current information available and supersedes any and all previous publications effective

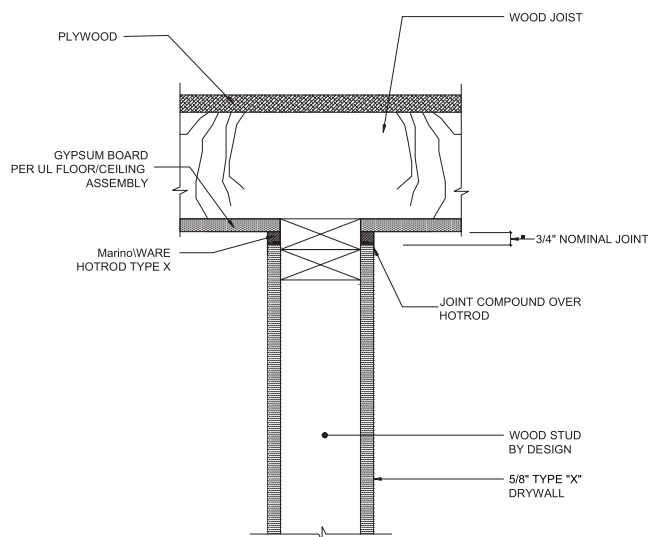
July 18, 2025 | MW_Firestop_Catalog | ©WARE Industries, Inc. 2025

HW-D-0620, 1 & 2HR PARALLEL & DIRECTLY UNDER FLUTED DECK



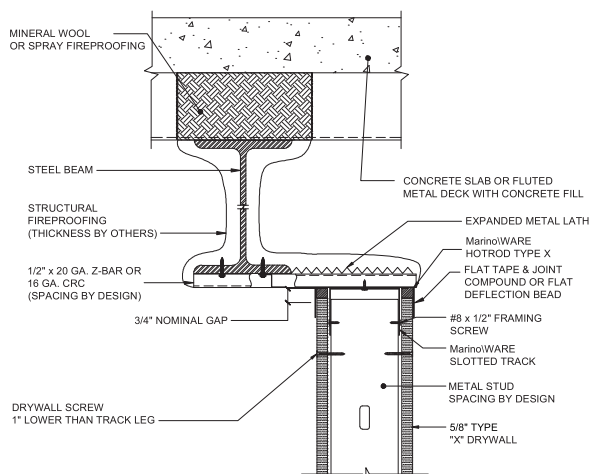
*NOTE: SINGLE LAYER OF 5/8" TYPE "X" DRYWALL FOR 1 HOUR FIRE RATING, 2 LAYERS FOR 2 HOUR

HW-S-0128 1 & 2HR HEAD OF WALL JOINT AT WOOD FRAMING



*NOTE: SINGLE LAYER OF 5/8" TYPE "X" DRYWALL FOR 1 HOUR FIRE RATING, 2 LAYERS FOR 2 HOUR

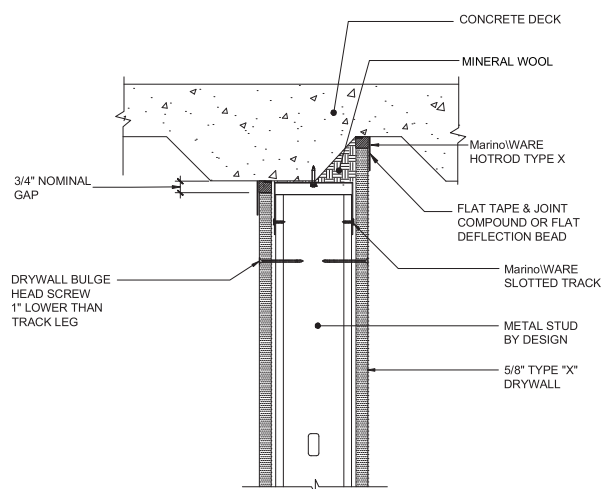
HW-D-0652 1 & 2HR PARALLEL & CANTILEVERED UNDER BEAM



*NOTE: SINGLE LAYER OF 5/8" TYPE "X" DRYWALL FOR 1 HOUR FIRE RATING, 2 LAYERS FOR 2 HOUR

NOTE: 1/2" wide joints don't require joint compound over HOTROD

HW-D-0620, 1 & 2HR PARALLEL & OFFSET UNDER FLUTED DECK



*NOTE: SINGLE LAYER OF 5/8" TYPE "X" DRYWALL FOR 1 HOUR FIRE RATING, 2 LAYERS FOR 2 HOUR

Always check UL Fire resistance directory for complete design requirements.

For more information, please contact MarinoWARE® Technical Services at 866.545.1545

This technical information reflects the most current information available and supersedes any and all previous publications effective

July 18, 2025 | MW_Firestop_Catalog | ©WARE Industries, Inc. 2025