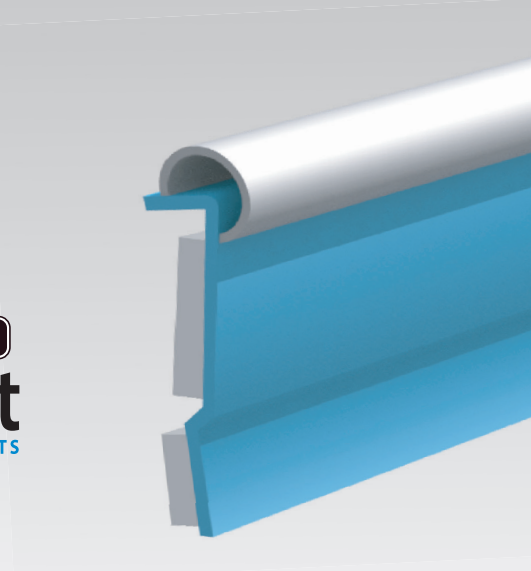
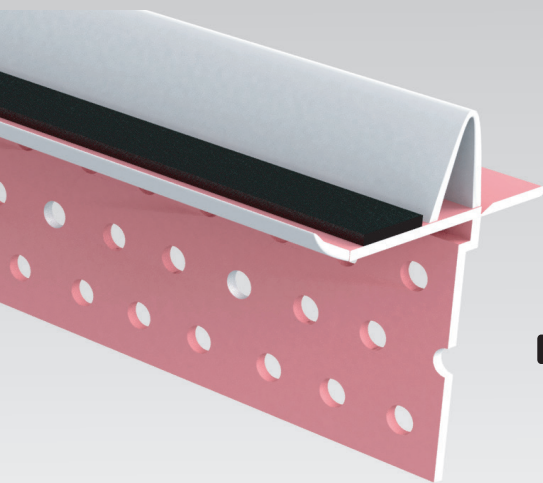
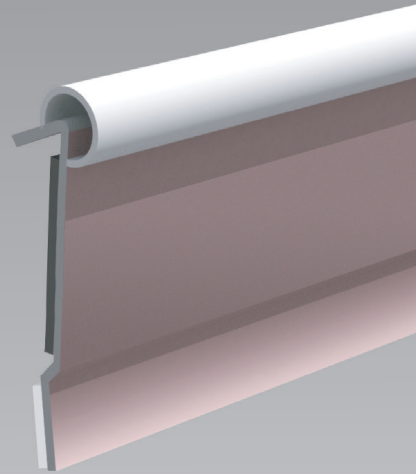
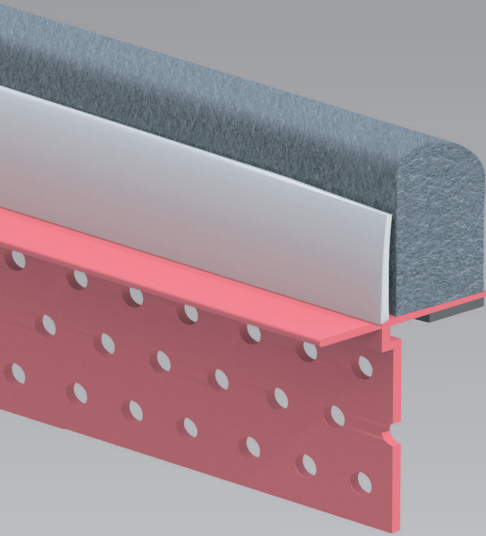
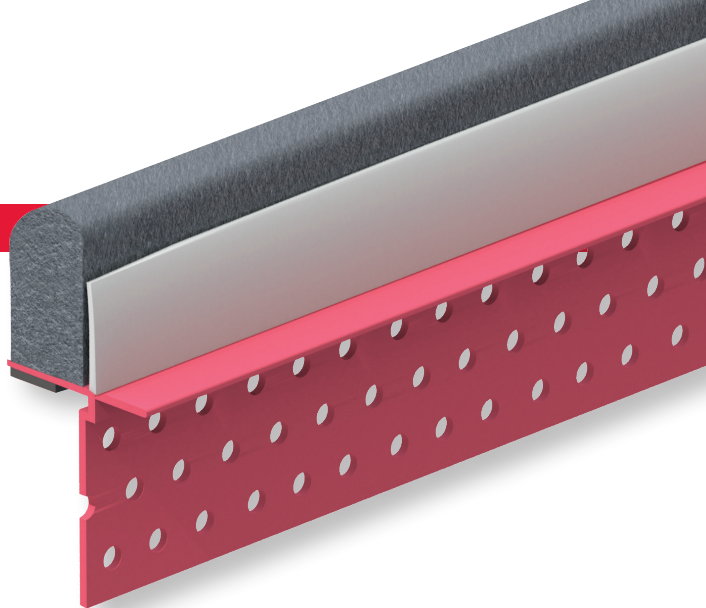


FIRE & SOUND Installation Guide





HOTROD® XL

HOTROD® XL is a powerful and versatile fire rated drywall accessory, built to slam the brakes on the passage of smoke, fire and sound. This solution combines a Flat Deflection Bead with compressible foam and intumescent tape for a perfect seal along head-of-wall joints, providing a full 3/4" of building movement.

Installation Guide

Before Installation:

Install drywall no more than 3/4" down from concrete or adjoining structure.

Step 1:

Measure and cut bead to length.

Step 2:

Apply one coat of 847 Spray Adhesive to both the bead and the drywall.

Step 3:

Angle the bead into place and then flatten mud leg against wall while ensuring that the flexible gasket is touching the ceiling/adjacent structure and is slightly compressed. Do not over-compress the flexible gasket or compressible foam.

Step 4:

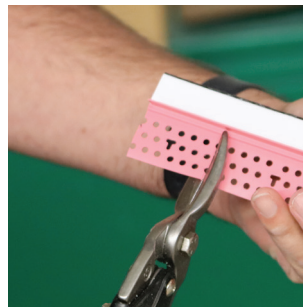
Staple the mud leg with 1/2" staples every 6-8 inches. Apply joint compound, and prior to final sanding, remove the tear-off strip for a clean finish.

Notes:

- To keep the drywall gap consistent, use an appropriately sized spacer on top of drywall.
- There should be no gaps left in joints between pieces. Additional sealant may be used at butt joint to ensure seamless joints.



Step 1:



Step 2:



Step 3:



Step 4:



Snipped Outside Corners:

Step 1:

Snip through the product's mud leg, mud bump and tear off strip. Do not snip the flexible gasket.

Step 2:

Snip out a 45° triangular section of the product's mud leg on either side of the cut.

Step 3:

Turn the product over. Pull away the compressible foam from the product's return leg and snip out a 45° triangular section of the return leg, intumescent tape, and foam gasket, making sure to align its apex with the previous cut from Step 2.

Step 4:

After completing the required snips, the product should easily bend to form a 90° corner. Ensure no gaps in the intumescent tape.

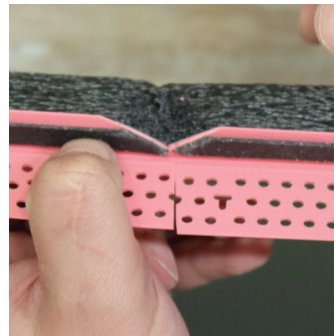
Step 1:



Step 2:



Step 3:



Step 4:



Snipped Inside Corners:

Step 1:

Remove 1" of the tear off strip on the first bead.

Step 2:

Install bead as directed.

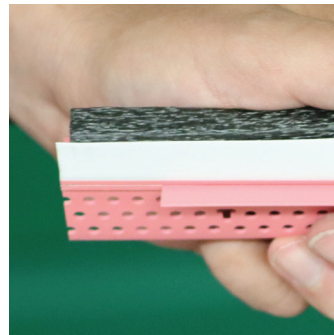
Step 3:

Butt second bead into first, forming a tightly fitting inside corner.

Note:

This technique works to form an inside corner even if installing HOTROD® XL on a rated wall and Flat Deflection Bead on a non-rated wall. Please ensure that the HOTROD® XL runs the full length of the rated wall.

Step 1:



Step 2:



Step 3:



Mitered Inside/Outside Corners:

Step 1:

Use appropriately sized scrap lumber to ensure the product sits flush to the miter fence and perpendicular to the blade.

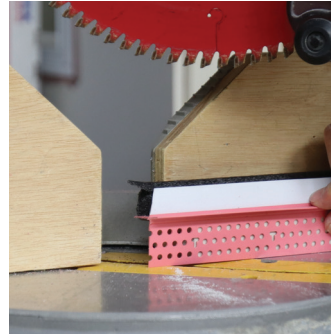
Step 2:

Make 45° cuts, ensuring that product is oriented properly.

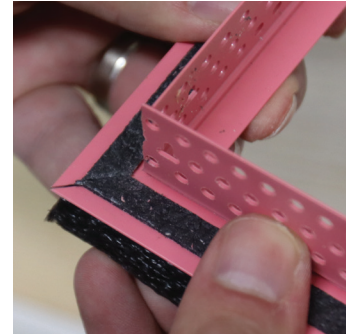
Step 3:

On install, ensure that there are no gaps where intumescent tape meets.

Step 1:



Step 2:



Step 3:



Mitered HOTROD® XL Horizontal to Fire Bead® Vertical Joint:

Step 1:

Use appropriately sized scrap lumber to ensure the product sits flush to the miter fence and perpendicular to the blade.

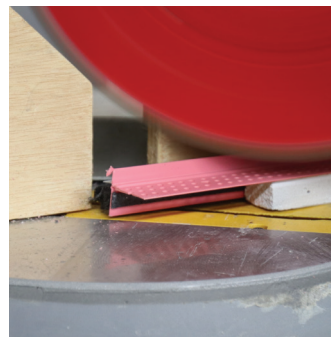
Step 2:

Make 45° cuts, ensuring that product is oriented properly. Snip an additional 1/8" off of the gasket/foam from the HOTROD® XL, in order to ensure the corners are flush.

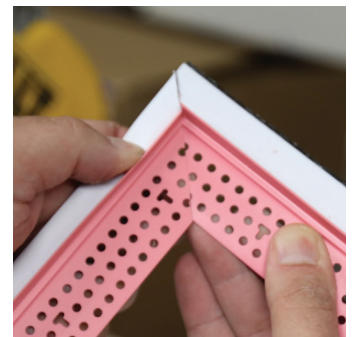
Step 3:

On install, ensure that there are no gaps where intumescent tape meets.

Step 1:



Step 2:



Step 3:



Snipped HOTROD® XL Horizontal to HOTROD® XL Vertical Joint:

Step 1:

Size HOTROD® XL horizontal leg to run wall's full length.

Step 2:

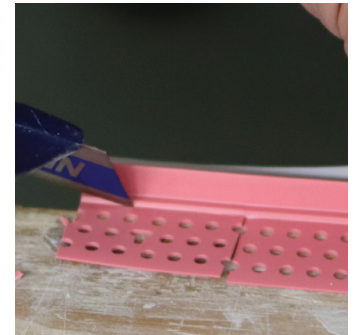
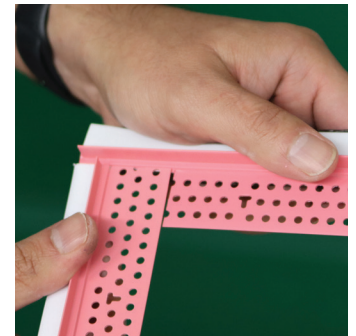
Snip off 1-5/8" of the product's mud leg and mud bump, leaving the flexible gasket, compressible foam and intumescent tape intact.

Step 3:

Remove 1/2" of the tear off strip.

Step 4:

Butt the vertical HOTROD® XL bead into the horizontal HOTROD® XL bead as shown, ensuring there are no gaps where the intumescent tape meets.

Step 1:**Step 2:****Step 3:****Step 4:**

Snipped HOTROD® XL Horizontal to Fire Bead® Vertical Joint:

Step 1:

Size HOTROD® XL horizontal leg to run wall's full length.

Step 2:

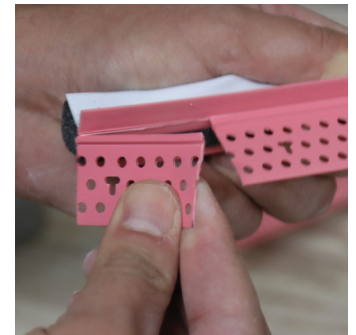
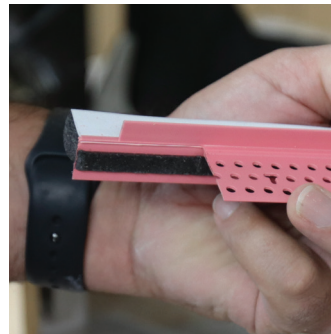
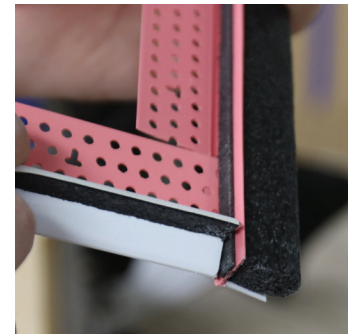
Snip off 1-5/8" of the product's mud leg and mud bump, leaving the bubble gasket, compressible foam and intumescent tape intact.

Step 3:

Remove 1/2" of the tear off strip.

Step 4:

Butt the vertical Fire Bead® into the horizontal HOTROD® XL bead as shown, ensuring there are no gaps where the intumescent tape meets.

Step 1:**Step 2:****Step 3:****Step 4:**



Fire Bead®

Fast, simple and cost-effective, Fire Bead® is the new go-to standard for firestopping in wall joints. Available in 1- and 2-hour fire ratings, Fire Bead® provides protection for up to 1/4" of building deflection with cutting-edge firestopping technology to halt the passage of smoke, fire and sound.

Installation Guide

Before Installation:

Install drywall and leave a 1/2" gap between ceiling/ adjacent structure and drywall.

Step 1:

Measure and cut bead to length.

Step 2:

Apply one coat of 847 Spray Adhesive to both the bead and the drywall.

Step 3:

Pressure the bead into place while ensuring that the bubble gasket is touching the ceiling/adjacent structure and is slightly compressed. Do not over compress the bubble gasket.

Step 4:

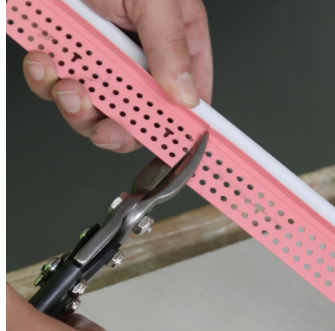
Staple the mud leg with 1/2" staples every 6-8 inches. Apply joint compound, and prior to final sanding, remove the tear-off strip for a clean finish.

Note:

There should be no gaps left in joints between pieces. Additional sealant may be used at butt joint to ensure seamless joints.



Step 1:



Step 2:



Step 3:



Step 4:



Snipped Outside Corners:

Step 1:

Snip through the product's mud leg, mud bump and tear off strip. Do not snip the bubble gasket.

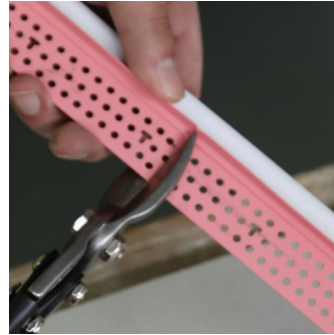
Step 2:

Turn the product over. Snip out a triangular section of its return leg and intumescent strip. The triangle's apex should align with the first cut and be slightly under the bubble gasket.

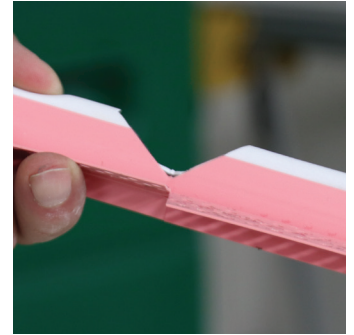
Step 3:

After completing the required snips, the product should easily bend to form a 90° corner. On install, ensure no gaps in the intumescent tape.

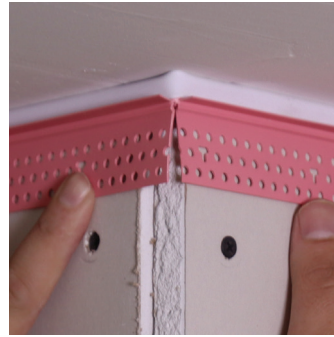
Step 1:



Step 2:



Step 3:



Snipped Inside Corners:

Step 1:

Create the first corner piece by snipping off 3/4" of the product's mud leg, mud bump, tear off strip and bubble gasket, leaving intact the return leg and intumescent tape.

Step 2:

Remove 1/2" of the tear off strip on the second piece to complete the corner.

Step 3:

The two pieces can then be butted into a tightly fitting inside corner.

Note:

This technique works to form an inside corner even if installing Fire Bead® on one wall and non-rated Deflection Bead on the other. Please ensure that the Fire Bead® intumescent tape runs the full length of the rated wall.

Step 1:



Step 2:



Step 3:



Mitered Inside/Outside Corners:

Step 1:

Use appropriately sized scrap lumber to ensure the product sits flush to the miter fence and perpendicular to the blade.

Step 2:

Make 45° cuts, ensuring that product is oriented properly.

Step 3:

On install, ensure that there are no gaps where intumescent tape meets.

Step 1:



Step 2:



Step 3:



Mitered Horizontal to Vertical Joint:

Step 1:

Use appropriately sized scrap lumber to ensure the product sits flush to the miter fence and perpendicular to the blade.

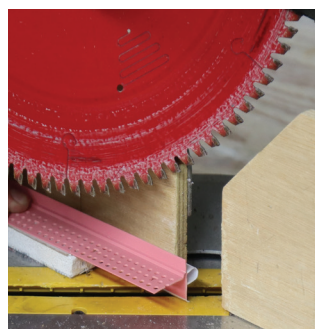
Step 2:

Make 45° cuts, ensuring that product is oriented properly.

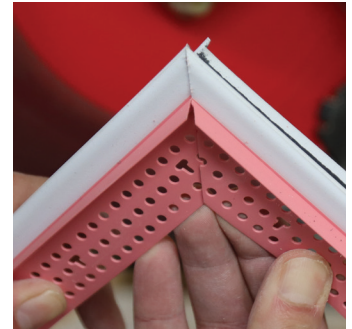
Step 3:

On install, ensure that there are no gaps where intumescent tape meets.

Step 1:



Step 2:



Step 3:



Snipped Horizontal to Vertical Joint:

Step 1:

Size horizontal leg to run wall's full length.

Step 2:

Snip off 1-5/8" of the product's mud leg and mud bump, leaving the bubble gasket, return leg and intumescent tape intact.

Step 3:

Remove 1/2" of the tear off strip.

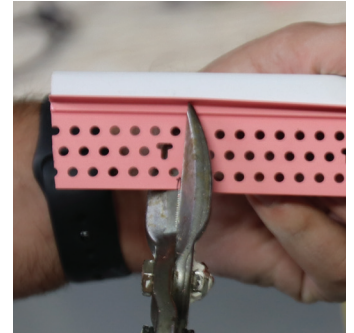
Step 4:

Butt the vertical bead into the horizontal bead as shown, ensuring there are no gaps where the intumescent tape meets.

Step 1:



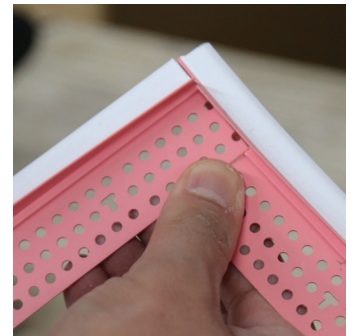
Step 2:



Step 3:



Step 4:



Fire Gasket®

Fire Gasket® is the fastest firestopping solution for head-of-wall joints on the market, installing up to three times faster than traditional sealants and sprays. Fire Gasket® is installed pre-drywall, and is available in three different sizes to provide a range of unencumbered movement — 0.5", 1" and 1.5".

Installation Guide

Before Installation:

Install Fire Gasket® to the wall framing before hanging drywall.

Step 1:

Measure and cut to length.

Step 2:

Remove backing on adhesive foam tape.

Step 3:

Compress the bubble gasket firmly against the adjoining structure. Pressure the product into place while adhering it to the framing.

Step 4:

Install drywall directly over Fire Gasket® per the deflection requirement allowed by the required UL joint system reports.

Notes:

- To keep the drywall gap consistent, use an appropriately sized spacer on top of drywall.
- If desired, finish top of drywall with L Bead or Tear Away L Bead.
- Fire Gasket® can optionally be fastened to the framing using appropriate 1/2" screws through the adhesive foam on its lower leg.
- There should be no gaps left in joints between pieces. Additional sealant may be used at butt joint to ensure seamless joints.



Step 1:



Step 2:



Step 3:



Step 4:



Snipped Inside/Outside Corners:

Step 1:

Snip the small return leg at top/back just under the bubble gasket. Do not snip through the bubble gasket.

Step 2:

Snip 1/8" on the bottom of the Fire Gasket®.

Step 3:

Lightly score the intumescent and foam tapes with utility knife to keep it from ripping when bent. Do not cut all the way through the tapes.

Step 4:

Bend Fire Gasket® to meet the inside or outside corner and fasten into place with the foam tape and optionally with 1/2" framing screws through the lower adhesive area of the bead.

Step 1:



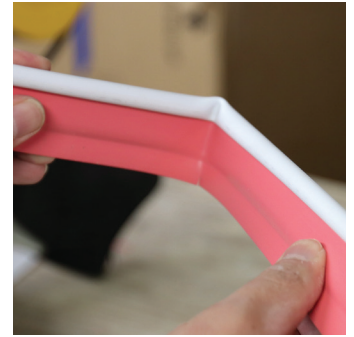
Step 2:



Step 3:



Step 4:



Snipped Horizontal to Vertical Joint:

Step 1:

Measure horizontal leg to length and snip off a flat 45° triangular section of the product.

Step 2:

Repeat with the vertical leg, and on install, ensure there are no gaps where the intumescent tape meets.

Step 1:



Step 2:



Mitered Horizontal to Vertical Joint:

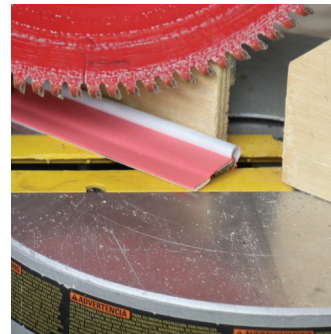
Step 1:

Measure top leg to length. Lay product flat on miter saw and make appropriate 45° cut, ensuring product is oriented properly.

Step 2:

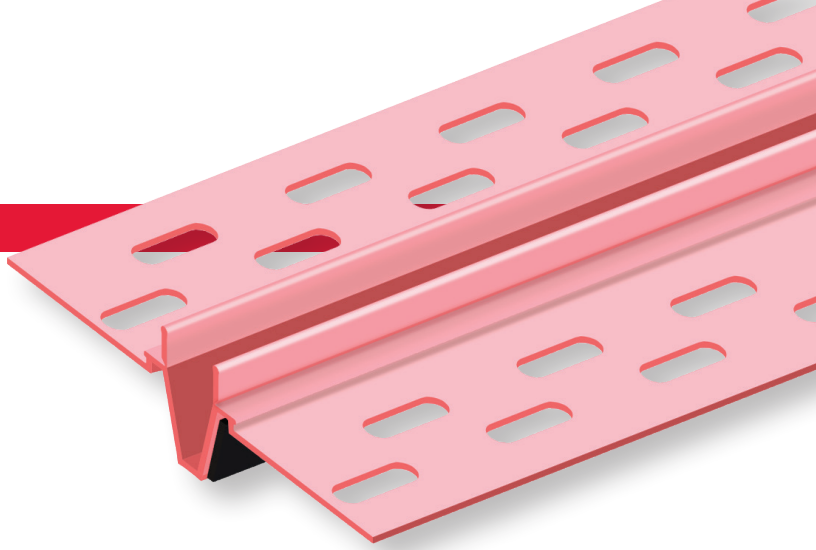
Repeat with vertical leg, and on install, ensure there are no gaps where the intumescent tape meets.

Step 1:



Step 2:





FAS® 093X-V (Vinyl) Fire-Rated Control Joint

Building out fire-rated control joints on wall assemblies using traditional methods is costly and time consuming. FAS 093X-V (Vinyl) Fire-Rated Control Joint revolutionizes this process. Integrated intumescent tape rated for 1 and 2 hours, and the flexible bead accommodates up to 3/8" in building movement.

FAS-093X-V

Installation Guide

Before Installation:

Ensure that the wall is built to outlined specifications for XHBN.WW-D-0172 in the UL directory.

Step 1:

Measure and cut the bead to length. Dry fit to test proper cut.

Step 2:

Spray the bead and edge of drywall with 1 coat each of 847 Spray Adhesive and position the bead into place.

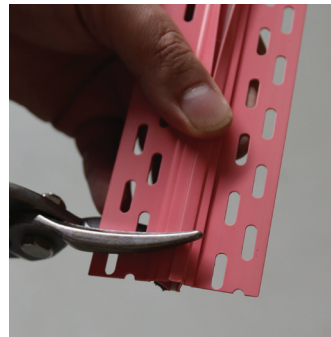
Step 3:

Once in position, pressure the leg using a installation tool or the handle of your taping knife.

Step 4:

Staple the mud leg into place every 6"-8" with 1/2" staples.

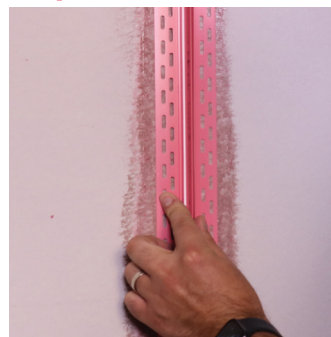
Step 1:



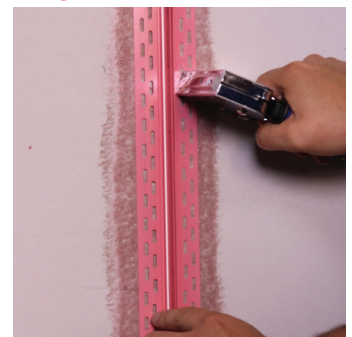
Step 2:



Step 3:

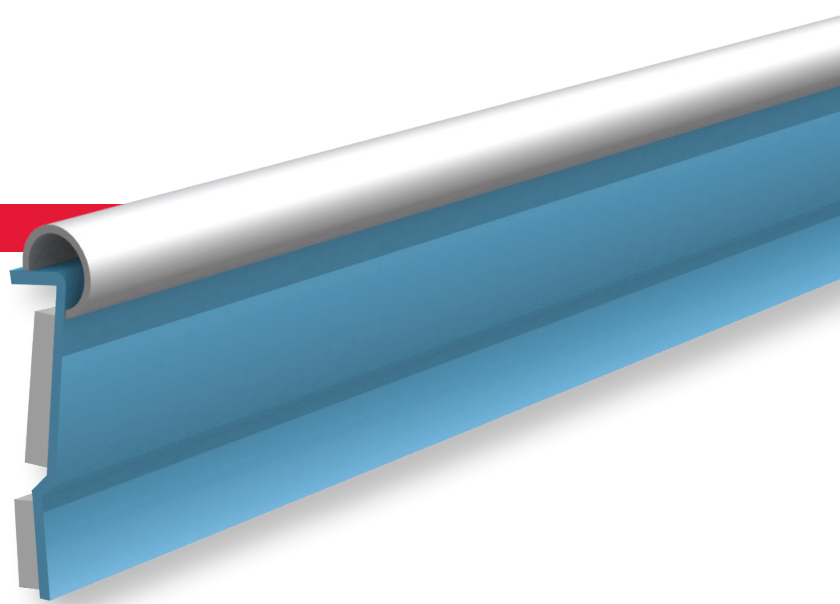


Step 4:



Sound Gasket®

Preventing the passage of noise through head-of-wall joints has never been easier or faster than installing Sound Gasket®. This simple drywall accessory — a vinyl profile, bubble gasket (providing up to 1" of building movement) and sound deadening foam — is the most advanced soundproofing solution for wall joints on the market.



Installation Guide

Before Installation:

Install Sound Gasket® to the wall framing before hanging drywall.

Step 1:

Measure and cut to length.

Step 2:

Remove backing on bottom adhesive foam tape (do not remove tape from top foam tape).

Step 3:

Compress the bubble gasket firmly against the adjoining structure. Pressure the product into place while adhering it to the framing.

Step 4:

Install drywall directly over Sound Gasket® per the deflection requirement.

Notes:

- To keep the drywall gap consistent, use an appropriately sized spacer on top of drywall.
- If desired, finish top of drywall with L Bead or Tear Away L Bead.
- Sound Gasket® can optionally be fastened to the framing using appropriate 1/2" screws through the adhesive foam on its lower leg.
- There should be no gaps left in joints between pieces. Additional sealant may be used at butt joint to ensure seamless joints.



Step 1:



Step 2:



Step 3:



Step 4:



Snipped Inside/Outside Corners:

Step 1:
Snip the small return leg at top/back just under the bubble gasket. Do not snip through the bubble gasket.

Step 2:
Snip 1/8" on the bottom of the Sound Gasket®.

Step 3:
Lightly score the foam tapes with utility knife to keep them from ripping when bent. Do not cut all the way through the tapes.

Step 4:
Bend Sound Gasket to meet the inside or outside corner and fasten into place with the foam tape.

Step 1:



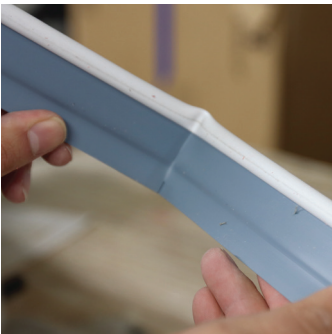
Step 2:



Step 3:



Step 4:



Snipped Horizontal to Vertical Joint:

Step 1:
Measure horizontal leg to length and snip off a flat 45° triangular section of the product.

Step 2:
Repeat with the vertical leg, and on install, ensure there are no gaps where the legs meet.

Step 1:



Step 2:

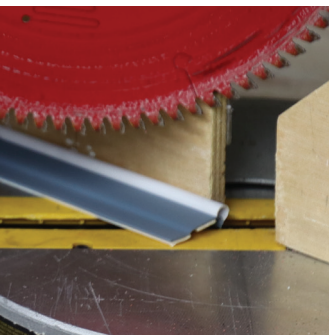


Mitered Horizontal to Vertical Joint:

Step 1:
Measure top leg to length. Lay product flat on miter saw and make appropriate 45° cut, ensuring product is oriented properly.

Step 2:
Repeat with vertical leg, and on install, ensure there are no gaps where the legs meet.






Step 1:








Step 2:



MARINO WARE®

Product	Movement	Standard Wall	Shaft Wall	Fluted Deck	Concrete Deck	Installation	Paintable	Sound Test
 Fire Bead <small>FIRE RATED DEFLECTION BEAD</small>	1/4" Comp Only	✓	✓		✓	Post Drywall	✓	✓
 Fire Gasket <small>FIRESTOPPING FOR BUILDING JOINTS</small>	FG .5: 1/2" Overall FG 1: 1" Overall FG 1.5: 1-1/2" Overall	✓	✓	✓	✓	Pre Drywall	✓	✓
 HOTROD TYPEX <small>FIRESTOPPING FOR BUILDING JOINTS</small>	1/2" Comp 1/4" Ext	✓	✓	✓	✓	Post/Pre Drywall	✓	✓
 HOTROD XL <small>FIRESTOPPING FOR BUILDING JOINTS</small>	1/2" Comp 1/4" Ext	✓	✓	✓	✓	Post Drywall	✓	✓
 FireRip™ <small>HIGH DEFLECTION BUILDING JOINT PROTECTION</small>	FR2: 2" Overall FR3: 3" Overall	✓	✓	✓	✓	Post Drywall	✓	
FAS-093X FAS-093X-V	15% of 1/2" Joint Width	✓	✓	✓	✓	Post Drywall	✓	✓

Product	UL / Approvals (UL 2079 5th Edition)
 Fire Bead <small>FIRE RATED DEFLECTION BEAD</small>	HW-D-0624; HW-D-0625; HW-D-0554; HW-D-0550; BW-S-0024; WW-D-0104
 Fire Gasket <small>FIRESTOPPING FOR BUILDING JOINTS</small>	HW-D-0515; HW-D-0514; HW-D-0524; HW-D-0551; HW-D-0550; HW-D-0554; HW-D-0600; HW-D-0620; HW-D-0652; HW-D-0518; HW-D-0553; HW-D-0573 ; HW-D-0623; WW-S-0057; BW-S-0024; WW-D-0104
 HOTROD TYPEX <small>FIRESTOPPING FOR BUILDING JOINTS</small>	HW-D-0624; HW-D-0625; HW-D-0554; HW-D-0550; BW-S-0024; WW-D-0104; WW-S-0057; HW-D-0514; HW-D-0518; HW-D-0524; HW-D-0652; HW-D-0620; HW-D-0573; HW-D-0525; HW-D-0553; HW-D-0621; WW-S-0094
 HOTROD XL <small>FIRESTOPPING FOR BUILDING JOINTS</small>	HW-D-0624; HW-D-0625; HW-D-0554; HW-D-0550; BW-S-0024; WW-D-0104; HW-D-0514; HW-D-0518; HW-D-0524; HW-D-0652; HW-D-0620; HW-D-0573; HW-D-0525; HW-D-0553; HW-D-0621; WW-S-0094
 FireRip™ <small>HIGH DEFLECTION BUILDING JOINT PROTECTION</small>	HW-D-0420; HW-D-0421; HW-D-1096; HW-D-0451; HW-D-0453; HW-D-0461; HW-D-0463; HW-D-0582; HW-D-0584; HW-D-0587; HW-D-0594; HW-D-0602; HW-D-0585
FAS-093X FAS-093X-V	HW-D-0596; HW-D-0621; WW-D-0172

