

Product Description

MarinoWARE HOTROD XL is a surface mounted fire-rated deflection bead tested to UL 2079. It provides 1 & 2 hour firestop solutions in joints for both standard wall and shaft wall types between flat concrete or fluted metal deck applications.



- ☛ Tested with up to 80% compression and 30% extension.
- ☛ Combines compressible foam, a vinyl concealment leg along and intumescent strip to provide an aesthetically pleasing joint.
- ☛ Provides one and two hour fire ratings from the same profile.
- ☛ Provides a single step installation of both a code compliant firestop and finished drywall accessory in one piece.
- ☛ Pink perforated mud leg for ease of inspection.
- ☛ Installs on the face of the drywall with a perforated mud leg incorporated to accept joint compound.
- ☛ Can be used with sprayless Flute Clips to eliminate need for additional firestop sealant or spray.
- ☛ Easily installs using spray adhesive and staples.
- ☛ Installs fully cured and is printable.
- ☛ Does not have temperature or humidity limits for installation.
- ☛ For use in assemblies with STC Ratings up to 68.

Ordering / Packaging

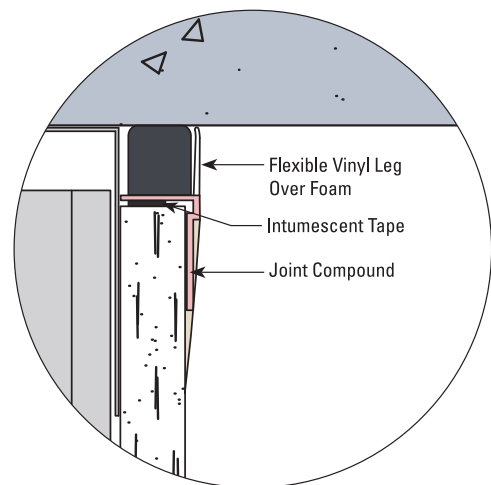
Description	Part #	Size	Length	Pcs/Ctn	Submitted for Review/Use	✓
HOTROD XL	HOTRODXL	1/2" x 3/4"	10'	10	HOTROD XL	

Storage / Warranty

- ☛ When stored indoors and kept dry in the original package, HOTROD XL will provide unlimited shelf life.
- ☛ See Firestop Product Warranty for details.

ASTM & Code Standards

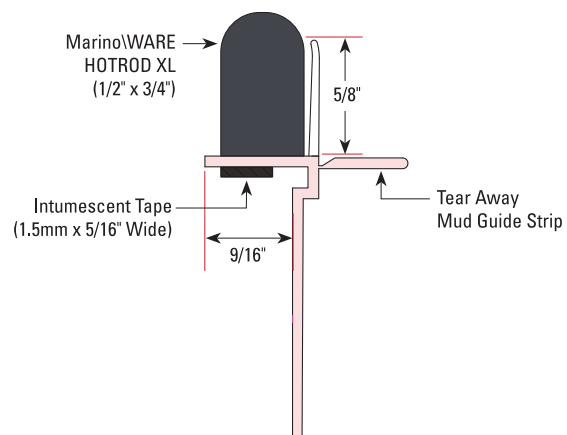
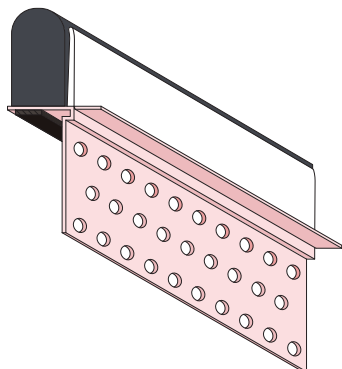
- ☛ ASTM E-84
- ☛ ASTM E-90
- ☛ ASTM E-1966
- ☛ UL 2079 5th Edition
- ☛ L-Rating (air leakage) testing for compliance with International Building Code (IBC) and Canadian Building Code (CBC).
- ☛ UL listings/approvals include: BW-S-0024; HW-D-0550; HW-D-0554; HW-D-0621; HW-D-0624; HW-D-0625; HW-S-0128; WW-S-0057; WW-S-0094
- ☛ **U.S. Patent No. 9,683,364; 10,184,246; and 10,914,065**



Always check UL Fire resistance directory for complete design requirements.

For more information, please contact MarinoWARE® Technical Services at 866.545.1545

This technical information reflects the most current information available and supersedes any and all previous publications effective June 17, 2025 | MW_Firestop_Catalog | ©WARE Industries, Inc. 2025



← View the installation video!



← View the installation guide!



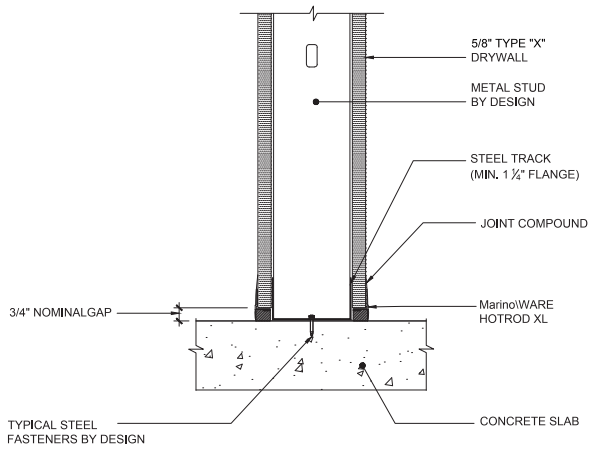
Always check UL Fire resistance directory for complete design requirements.

For more information, please contact MarinoWARE® Technical Services at 866.545.1545

This technical information reflects the most current information available and supersedes any and all previous publications effective

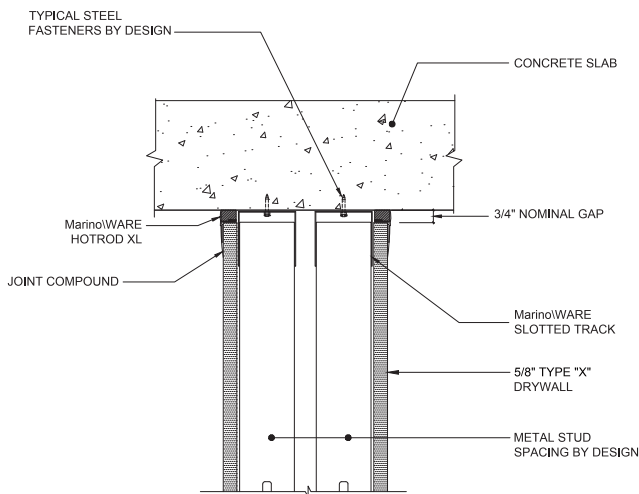
June 17, 2025 | MW_Firestop_Catalog | ©WARE Industries, Inc. 2025

BW-S-0024 1 & 2HR BOTTOM OF WALL



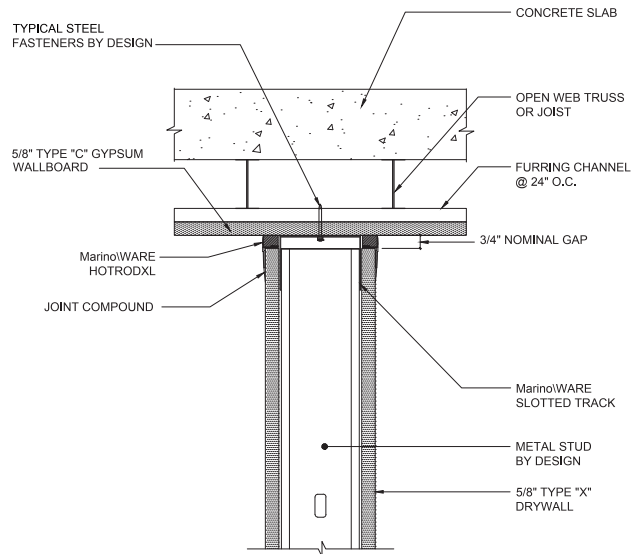
*NOTE: SINGLE LAYER OF 5/8\" TYPE \"X\" DRYWALL FOR 1 HOUR FIRE RATING, 2 LAYERS FOR 2 HOUR

HW-D-0554 1 & 2HR STANDARD CHASE WALL, CONCRETE SLAB



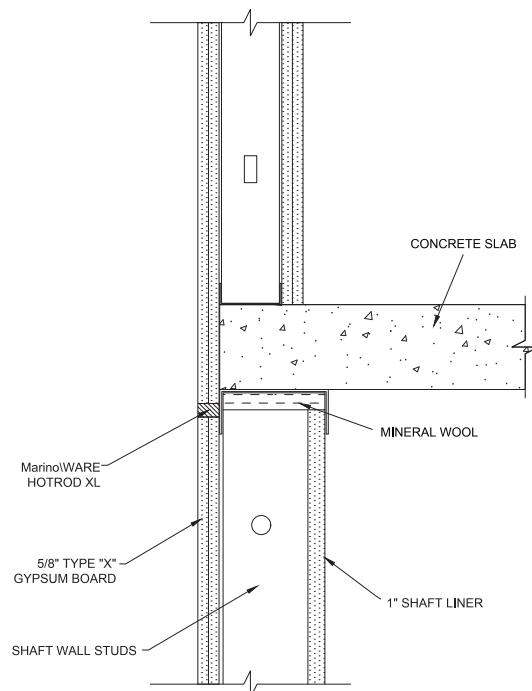
*NOTE: SINGLE LAYER OF 5/8\" TYPE \"X\" DRYWALL FOR 1 HOUR FIRE RATING, 2 LAYERS FOR 2 HOUR

HW-D-0550 1 & 2HR STANDARD WALL, GYPSUM WALLBOARD CEILING



*NOTE: SINGLE LAYER OF 5/8\" TYPE \"X\" DRYWALL FOR 1 HOUR FIRE RATING, 2 LAYERS FOR 2 HOUR

HW-D-0621 1 & 2HR SHAFT WALL CONCRETE SLAB BYPASS



*NOTE: SINGLE LAYER OF 5/8\" TYPE \"X\" DRYWALL FOR 1 HOUR FIRE RATING, 2 LAYERS FOR 2 HOUR

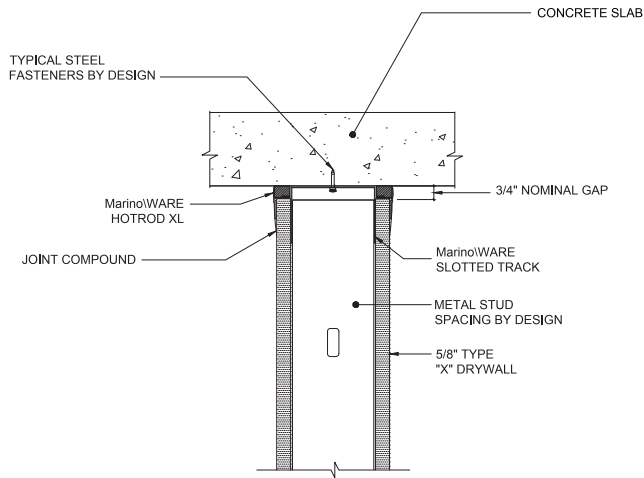
Always check UL Fire resistance directory for complete design requirements.

For more information, please contact MarinoWARE® Technical Services at 866.545.1545

This technical information reflects the most current information available and supersedes any and all previous publications effective

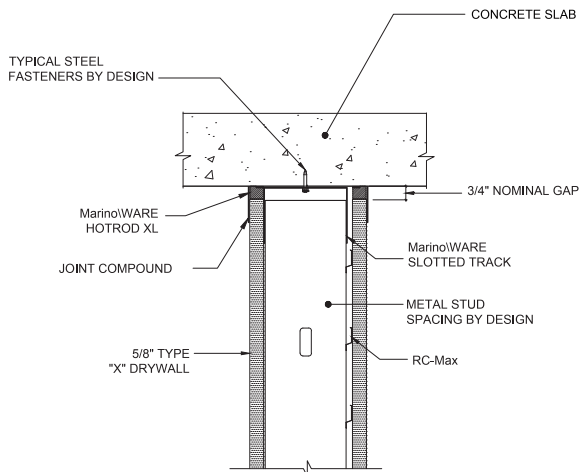
June 17, 2025 | MW_Firestop_Catalog | ©WARE Industries, Inc. 2025

HW-D-0624 1 & 2HR STANDARD WALL, CONCRETE SLAB



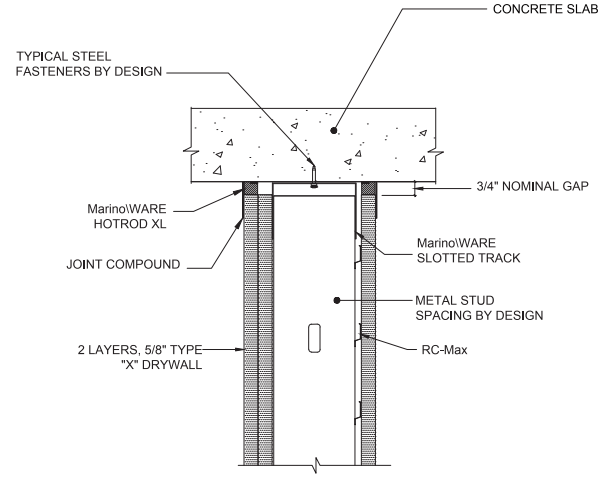
*NOTE: SINGLE LAYER OF 5/8" TYPE "X" DRYWALL FOR 1 HOUR FIRE RATING, 2 LAYERS FOR 2 HOUR

HW-D-0624 1HR STANDARD WALL, CONCRETE SLAB, STC RATING: 52



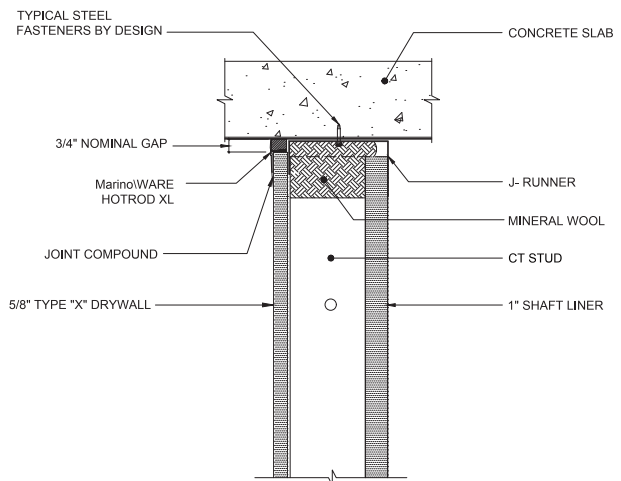
*NOTE: SINGLE LAYER OF 5/8" TYPE "X" DRYWALL FOR 1 HOUR FIRE RATING, 2 LAYERS FOR 2 HOUR

HW-D-0624 1HR STANDARD WALL, CONCRETE SLAB, STC RATING: 55



*NOTE: SINGLE LAYER OF 5/8" TYPE "X" DRYWALL FOR 1 HOUR FIRE RATING, 2 LAYERS FOR 2 HOUR

HW-D-0625 1 & 2HR SHAFT WALL, CONCRETE SLAB



*NOTE: SINGLE LAYER OF 5/8" TYPE "X" DRYWALL FOR 1 HOUR FIRE RATING, 2 LAYERS FOR 2 HOUR

Always check UL Fire resistance directory for complete design requirements.

For more information, please contact MarinoWARE® Technical Services at 866.545.1545

This technical information reflects the most current information available and supersedes any and all previous publications effective

June 17, 2025 | MW_Firestop_Catalog | ©WARE Industries, Inc. 2025