



**Design No. V457
 BXUV.V457
 Fire Resistance Ratings - ANSI/UL 263**

Page Bottom

Design/System/Construction/Assembly Usage Disclaimer

- Authorities Having Jurisdiction should be consulted in all cases as to the particular requirements covering the installation and use of UL Listed or Classified products, equipment, system, devices, and materials.
- Authorities Having Jurisdiction should be consulted before construction.
- Fire resistance assemblies and products are developed by the design submitter and have been investigated by UL for compliance with applicable requirements. The published information cannot always address every construction nuance encountered in the field.
- When field issues arise, it is recommended the first contact for assistance be the technical service staff provided by the product manufacturer noted for the design. Users of fire resistance assemblies are advised to consult the general Guide Information for each product category and each group of assemblies. The Guide Information includes specifics concerning alternate materials and alternate methods of construction.
- Only products which bear UL's Mark are considered as Classified, Listed, or Recognized.

Fire Resistance Ratings - ANSI/UL 263

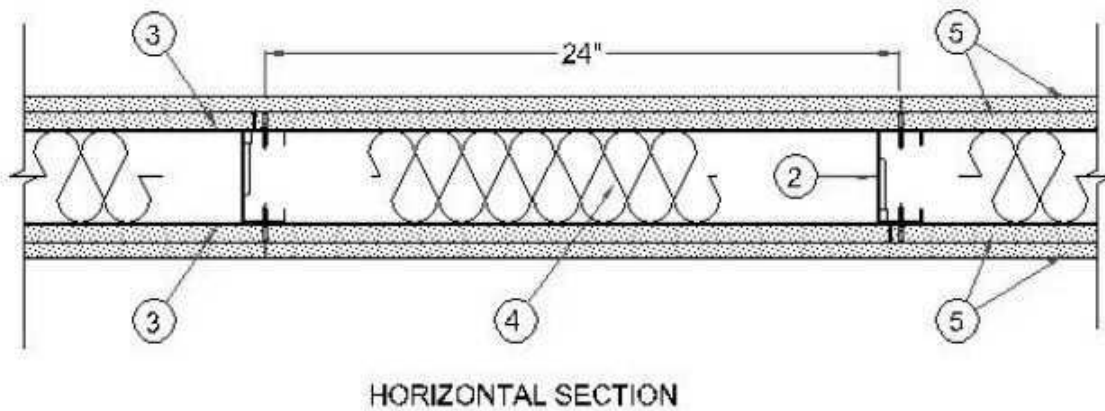
See General Information for Fire Resistance Ratings - ANSI/UL 263

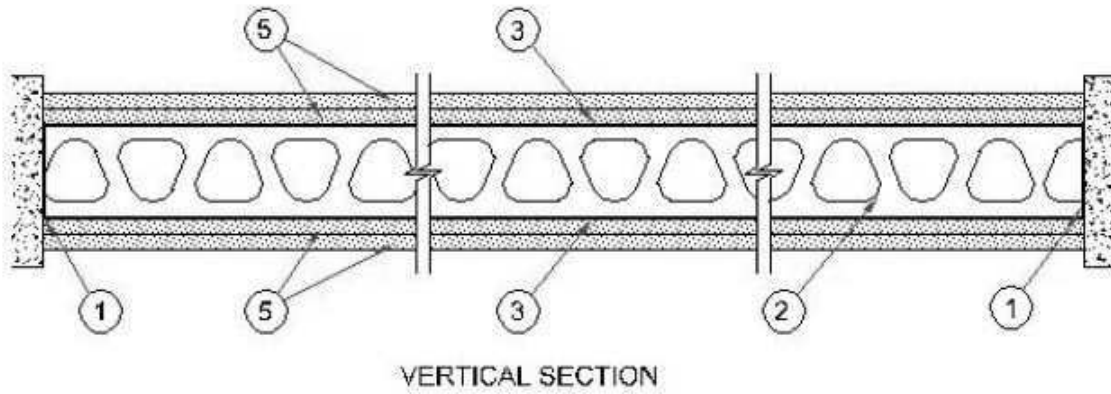
Design No. V457

July 30, 2010

Assembly Ratings - 1 and 2 Hr (See Item 5)

Bearing Wall





1. **Floor and Ceiling Track** — Min 3-5/8 in. wide by 1-1/4 in. deep channel, min No. 18 MSG galvanized steel, attached to masonry or concrete with fasteners spaced 24 in. OC.

2. **Structural Steel Member*** — Min 3-5/8 in. wide, 1-5/8 in. deep, steel studs made from min 20 MSG galvanized steel. Studs spaced 24 in. OC (maximum) and attached to floor and ceiling track with No. 8 by 1/2 in. long low profile screws, one screw per flange, each side.

MARINO/WARE, DIV OF WARE INDUSTRIES

INC — Type JR StudRite studs, Type JT Stud Track

3. **Lateral Bracing** — 1-1/2 in. wide 18 GA thick galvanized steel strapping, spaced 48 in. OC (maximum) attached to each stud through the flange with one No. 8 by 1/2 in. long low profile screw.

4. **Batts and Blankets*** — Placed in stud cavities, nominal thickness 3-1/2 in., any glass fiber insulation bearing the UL Classification Marking as to Surface Burning Characteristics and/or Fire Resistance, having a min density of 1.0 pcf.

See **Batts and Blankets** (BKNV and/or BZJZ) Categories for names of Classified Companies.

5. **Gypsum Board*** — 5/8 in. thick, 48 in. wide applied in one or two layers on each side of stud in accordance with the following:

Rating	No. of Layers, Each Side
1 hour	1
2 hour	2

Single layer or inner layer of double layer construction applied vertically and attached to studs and track with 1 in. long Type "S" drywall screws spaced 12 in. OC along board edges and ends and in the field of the board. Joints located over studs and staggered on opposite sides of the assembly. Outer layer of double layer construction applied horizontally or vertically and attached to studs and track with 1-5/8 in. long Type "S" drywall screws spaced 12 in. OC along board edges and ends and in the field of the board. Vertical joints located over studs, vertical and horizontal joints staggered from inner layer joints and on opposite sides of the assembly.

CGC INC — Types C, IP-X2, IPC-AR, WRC

GEORGIA-PACIFIC GYPSUM L L C — Types 5, Fireguard C, GPFS1

LAFARGE NORTH AMERICA INC — Types LGFC-C, LGFC-C/A

UNITED STATES GYPSUM CO — Types C, IP-X2, IPC-AR, WRC

USG MEXICO S A D E C V — Types C, IP-X2, IPC-AR, WRC

6. **Joint Tape and Compound** — (Not Shown) — Outer layer joints covered with joint compound and paper or mesh tape. Screw heads covered with joint compound.

*Bearing the UL Classification Mark

Last Updated on 2010-07-30

[Questions?](#)

[Print this page](#)

[Notice of Disclaimer](#)

[Page Top](#)

[© 2012 UL LLC](#)

The appearance of a company's name or product in this database does not in itself assure that products so identified have been manufactured under UL's Follow-Up Service. Only those products bearing the UL Mark should be considered to be Listed and covered under UL's Follow-Up Service. Always look for the Mark on the product.

UL permits the reproduction of the material contained in the Online Certification Directory subject to the following conditions: 1. The Guide Information, Designs and/or Listings (files) must be presented in their entirety and in a non-misleading manner, without any manipulation of the data (or drawings). 2. The statement "Reprinted from the Online Certifications Directory with permission from UL" must appear adjacent to the extracted material. In addition, the reprinted material must include a copyright notice in the following format: "© 2012 UL LLC".